

UNITED STATES
DEPARTMENT OF THE INTERIOR
BUREAU OF LAND MANAGEMENT

APPLICATION FOR PERMIT TO DRILL OR DEEPEN

1a. TYPE OF WORK

DRILL ☒

DEEPEN ☐

b. TYPE OF WELL

OIL
WELL ☐

GAS
WELL ☒

OTHER

SINGLE
ZONE ☐

MULTIPLE
ZONE ☒

2. NAME OF OPERATOR

XTO Energy Inc.

3. ADDRESS AND TELEPHONE NO.

2700 Farmington Ave., Bldg. K. Ste 1 Farmington, NM 87401

4. LOCATION OF WELL (Report location clearly and in accordance with any State requirements.)
At surface

1805' FNL & 2400' FWL Sec 17, T27N, R08W
At proposed prod. zone

14. DISTANCE IN MILES AND DIRECTION FROM NEAREST TOWN OR POST OFFICE*

Approx 24 air miles south down Largo Canyon from the Blanco NM Post Office

15. DISTANCE FROM PROPOSED*
LOCATION TO NEAREST
PROPERTY OR LEASE LINE, FT.
(Also to nearest drlg. unit line, if any)

180' (Chacra)

16. NO. OF ACRES IN LEASE

+2880

17. NO. OF ACRES ASSIGNED
TO THIS WELL

320 DK MV / 160 CH

18. DISTANCE FROM PROPOSED LOCATION*
TO NEAREST WELL, DRILLING, COMPLETED,
OR APPLIED FOR, ON THIS LEASE, FT.

1,300'

19. PROPOSED DEPTH

7,725'

20. ROTARY OR CABLE TOOLS

0'-7,725' w/Rotary Tools

21. ELEVATIONS (Show whether DF, RT, GR, etc.)

6,755' Ground level

22. APPROX. DATE WORK WILL START*

Summer 2002

23. PROPOSED CASING AND CEMENTING PROGRAM

SIZE OF HOLE	GRADE, SIZE OF CASING	WEIGHT PER FOOT	SETTING DEPTH	QUANTITY OF CEMENT
12-1/4"	9-5/8", H-40	32.3#	265'	140 sx Class "B"
8-3/4"	7", J-55	20.0#	3,150'	275 sx Liteweight cement
6-1/4"	4-1/2", J-55	10.5#	7,725'	435 sx C1 "H" / Liteweight Cement

This action is subject to technical and
procedural review pursuant to 43 CFR 3165.3
and appeal pursuant to 43 CFR 3165.4

XTO Energy Inc. plans to drill the above mentioned well as described in the enclosed Surface Use
Program.

Please note that the attached APP also contains the El Paso title for ROW.

RECEIVED

JUN 6 2002

BUREAU OF LAND MANAGEMENT
FARMINGTON FIELD OFFICE

IN ABOVE SPACE DESCRIBE PROPOSED PROGRAM: If proposal is to deepen, give data on present productive zone and proposed new productive zone. If proposal is to drill or
deepen directionally, give pertinent data on subsurface locations and measured and true vertical depths. Give blowout preventer program, if any.

24. SIGNED JW Patton TITLE Drilling Engineer DATE 6/4/02

(This space for Federal or State office use)

PERMIT NO. _____

APPROVAL DATE _____

Application approval does not warrant or certify that the applicant holds legal or equitable title to those rights in the subject lease which would entitle the applicant to conduct operations thereon.

CONDITIONS OF APPROVAL, IF ANY:

/s/ Charlie Beecham

ACTING

AUG 29 2002

APPROVED BY _____

TITLE _____

DATE _____

*See Instructions On Reverse Side

Title 18 U.S.C. Section 1001, makes it a crime for any person knowingly and willfully to make to any department or agency of the United States any false,
fictitious or fraudulent statements or representations as to any matter within its jurisdiction.

NMCCD

DISTRICT I
1625 N. French Dr., Hobbs, N.M. 88240

DISTRICT II
811 South First, Artesia, N.M. 88210

DISTRICT III
1000 Rio Brazos Rd., Aztec, N.M. 87410

DISTRICT IV
2040 South Pacheco, Santa Fe, NM 87505

State of New Mexico
Energy, Minerals & Natural Resources Department

OIL CONSERVATION DIVISION
2040 South Pacheco
Santa Fe, NM 87505

Form C-102
Revised August 15, 2000

Submit to Appropriate District Office
State Lease - 4 Copies
Fee Lease - 3 Copies

☐ AMENDED REPORT

WELL LOCATION AND ACREAGE DEDICATION PLAT

¹ API Number 30-045-31127	² Pool Code 71599	³ Pool Name BASIN DAKOTA
⁴ Property Code 22608	⁵ Property Name FLORANCE	⁶ Well Number 63F
⁷ GRID No. 167067	⁸ Operator Name XTO ENERGY INC.	⁹ Elevation 6755'

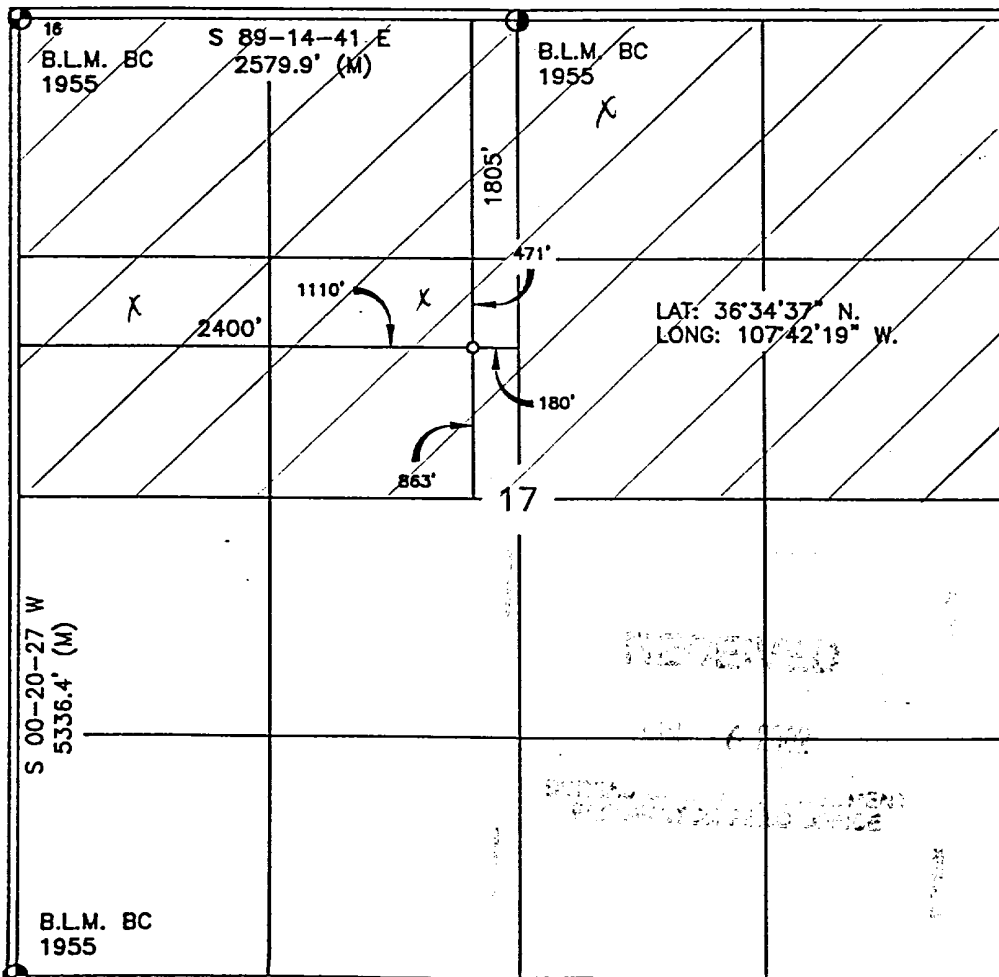
¹⁰ Surface Location

UL or lot no.	Section	Township	Range	Lot Idn	Feet from the	North/South line	Feet from the	East/West line	County
F	17	27-N	8-W		1805'	NORTH	2400'	WEST	SAN JUAN

¹¹ Bottom Hole Location If Different From Surface

UL or lot no.	Section	Township	Range	Lot Idn	Feet from the	North/South line	Feet from the	East/West line	County
¹² Dedicated Acres 320	N/2				¹³ Joint or Infill I	¹⁴ Consolidation Code	¹⁵ Order No.		

NO ALLOWABLE WILL BE ASSIGNED TO THIS COMPLETION UNTIL ALL INTERESTS HAVE BEEN CONSOLIDATED
OR A NON-STANDARD UNIT HAS BEEN APPROVED BY THE DIVISION



17 OPERATOR CERTIFICATION

I hereby certify that the information contained herein is true and complete to the best of my knowledge and belief

Signature Jeffrey N. Patton
Printed Name JEFFREY N. PATTON
Title DRILLING ENGINEER
Date 6-3-02

18 SURVEYOR CERTIFICATION

I hereby certify that the well location shown on this plat was plotted from field notes of actual surveys made by me or under my supervision, and that the same is true and correct to the best of my belief.

Date of Survey SEP 14 2001
Signature and Seal of Professional Surveyor: DAVID A. JOHNSON
Certificate Number 14827

DISTRICT I
1625 N. French Dr., Hobbs, N.M. 88240

DISTRICT II
811 South First, Artesia, N.M. 88210

DISTRICT III
1000 Rio Brazos Rd., Aztec, N.M. 87410

DISTRICT IV
2040 South Pacheco, Santa Fe, NM 87505

State of New Mexico
Energy, Minerals & Natural Resources Department

Form C-102
Revised August 15, 2000

Submit to Appropriate District Office
State Lease - 4 Copies
Fee Lease - 3 Copies

OIL CONSERVATION DIVISION
2040 South Pacheco
Santa Fe, NM 87505

☐ AMENDED REPORT

WELL LOCATION AND ACREAGE DEDICATION PLAT

¹ API Number 30-045-31127		² Pool Code 82329	³ Pool Name OTERO CHACRA
⁴ Property Code 22608	⁵ Property Name FLORANCE		⁶ Well Number 63F
⁷ OCRID No. 167067	⁸ Operator Name XTO ENERGY INC.		⁹ Elevation 6755'

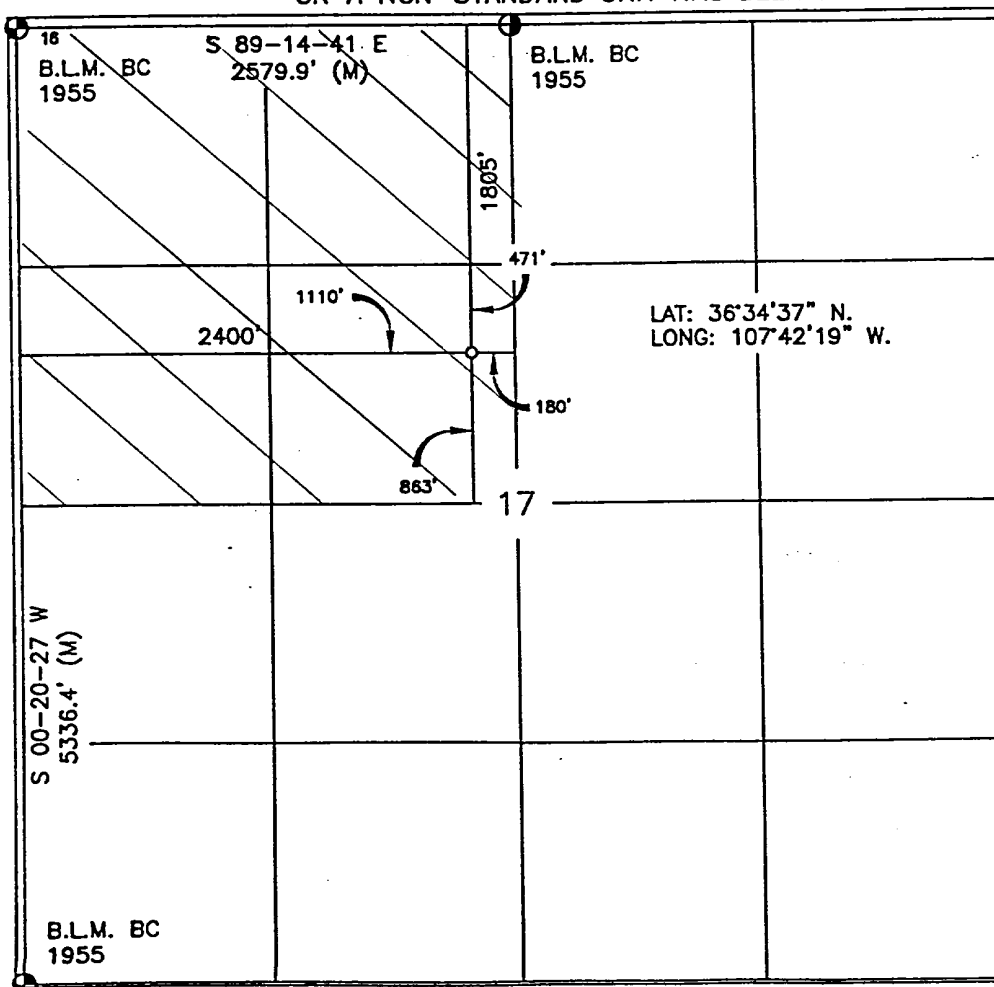
¹⁰ Surface Location

UL or lot no.	Section	Township	Range	Lot Idn	Feet from the	North/South line	Feet from the	East/West line	County
F	17	27-N	8-W		1805'	NORTH	2400'	WEST	SAN JUAN

¹¹ Bottom Hole Location If Different From Surface

UL or lot no.	Section	Township	Range	Lot Idn	Feet from the	North/South line	Feet from the	East/West line	County
¹² Dedicated Acres 160 NW/A		¹³ Joint or Infill		¹⁴ Consolidation Code		¹⁵ Order No.			

NO ALLOWABLE WILL BE ASSIGNED TO THIS COMPLETION UNTIL ALL INTERESTS HAVE BEEN CONSOLIDATED
OR A NON-STANDARD UNIT HAS BEEN APPROVED BY THE DIVISION



17 OPERATOR CERTIFICATION

I hereby certify that the information contained herein
is true and complete to the best of my knowledge and
belief

Signature Jeffrey W. Patton
Printed Name JEFFREY W. PATTON
Title DRILLING ENGINEER
Date 6-03-02

18 SURVEYOR CERTIFICATION

I hereby certify that the well location shown on this plat
was plotted from field notes of actual surveys made by
me or under my supervision, and that the same is true
and correct to the best of my belief.

Date of Survey SEP 14 2001
Signature and Seal of Professional Surveyor:

Certificate Number 14827

DISTRICT I
1625 N. French Dr., Hobbs, N.M. 88240

DISTRICT II
811 South First, Artesia, N.M. 88210

DISTRICT III
1000 Rio Brazos Rd., Aztec, N.M. 87410

DISTRICT IV
2040 South Pacheco, Santa Fe, NM 87505

State of New Mexico
Energy, Minerals & Natural Resources Department

Form C-102
Revised August 15, 2000

Submit to Appropriate District Office
State Lease - 4 Copies
Fee Lease - 3 Copies

OIL CONSERVATION DIVISION
2040 South Pacheco
Santa Fe, NM 87505

☐ AMENDED REPORT

WELL LOCATION AND ACREAGE DEDICATION PLAT

¹ API Number 30-045-3112.7		² Pool Code 72319		³ Pool Name BLANCO MESAHERDE	
⁴ Property Code 22608		⁵ Property Name FLORANCE			⁶ Well Number 63F
⁷ OGRD No. 167067		⁸ Operator Name XTO ENERGY INC.			⁹ Elevation 6755'

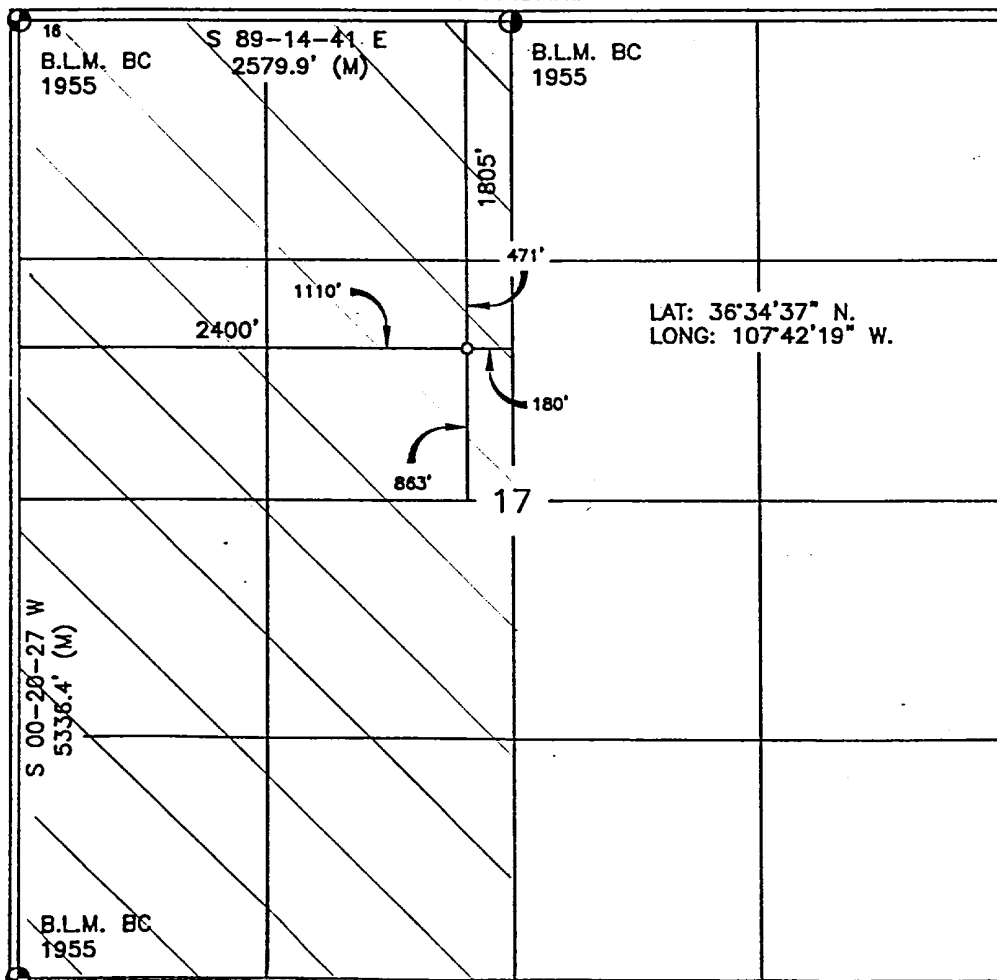
¹⁰ Surface Location

UL or lot no.	Section	Township	Range	Lot Idn	Feet from the	North/South line	Feet from the	East/West line	County
F	17	27-N	8-W		1805'	NORTH	2400'	WEST	SAN JUAN

¹¹ Bottom Hole Location If Different From Surface

UL or lot no.	Section	Township	Range	Lot Idn	Feet from the	North/South line	Feet from the	East/West line	County
¹² Dedicated Acres 320 W/2		¹³ Joint or Infill I		¹⁴ Consolidation Code		¹⁵ Order No.			

NO ALLOWABLE WILL BE ASSIGNED TO THIS COMPLETION UNTIL ALL INTERESTS HAVE BEEN CONSOLIDATED
OR A NON-STANDARD UNIT HAS BEEN APPROVED BY THE DIVISION



17 OPERATOR CERTIFICATION

I hereby certify that the information contained herein
is true and complete to the best of my knowledge and
belief

Signature Jeffrey W. Patton
Printed Name JEFFREY W. PATTON
Title DILLING ENGINEER
Date 6-3-02

18 SURVEYOR CERTIFICATION

I hereby certify that the well location shown on this plat
was plotted from field notes of actual surveys made by
me or under my supervision, and that the same is true
and correct to the best of my belief.

Date of Survey SEP 10 2001
Signature and Seal of Professional Surveyor:
[Signature]
Certificate Number 14827

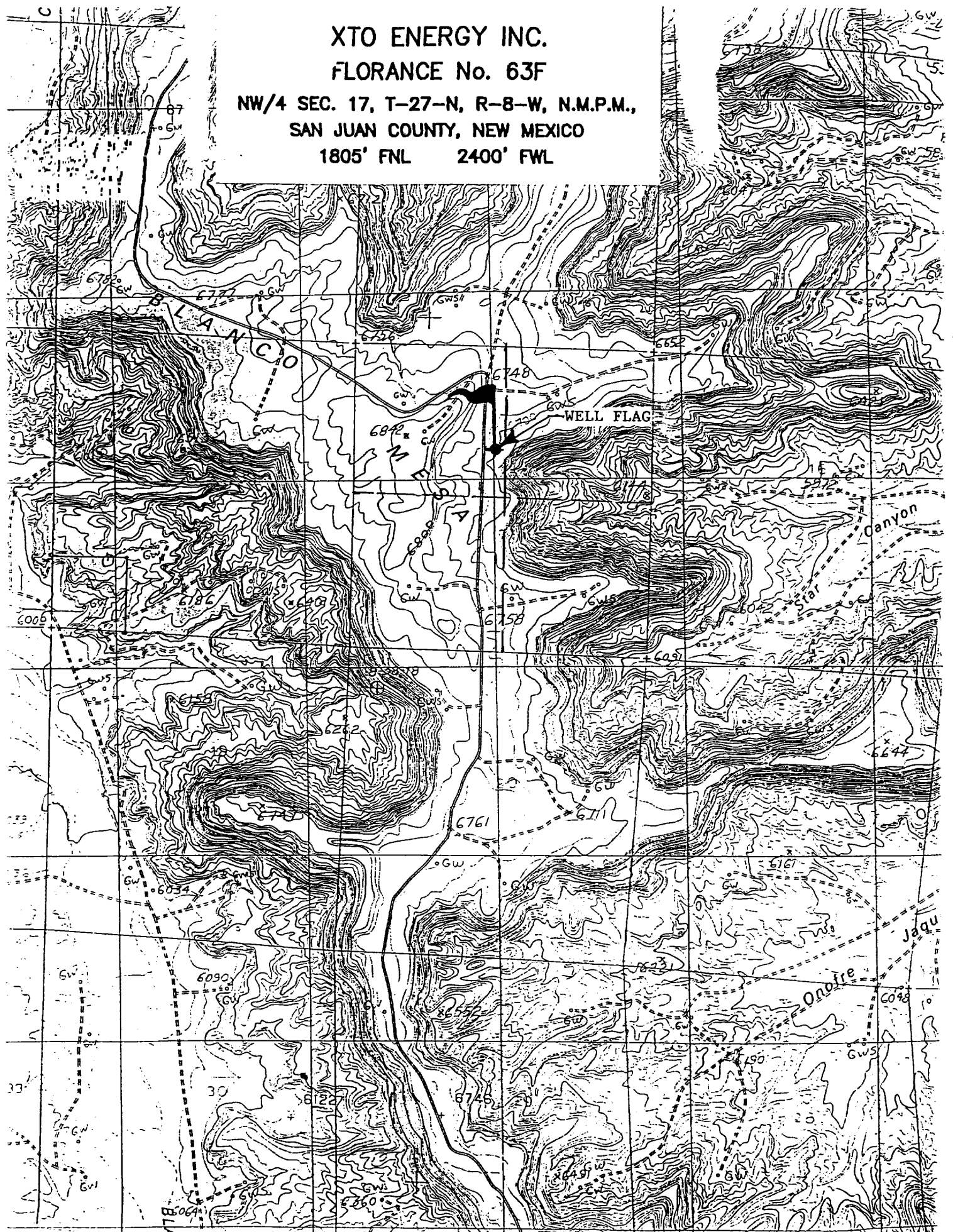
XTO ENERGY INC.

FLORANCE No. 63F

NW/4 SEC. 17, T-27-N, R-8-W, N.M.P.M.,

SAN JUAN COUNTY, NEW MEXICO

1805' FNL 2400' FWL



XTO ENERGY INC.

Florance #63F

APD Data

June 3, 2002

Surface Location: 1,805' FNL & 2,400' FWL, Sec 17, T27N, R08W County: San Juan State: New Mexico

TOTAL DEPTH: ±7,725'

GR ELEV: 6,755'

OBJECTIVE: Dakota/Mesaverde/Chacra

Est KB ELEV: 6,768' (13' AGL)

1. MUD PROGRAM:

INTERVAL	0' to 265'	265' to 3,150'	3,150' to TD
HOLE SIZE	12-1/4"	8-3/4"	6-1/4"
MUD TYPE	FW/Native Mud	FW/Polymer	Air/Foam
WEIGHT	8.6-8.8	8.6-9.0	
VISCOSITY	28-32	29-34	
WATER LOSS	NC	NC	

Remarks: Use fibrous materials as needed to control seepage and lost circulation. Pump high viscosity sweeps as needed for hole cleaning. RU air compressors after setting the intermediate csg. Drill with air or foam to TD.

2. CASING PROGRAM:

Surface Casing: 9-5/8" casing to be set at ± 265' in 8.6 ppg mud

Interval	Length	Wt	Gr	Cplg	Coll Rating (psi)	Burst Rating (psi)	Jt Str (M-lbs)	ID (in)	Drift (in)	SF Coll	SF Burst	SF Ten
0'-265'	265'	32.3#	H-40	STC	1370	2270	254	9.001	8.972	5.98	5.68	15.73

Intermediate Casing: 7" casing to be set at ±3,150' in 9.0 ppg mud.

Interval	Length	Wt	Gr	Cplg	Coll Rating (psi)	Burst Rating (psi)	Jt Str (M-lbs)	ID (in)	Drift (in)	SF Coll	SF Burst	SF Ten
0'-3,150'	3,150'	20.0#	J-55	STC	2257	3740	234	6.456	6.331	1.15	1.31	2.57

Production Casing: 4-1/2" casing to be set at 7,725' in air.

Interval	Length	Wt	Gr	Cplg	Coll Rating (psi)	Burst Rating (psi)	Jt Str (M-lbs)	ID (in)	Drift (in)	SF Coll	SF Burst	SF Ten
0'-7,725'	7,725'	10.5#	J-55	STC	4010	4790	132	4.052	3.927	1.33	1.20	1.90

3. **WELLHEAD:**

- A. Bradenhead: 9-5/8" x 7" 2,000 psig WP (4,000 psig test).
Casinghead: 7" x 4-1/2" 3,000 psig WP (6,000 psig test).

4. **CEMENT PROGRAM (Slurry design may change slightly, but the plan is to circulate cement to surface on both casing strings):**

- A. Surface: 9-5/8", 32.3#, H-40, STC casing to be set at $\pm 265'$.

Lead: 140 sx of Class "B" (Standard) cement containing 2% CaCl_2 , 1/4 pps celloflake, mixed at 15.6 ppg, 1.18 ft^3/sk , & 5.20 gal wtr/sk.

Total slurry volume is 166 ft^3 , 100% excess of calculated annular volume to 265'.

- B. Intermediate: 7", 20.0#, J-55, STC casing to be set at $\pm 3,150'$.

Lead: 225 sx of Class "B" (Standard) cement containing $\pm 3\%$ extender, 1/4 pps celloflake and 2% CaCl_2 mixed at 11.4 ppg, 2.88 ft^3/sk , 17.89 gal wtr/sx.

Tail: 50 sx of Class "B" (Standard) cement containing 1/4 pps celloflake and 2% CaCl_2 mixed at 15.6 ppg, 1.18 ft^3/sk , 5.20 gal wtr/sx.

Total slurry volume is 707 ft^3 , circulated to surface. This value is 50% (excess) over gage hole volume.

- C. Production: 4-1/2", 10.5#, J-55, STC casing to be set at $\pm 7,725'$. DV Tool @ $\pm 4,250'$.

First Stage:

Lead: 135 sx of Class "H" Premium Lite High Strength (65/35/6), 1/4 pps celloflake, 2% KCl, 0.5% fluidloss, 0.2% dispersant & 2% Phenoseal mixed at 12.5 ppg, 2.01 ft^3/sk , 10.12 gal wtr/sx.

Tail: 150 sx of Class "H" Premium cement containing 4% gel (extender), 1/4 pps celloflake, 0.5% fluidloss, 0.2% dispersant and 2% Phenoseal mixed at 14.7 ppg, 1.38 ft^3/sk , 6.70 gal wtr/sx..

Second Stage:

Lead: 50 sx of Class "B" cement containing 3% extender & 1/4 pps celloflake mixed at 11.4 ppg, 2.82 ft^3/sk , 17.5 gal wtr/sx.

Tail: 100 sx of Class "B" cement containing 1/4 pps celloflake and 2% Phenoseal mixed at 15.6 ppg, 1.18 ft^3/sk , 5.20 gal wtr/sx..

Total estimated slurry volume for the 4-1/2" production casing is 736 ft^3 for $\pm 5,075'$ of fill. Est. TOC should be @ $\pm 2,650'$. 35% (excess) over gage hole volume has been added to the number of sacks indicated..

Note: The slurry design may change slightly based upon actual conditions. Final cement volumes will be determined for the caliper logs plus 35%..

5. LOGGING PROGRAM:

A. Mud Logger: A two man mud logging crew will come on the hole @ 4,300' and remain on the hole until TD.

B. Open Hole Logs as follows: Run Dual Induction/MSFL/GR/CAL/SP/CNL/LDT (lithodensity) from TD to the bottom of the intermediate csg (@ ±3,150' MD). Run cased hole GR/CCL from TD to surface.

6. FORMATION TOPS:

Formation	Subsea Depth	Well Depth (MD)
Ojo Alamo SS	+4746'	2024'
Kirtland Shale	+4689'	2081'
Farmington Sanstone	+4590'	2180'
Fruitland Formation	+4150'	2620'
Lower Fruitland Coal	+3964'	2806'
Pictured Cliffs SS	+3881'	2889'
Lewis Shale	+3722'	3048'
Chacra Sandstone	+2980'	3790'
Cliffhouse SS	+2307'	4463'
Menefee	+2138'	4632'
Point Lookout SS	+1618'	5152'
Mancos Shale	+1292'	5478'
Gallup Sandstone	+444'	6326'
Greenhorn Limestone	-347'	7117'
Graneros Shale	-398'	7168'
1 st Dakota	-434'	7204'
2 nd Dakota	-454'	7224'
3 rd Dakota	-504'	7274'
4 th Dakota	-567'	7337'
5 th Dakota	-591'	7361'
6 th Dakota	-638'	7408'
Burro Canyon Ss	-681'	7451'
Morrison	-733'	7503'
Projected TD	-955'	7725'

BOP SCHEMATIC FOR DRILLING OPERATIONS CLASS 1 (2M) NORMAL PRESSURE

TESTING PROCEDURE

1. Test BOP after installation:
Pressure test BOP to 200-300 psig (low pressure) for 5 min.
Test BOP to Working Press or to 70% internal yield of surf csg (10 min).
2. Test operation of (both) rams on every trip.
3. Check and record Accumulator pressure on every tour.
4. Re-pressure test BOP stack after changing out rams.
5. Have kelly cock valve with handle available.
6. Have safety valve and subs to fit all sizes of drill string.

