

UNITED STATES
DEPARTMENT OF THE INTERIOR
BUREAU OF LAND MANAGEMENT

SUNDRY NOTICES AND REPORTS ON WELLS

Do not use this form for proposals to drill or to deepen or reentry to a different reservoir.
Use "APPLICATION FOR PERMIT—" for such proposals

SUBMIT IN TRIPLICATE

1. Type of Well

☐ Oil Well ☒ Gas Well ☐ Other

2. Name of Operator
CONOCO INC
CONOCO INC.

3. Address and Telephone No.

10 DESTA DR. STE. 100W, MIDLAND, TX. 79705-4500 (915) 686-5424

4. Location of Well (Footage, Sec., T. R. M. or Survey Description)

Section 31, T-28-N, R-9-W, D
1178' FNL & 975' FWL

FORM APPROVED

Budget Bureau No. 1004-0135

Expires: March 31, 1993

5. Lease Designation and Serial No.

SF 077107

6. If Indian, Allottee or Tribe Name

7. If Unit or CA, Agreement Designation

Well Name and No.

Michener A LS #9

API Well No.

30-045-11749

10. Field and Pool, or Exploratory Area

Antic Pictured Cliffs (71280)

11. County or Parish, State

San Juan, NM

RECEIVED
JUN 25 1999
OIL CON. DIV.
DIST. 3

12. CHECK APPROPRIATE BOX(s) TO INDICATE NATURE OF NOTICE, REPORT, OR OTHER DATA

TYPE OF SUBMISSION

- ☒ Notice of Intent
☐ Subsequent Repon
☐ Final Abandonment Notice

TYPE OF ACTION

- ☒ Abandonment
☐ Recompletion
☐ Plugging Back
☐ Casing Repair
☐ Altering Casing
☐ Other

- ☐ Change of Plans
☐ New Construction
☐ Non-Routine Fracuring
☐ Water Shut-Off
☐ Conversion to Injection
☐ Dispose Water

(Note: Repon results of multiple completion Well Completion or Recompletion Report and Log form.)

13. Describe Proposed or Completed Operations (Clearly state all pertinent details, and give pertinent dates, including estimated date of starting any proposed work. If well is directionally drilled, give subsurface locations and measured and true vertical depths for all markers and zones pertinent to this work.)*

Conoco, Inc proposes to plug & abandon this well using the attached procedure.

14. I hereby certify that the foregoing is true and correct

Signed

Kay Maddox

Title -Regulatory Agent

Date June 16, 1999

(This space for Federal or State office use)

Approved by /S/ Duane W. Spencer

Title

Team Lead, Petroleum Affairs

Date JUN 23 1999

BLM(6), NMOCD(1), SHEAR, PONCA, COST ASST, FILE ROOM

Title 18 U.S.C. Section 1001, makes it a crime for any person knowingly and willfully to make to any department or agency of the United States any false, fictitious or fraudulent statements or representations as to any matter within its jurisdiction.

*See Instruction on Reverse Side

NMOCD

PLUG AND ABANDONMENT PROCEDURE

6/15/99

Michener A LS #9

Aztec Pictured Cliffs
1178 FNL, 975 FWL, NW, Section 31, T28N, R9W
San Juan County, New Mexico

Note: All cement volumes use 100% excess outside pipe and 50' excess inside. The stabilizing wellbore fluid will be 8.3 ppg, sufficient to balance all exposed formation pressures.

1. 1. Prepare blow pit. Comply with all NMOCD, BLM, and Conoco safety regulations. Conduct safety meeting for all personnel on location. MOL and RU daylight pulling unit. NU relief line and blow down well; kill with water as necessary. ND wellhead and install cementing valve.
2. Open bradenhead valve. Establish rate down 2-7/8" casing with 20 bbls water, record pump rate and pressure. Monitor bradenhead for flow. If no flow or blow, then pump 15 7/8" RCN balls in additional water and monitor pressure, rate and volumes pumped, to confirm perforations are taking water and there is not a casing leak. If the bradenhead flows water or there are other indications of a casing leak, then use 1-1/4" IJ tubing workstring to set plug#1 in well.
3. **Plug #1 (Pictured Cliffs perforations, Fruitland and Kirtland tops, 2446' – 1460')**: Establish rate into perforations with water. Mix and pump 35 sxs Class B cement (30% excess) and bullhead cement down 2-7/8" casing, displace to 1600'. Shut in well and WOC. Install BOP and test. TIH with 1-1/4" tubing workstring and tag cement. Pressure test casing to 500#. If cement is less than 1460' then spot more as needed. TOH with tubing.
4. **Plug #2 (Ojo Alamo top, 1420' - 1320')**: Perforate 2 squeeze holes at 1420'. Establish rate into squeeze holes if casing tested. Mix 40 sxs Class B cement and pump down 2-7/8" casing, squeeze 35 sxs cement outside 2-7/8" casing and leave 5 sxs cement inside casing to cover Ojo Alamo top, displace to 1200'. WOC and then tag cement. If casing leaks, use tubing and a wireline set retainer at 1410'.
5. **Plug #3 (8-5/8" Casing Shoe at 139')**: Perforate 2 squeeze holes at 186'. Establish circulation out bradenhead valve. Mix and pump approximately 65 sxs Class B cement down 2-7/8" casing, circulate good cement to surface. Shut in well and WOC.
6. ND BOP and cut off wellhead below surface casing. Install P&A marker to comply with regulations. RD, MOL, cut off anchors, and restore location.

Michener A LS #9

Proposed P&A

Aztec Pictured Cliffs

Today's Date: 6/15/99

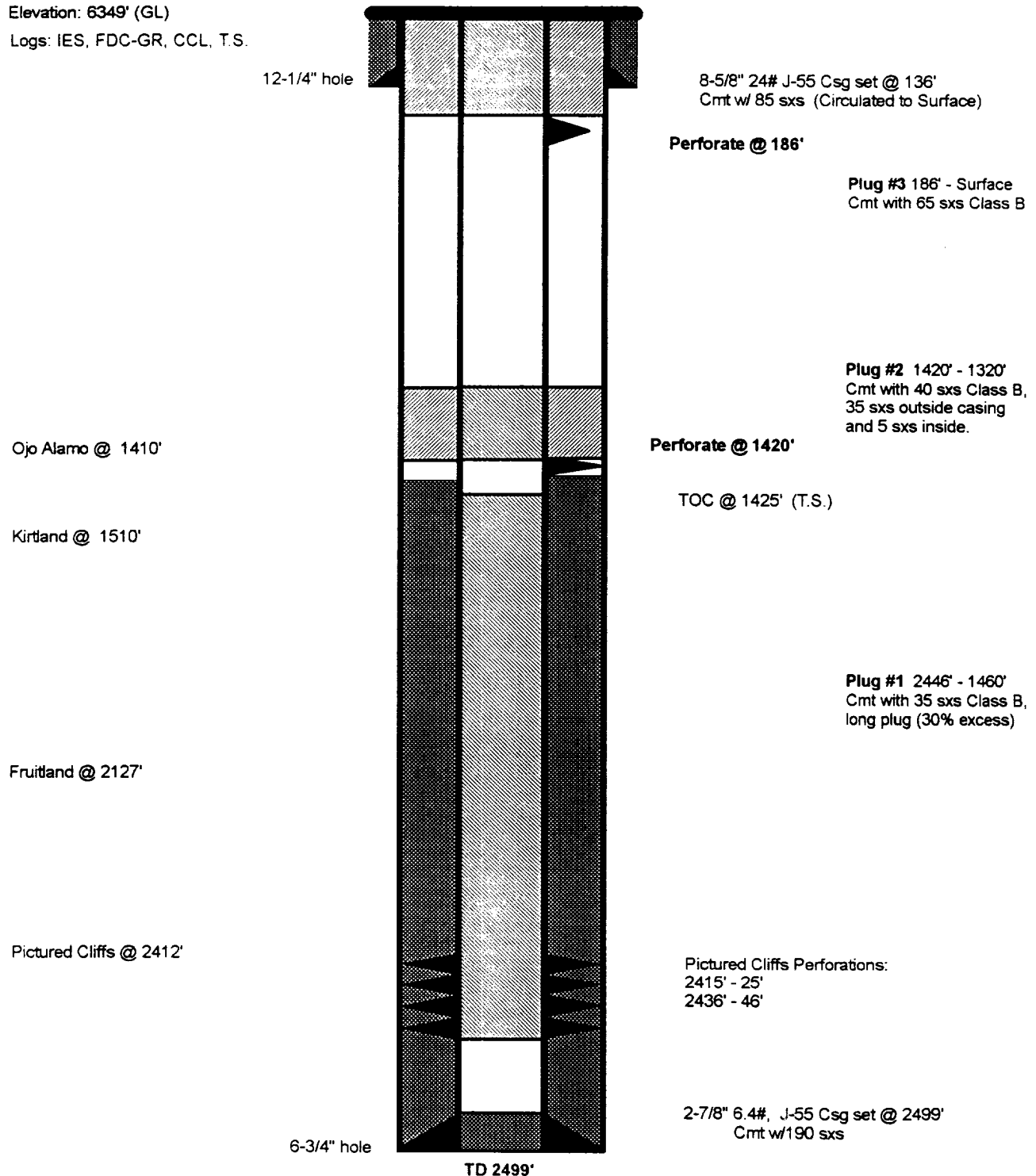
Spud: 6/22/66

Completed: 7/18/66

Elevation: 6349' (GL)

Logs: IES, FDC-GR, CCL, T.S.

NW, Section 31, T-28-N, R-9-W, San Juan County, NM



Michener A LS #9

Current

Aztec Pictured Cliffs

Today's Date: 6/15/99

Spud: 6/22/66

Completed: 7/18/66

Elevation: 6349' (GL)

Logs: IES, FDC-GR, CCL, T.S.

NW, Section 31, T-28-N, R-9-W, San Juan County, NM

