

UNITED STATES  
DEPARTMENT OF THE INTERIOR  
GEOLOGICAL SURVEY

## APPLICATION FOR PERMIT TO DRILL, DEEPEN, OR PLUG BACK

## 1a. TYPE OF WORK

DRILL ☒DEEPEN ☐PLUG BACK ☐

## b. TYPE OF WELL

OIL  
WELL ☐GAS  
WELL ☒

OTHER

SINGLE  
ZONE ☒MULTIPLE  
ZONE ☐

## 2. NAME OF OPERATOR

Tenneco Oil Company

## 3. ADDRESS OF OPERATOR

Box 1714, Durango, Colorado

4. LOCATION OF WELL (Report location clearly and in accordance with any State requirements.)\*  
At surfaceUnit letter "G" 1850' FNL 1760' FEL  
At proposed prod. zone

## 14. DISTANCE IN MILES AND DIRECTION FROM NEAREST TOWN OR POST OFFICE\*

10 miles

## 15. DISTANCE FROM PROPOSED\*

LOCATION TO NEAREST  
PROPERTY OR LEASE LINE, FT.  
(Also to nearest drlg. unit line, if any)

## 16. NO. OF ACRES IN LEASE

320

17. NO. OF ACRES ASSIGNED  
TO THIS WELL

320

18. DISTANCE FROM PROPOSED LOCATION\*  
TO NEAREST WELL, DRILLING, COMPLETED,  
OR APPLIED FOR, ON THIS LEASE, FT.

## 19. PROPOSED DEPTH

6605

## 20. ROTARY OR CABLE TOOLS

Rotary

## 21. ELEVATIONS (Show whether DF, RT, GR, etc.)

5873 GR

## 22. APPROX. DATE WORK WILL START\*

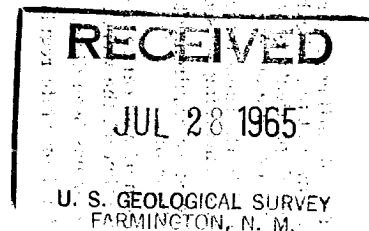
August 6, 1965

## 23.

## PROPOSED CASING AND CEMENTING PROGRAM

SIZE OF HOLE	SIZE OF CASING	WEIGHT PER FOOT	SETTING DEPTH	QUANTITY OF CEMENT
12-1/4	8-5/8	24#	250	Circulate to surface
7-7/8	4-1/2	10.5#	6605	2 stages - 1st stage
				100 sacks, 2nd stage
				sufficient to circulate
				to surface through stage
				collar.

We propose to rig up rotary rig and drill to 250'. Set 8-5/8" surface casing. WOC. Drill out from under surface to approximately 6605. Set 4-1/2 10.5# casing through stage collar, cement w/2 stages. Log perforate and complete as a single Dakota producer through 2-3/8" tubing.



IN ABOVE SPACE DESCRIBE PROPOSED PROGRAM: If proposal is to deepen or plug back, give data on present productive zone and proposed new productive zone. If proposal is to drill or deepen directionally, give pertinent data on subsurface locations and measured and true vertical depths. Give blowout preventer program, if any.

## 24.

Original Signed By:

SIGNED J. H. WATKINS  
J. H. WATKINS

TITLE District Office Supv.

DATE 7-22-65

(This space for Federal or State office use)

PERMIT NO.

APPROVAL DATE

APPROVED BY

CONDITIONS OF APPROVAL, IF ANY:

TITLE

DATE

## NEW MEXICO OIL CONSERVATION COMMISSION

## Well Location and Acreage Dedication Plat

Section A.

Date 7-22-65

Operator TENNECO OIL COMPANY Lease Omler "A"  
 Well No. Omler A5 Unit Letter G Section 25 Township 28 North Range 10 West NMPM  
 Located 1850 Feet From North Line, 1760 Feet From East Line  
 County San Juan G. L. Elevation 5873' ungraded Dedicated Acreage 320 Acres  
 Name of Producing Formation Dakota Pool Dakota

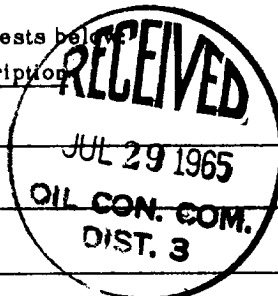
1. Is the Operator the only owner in the dedicated acreage outlined on the plat below?

Yes 1 No       2. If the answer to question one is "no", have the interests of all the owners been consolidated by communitization agreement or otherwise? Yes        No       . If answer is "yes", Type of Consolidation.

3. If the answer to question two is "no", list all the owners and their respective interests below:

Owner

Land Description



Section B.

Note: All distances must be from outer boundaries of section.

This is to certify that the information in Section A above is true and complete to the best of my knowledge and belief.

Tenneco Oil Co.

Original Signed (Operator)

HAROLD C. NICHOLS

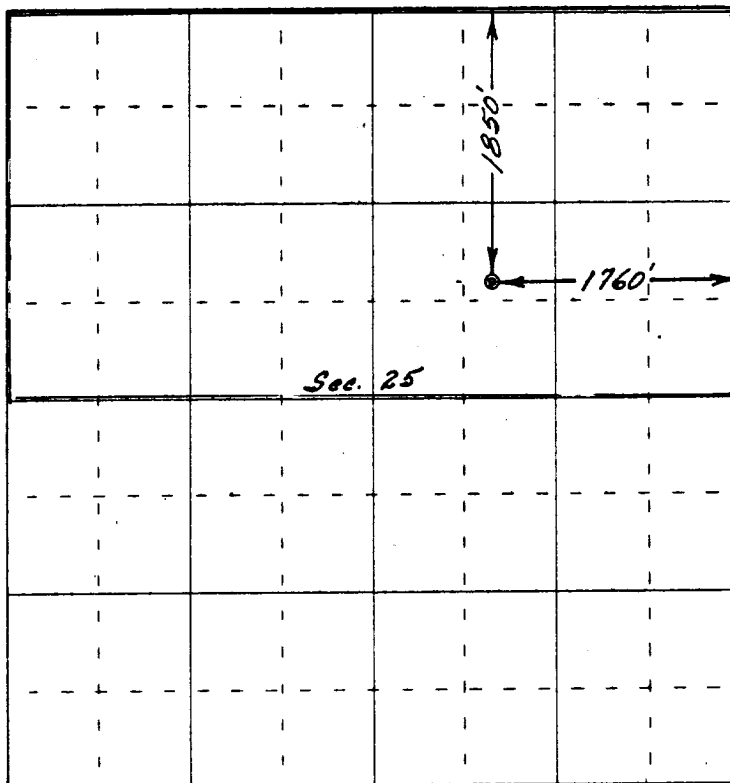
(Representative)

Box 1714

(Address)

Durango,

Colorado



0 330 660 990 1320 1650 1980 2310 2640 2000 1500 1000 500 0

Scale 4 inches equal 1 mile

This is to certify that the above plat was prepared from field notes of actual surveys made by me or under my supervision and that the same are true and correct to the best of my knowledge and belief.

Date Surveyed 23 April 1965

Registered Professional Engineer and/or Land Surveyor

Robert H. Ernst M. Mex. PE &amp; LS 21,62

(Seal)

ERNST ENGINEERING CO  
Durango, Colorado