

UNITED STATES  
DEPARTMENT OF THE INTERIOR  
GEOLOGICAL SURVEY

## APPLICATION FOR PERMIT TO DRILL, DEEPEN, OR PLUG BACK

## 1a. TYPE OF WORK

DRILL ☒DEEPEN ☐PLUG BACK ☐

## b. TYPE OF WELL

OIL  
WELL ☐GAS  
WELL ☒

OTHER

SINGLE  
ZONE ☒MULTIPLE  
ZONE ☐

## 2. NAME OF OPERATOR

Aztec Oil and Gas

## 3. ADDRESS OF OPERATOR

Drawer 570, Farmington, New Mexico

## 4. LOCATION OF WELL (Report location clearly and in accordance with any State requirements.)\*

At surface

1800 FNL &amp; 1540 FWL, Sec. 15-28N-10W

At proposed prod. zone

## 14. DISTANCE IN MILES AND DIRECTION FROM NEAREST TOWN OR POST OFFICE\*

## 13. DISTANCE FROM PROPOSED\*

LOCATION TO NEAREST  
PROPERTY OR LEASE LINE, FT.  
(Also to nearest drlg. unit line, if any)

## 18. DISTANCE FROM PROPOSED LOCATION\*

TO NEAREST WELL, DRILLING, COMPLETED,  
OR APPLIED FOR, ON THIS LEASE, FT.

## 21. ELEVATIONS (Show whether DF, RT, GR, etc.)

5887 Gr

## 16. NO. OF ACRES IN LEASE

## 19. PROPOSED DEPTH

2150

17. NO. OF ACRES ASSIGNED  
TO THIS WELL

160

## 20. ROTARY OR CABLE TOOLS

rotary

## 22. APPROX. DATE WORK WILL START\*

## 23.

## PROPOSED CASING AND CEMENTING PROGRAM

SIZE OF HOLE	SIZE OF CASING	WEIGHT PER FOOT	SETTING DEPTH	QUANTITY OF CEMENT
12-1/4"	8-5/8"	24#	150'	100 ss
6-3/4"	4-1/2"	9.5#	2150'	125 ss

Propose to:

Drill 12 1/4" hole to 150' run 8-5/8" surface casing cement w/100 ss  
Drill to TD a 6-3/4" hole, run 4 1/2" casing cement w/125 ss  
Run Induction Electric log  
Perforate and frac Pictured Cliffs  
Run 1" tubing

Proration unit: NW/4 Sec. 15-28N-10W - 160 ac.

IN ABOVE SPACE DESCRIBE PROPOSED PROGRAM: If proposal is to deepen or plug back, give data on present productive zone and proposed new productive zone. If proposal is to drill or deepen directionally, give pertinent data on subsurface locations and measured and true vertical depths. Give blowout preventer program, if any.

## 24.

SIGNED

*John C. Salinas (d)*

TITLE District Superintendent

DATE 6-26-69

(This space for Federal or State office use)

PERMIT NO.

APPROVAL DATE

APPROVED BY

CONDITIONS OF APPROVAL, IF ANY:

TITLE

\*See Instructions On Reverse Side

RECEIVED

JUN 27 1969

U. S. GEOLOGICAL SURVEY  
FARMINGTON, N. M.

## 5. LEASE DESIGNATION AND SERIAL NO.

SF-080781

## 6. IF INDIAN, ALLOTTEE OR TRIBE NAME

## 7. UNIT AGREEMENT NAME

## 8. FARM OR LEASE NAME

Cain

## 9. WELL NO.

18

## 10. FIELD AND POOL, OR WILDCAT

Pictured Cliffs

11. SEC., T., R., M., OR BLK.  
AND SURVEY OR AREA

Sec. 15-28N-10W

## 12. COUNTY OR PARISH

San Juan

New Mexico

NEW MEXICO OIL CONSERVATION COMMISSION  
WELL LOCATION AND ACREAGE DEDICATION PLAT

Form O-101  
Supersedes C-128  
Effective 1-1-65

All distances must be from the outer boundaries of the Section

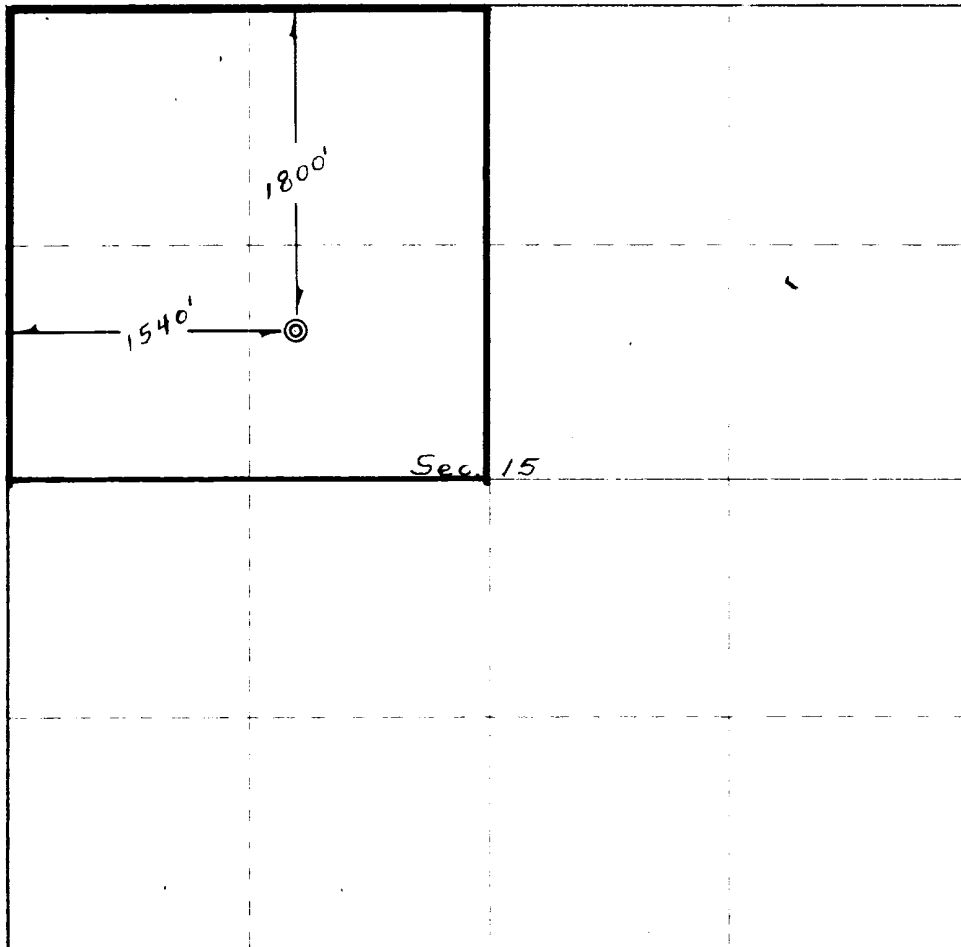
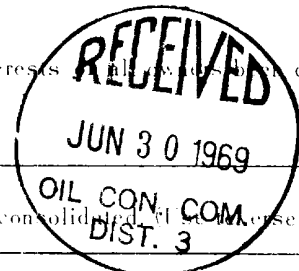
Aztec Oil & Gas Company		Lease		Well No.	
F	15	28N	10W	San Juan	
1800	North	1540	West	Range	
5887	Pictured Cliffs	Estimated Acreage			

- Outline the acreage dedicated to the subject well by colored pencil or hatchure marks on the plat below.
- If more than one lease is dedicated to the well, outline each and identify the ownership thereof (both as to working interest and royalty).
- If more than one lease of different ownership is dedicated to the well, have the interests (all) actually been consolidated by communitization, unitization, force-pooling, etc?

Yes ☐ No ☐ If answer is "yes," type of consolidation \_\_\_\_\_

If answer is "no," list the owners and tract descriptions which have actually been consolidated (on reverse side of this form if necessary.) \_\_\_\_\_

No allowable will be assigned to the well until all interests have been consolidated (by communitization, unitization, force-pooling, or otherwise) or until a non-standard unit, eliminating such interests, has been approved by the Commission.



CERTIFICATION

I hereby certify that the information contained herein is true and complete to the best of my knowledge and belief.

Name \_\_\_\_\_

Position \_\_\_\_\_

Company \_\_\_\_\_

Date \_\_\_\_\_

I hereby certify that the well location shown on this plat was plotted from field notes of actual surveys made by me or under my supervision, and that the same is true and correct to the best of my knowledge and belief.

Date \_\_\_\_\_

June 20, 1969

Registered Professional Surveyor

*Fred B. Kerr Jr.*  
Fred B. Kerr Jr.

3950