

UNITED STATES
DEPARTMENT OF THE INTERIOR
GEOLOGICAL SURVEY30-095-24106
5. LEASE DESIGNATION AND SERIAL NO.

SF-079634

6. IF INDIAN, ALLOTTEE OR TRIBE NAME

7. UNIT AGREEMENT NAME

8. FARM OR LEASE NAME

McClanahan

9. WELL NO.

#20E

10. FIELD AND POOL OR WILDCAT

Basin Dakota

Blanco Mesa Verde ex F

11. SEC., T., R., M., OR BLK.
AND SURVEY OR AREA

Section 13, T28N, R10W

12. COUNTY OR PARISH 13. STATE

San Juan

New Mexico

APPLICATION FOR PERMIT TO DRILL, DEEPEN, OR PLUG BACK

1a. TYPE OF WORK

DRILL ☒DEEPEN ☐PLUG BACK ☐

b. TYPE OF WELL

OIL
WELL ☐GAS
WELL ☒

OTHER

SINGLE
ZONE ☐MULTIPLE
ZONE ☒

2. NAME OF OPERATOR

Southland Royalty Company

3. ADDRESS OF OPERATOR

P. O. Drawer 570, Farmington, NM 87401

4. LOCATION OF WELL (Report location clearly and in accordance with any State requirements.)*
At surface

F 1840' ENL & 1660' FWL

At proposed prod. zone

14. DISTANCE IN MILES AND DIRECTION FROM NEAREST TOWN OR POST OFFICE*

Approximately 6 1/2 miles SE of Bloomfield, NM

15. DISTANCE FROM PROPOSED*

LOCATION TO NEAREST
PROPERTY OR LEASE LINE, FT.
(Also to nearest drilg. unit line, if any)

1660'

16. NO. OF ACRES IN LEASE

2040

17. NO. OF ACRES ASSIGNED
TO THIS WELL

w/ 320

18. DISTANCE FROM PROPOSED LOCATION*

TO NEAREST WELL, DRILLING, COMPLETED,
OR APPLIED FOR, ON THIS LEASE, FT.

650'

19. PROPOSED DEPTH

6610'

20. ROTARY OR CABLE TOOLS

Rotary

21. ELEVATIONS (Show whether DF, RT, GR, etc.)

5777' GR

22. APPROX. DATE WORK WILL START*

March 15, 1980

23. PROPOSED CASING AND CEMENTING PROGRAM

SIZE OF HOLE	SIZE OF CASING	WEIGHT PER FOOT	SETTING DEPTH	QUANTITY OF CEMENT
12 1/4"	8 5/8"	24#	200'	140 Sacks
7 7/8"	5 1/2"	15.5#	6610'	220 Sacks (Stage One)
				240 Sacks (Stage Two)
				160 Sacks

Surface formation is Nacimiento.

Top of Ojo Alamo sand is at 1240'.

Top of Mesa Verde sand is at 3570'.

Fresh water mud will be used to drill from surface to Total Depth.

It is anticipated that a GR-Density and IES log will be run at Total Depth.

No abnormal pressures or poisonous gases are anticipated in this well.

It is expected that this well will be drilled before August 31, 1980. This depends
on time required for approval, rig availability and the weather.

Gas is dedicated.

18. ABOVE SPACE DESCRIBE PROPOSED PROGRAM: If proposal is to deepen or plug back, give data on present productive zone and proposed new productive zone. If proposal is to drill or deepen directionally, give pertinent data on subsurface locations and measured and true vertical depths. Give blowout preventer program, if any.

24.

SIGNED

C. C. Brown

TITLE District Engineer

DATE 12-4-79

(This space for Federal or State office use)

PERMIT NO.

APPROVAL DATE

APPROVED BY

TITLE

DATE

CONDITIONS OF APPROVAL, IF ANY:

ok 3rd

NMOCC

OIL CONSERVATION DIVISION

STATE OF NEW MEXICO
ENERGY AND MINERALS DEPARTMENTP. O. BOX 2088
SANTA FE, NEW MEXICO 87501Form C-107
Revised 10-1-78

All distances must be from the outer boundaries of the Section

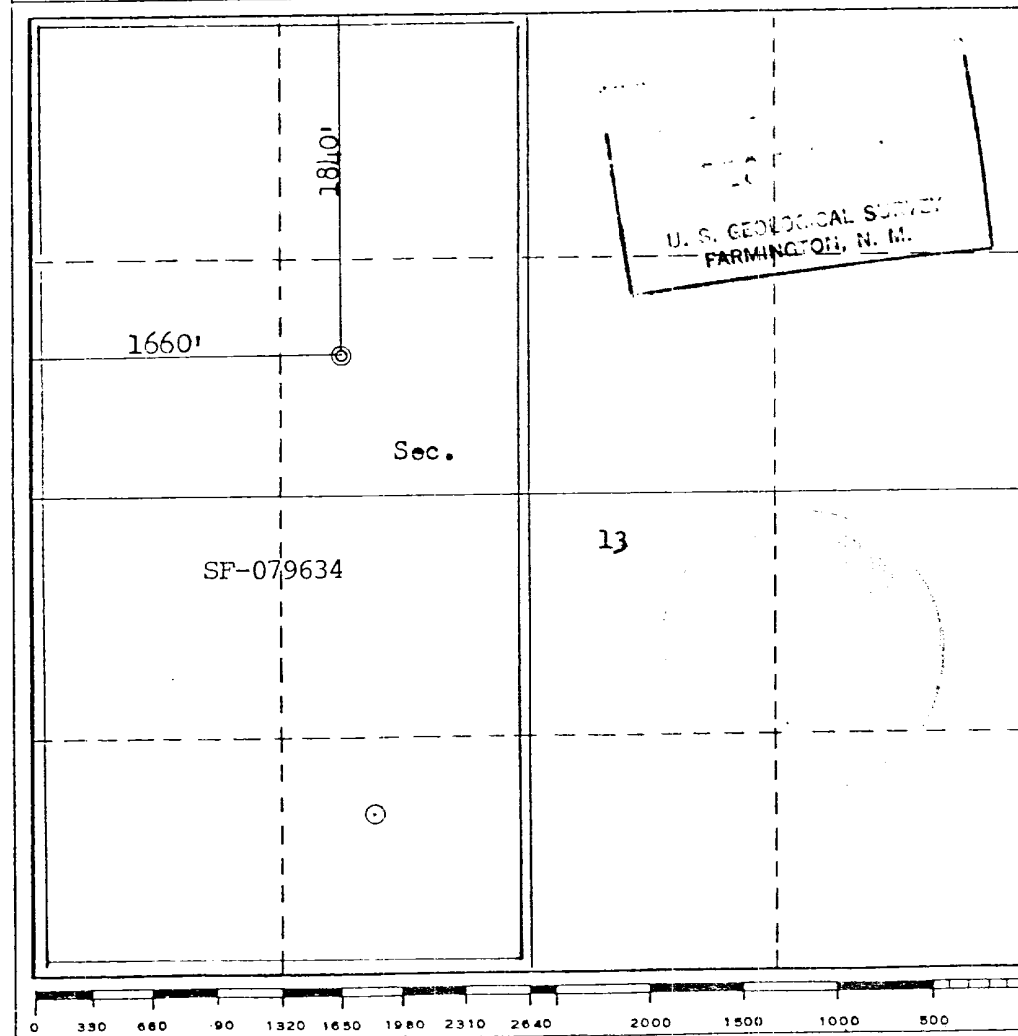
Operator SOUTHLAND ROYALTY COMPANY			Lease McCLANAHAN		Well No. 20-E
Unit Letter F	Section 13	Township 28N	Range 10W	County San Juan	
Actual Footage Location of Well: 1840 feet from the North line and 1660 feet from the West line					
Ground Level Elev. 5777	Producing Formation Dakota/Mesa Verde		Pool Basin/Blanco	Dedicated Acreage: 320 Acres	

1. Outline the acreage dedicated to the subject well by colored pencil or hachure marks on the plat below.
2. If more than one lease is dedicated to the well, outline each and identify the ownership thereof (both as to working interest and royalty).
3. If more than one lease of different ownership is dedicated to the well, have the interests of all owners been consolidated by communitization, unitization, force-pooling, etc?

☐ Yes ☐ No If answer is "yes," type of consolidation _____

If answer is "no," list the owners and tract descriptions which have actually been consolidated. (Use reverse side of this form if necessary.) _____

No allowable will be assigned to the well until all interests have been consolidated (by communitization, unitization, forced-pooling, or otherwise) or until a non-standard unit, eliminating such interests, has been approved by the Commission.



CERTIFICATION

I hereby certify that the information contained herein is true and complete to the best of my knowledge and belief.

CC Parsons

Name

Curtis C. Parsons

Position

District Engineer

Company

Southland Royalty Company

Date

December 4, 1979

I hereby certify that the well location shown on this plat was plotted from field notes of actual surveys made by me or under my supervision, and that the same is true and correct to the best of my knowledge and belief.

Date Surveyed

October 31, 1979

Registered Professional Engineer
and/or Land Surveyor

Fred B. Kerr, Jr.
Fred B. Kerr, Jr.

Certified by the State of New Mexico

3950

F. B. KERR, JR.

SOUTHLAND ROYALTY COMPANY - DRILLING SCHEDULE

M c C L A N A H A N # 2 0 E

1840' FNL & 1660' FWL
Section 13, T28N, R10W
San Juan County, New Mexico

Field: Basin Dakota/Blanco Mesa Verde Elevation: 5777' GR

Geology:

Formation Tops:	Ojo Alamo	1240'	Gallup	5460'
	Fruitland	1730'	Graneros	6290'
	Pictured Cliffs	1965'	Dakota	6410'
	Cliff House	3570'	Total Depth	6610'
	Point Lookout	4270'		

Logging Program: IES and GR-Density from Total Depth to surface casing.

Drilling:

Contractor:

Tool Pusher:

SRC Representative:

SRC Answering Service: 325-1841
Dispatch Number: 325-7391

Mud Program: Fresh water to 5450'. Mud up at 5450'. Maintain mud weight of 8.9 to 9.3, viscosity of 35 to 40 sec, water loss of 10 to 12 cc. Anticipate losing circulation in the bottom of the Gallup zone at 5700' and in the top of the Dakota zone at 6500'. Have LCM available on location.

Materials:

Casing Program:	Hole Size	Depth	Casing Size	Wt. & Grade
	12 1/4"	200'	8 5/8"	24# H-40
	7 7/8"	6610'	5 1/2"	15.5# K-55

Float Equipment:

8 5/8" Surface Casing: Pathfinder type "A" guide shoe.

5 1/2" Production Casing: Pathfinder type "A" guide shoe. Self-fill flapper type float collar, run one joint above shoe. 5 Pathfinder bow-type stabilizers run every other joint above shoe. Run Dowell stage tools at 4670' and 2150'. Run one cement basket below and 5 Pathfinder rigid stabilizers above each tool.

Wellhead Equipment: 8 5/8" x 10", 2000# casing head with 5 1/2" casing hanger 6", 2000# x 10", 2000# tubing head and tree

Cementing:

8 5/8" Surface Casing: 140 sacks (165 cu. ft.) of Class "B" with 1/4# gel flake per sack and 3% CaCl_2 . WOC 12 hours. Test to 600# prior to drilling out. (Volume is 100% excess.)

5 1/2" Production Casing: STAGE ONE: 170 sacks (249 cu. ft.) of 50/50 Poz with 6% gel, 1/4# gel flake per sack, followed by 50 sacks of neat with 2% CaCl_2 . (Volume is 25% excess to cover top of Gallup.)

STAGE TWO: 190 sacks (286 cu. ft.) of 50/50 Poz with 6% gel followed by 50 sacks of neat with 2% CaCl_2 . (50% excess to cover top of Cliff House.)

STAGE THREE: 160 sacks (236 cu. ft.) of 50/50 Poz with 6% gel. (Volume is 50% excess to cover top of Ojo Alamo.)

WOC and circulate between stages as required by well conditions.

L. O. Van Rayan
District Production Manager

BJM/ke



Southland Royalty Company

December 4, 1979

United States Geological Survey
Mr. James Sims
P. O. Box 959
Farmington, NM 87401

Dear Sir:

Enclosed please find a map showing existing roads and planned access roads to Southland Royalty Company's McClanahan #20E well.

The locations of tank batteries and flow lines will be on location with well. A burn pit will be provided for disposal of trash. Cuttings, drilling fluid and produced fluids will be put into the reserve pit and properly disposed of depending on amount and type of fluids.

There will be no camps or airstrips.

Also, enclosed is a location layout showing approximate location of rig, pits and pipe racks.

Water supply will be the Blanco Wash.

The location will be restored according to Bureau of Land Management standards. This work will begin when all related construction is finished.

Mr. Ross Lankford will be Southland Royalty Company's field representative supervising these operations.

Yours truly,

C. C. Parsons
Curtis C. Parsons
District Engineer

CCP/ke



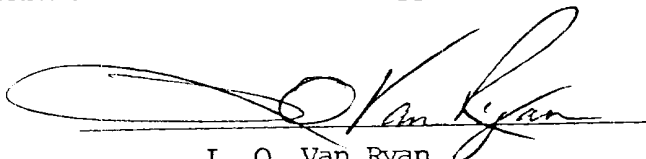
Southland Royalty Company

United States Geological Survey
Mr. James Sims
P. O. Box 595
Farmington, NM 87401

Dear Sir:

I hereby certify that I, or persons under my direct supervision, have inspected the proposed drillsite and access route; that I am familiar with the conditions which presently exist; that the statements made in this plan are, to the best of my knowledge, true and correct; and, that the work associated with the operations proposed herein will be performed by Southland Royalty Company and its contractors and subcontractors in conformity with this plan and the terms and conditions under which it is approved.

Date: December 4, 1979



L. O. Van Ryan
District Production Manager

LOVR/ke



Southland Royalty Company

December 4, 1979

United States Geological Survey
Mr. James Sims
P. O. Box 959
Farmington, NM 87401

RE: Blowout Preventer Plan

Dear Sir:

All drilling and completion rigs will be equipped with 6" or larger double hydraulic blowout preventers and a hydraulic closing unit with steel lines.

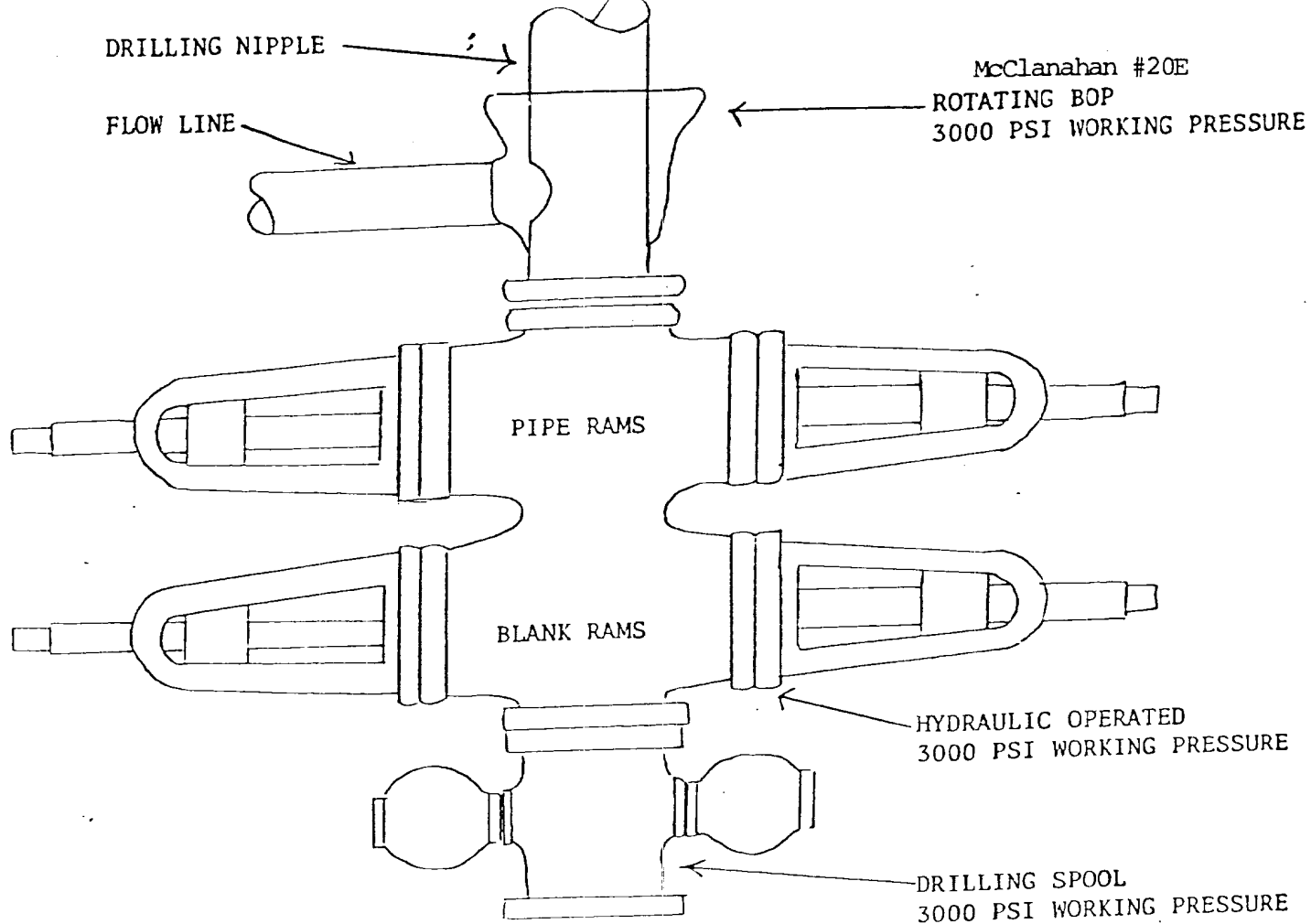
The preventer is 3000# working pressure and 6000# test pressure.

All crews will be thoroughly trained in the operation of this preventer. The preventer will be tested frequently enough to insure proper operation.

Yours truly,

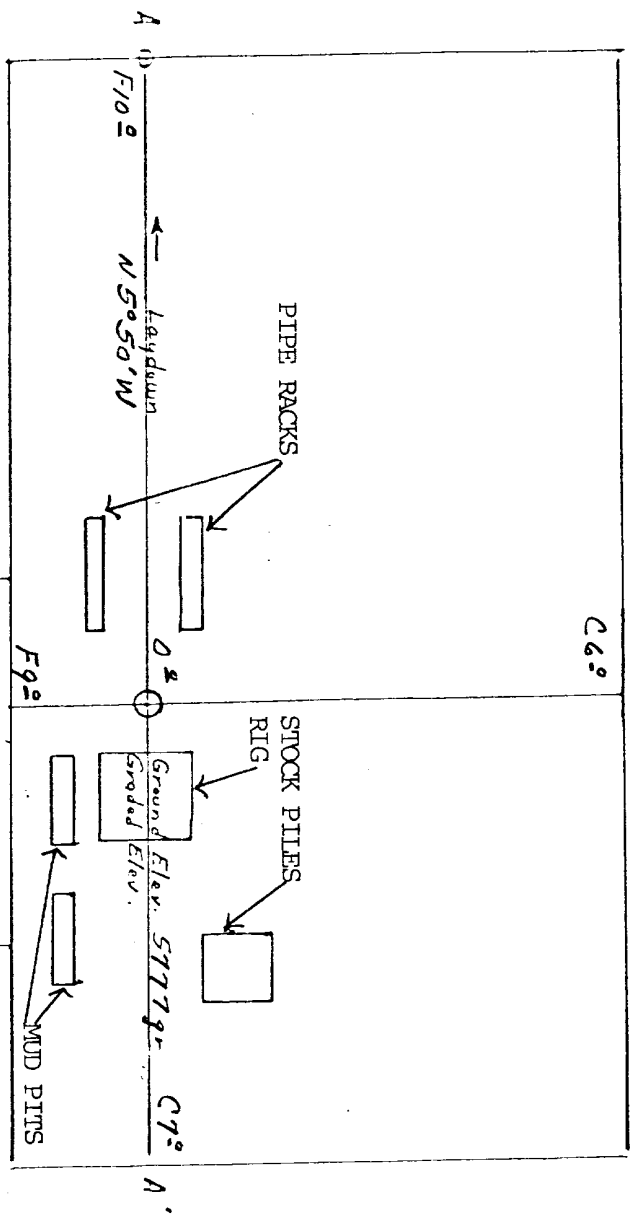
C C Parsons
Curtis C. Parsons
District Engineer

CCP/ke



PREVENTERS AND SPOOLS ARE TO HAVE
THROUGH BORE OF 6" - 3000 PSI OR LARGER

Location Profile for
 SOUTHLAND ROYALTY CO. #20-E McCLANAHAN
 1840' FNL 1660' FWL Sec. 13-T28N-R10W San Juan County, New Mexico

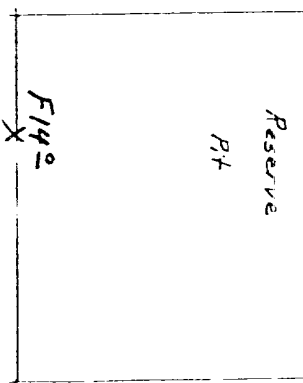


Vert. 1"=40' A-A' Horiz. 1"=100'

5780		
5770		
5760		

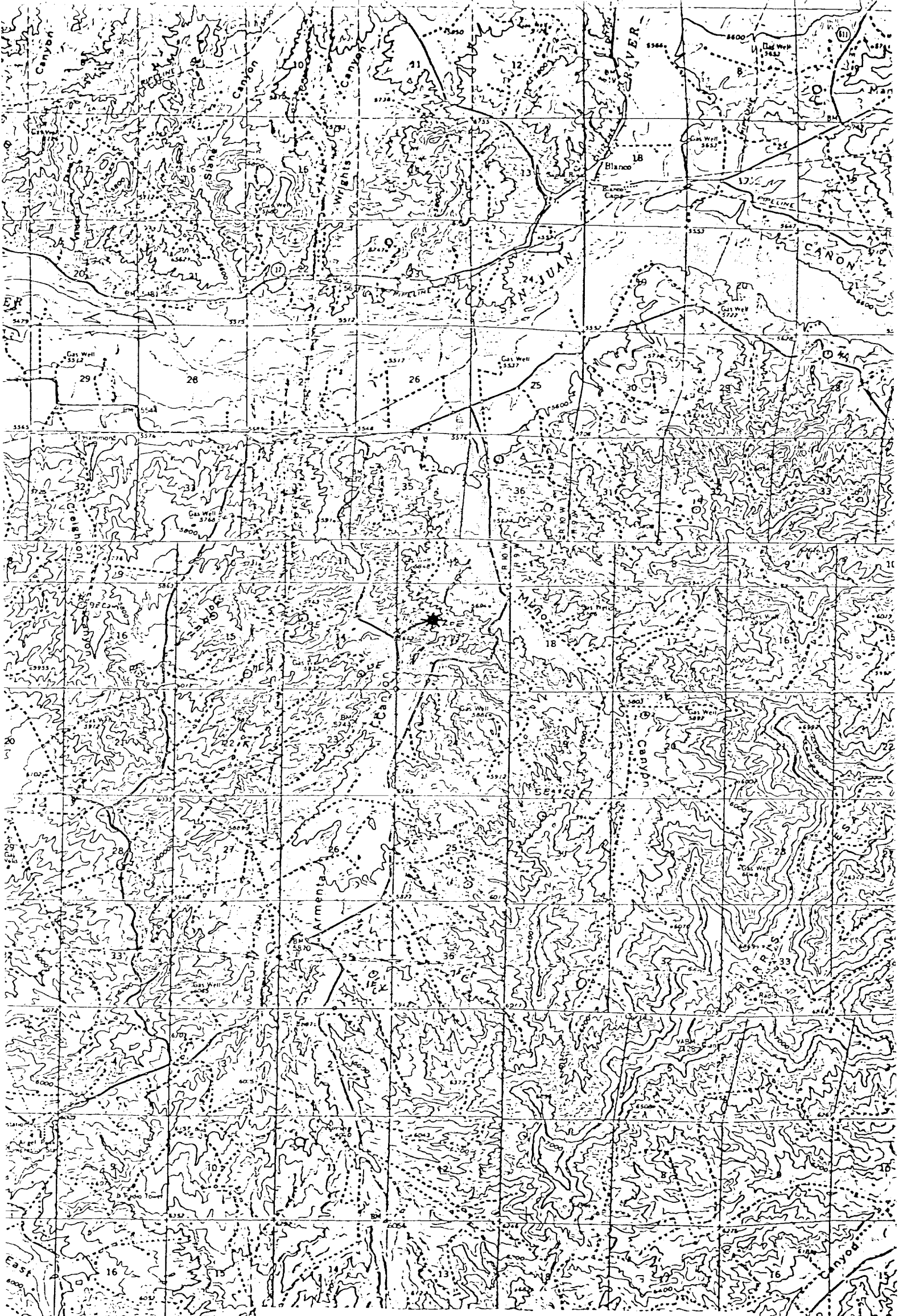
B-B' Horiz. 1"=100'

5780		
5770		
5760		



Vert. 1"=40' C-C' Horiz. 1"=100'

D-D' Horiz. 1"=100'



PROPOSED LOCATION ★
EXISTING LOCATIONS ○
PROPOSED ROAD - - -
EXISTING ROADS —

Vicinity Map for
SOUTHLAND ROYALTY CO. #20-E McCLANAHAN
1840'FNL 1660'FWL Sec 13-T28N-R10W
SAN JUAN COUNTY, NEW MEXICO