

UNITED STATES
DEPARTMENT OF THE INTERIOR
GEOLOGICAL SURVEY

APPLICATION FOR PERMIT TO DRILL, DEEPEN, OR PLUG BACK

1a. TYPE OF WORK

DRILL ☒DEEPEN ☐PLUG BACK ☐

b. TYPE OF WELL

OIL
WELL ☐GAS
WELL ☒

OTHER

SINGLE
ZONE ☒MULTIPLE
ZONE ☐

2. NAME OF OPERATOR

SUPRON ENERGY CORPORATION

3. ADDRESS OF OPERATOR

P.O. Box 808, Farmington, New Mexico 87401

4. LOCATION OF WELL (Report location clearly and in accordance with any State requirements.)

At surface

990 ft./South line and 1120 ft./West line

At proposed prod. zone

Same as above

14. DISTANCE IN MILES AND DIRECTION FROM NEAREST TOWN OR POST OFFICE*

9 miles southeast of Bloomfield, New Mexico

15. DISTANCE FROM PROPOSED*

LOCATION TO NEAREST

PROPERTY OR LEASE LINE, FT.

(Also to nearest drlg. unit line, if any)

990 ft.

990 ft.

18. DISTANCE FROM PROPOSED LOCATION*

TO NEAREST WELL, DRILLING, COMPLETED,
OR APPLIED FOR, ON THIS LEASE, FT.

160 ft.

16. NO. OF ACRES IN LEASE

160.00

19. PROPOSED DEPTH

3040

17. NO. OF ACRES ASSIGNED
TO THIS WELL

SW 1/4 160.00

20. ROTARY OR CABLE TOOLS

Rotary

21. ELEVATIONS (Show whether DF, RT, GR, etc.)

5814 ft.

22. APPROX. DATE WORK WILL START*

December 20, 1980

23. PROPOSED CASING AND CEMENTING PROGRAM

SIZE OF HOLE	SIZE OF CASING	WEIGHT PER FOOT	SETTING DEPTH	QUANTITY OF CEMENT
12-1/4"	7-5/8"	24.00	200	150 sx circulated
6-3/4"	2-7/8"	6.50	3040	300 sx

DRILLING OPERATIONS AUTHORIZED ARE
SUBJECT TO OIL CON. COM. APPROVEDThis action is subject to administrative
appeal pursuant to 30 CFR 290.

GENERAL NOTE: We desire to drill 12-1/4" surface hole to approximately 200 feet with natural mud. Run new 7-5/8" 24.00# casing and cement in place. Cement to be circulated to surface. Pressure test surface casing. Drill 6-3/4" hole to T.D. of approximately 3040 feet using mud as the circulating medium. Log the well. Run new 2-7/8" 6.50# casing to T.D. and cement in place. Log the well. Pressure test the casing. Perforate the Chacra zone and fracture to stimulate production. Clean the well up. Nipple down the well head. Test the well and connect to a gathering system.

This gas has previously been dedicated to a transporter.

IN ABOVE SPACE DESCRIBE PROPOSED PROGRAM: If proposal is to deepen or plug back, give data on present productive zone and proposed new productive zone. If proposal is to drill or deepen directionally, give pertinent data on subsurface locations and measured and true vertical depths. Give blowout preventer program, if any.

24.

SIGNED

Rudy D. Motto

TITLE Area Superintendent

DATE December 16, 1980

(This space for Federal or State office use)

APPROVED
AS AMENDED

PERMIT NO.

APPROVAL DATE

APPROVED BY

JAN 05/1981

TITLE

DATE

CONDITIONS OF APPROVAL IF ANY

JAMES F. SIMS
DISTRICT ENGINEER

NMOCC

**NEW MEXICO OIL CONSERVATION COMMISSION
WELL LOCATION AND ACREAGE DEDICATION PLAT**

Form C-102
Supersedes C-121
Effective 1-1-65

All distances must be from the outer boundaries of the Section.

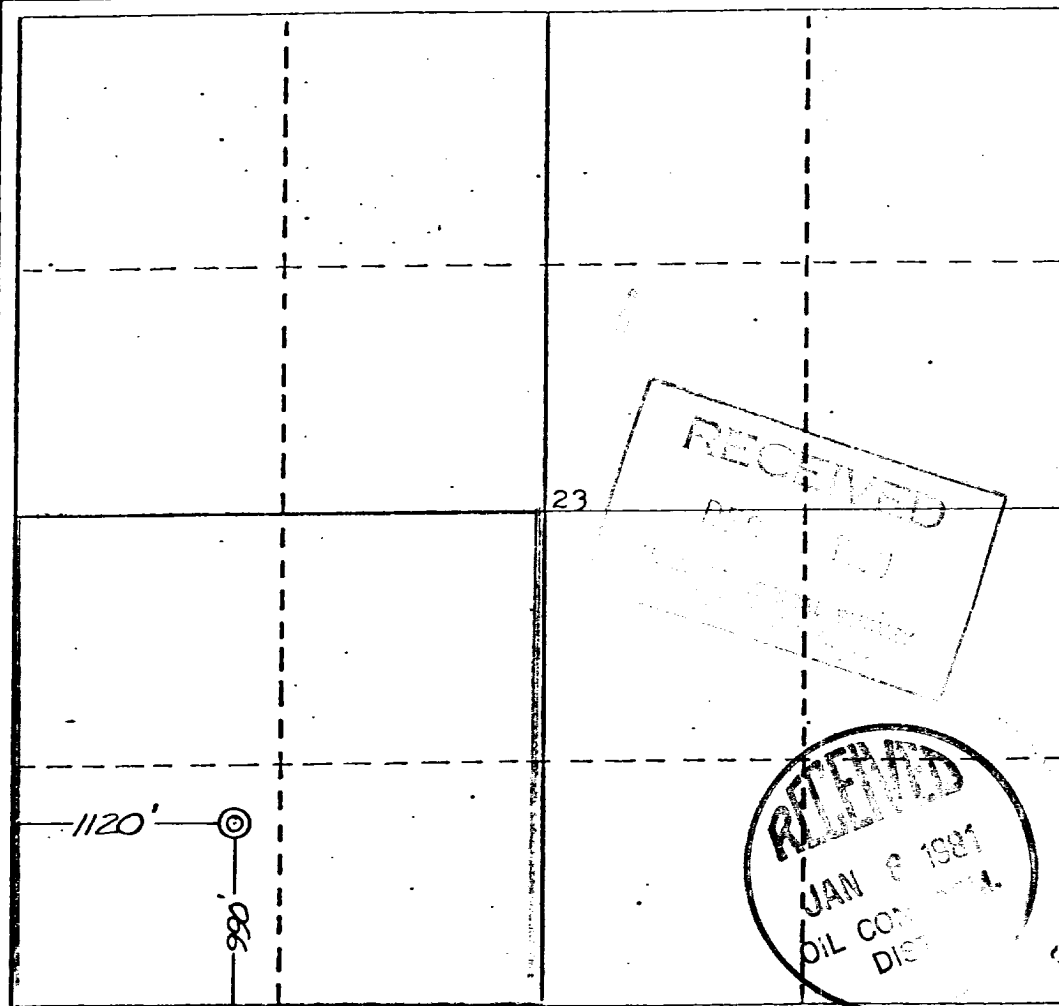
Operator SUPRON ENERGY CORPORATION			Lease MCCLANHAN		Well No. A-3
Unit Letter M	Section 23	Township 28 NORTH	Range 10 WEST	County SAN JUAN	
Actual Footage Location of Well:					
990 feet from the SOUTH line and		1120 feet from the WEST line			
Ground Level Elev. 5814	Producing Formation Chacra	Pool Wildcat	Dedicated Acreage: SW 1/4 160.00 Acres		

1. Outline the acreage dedicated to the subject well by colored pencil or hachure marks on the plat below.
2. If more than one lease is dedicated to the well, outline each and identify the ownership thereof (both as to working interest and royalty).
3. If more than one lease of different ownership is dedicated to the well, have the interests of all owners been consolidated by communitization, unitization, force-pooling, etc?

☐ Yes ☐ No If answer is "yes," type of consolidation _____

If answer is "no," list the owners and tract descriptions which have actually been consolidated. (Use reverse side of this form if necessary.) _____

No allowable will be assigned to the well until all interests have been consolidated (by communitization, unitization, forced-pooling, or otherwise) or until a non-standard unit, eliminating such interests, has been approved by the Commission.



CERTIFICATION

I hereby certify that the information contained herein is true and complete to the best of my knowledge and belief.

Rudy D. Motto

Name _____

Rudy D. Motto

Position _____

Area Superintendent

Company _____

SUPRON ENERGY CORPORATION

Date _____

November 20, 1980



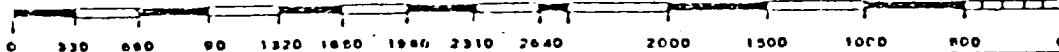
November 17, 1980

Date Surveyed _____

Registered Professional Engineer
and/or Land Surveyor

James P. Leese
James P. Leese

Certificate No.
1463



SUPRON ENERGY CORPORATION
POST OFFICE Box 808
FARMINGTON, NEW MEXICO 87401

December 16, 1980

United States Geological Survey
P.O. Box 959
Farmington, New Mexico 87401

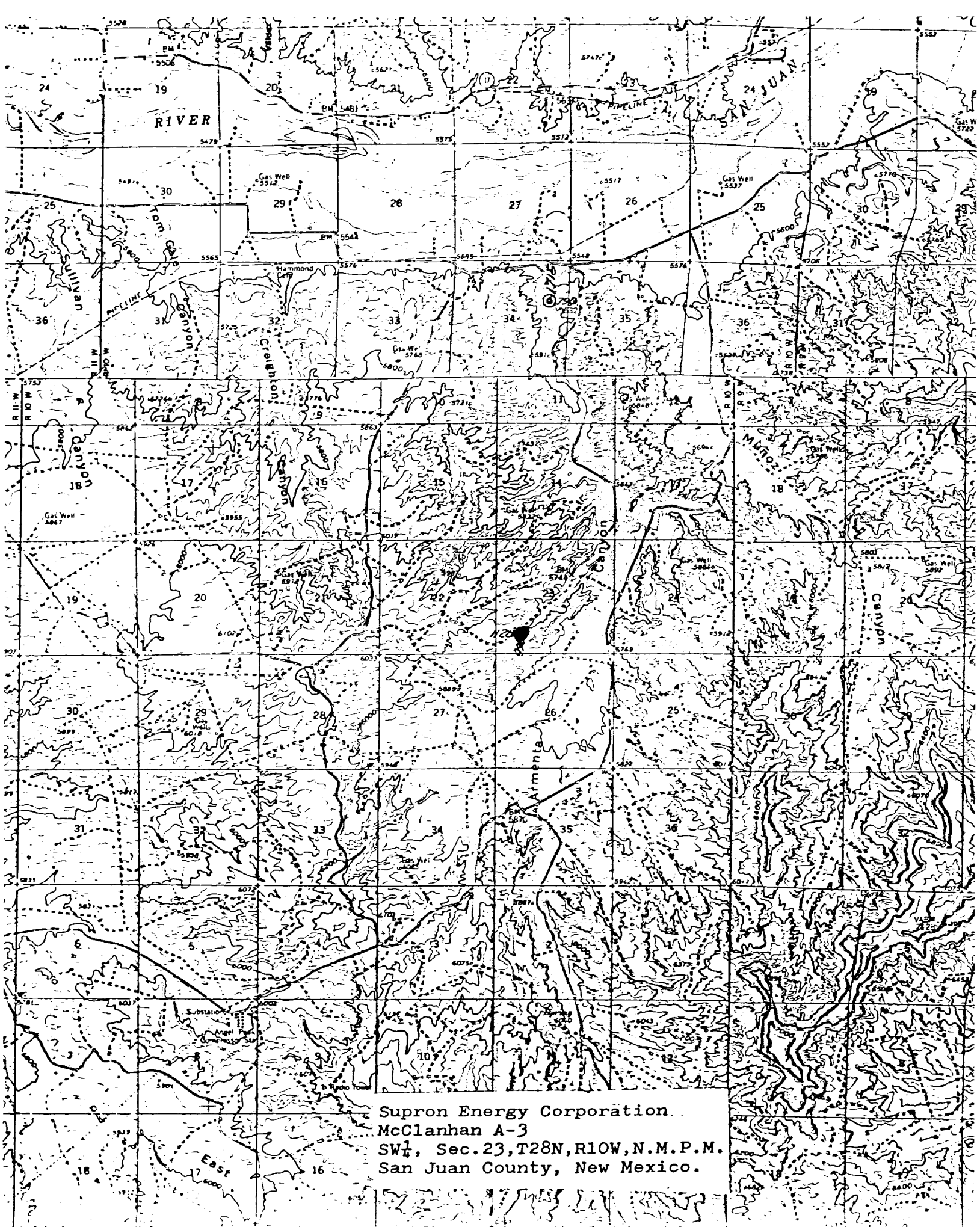
Attention: Mr. James Sims

Dear Sir:

Supron Energy Corporation proposes to drill the McClanahan "A" No. 3 well located 990 feet from the South line and 1120 feet from the West line of Section 23, Township 28 North, Range 10 West, N.M.P.M., San Juan County, New Mexico.

The following attachments are included with this application:

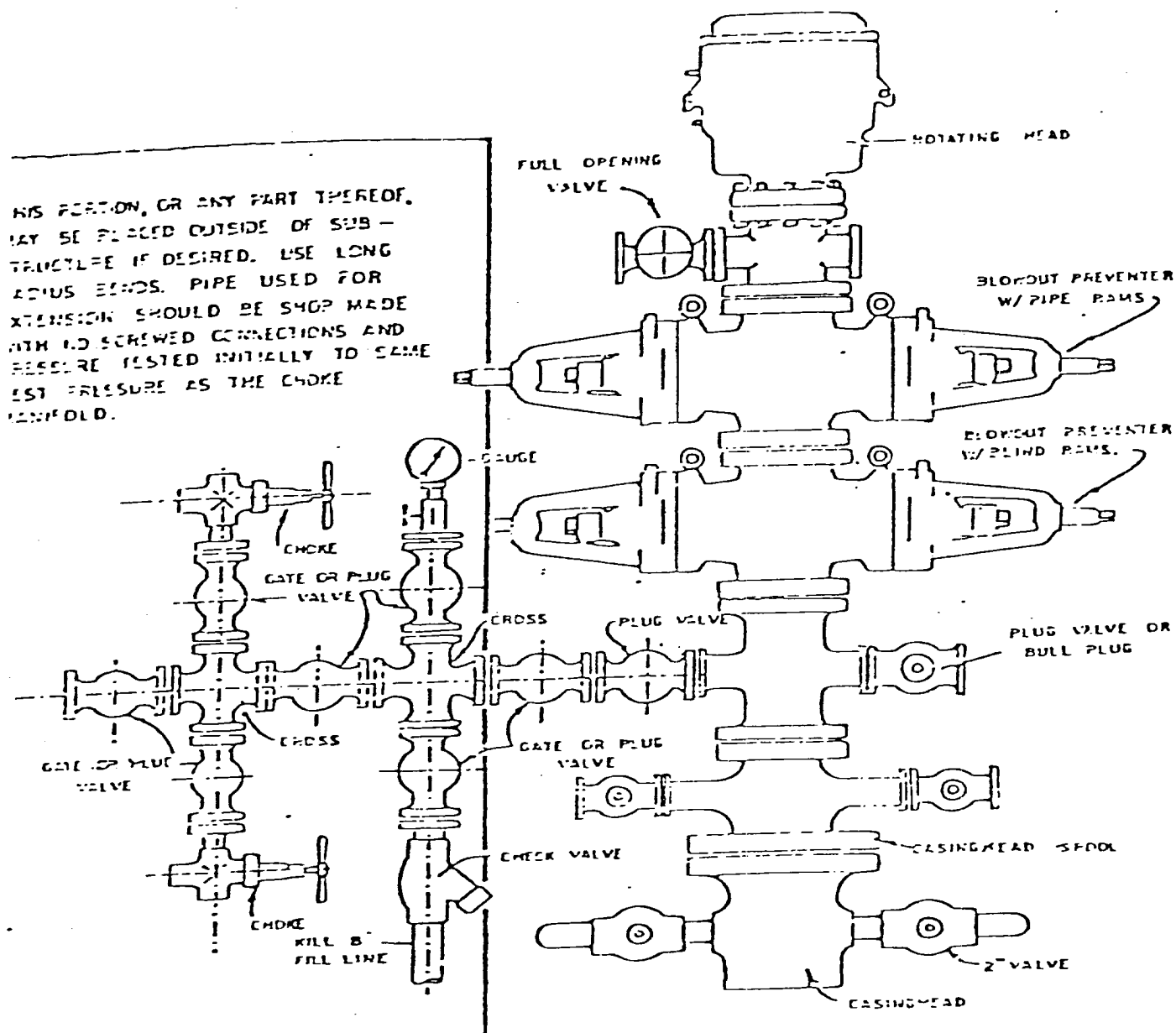
1. Map of existing roads.
2. No access road is needed.
3. Location of existing wells.
4. Lateral roads to well locations.
5. Location of surface equipment if required.
6. Drilling and completion water will be obtained from the San Juan River.
7. Waste will be disposed of by being placed in the reserve pit and buried upon completion of the well.
8. There will be no camp at or near the well site.
9. There will be no air strip.
10. A plat is attached showing the location of the rig, mud tanks, reserve pit, burn pit and etc.
11. A letter of certification is attached. The operator representative, for compliance purposes, is Rudy D. Motto, Area Superintendent, P.O. Box 808, Farmington, New Mexico. Phone (505) 325-3587.
12. After the well is completed the location will be cleaned up and bladed. The reserve pit will be allowed to dry then it will be filled and re-stored to its natural state.
13. The soil is sandy clay loam with the principal vegetation being sagebrush, juniper, snakeweed, ricegrass, grama, prickley pear cactus, narrow leaf yucca and russian thistle.



Supron Energy Corporation
McClanhan A-3
SW $\frac{1}{4}$, Sec. 23, T28N, R10W, N.M.P.M.
San Juan County, New Mexico.

Blowout Preventer will be tested daily and prior to drilling out with the results to be logged on the drillers report.

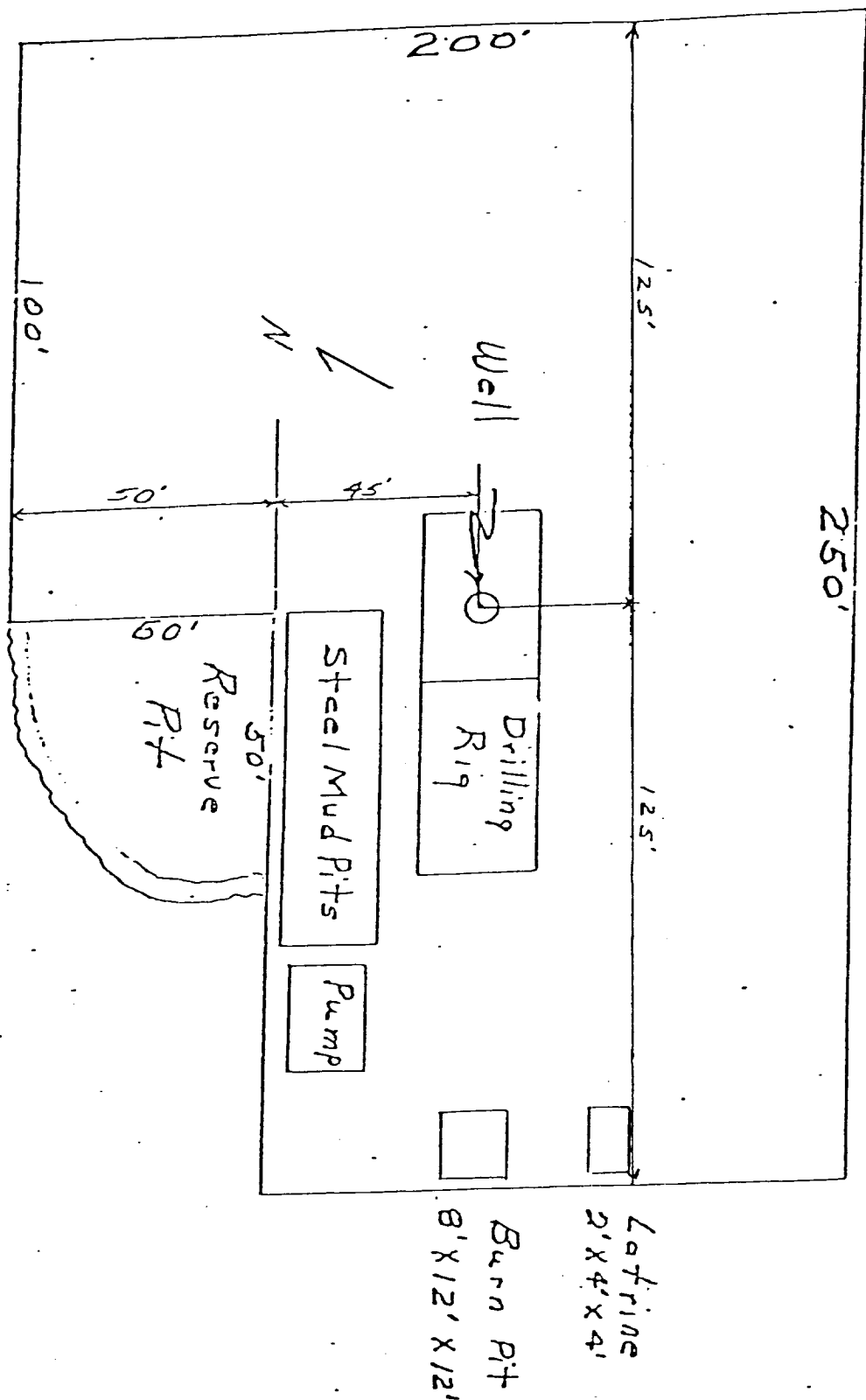
The B.O.P. and all valve and fittings are rated at 3000 psi working pressure, and hydraulically operated



BLOWOUT PREVENTER HOCKUP

LOCATION AND EQUIPMENT LAYOUT

SUPRON ENERGY CORPORATION
 McClanahan "A" No. 3
 990' S ; 1120' W line
 Sec. 23, T-28N, R-10W
 San Juan County, New Mexico



SUPRON ENERGY CORPORATION
Post Office Box 808
FARMINGTON, NEW MEXICO 87401

I hereby certify that I, or persons under my direct supervision, have inspected the proposed drillsite and access route; that I am familiar with the conditions which presently exist; that the statements made in this plan are, to the best of my knowledge, true and correct; and, that the work associated with the operations proposed herein will be performed by SUPRON ENERGY CORPORATION and its contractors subcontractors in conformity with this plan and the terms and conditions under which it is approved.

SUPRON ENERGY CORPORATION

A handwritten signature in cursive script, reading "Rudy D. Motto".

Rudy D. Motto
Area Superintendent
Phone: 325-3587

SUPRON ENERGY CORPORATION

McClanahan "A" No. 3
SW ¼ Sec. 23, T-28N, R-10W, NMPM
San Juan County, New Mexico

1. The Geologic name of the surface formation is "Wasatch".
2. The estimated tops of important Geologic markers are:
 - A. Top of the Ojo Alamo 820 ft.
 - B. Top of Kirtland 975 ft.
 - C. Top of the Fruitland 1745 ft.
 - D. Top of the Pictured Cliffs 1860 ft.
 - E. Top of the Chacra 2845 ft.
3. The estimated depth at which anticipated water, oil or other mineral bearing formations are expected to be encountered are:
 - A. Top of the Ojo Alamo 820 ft. Water
 - B. Top of Kirtland 975 ft. Water
 - C. Top of the Fruitland 1745 ft. Water
 - D. Top of the Pictured Cliffs 1860 ft. Gas
 - E. Top of the Chacra 2845 ft. Gas
4. The casing program is shown on 9-331C and all casing is new.
5. The lessee's pressure control equipment schematics are attached along with minimum specifications, testing procedures and frequencies.
6. The type, estimated volumes and characteristics of the circulating medium are as follows:
 - A. 0 to 200 ft. Natural mud.
 - B. 200 to 3040 ft. Permaloid non-dispersed mud containing approx. 67 sx of Permaloid and 10 sx of C.M.C.
7. The auxiliary equipment will be floats at the bit and a sub on the floor with a full opening valve to be stabbed into the drill pipe when the kelly is not in the string.
8. This well is in an area which is heavily developed; therefore we will not have a testing or coring program. The logging program is as follows:
 - A. E.S. Induction
 - B. Gamma Ray Density
 - C. Gamma Ray Correlation
 - D. Cement Bond or Temperature
9. We do not expect to find any abnormal pressures, temperatures or hydrogen sulfide problems in this heavily developed area.
10. The anticipated starting date for this well is December 30, 1980.

