

UNITED STATES
DEPARTMENT OF THE INTERIOR
GEOLOGICAL SURVEY

APPLICATION FOR PERMIT TO DRILL, DEEPEN, OR PLUG BACK

1a. TYPE OF WORK DRILL ☒ DEEPEN ☐ PLUG BACK ☐

b. TYPE OF WELL
OIL WELL ☐ GAS WELL ☒ OTHER ☐ SINGLE ZONE ☐ MULTIPLE ZONE ☒

2. NAME OF OPERATOR

Tenneco Oil Company

3. ADDRESS OF OPERATOR

P. O. Box 3249, Englewood, CO 80155

4. LOCATION OF WELL (Report location clearly and in accordance with any State requirements.)

At surface
1285' FNL, 1260' FWL
At proposed prod. zone

14. DISTANCE IN MILES AND DIRECTION FROM NEAREST TOWN OR POST OFFICE

9 miles SE, Blanco, NM

15. DISTANCE FROM PROPOSED*
LOCATION TO NEAREST
PROPERTY OR LEASE LINE, FT.
(Also to nearest drlg. unit line, if any)

1260'

18. DISTANCE FROM PROPOSED LOCATION*
TO NEAREST WELL, DRILLING, COMPLETED,
OR APPLIED FOR, ON THIS LEASE, FT.

16. NO. OF ACRES IN LEASE

920 A

19. PROPOSED DEPTH

± 7000'

17. NO. OF ACRES ASSIGNED
TO THIS WELL

W 320 A

20. ROTARY OR CABLE TOOLS

Rotary

21. ELEVATIONS (Show whether DF, RT, GR, etc.)

6141' GL DRILLING OPERATIONS AUTHORIZED ARE

23. SUBJECT TO COMPLIANCE WITH ATTACHED AND CEMENTING PROGRAM

"GENERAL REQUIREMENTS"

This action is subject to technical and
procedural review pursuant to 43 CFR 3165.3
and appeal pursuant to 43 CFR 3165.4.

SIZE OF HOLE	SIZE OF CASING	WEIGHT PER FOOT	SETTING DEPTH
12 1/4"	9 5/8"	36.0 #	± 280'
8 3/4"	7"	23.0 #	± 5263'
6 1/4"	4 1/2"	10.50 #	± 7000'

Circ. cmt. to surface
Circ. cmt. to surface
Circ. cmt. to liner top

See attachments.

The gas is dedicated.

RECEIVED

SEP 23 1985

OIL CON. DIV.
DIST. 3

IN ABOVE SPACE DESCRIBE PROPOSED PROGRAM: If proposal is to deepen or plug back, give data on present productive zone and proposed new productive zone. If proposal is to drill or deepen directionally, give pertinent data on subsurface locations and measured and true vertical depths. Give blowout preventer program, if any.

24.

SIGNED

Scott McKinney

TITLE Senior Regulatory Analyst

(This space for Federal or State office use)

PERMIT NO.

APPROVAL DATE

APPROVED BY

TITLE

CONDITIONS OF APPROVAL, IF ANY:

APPROVED 1985

AS AMENDED

SEP 20 1985

/s/ J. Stan McKee

AREA MANAGER
FARMINGTON RESOURCE AREA

MSL 2125
B.K.M.

NMOCE

NEW MEXICO OIL CONSERVATION COMMISSION
WELL LOCATION AND ACREAGE DEDICATION PLAT

Form C-102
Supersedes C-128
Effective 1-1-65

All distances must be from the outer boundaries of the Section.

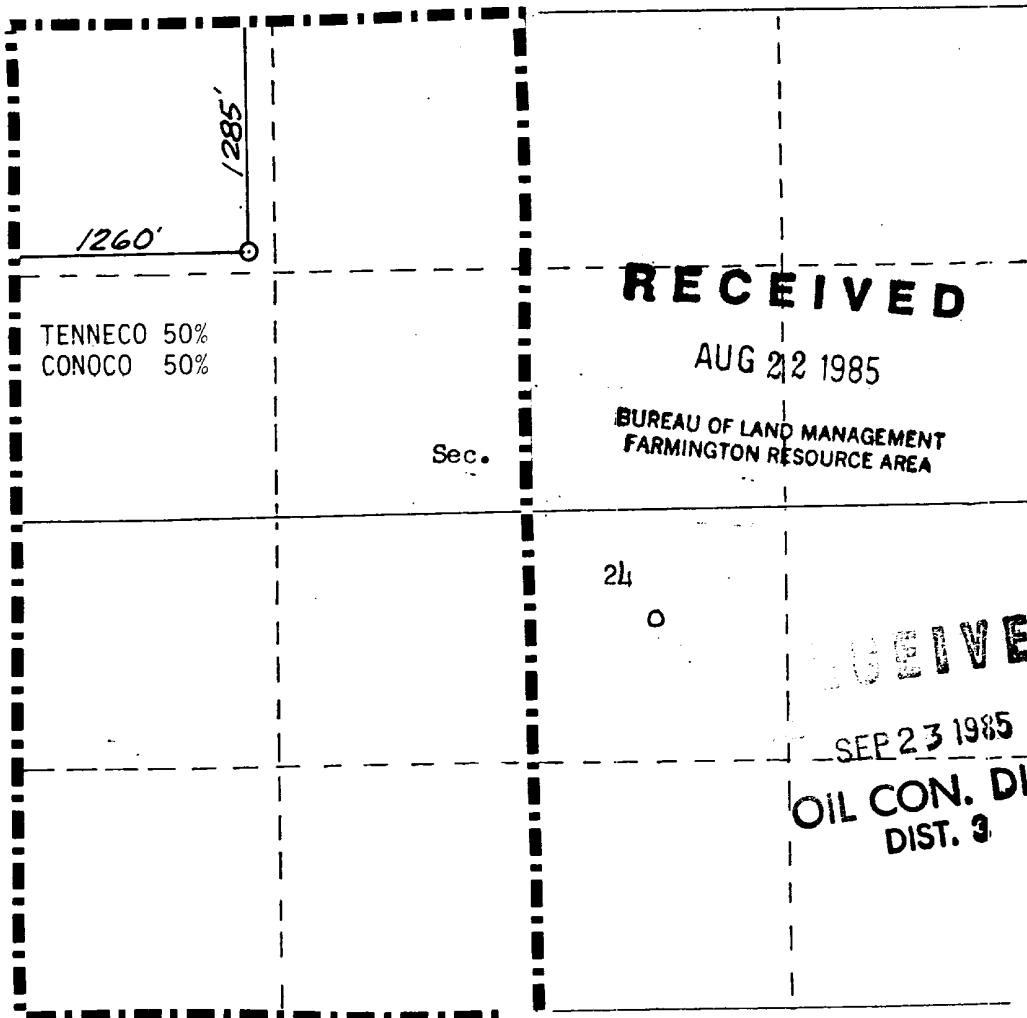
Operator TENNECO OIL COMPANY			Lease McCULLEY LS		Well No. 5M
Unit Letter D	Section 24	Township 28N	Range 9W	County San Juan	
Actual Footage Location of Well: 1285 feet from the North line and 1260 feet from the West line					
Ground Level Elev: 6141	Producing Formation Dakota-Mesa Verde		Pool Basin Dakota/Blanco Mesaverde		Dedicated Acreage: 320 A Acres

1. Outline the acreage dedicated to the subject well by colored pencil or hatchure marks on the plat below.
2. If more than one lease is dedicated to the well, outline each and identify the ownership thereof (both as to working interest and royalty).
3. If more than one lease of different ownership is dedicated to the well, have the interests of all owners been consolidated by communitization, unitization, force-pooling, etc?

☐ Yes ☒ No If answer is "yes," type of consolidation _____

If answer is "no," list the owners and tract descriptions which have actually been consolidated. (Use reverse side of this form if necessary.) _____

No allowable will be assigned to the well until all interests have been consolidated (by communitization, unitization, forced-pooling, or otherwise) or until a non-standard unit, eliminating such interests, has been approved by the Commission.



CERTIFICATION

I hereby certify that the information contained herein is true and complete to the best of my knowledge and belief.

Scott McKinney

Name
Scott McKinney
Position
Sr. Regulatory Analyst

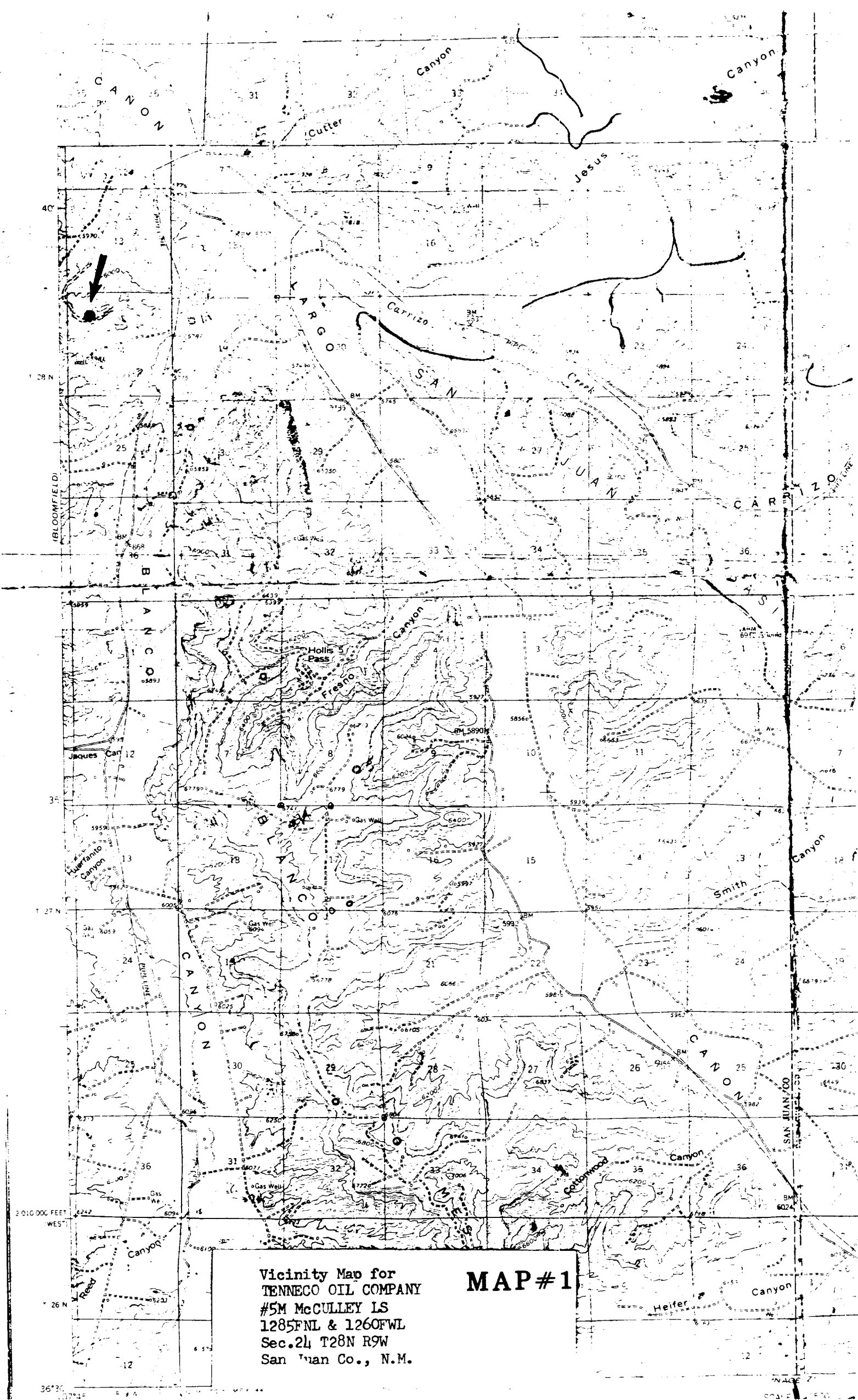
Company
Tenneco Oil Co.

Date
July 29, 1985

I hereby certify that the well location shown on this plat was plotted from field notes of actual surveys made by me or under my supervision, and that the same is true and correct to the best of my knowledge and belief.

Date Surveyed
July 29, 1985
Registered Professional Engineer and Land Surveyor
#0466

William E. Mahne
Certified Professional Land Surveyor



Vicinity Map for
TENNECO OIL COMPANY
#5M McCULLEY LS
1285FNL & 1260FWL
Sec. 24 T28N R9W
San Juan Co., N.M.

MAP #1