

**MEXICO OIL CONSERVATION COMMISSION
WELL LOCATION AND ACREAGE DEDICATION PLAT**

Form C-102
Supersedes C-
Effective 1-1-

All distances must be from the outer boundaries of the Section.

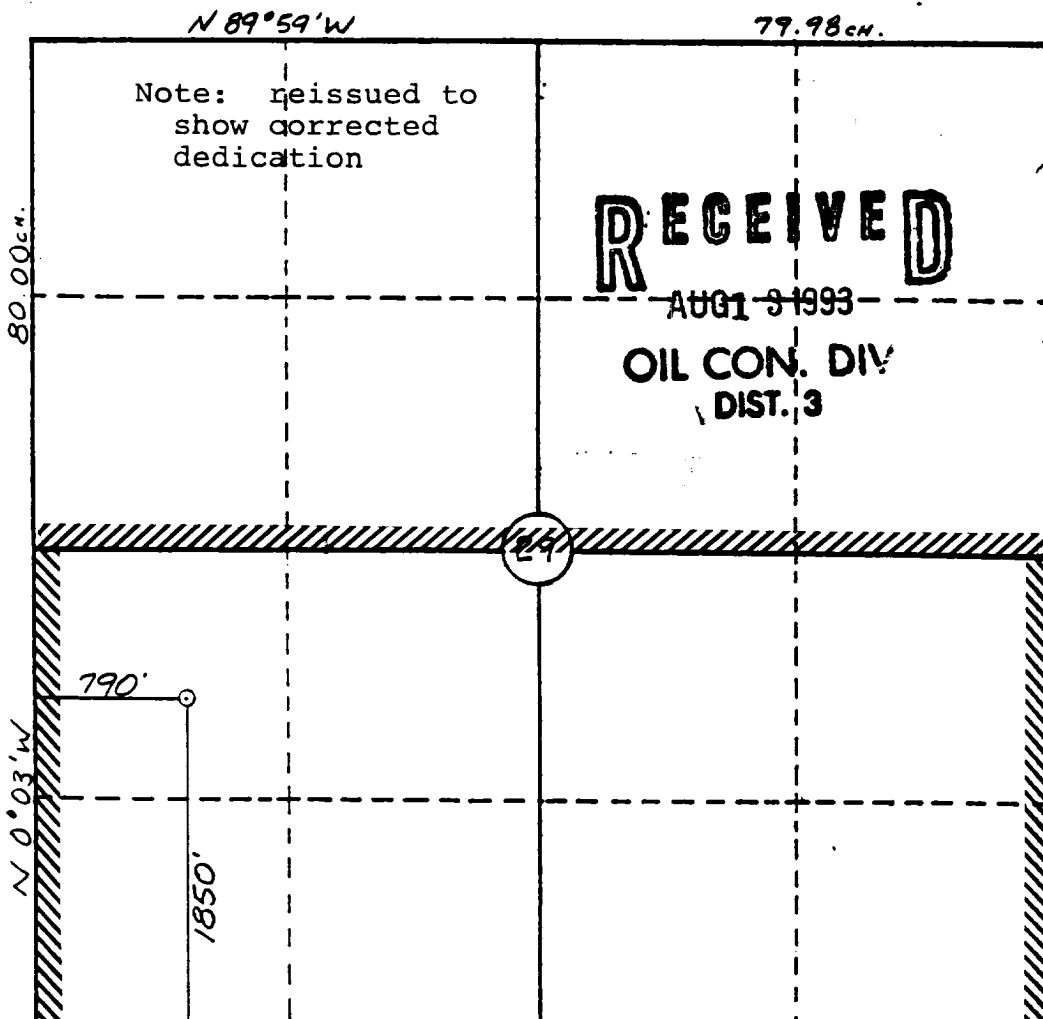
Operator MERIDIAN OIL, INC.		Lessee HANCOCK		Well No. 712
Unit Letter L	Section 29	Township 29 N	Range 9 W	County SAN JUAN
Actual Footage Location of Well: 1850 feet from the South line and 790 feet from the West line				
Ground Level Elev: 5941	Producing Formation Fruitland Coal	Pool Basin	Dedicated Acreage 320	

1. Outline the acreage dedicated to the subject well by colored pencil or hatchure marks on the plat below.
2. If more than one lease is dedicated to the well, outline each and identify the ownership thereof (both as to working interest and royalty).
3. If more than one lease of different ownership is dedicated to the well, have the interests of all owners been consolidated by communitization, unitization, force-pooling, etc?

☐ Yes ☐ No If answer is "yes," type of consolidation _____

If answer is "no," list the owners and tract descriptions which have actually been consolidated. (Use reverse side this form if necessary.) _____

No allowable will be assigned to the well until all interests have been consolidated (by communitization, unitization, forced-pooling, or otherwise) or until a non-standard unit, eliminating such interests, has been approved by the Commission.



CERTIFICATION

I hereby certify that the information contained herein is true and complete to the best of my knowledge and belief.

Name Peggy Bradfield

Position Regulatory Rep.

Company Meridian Oil Inc.

Date 8-11-93

I hereby certify that the well location shown on this plat was plotted from the notes of actual surveys made by me, under my supervision, and that the same is true and correct to the best of my knowledge and belief.

Date Surveyed W/11/93
W/11/93
Registered Professional Engineer and/or Land Surveyor
W/11/93