

30 1-57-2/321

UNITED STATES  
DEPARTMENT OF THE INTERIOR  
BUREAU OF LAND MANAGEMENT

APPLICATION FOR PERMIT TO DRILL, DEEPEN, OR PLUG BACK

1a. TYPE OF WORK DRILL	5. LEASE NUMBER SF-077107A
1b. TYPE OF WELL GAS	6. IF INDIAN, ALL. OR TRIBE NAME
2. OPERATOR MERIDIAN OIL INC.	7. UNIT AGREEMENT NAME
3. ADDRESS & PHONE NO. OF OPERATOR P O BOX 4289 FARMINGTON, NM 87499	8. FARM OR LEASE NAME HANCOCK B
4. LOCATION OF WELL 865'S 1020'W	9. WELL NO. 714
14. DISTANCE IN MILES FROM NEAREST TOWN 11 MILES FROM BLOOMFIELD	10. FIELD, POOL, OR WILDCAT BASIN FRUITLAND COAL
15. DISTANCE FROM PROPOSED LOCATION TO NEAREST PROPERTY OR LEASE LINE. 865'	11. SEC. T. R. M OR BLK. M SEC. 31 T28N R09W NMPM
16. ACRES IN LEASE 17. ACRES ASSIGNED TO WELL 302.97	12. COUNTY 13. STATE SAN JUAN NM
18. DISTANCE FROM PROPOSED LOCATION TO NEAREST WELL DR. COMPL., OR APPLIED FOR ON THIS LEASE. 100'	20. ROTARY OR CABLE TOOLS ROTARY
21. ELEVATIONS (DF, FT, GR, ETC.) 6350'GL	22. APPROX. DATE WORK WILL START
23. PROPOSED CASING AND CEMENTING PROGRAM *SEE OPERATIONS PLAN	24. APPROX. DATE WORK WILL START

24. AUTHORIZED BY: *[Signature]*  
REGULATORY AFFAIRS

5-6-89  
DATE

PERMIT NO. \_\_\_\_\_ APPROVAL DATE \_\_\_\_\_  
APPROVED BY \_\_\_\_\_ TITLE \_\_\_\_\_ DATE \_\_\_\_\_

NOTE: THIS FORMAT IS ISSUED IN LIEU OF US BLM FORM 3160-2

INMOCD

APPROVED  
AS AMENDED

MAY 19 1989

AREA MANAGER

Well Name: 714 HANCOCK B  
 Sec. 31 T28N R09W  
 BASIN FRUITLAND COAL

865'S 1020'W  
 SAN JUAN NEW MEXICO  
 Elevation 6350'GL

Formation tops: Surface- NACIMIENTO  
 Ojo Alamo- 1404  
 Kirtland- 1528  
 Fruitland- 2138  
 Fruitland Coal Top- 2250  
 Fruitland Coal Base- 2378  
 Intermediate TD- 2230  
 Total Depth- 2378  
 Pictured Cliffs- 2378

Logging Program: Mud logs from intermediate to total depth.

Mud Program:	Interval	Type	Weight	Visc.	Fl. Loss
	0 - 200	Spud	8.4 - 8.9	40-50	no control
	200 - 2230	Non-dispersed	8.4 - 9.1	30-60	no control
	2230 - 2378	Formation Water	8.4		no control

Casing Program:	Hole Size	Depth Interval	Csg. Size	Weight	Grade
	12 1/4"	0 - 200	9 5/8"	32.3#	H-40
	8 3/4"	0 - 2230	7"	20.0#	K-55
	6 1/4"	2180 - 2378	5 1/2"	15.5#	K-55
Tubing Program:		0 - 2378	2 7/8"	6.5#	J-55

Float Equipment: 9 5/8" surface casing - saw tooth guide shoe.

7" intermediate casing - guide shoe and self-fill insert float valve. Three centralizers run every other joint above shoe. Run insert float one joint above the guide shoe.

5 1/2" production casing - float shoe on bottom and a pre-drilled liner run to the 7" casing with a minimum 50' overlap. Liner hanger is a double slip grip type.

Wellhead Equipment: 9 5/8" x 7" x 2 7/8" x 11" 3000 psi xmas tree assembly.

#### Cementing:

9 5/8" surface casing - cement with 106 sacks of class "B" cement with 1/4# flocele/sack and 3% calcium chloride (125 cu ft. of slurry, 100% excess to circulate to surface). WOC 12 hours. Test casing to 600 psi for 30 minutes.

7" intermediate casing - lead with 68 sacks of 65/35 class "B" poz with 6% gel, 2% calcium chloride and 1/2 cu.ft. Perlite/sack (10.3 gallons of water/sack) tail with 100 sacks of class "B" with 2% calcium chloride. 248 lu ft. of slurry, 100% excess to cover the Ojo Alamo. Run temperature survey at 8 hours. WOC 12 hours. Test casing to 1500 psi for 30 minutes.

5 1/2" liner - do not cement.

All distances must be from the outer boundaries of the Section.

Operator <b>Meridian Oil Inc.</b>		Lease <b>Hancock B (SF-077107A)</b>		Well No. <b>714</b>
Unit Letter <b>M</b>	Section <b>31</b>	Township <b>28 North</b>	Range <b>9 West</b>	County <b>San Juan</b>
Actual Footage Location of Well: <b>865</b> feet from the <b>South</b> line and <b>1020</b> feet from the <b>West</b> line				
Ground Level Elev. <b>6350</b>	Producing Formation <b>Fruitland Coal</b>	Pool <b>Basin</b>	Dedicated Acreage: <b>302.97</b> "A"	

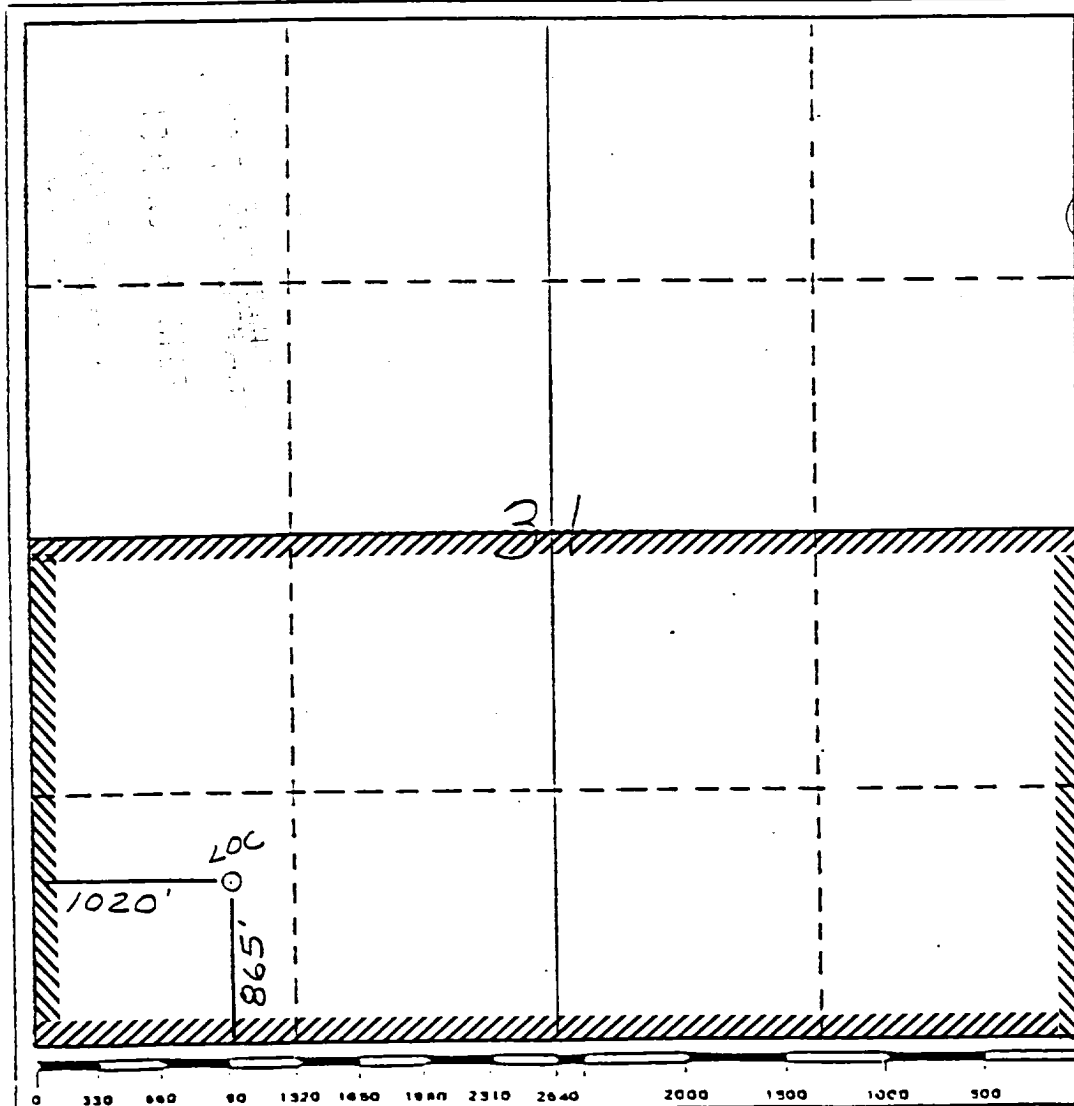
1. Outline the acreage dedicated to the subject well by colored pencil or hachure marks on the plat below.
2. If more than one lease is dedicated to the well, outline each and identify the ownership thereof (both as to work interest and royalty).
3. If more than one lease of different ownership is dedicated to the well, have the interests of all owners been consolidated by communitization, unitization, force-pooling, etc?

☐ Yes ☐ No If answer is "yes," type of consolidation \_\_\_\_\_

If answer is "no," list the owners and tract descriptions which have actually been consolidated. (Use reverse side of this form if necessary.) \_\_\_\_\_

No allowable will be assigned to the well until all interests have been consolidated (by communitization, unitization, force-pooling, or otherwise) or until a non-standard unit, eliminating such interests, has been approved by the Division.

Reissued to show moved location



CERTIFICATION

I hereby certify that the information contained herein is true and complete to the best of my knowledge and belief.

*Neale C. Edwards*  
Name

Regulatory Affairs

Position

Meridian Oil Inc.

Company

5-6-89

Date

I hereby certify that the well location shown on this plat was plotted from notes of actual surveys made by me under my supervision, and that the same is true and correct to the best of my knowledge and belief.

*Neale C. Edwards*  
Date Surveyed  
12-4-88

Registered Professional Engineer and/or Land Surveyor

Neale C. Edwards

Certificate No.

6857

Hancock  
B #714

T28N, R9W

Map 2-A

Armenia

Munoz

Canyon

Sullivan