

UNITED STATES
DEPARTMENT OF THE INTERIOR
BUREAU OF LAND MANAGEMENT

APPLICATION FOR PERMIT TO DRILL OR DEEPEN

1a. TYPE OF WORK

DRILL ☒

DEEPEN ☐

b. TYPE OF WELL

OIL WELL ☐

GAS WELL ☒

OTHER ☐

SINGLE ZONE ☒

MULTIPLE ZONE ☐

2. NAME OF OPERATOR

BHP Petroleum (Americas) Inc. 2217

3. ADDRESS AND TELEPHONE NO.

P. O. Box 977, Farmington, New Mexico, 87499, 505 - 327 - 1639

4. LOCATION OF WELL (Report location clearly and in accordance with any State requirements.)*

At surface 1175 ' FSL - 810 ' FEL

At proposed prod. zone

same

14. DISTANCE IN MILES AND DIRECTION FROM NEAREST TOWN OR POST OFFICE*

4 miles southwest of Bloomfield, New Mexico

15. DISTANCE FROM PROPOSED*

LOCATION TO NEAREST PROPERTY OR LEASE LINE, FT.
(Also to nearest drilg. unit line, if any)

145 '

18. DISTANCE FROM PROPOSED LOCATION* TO NEAREST WELL, DRILLING, COMPLETED, OR APPLIED FOR, ON THIS LEASE, FT.

200 '

16. NO. OF ACRES IN LEASE

160

19. PROPOSED DEPTH

1650 '

17. NO. OF ACRES ASSIGNED TO THIS WELL

134.43

20. ROTARY OR CABLE TOOLS

Rotary

21. ELEVATIONS (Show whether DF, RT, GR, etc.)

This action is subject to technical and

procedural review pursuant to 43 CFR 3165.3

and appeal pursuant to 43 CFR 3165.4.

5510 ' GR

22. APPROX. DATE WORK WILL START*

As soon as approved

PROPOSED CASING AND CEMENTING PROGRAM

DRILLING OPERATIONS AUTHORIZED ARE

SUBJECT TO COMPLIANCE WITH ATTACHED

GENERAL REQUIREMENTS

SIZE OF HOLE	GRADE SIZE OF CASING	WEIGHT PER FOOT	SETTING DEPTH	QUANTITY OF CEMENT
8.750 "	7.000 " - K55	20	130 '	59 cu. ft.
6.250 "	4.500 " - K55	10.5	1650 '	273.2 cu. ft.

BHP Petroleum (Americas) Inc. proposes to spud in the Nacimiento Formation. Will drill an 8 3/4 " hole to 130 feet. Run and cement surface casing with cement returns to surface. WOC 12 hours. Test casing and BOPE to 600 psig for 15 minutes. Drill a 6 1/4 " hole to 1650 ' using a fresh water mud. No abnormal pressures or poisonous gases are anticipated. Adequate weight material will be on location to control any unforeseen flows from the Farmington sands. Run logs at TD. Run and cement production casing with cement returns to surface. WOC 12 hours. Move out drilling rig and move in completion unit. Pressure test production casing to 2500 psig for 15 minutes prior to perforating. Run cased hole correlation logs. Perforate Pictured Cliffs and stimulate using a fresh water base gel or foam system.

Surface ownership is Federal (BLM).

RECEIVED
DEC 1 1995
OIL CONSERVATION
BUREAU

IN ABOVE SPACE DESCRIBE PROPOSED PROGRAM: If proposal is to deepen, give data on present productive zone and proposed new productive zone. If proposal is to drill or deepen directionally, give pertinent data on subsurface locations and measured and true vertical depths. Give blowout preventer program, if any.

SIGNED [Signature]

TITLE Operations Superintendent

DATE 11/3/95

(This space for Federal or State office use)

PERMIT NO. _____

APPROVAL DATE _____

APPROVED
AS AMENDED

Application approval does not warrant or certify that the applicant holds legal or equitable title to those rights in the subject lease which would entitle the applicant to conduct operations thereon

CONDITIONS OF APPROVAL, IF ANY:

DEC 6 1995

APPROVED BY [Signature]

TITLE _____

DISTRICT MANAGER

*See Instructions On Reverse Side

District I
PO Box 1980, Hobbs, NM 88241-1980
District II
PO Drawer DD, Artesia, NM 88211-0719
District III
1000 Rio Brazos Rd., Aztec, NM 87410
District IV
PO Box 2088, Santa Fe, NM 87504-2088

State of New Mexico
Energy, Minerals & Natural Resources Department

Form C-102
Revised February 21, 1994

OIL CONSERVATION DIVISION
PO Box 2088
Santa Fe, NM 87504-2088

Submit to Appropriate District Office
State Lease - 4 Copies
Fee Lease - 3 Copies

☐ AMENDED REPORT

WELL LOCATION AND ACREAGE DEDICATION PLAT

1 API Number 30-045-29317		2 Pool Code 79680		3 Pool Name West Kutz Pictured Cliffs		
4 Property Code 2038		5 Property Name GALLEGOS CANYON UNIT			6 Well Number 544	
7 OGRID No. 2217		8 Operator Name BHP PETROLEUM (AMERICAS) INC.			9 Elevation 5511	

10 Surface Location

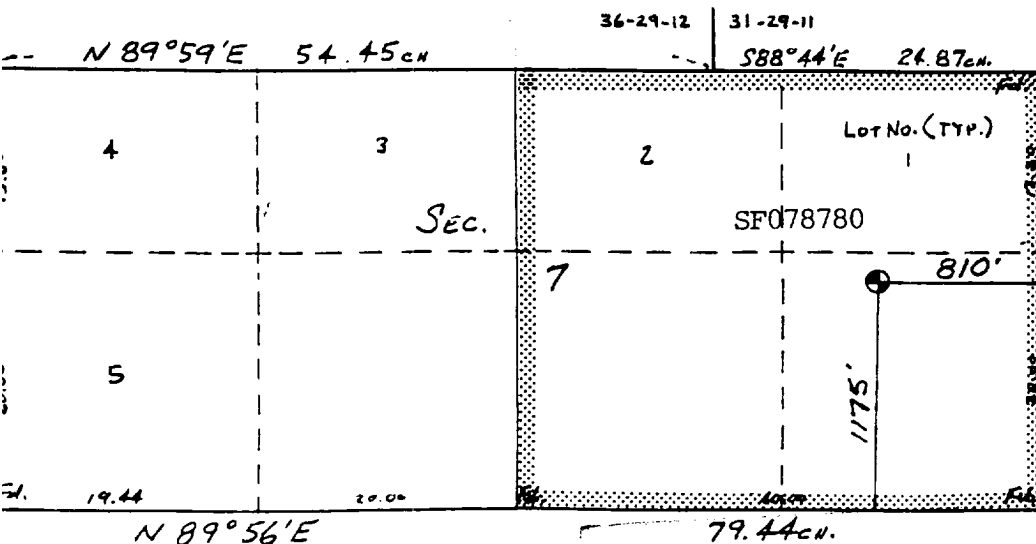
UL or lot no.	Section	Township	Range	Lot Idn	Feet from the	North/South line	Feet from the	East/West line	County
P	7	28 N	11 W		1175	South	810	East	San Juan

11 Bottom Hole Location If Different From Surface

UL or lot no.	Section	Township	Range	Lot Idn	Feet from the	North/South line	Feet from the	East/West line	County

12 Dedicated Acres 134.43	13 Joint or Infill	14 Consolidation Code U	15 Order No.
------------------------------	--------------------	----------------------------	--------------

NO ALLOWABLE WILL BE ASSIGNED TO THIS COMPLETION UNTIL ALL INTERESTS HAVE BEEN CONSOLIDATED
OR A NON-STANDARD UNIT HAS BEEN APPROVED BY THE DIVISION



17 OPERATOR CERTIFICATION

I hereby certify that the information contained herein is true and complete to the best of my knowledge and belief

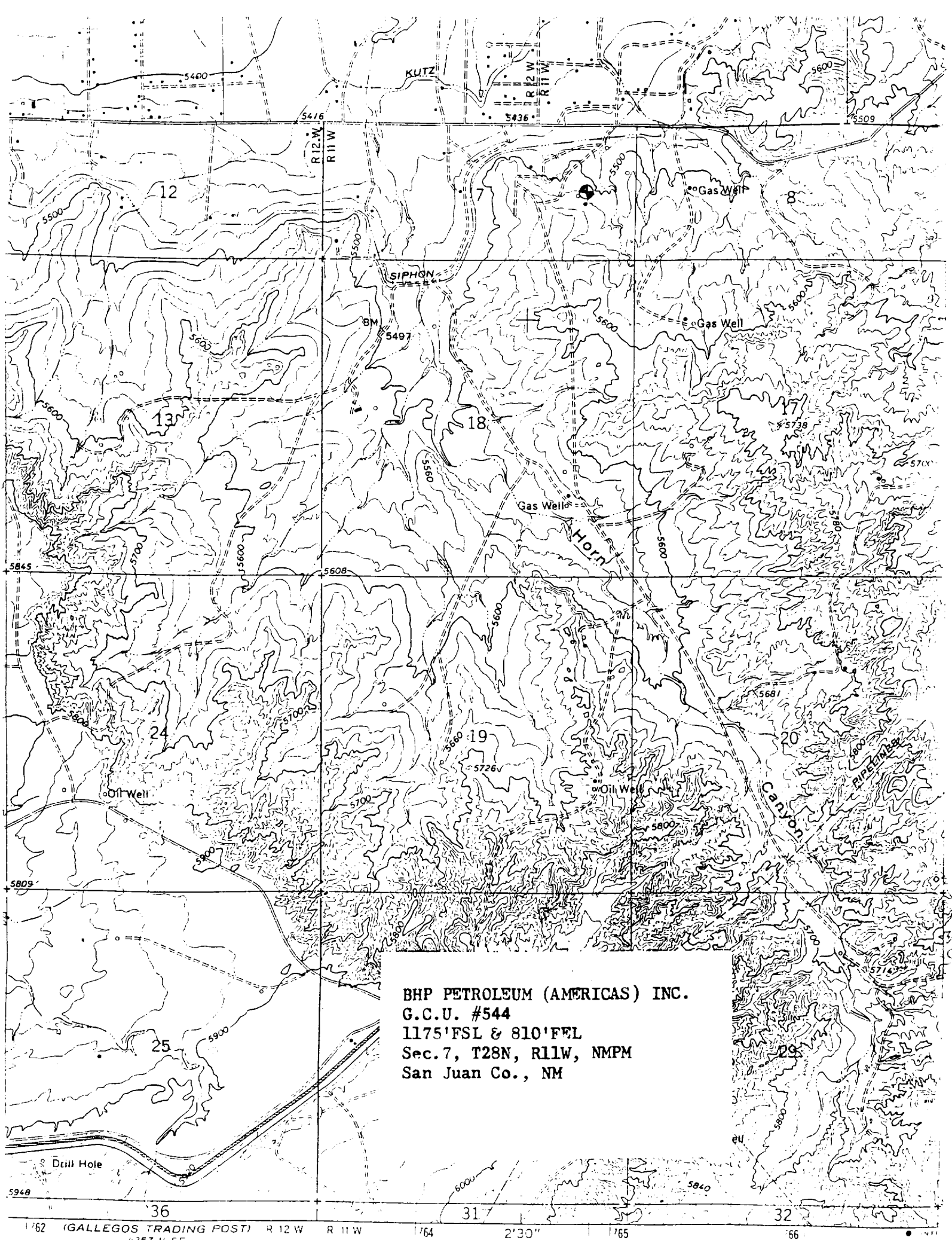
Signature: *J. C. Harris*
Printed Name: J. C. Harris
Title: Operations Superintendent
Date: 11/3/95

18 SURVEYOR CERTIFICATION

I hereby certify that the well location shown on this plat was plotted from field notes of actual surveys made by me or under my supervision, and that the same is true and correct to the best of my belief.

Date of Survey: 15 Sep 1995
Signature and Seal of Professional Surveyor: *William J. Mahnke II*
Certificate Number: 8466

RECEIVED
DEC 1 1995
OIL CONSERVATION DIV.
DIST. 2



BHP PETROLEUM (AMERICAS) INC.
G.C.U. #544
1175'FSL & 810'FEL
Sec.7, T28N, R11W, NMPM
San Juan Co., NM

Drill Hole

(GALLEGO TRADING POST) R 12 W R 11 W

4357 11 SE

2'30"