



STATE OF NEW MEXICO
ENERGY, MINERALS AND NATURAL RESOURCES DEPARTMENT

OIL CONSERVATION DIVISION

2040 S. PACHECO
SANTA FE, NEW MEXICO 87505
(505) 827-7131

August 13, 1997

RECEIVED
AUG 18 1997

OIL CON. DIV.
DIST. 3

Burlington Resources Oil & Gas Company
P. O. Box 4289
Farmington, New Mexico 87499
Attention: Peggy Bradfield

Administrative Order NSL-3852

Dear Ms. Bradfield:

Reference is made to your application dated July 24, 1997 for an unorthodox gas well location for the proposed Hancock "A" Well No. 1-A to be drilled 755 feet from the South line and 1695 feet from the East line (Lot 3/Unit O) of Section 35, Township 28 North, Range 9 West, NMPM, Blanco-Mesaverde Pool, San Juan County, New Mexico.

Blanco-Mesaverde Pool gas production from said well is to be dedicated to a pre-existing 320.15-acre standard gas spacing and proration unit ("GPU") comprising Lots 3 and 4, the NE/4, and the N/2 SE/4 (E/2 equivalent) of said Section 35. Said 320.15-acre GPU had previously been dedicated to the El Paso Natural Gas Company Hancock "A" Well No. 1 (API No. 30-045-06987), located at a standard gas well location 1850 feet from the North line and 1090 feet from the East line (Unit H) of said Section 35. Said Hancock "A" Well No. 1 produced gas from the Blanco-Mesaverde interval from 1953 to 1976. In 1985 this well was plugged and abandoned.

Pursuant to Rule 2(c) of the "General Rules for the Prorated Gas Pools of New Mexico/Special Rules and Regulations for the Blanco-Mesaverde Pool", as promulgated by Division Order No. R-8170, as amended, the aforementioned unorthodox gas well location is hereby approved.

Sincerely,

William J. LeMay
Director

WJL/MES/kv

cc: Oil Conservation Division - Aztec
U. S. Bureau of Land Management - Farmington

BURLINGTON RESOURCES

SAN JUAN DIVISION

July 24, 1997

Sent Federal Express

Mr. William LeMay
New Mexico Oil Conservation Division
2040 South Pacheco
Santa Fe, New Mexico 87505

RECEIVED
JUL 25 1997

OIL CON. DIV.
DIST. 3

Re: Hancock A #1A
755'FSL, 1695'FEL, Section 35, T-28-N, R-9-W, San Juan County
API # 30-045-not yet assigned

Dear Mr. LeMay:

Burlington Resources is applying for administrative approval of a non-standard location for the above location in the Mesa Verde formation. This application for the referenced location is due to terrain, the presence of archaeology and at the request of the Bureau of Land Management to minimize new surface disturbance.

The following attachments are for your review:

1. Application for Permit to Drill.
2. Completed C-102 at referenced location.
3. Offset operators/owners plat, and certification of notification
4. 7.5 minute topographic map showing the orthodox windows, and enlargement of the map to define topographic features.

We appreciate your earliest consideration of this application.

Sincerely,



Peggy Bradfield
Regulatory/Compliance Administrator

xc: NMOCD - Aztec District Office
Bureau of Land Management - FDO

WAIVER


_____ hereby waives objection to Burlington Resources' application for a non-standard location for their Hancock A #1A as proposed above.

By: _____ Date: _____

xc: Amoco Production
Conoco Inc.
Four Star Oil & Gas
Phillips Petroleum

UNITED STATES
DEPARTMENT OF THE INTERIOR
BUREAU OF LAND MANAGEMENT

APPLICATION FOR PERMIT TO DRILL, DEEPEN, OR PLUG BACK

1a. Type of Work DRILL	5. Lease Number NM-04209 Unit Reporting Number
1b. Type of Well GAS	6. If Indian, All. or Tribe
2. Operator <i>BURLINGTON</i> <i>RESOURCES</i> Oil & Gas Company	7. Unit Agreement Name
3. Address & Phone No. of Operator PO Box 4289, Farmington, NM 87499 (505) 326-9700	8. Farm or Lease Name Hancock A 9. Well Number 1A
4. Location of Well 755' FSL, 1695' FEL Latitude 36° 36.8, Longitude 107° 45.3	10. Field, Pool, Wildcat Blanco Mesa Verde 11. Sec., Twn, Rge, Mer. (NMPM) Sec 35, T-28-N, R-9-W API # 30-045-
14. Distance in Miles from Nearest Town 10 miles to Blanco	12. County San Juan 13. State NM
15. Distance from Proposed Location to Nearest Property or Lease Line 755	17. Acres Assigned to Well 320.15 E/2
16. Acres in Lease	18. Distance from Proposed Location to Nearest Well, Drlg, Compl, or Applied for on this Lease 300'
19. Proposed Depth 4792	20. Rotary or Cable Tools Rotary
21. Elevations (DF, FT, GR, Etc.) 5980' GR	22. Approx. Date Work will Start
23. Proposed Casing and Cementing Program See Operations Plan attached	
24. Authorized by:  Regulatory/Compliance Administrator	Date <u>7-11-97</u>

PERMIT NO. _____ APPROVAL DATE _____
APPROVED BY _____ TITLE _____ DATE _____

Archaeological Report submitted
Threatened and Endangered Species Report submitted
NOTE: This format is issued in lieu of U.S. BLM Form 3160-3

District I
PO Box 1988, Hobbs, NM 88241-1988
District II
PO Drawer 00, Artesa, NM 88211-0719
District III
1000 Rio Bravo Rd., Aztec, NM 87410
District IV
PO Box 2088, Santa Fe, NM 87504-2088

State of New Mexico
Energy, Minerals & Natural Resources Department

OIL CONSERVATION DIVISION
PO Box 2088
Santa Fe, NM 87504-2088

Form C
Revised February 21,
Instructions on
Submit to Appropriate District C
State Lease - 4 C
Fee Lease - 3 C

☐ AMENDED REP

WELL LOCATION AND ACREAGE DEDICATION PLAT

API Number 30-045-	Pool Code 72319	Pool Name Blanco Mesaverde
Property Code 7077	Property Name Hancock A	Well Number 1A
OGRID No. 14538	Operator Name BURLINGTON RESOURCES OIL & GAS COMPANY	Elevation 5980'

10 Surface Location

UL or lot no.	Section	Township	Range	Lot Idn	Feet from the	North/South line	Feet from the	East/West line	County
0	35	28-N	9-W		755	South	1695	East	S.J.

11 Bottom Hole Location if Different From Surface

UL or lot no.	Section	Township	Range	Lot Idn	Feet from the	North/South line	Feet from the	East/West line	County

12 Dedication Acres: MV-E 320.15
13 Joint or infill
14 Consolidation Code
15 Order No.

NO ALLOWABLE WILL BE ASSIGNED TO THIS COMPLETION UNTIL ALL INTERESTS HAVE BEEN CONSOLIDATED OR A NON-STANDARD UNIT HAS BEEN APPROVED BY THE DIVISION

16	5280.00'				17 OPERATOR CERTIFICATION	
				I hereby certify that the information contained herein is true and complete to the best of my knowledge and belief.		
				Signature: <u>Peggy Bradfield</u>		
				Printed Name: <u>Peggy Bradfield</u>		
				Title: <u>Regulatory Administrator</u>		
				Date: <u>7-11-97</u>		
				18 SURVEYOR CERTIFICATION		
				I hereby certify that the well location shown on this plat was plotted from field notes of actual surveys made or under my supervision, and that the same is true and correct to the best of my belief.		
				Date of Survey: <u>6/09/97</u>		
				Signature and Seal of Professional Surveyor: <u>NEALE C. EDWARDS</u>		
				Certification Number: <u>6857</u>		

OPERATIONS PLAN

Well Name: Hancock A #1A
Location: 755' FSL, 1695' FEL Section 35, T-28-N, R-9-W
Rio Arriba County, New Mexico
Latitude 36° 36.8, Longitude 107° 45.3
Formation: Blanco Mesa Verde
Elevation: 5980' GL

<u>Formation Tops:</u>	<u>Top</u>	<u>Bottom</u>	<u>Contents</u>
Surface	San Jose	996'	aquifer
Ojo Alamo	996'	1866'	aquifer
Fruitland	1866'	2128'	
Pictured Cliffs	2128'	2218'	gas
Lewis	2218'	3028'	gas
Intermediate TD	2318'		
Mesa Verde	3028'	5290'	gas
Chacra	3088'	3778'	gas
Massive Cliff House	3778'	3793'	gas
Menefee	3793'	4392'	gas
Massive Point Lookout	4392'		gas
Total Depth	4792'		

Logging Program:

Cased hole logging - Gamma Ray Neutron
Coring/DST - none

Mud Program:

<u>Interval</u>	<u>Type</u>	<u>Weight</u>	<u>Vis.</u>	<u>Fluid Loss</u>
0- 200'	Spud	8.4-9.0	40-50	no control
200-2318'	LSND	8.4-9.0	30-60	no control
2318-4792'	Gas/Mist	n/a	n/a	n/a

Pit levels will be visually monitored to detect gain or loss of fluid control.

Casing Program (as listed, the equivalent, or better):

<u>Hole Size</u>	<u>Depth Interval</u>	<u>Csq. Size</u>	<u>Wt.</u>	<u>Grade</u>
12 1/4"	0' - 200'	9 5/8"	32.3#	H-40
8 3/4"	0' - 2318'	7"	20.0#	J-55
6 1/4"	2168' - 4792'	4 1/2"	10.5#	J-55

Tubing Program:

0' - 4792' 2 3/8" 4.7# J-55

BOP Specifications, Wellhead and Tests:

Surface to Intermediate TD -

11" 2000 psi minimum double gate BOP stack (Reference Figure #1).
After nipple-up prior to drilling out surface casing, rams and casing will be tested to 600 psi for 30 minutes.

BOP Specifications, Wellhead and Tests (cont'd):

Intermediate TD to Total Depth -

11" 2000 psi minimum double gate BOP stack (Reference Figure #1).
After nipple-up prior to drilling out intermediate casing, rams
and casing will be tested to 1500 psi for 30 minutes.

Surface to Total Depth -

2" nominal, 2000 psi minimum choke manifold (Reference Figure #3).

Completion Operations -

7 1/16" 2000 psi double gate BOP stack (Reference Figure #2).
After nipple-up prior to completion, pipe rams, casing and liner
top will be tested to 2000 psi for 15 minutes.

Wellhead -

9 5/8" x 7" x 2 3/8" x 2000 psi tree assembly.

General -

- Pipe rams will be actuated once each day and blind rams will be actuated once each trip to test proper functioning.
- An upper kelly cock valve with handle available and drill string valves to fit each drill string will be available on the rig floors at all times.
- BOP pit level drill will be conducted weekly for each drill crew.
- All BOP tests & drills will be recorded in daily drilling reports.
- Blind and pipe rams will be equipped with extension hand wheels.

Cementing:

9 5/8" surface casing - cement with 163 sx Class "B" cement with 1/4# flocele/sx and 3% calcium chloride (188 cu.ft. of slurry, 200% excess to circulate to surface). WOC 12 hrs. Test casing to 600 psi for 30 minutes.

Saw tooth guide shoe on bottom. Bowspring centralizers will be run in accordance with Onshore Order #2.

7" intermediate casing -

Lead w/174 sx Class "B" w/3% sodium metasilicate, 5# gilsonite/sx and 1/2# flocele/sx. Tail w/90 sx 50/50 Class "B" Poz w/2% calcium chloride, (610 cu.ft. of slurry, 75% excess to circulate to surface.) WOC minimum of 12 hours before drilling out intermediate casing. If cement does not circulate to surface, a CBL will be run to determine TOC. Test casing to 1500 psi for 30 minutes.

Cement nose guide shoe on bottom with float collar spaced on top of shoe joint. Bowspring centralizers spaced every other joint off bottom, to the base of the Ojo Alamo at 1866'. Two turbolating centralizers at the base of the Ojo Alamo at 1866'. Bowspring centralizers spaced every fourth joint from the base of the Ojo Alamo to the base of the surface casing.

4 1/2" Production Liner -

Cement to circulate liner top. Lead with 150 sx 65/35 Class "B" poz w/6% gel, 5# gilsonite/sx and 1/4# flocele/sx. Tail with 135 sx 50/50 Class "B" Poz w/1/4# flocele/sx, 5# gilsonite/sx and 0.3% fluid loss additive (471 cu.ft., 75% excess to circulate liner top). WOC a minimum of 18 hrs prior to completing.

Cement nose guide shoe on bottom with float collar spaced on top of shoe joint. The liner hanger will have a rubber packoff.

- If hole conditions permit, an adequate water spacer will be pumped ahead of each cement job to prevent cement/ mud contamination or cement hydration.
- The pipe will be rotated and/or reciprocated, if hole conditions permit.

Special Drilling Operations (Gas/Mist Drilling):


The following equipment will be operational while gas/mist drilling:

- An anchored blooie line will be utilized to discharge all cuttings and circulating medium to the blow pit a minimum of 100' from the wellhead.
- The blooie line will be equipped with an automatic igniter or pilot light.
- Compressors will be located a minimum of 100' from the wellhead in the opposite direction from the blooie line.
- Engines will have spark arresters or water cooled exhaust.
- The rotating head will be properly lubricated and maintained.
- A float valve will be utilized above the bit.
- Mud circulating equipment, water, and mud materials will be sufficient to maintain control of the well.

Additional Information:

- The Mesa Verde formation will be completed.
- No abnormal temperatures or hazards are anticipated.
- Anticipated pore pressures are as follows:

Fruitland Coal	800 psi
Pictured Cliffs	800 psi
Mesa Verde	700 psi
- Sufficient LCM will be added to the mud system to maintain well control, if lost circulation is encountered below the top of the Pictured Cliffs.
- The east half is dedicated to the Mesa Verde.
- This gas is dedicated.



Drilling Engineer

7/14/97

Date


BURLINGTON RESOURCES

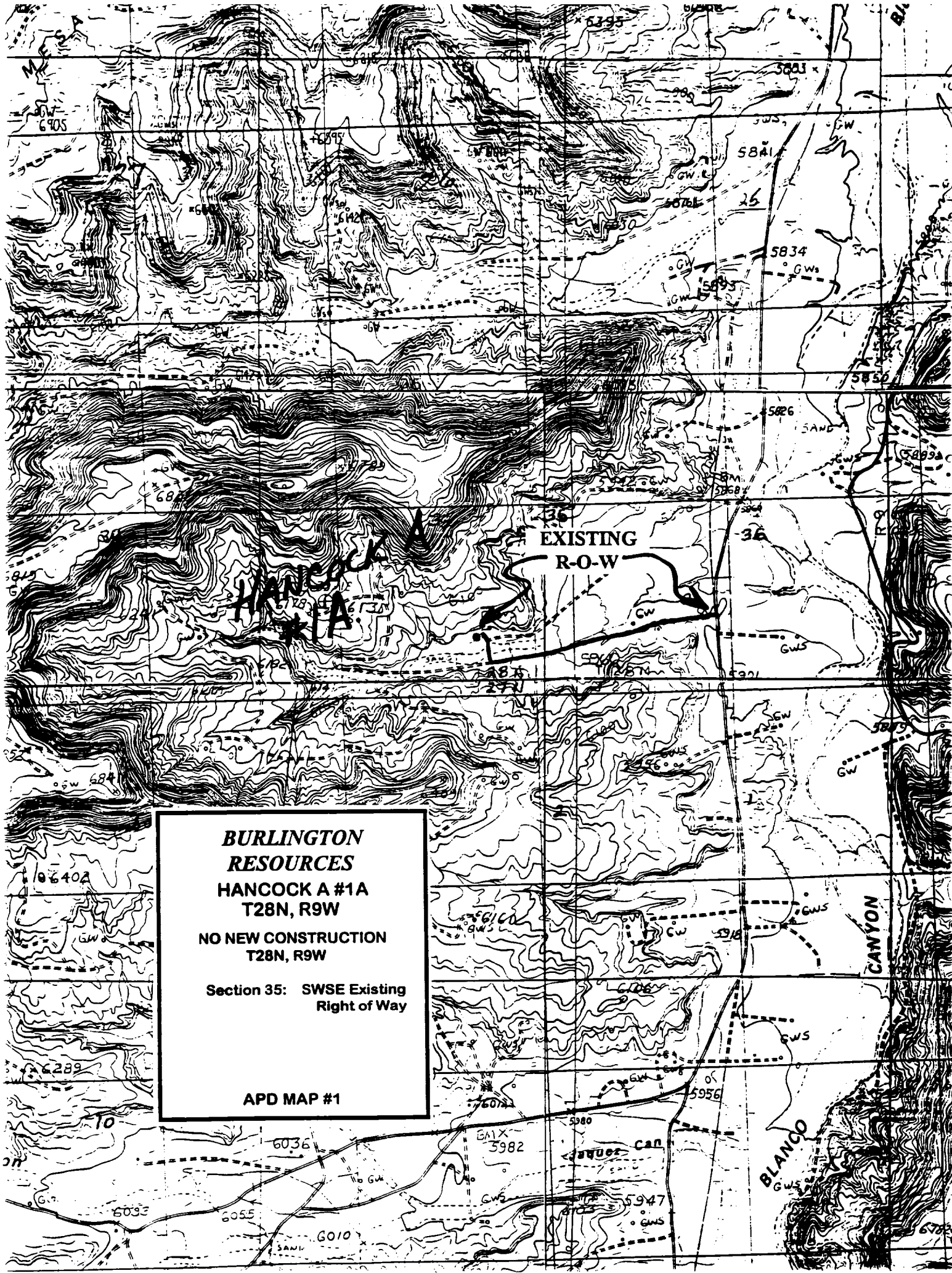
Hancock A #1A

Multi-Point Surface Use Plan

1. Existing Roads - Refer to Map No. 1. Existing roads used to access the proposed location will be properly maintained for the duration of the project. Bureau of Land Management right-of-way has been applied for as shown on Map No. 1.
2. Planned Access Road - Refer to Map No. 1 - None required.
3. Location of Existing Wells - Refer to Map No. 1A.
4. Location of Existing and/or Proposed Facilities if Well is Productive -
 - a. On the Well Pad - Refer to Plat No. 1, anticipated production facilities plat.
 - b. Off the Well Pad - Anticipated pipeline facilities as shown on the attached plat from El Paso Field Service.
5. Location and Type of Water Supply - Water will be hauled by truck for the proposed project and will be obtained from Five Mile Water Hole located in SW/4 Section 26, T-29-N, R-9-W, New Mexico.
6. Source of Construction Materials - If construction materials are required for the proposed project, such materials will be obtained from a commercial quarry.
7. Methods of Handling Waste Materials - All garbage and trash materials will be removed from the site for proper disposal. A portable toilet will be provided for human waste and serviced in a proper manner. If liquids are left in the reserve pit after completion of the project, the pit will be fenced until the liquids have had adequate time to dry. The location clean-up will not take place until such time as the reserve pit can be properly covered over to prevent run-off from carrying waste materials into the watershed. Reserve pits will be lined as needed with either 12 mil bio-degradable plastic liner or a bentonite liner. All earthen pits will be so constructed as to prevent leakage from occurring; no earthen pit will be located on natural drainage. Generation of hazardous waste is not anticipated. Federal regulations will be adhered to regarding handling and disposal of such waste if so generated.
8. Ancillary Facilities - None anticipated.
9. Wellsite Layout - Refer to the location diagram and to the wellsite cut and fill diagram (Figure No. 4). The blow pit will be constructed with a 2'/160' grade to allow positive drainage to the reserve pit and prevent standing liquids in the blow pit.

- -
10. Plans for Restoration of the Surface - After completion of the proposed project, the location will be cleaned and leveled. The location will be left in such a condition that will enable reseeding operations to be carried out. Seed mixture as designated by the responsible government agency will be used. The reseeding operations will be performed during the time period set forth by the responsible government agency. The permanent location facilities will be painted as designated by the responsible government agency.
 11. Surface Ownership - Bureau of Land Management
 12. Other Information - Environmental stipulations as outlined by the responsible government agency will be adhered to. Refer to the archaeological report for a description of the topography, flora, fauna, soil characteristics, dwellings, historical and cultural sites.
 13. Operator's Representative and Certification - Burlington Resources Oil & Gas Company Regional Drilling Manager, Post Office Box 4289, Farmington, NM 87499, telephone (505) 326-9700. I hereby certify that I, or persons under my direct supervision, have inspected the proposed drill site and access route; that I am familiar with the conditions which presently exist; that the statements made in this plan, are to the best of my knowledge, true and correct; and that the work associated with the operations proposed herein will be performed by Burlington Resources Oil and Gas Company and its contractors and subcontractors in conformity with this plan and the terms and conditions under which it is approved.

 7-11-97
Regulatory/Compliance Administrator Date



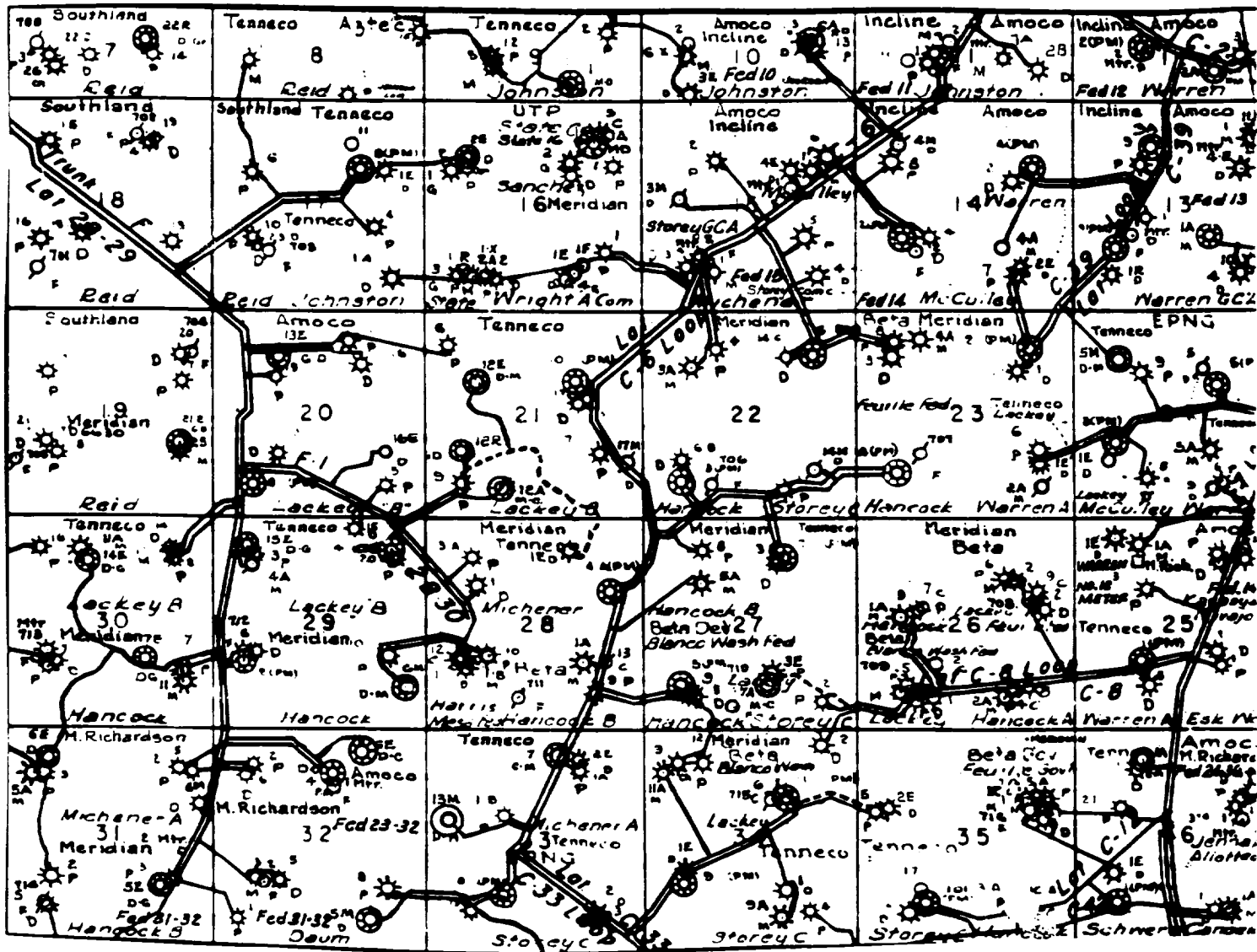
**BURLINGTON
RESOURCES**

**HANCOCK A #1A
T28N, R9W**

**NO NEW CONSTRUCTION
T28N, R9W**

**Section 35: SWSE Existing
Right of Way**

APD MAP #1

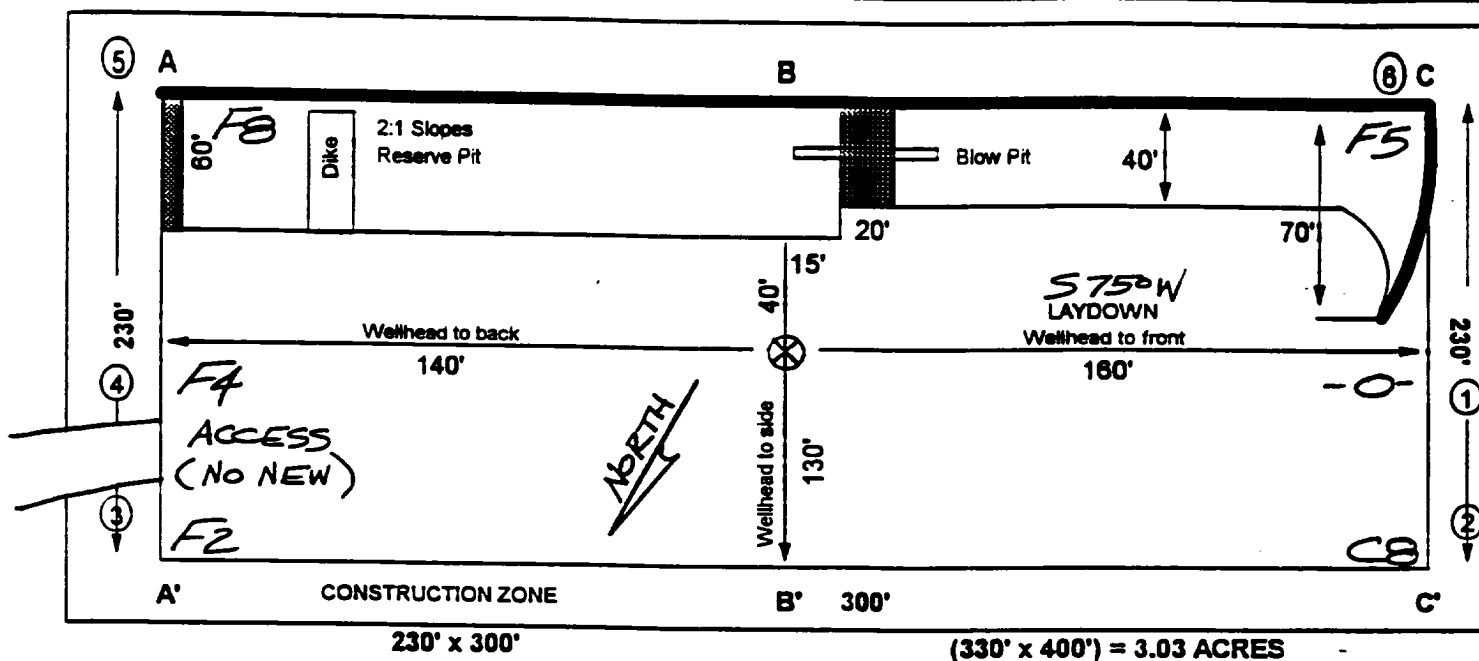


MERIDIAN OIL INC.
 Pipeline Map
 T-28-N, R-09-W
 San Juan County, New Mexico
 Hancock A #1A
 Map 1A

BURLINGTON RESOURCES

PLAT #1

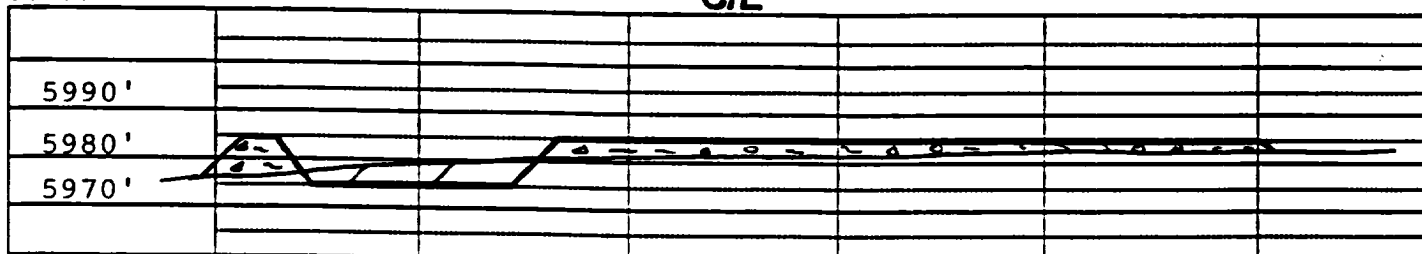
NAME: Hancock A #1A
 FOOTAGE: 755' FSL, 1695' FEL,
 SEC 35 TWN 28N N.R. 9W W NMPM
 CO: San Juan ST: New Mexico
 ELEVATION: 5980' DATE: 6/9/97



Reserve Pit Dike: to be 8' above Deep side (overflow - 3' wide and 1' above shallow side).
 Blow Pit: overflow pipe halfway between top and bottom and to extend over plastic liner and into blow pit.

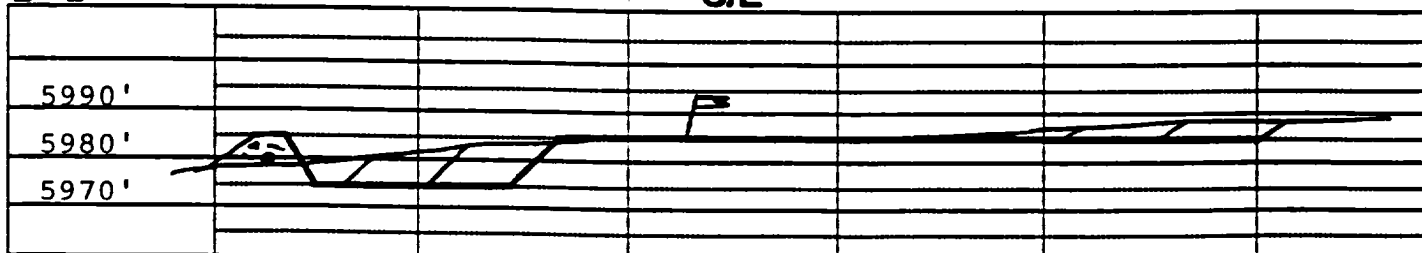
A - A'

C/L



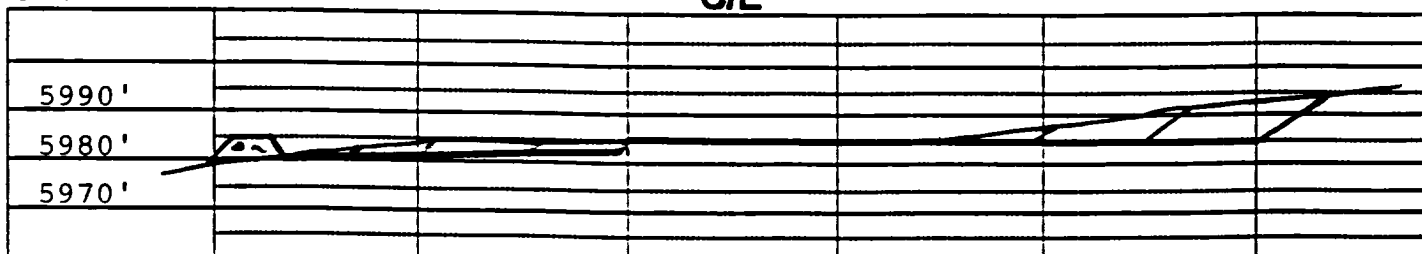
B - B'

C/L



C - C'

C/L



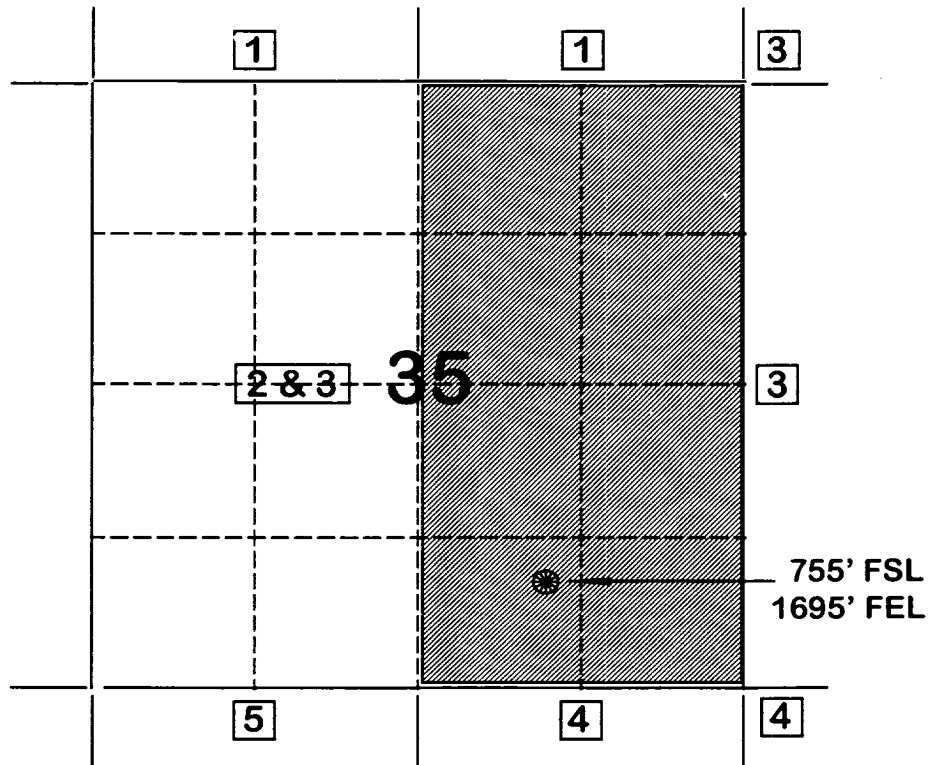
Note: Contractor should call One-Call for location of any marked or unmarked buried pipelines or cable on well pad and/or access road at least two (2) working days prior to construction.

BURLINGTON RESOURCES OIL AND GAS COMPANY

**Hancock A #1A
OFFSET OPERATOR \ OWNER PLAT
Nonstandard Location**

Mesaverde Formation Well

Township 28 North, Range 9 West



1) Burlington Resources Oil and Gas Company

2) Amoco Production Company

Attn: Bruce Zimney

P.O. Box 800

Denver, CO 80201

3) Conoco Inc.

10 Desta Drive, Suite 100W

Midland, TX 79705-4500

4) Four Star Oil & Gas Company

Attn: Gary Cox

P.O. Box 2100

Denver, CO 80201

5) Phillips Petroleum Company

Attn: Pat Noah

5525 Hwy 64, NBU 3004

Farmington, NM 87401

Re: Hancock A #1A
755'FSL, 1695'FEL, Section 35, T-28-N, R-9-W, San Juan County
API # 30-045-not yet assigned

I hereby certify that the following offset operators/owners have been mailed notification of our application for non-standard location to drill the referenced well.

Amoco Production
Att: Bruce Zimney
PO Box 800
Denver, CO 80201

Conoco Inc.
10 Desta Drive, Suite 100W
Midland, TX 79705-4500

Four Star Oil & Gas Company
Att: Gary Cox
PO Box 2100
Denver, CO 80201

Phillips Petroleum Co
Att: Pat Noah
5525 Highway 64, NBU 3004
Farmington, NM 87401

 7/24/97
Peggy Bradfield
Regulatory/Compliance Administrator

