

UNITED STATES  
DEPARTMENT OF THE INTERIOR  
BUREAU OF LAND MANAGEMENT

APPLICATION FOR PERMIT TO DRILL OR REENTER

FORM APPROVED  
OMB No. 1004-0136  
Expires November 30, 2000

5. Lease Serial No.  
**SF-077383**

6. If Indian, Allottee or Tribe Name

1a. Type of Work: ☒ DRILL ☐ REENTER

b. Type of Well: ☐ Oil Well ☒ Gas Well ☐ Other ☒ Single Zone ☐ Multiple Zone

7. If Unit or CA Agreement, Name and No.

8. Lease Name and Well No.  
**Kutz Government #3J**

2. Name of Operator  
**Breck Operating Company**

9. API Well No.  
**30-045-30186**

3A. Address  
**c/o Walsh Engineering, 7415 E. Main, Farmington, NM 87402**

3b. Phone No. (include area code)  
**(505) 327-4892**

10. Field and Pool, or Exploratory  
**Fulcher Kutz Pictured Cliffs**

4. Location of Well (Report location clearly and in accordance with any State requirements. \*)

At surface **1850' FSL and 790' FWL**

At proposed prod. Zone

11. Sec., T., R., M., or Blk. and Survey or Area  
**L Sec. 27, T28N, R10W**

14. Distance in miles and direction from nearest town or post office\*  
**6 miles southeast of Bloomfield, NM**

12. County or Parish  
**San Juan**

13. State  
**NM**

15. Distance from proposed\* location to nearest property or lease line, ft. (Also to nearest drig. unit line, if any)  
**790'**

16. No. of Acres in lease  
**160**

17. Spacing Unit dedicated to this well  
**160 acres SW/4**

18. Distance from proposed\* location to nearest well, drilling, completed, applied for, on this lease, ft.  
**1100'**

19. Proposed Depth  
**2085'**

20. BLM/BIA Bond No. on file

21. Elevations (Show whether DF, KDB, RT, GL, etc.)  
**5893' GL**

22. Approximate date work will start\*  
**July 15, 2000**

23. Estimated duration  
**1 week**

24. Attachments

The following, completed in accordance with the requirements of Onshore Oil and Gas Order No. 1, shall be attached to this form:

- |   |   |
|---|---|
| 1. Well plat certified by a registered surveyor.  | 4. Bond to cover the operations unless covered by an existing bond on file (see Item 20 above).   |
| 2. A Drilling Plan.   | 5. Operator certification.  |
| 3. A Surface Use Plan (if the location is on National Forest System Lands, the SUPO shall be filed with the appropriate Forest Service Office). | 6. Such other site specific information and/or plans as may be required by the authorized office. |

25. Signature <i>Paul C. Thompson</i>	Name (Printed/Typed) <b>Paul C. Thompson, P.E.</b>	Date <b>6/12/00</b>
Title		

Agent	
Approved by (Signature) <i>/s/ Jim Lovato</i>	Name (Printed/Typed) <b>Jim Lovato</b>
Title	
Office	
Date <b>JUL 18 2000</b>	

Application approval does not warrant or certify that the applicant holds legal or equitable title to those rights in the subject lease which would entitle the applicant to conduct operations thereon.

Conditions of approval, if any, are attached.

Title 18 U.S.C. Section 1001 and Title 43 U.S.C. Section 1212, make it a crime for any person knowingly and willfully to make to any department or agency of the United States any false, fictitious or fraudulent statements or representations as to any matter within its jurisdiction.

\*(Instructions on reverse)

THIS APPLICATION IS FOR A PERMIT TO DRILL OR REENTER A WELL ON LAND OWNED BY THE UNITED STATES DEPARTMENT OF THE INTERIOR BUREAU OF LAND MANAGEMENT

*SH*

District I  
PO Box 1980, Hobbs, NM 88241-1980

District II  
PO Drawer 00, Artesia, NM 88211-0719

District III  
1000 Rio Brazos Rd., Aztec, NM 87410

District IV  
PO Box 2088, Santa Fe, NM 87504-2088

State of New Mexico  
Energy, Minerals & Natural Resources Department

OIL CONSERVATION DIVISION  
PO Box 2088  
Santa Fe, NM 87504-2088

Form C-102  
Revised February 21, 1994  
Instructions on back  
Submit to Appropriate District Office  
State Lease - 4 Copies  
Fee Lease - 3 Copies

☒ AMENDED REPORT

WELL LOCATION AND ACREAGE DEDICATION PLAT

*API Number 30-645-30180		*Pool Code 77200	*Pool Name FULCHER KUTZ PICTURED CLIFFS	
*Property Code 2223	*Property Name KUTZ GOVERNMENT		*Well Number 3J	
*CGRID No. 002799	*Operator Name BRECK OPERATING COMPANY		*Elevation 5893'	

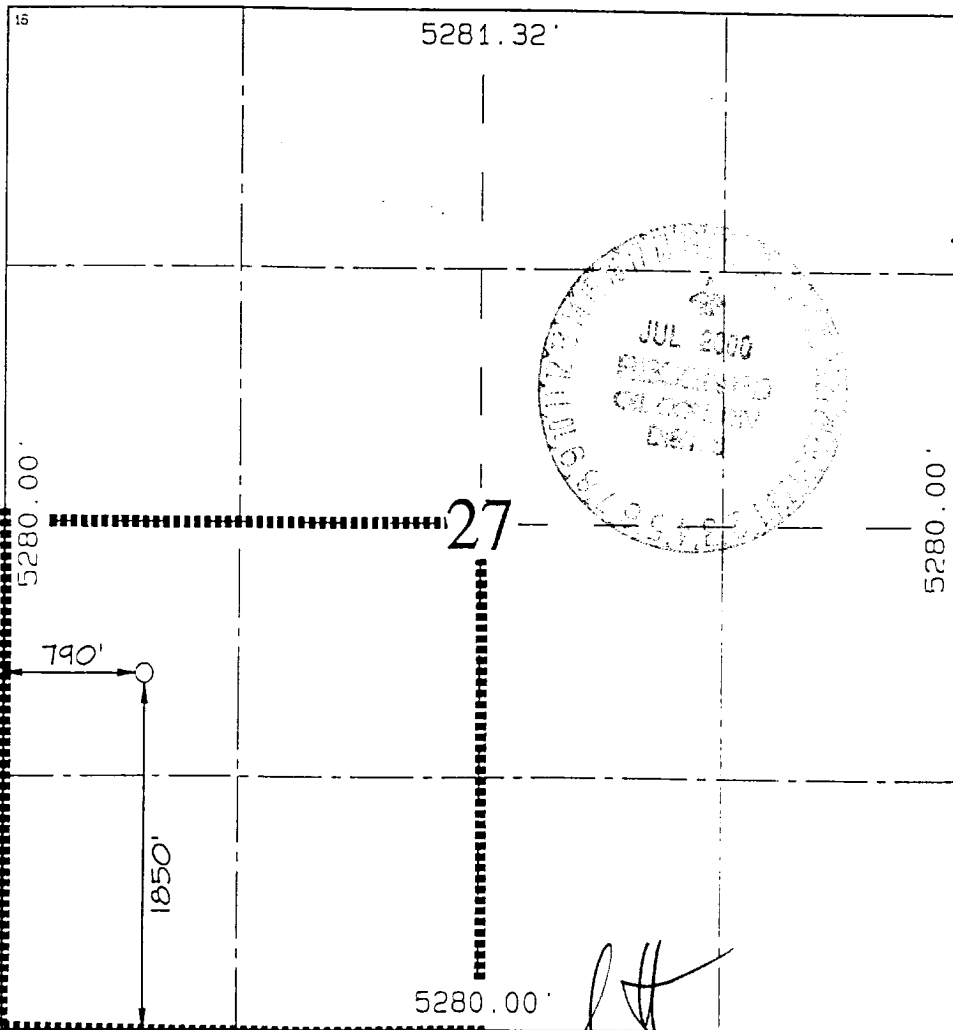
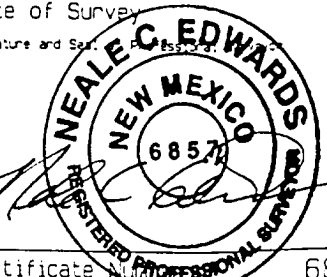
<sup>10</sup> Surface Location

UL or lot no.	Section	Township	Range	Lot Idn	Feet from the	North/South line	Feet from the	East/West line	County
L	27	28N	10W		1850	SOUTH	790	WEST	SAN JUAN

<sup>11</sup> Bottom Hole Location If Different From Surface

UL or lot no.	Section	Township	Range	Lot Idn	Feet from the	North/South line	Feet from the	East/West line	County
<sup>12</sup> Dedicated Acres 160		<sup>13</sup> Joint or Infill Y		<sup>14</sup> Consolidation Code		<sup>15</sup> Order No.			

NO ALLOWABLE WILL BE ASSIGNED TO THIS COMPLETION UNTIL ALL INTERESTS HAVE BEEN CONSOLIDATED  
OR A NON-STANDARD UNIT HAS BEEN APPROVED BY THE DIVISION

	<p><sup>17</sup> OPERATOR CERTIFICATION</p> <p>I hereby certify that the information contained herein is true and complete to the best of my knowledge and belief.</p> <p><i>Paul C. Thompson</i> Signature Paul C. Thompson Printed Name Agent Title 6/12/00 Date</p>
	<p><sup>18</sup> SURVEYOR CERTIFICATION</p> <p>I hereby certify that the well location shown on this plat was plotted from field notes of actual surveys made by me or under my supervision, and that the same is true and correct to the best of my belief.</p> <p>JUNE 5, 2000 Date of Survey <i>Neale C. Edwards</i> Signature and Seal  Certificate No. 6857</p>

C. Cont.

The blind rams will be hydraulically activated and checked for operational readiness each time pipe is pulled out of the hole. All checks of the BOP stack and equipment will be noted on the daily drilling report. The BOP equipment will include a kelly cock, floor safety valve, and choke manifold all rated to 2000 psi.

#### IV. Materials

##### A. Casing Program:

Hole Size	Depth	Casing Size	Wt. & Grade
8-3/4"	120'	7"	20# K-55
6-1/4"	2085'	4-1/2"	10.5# K-55

##### B. Float Equipment:

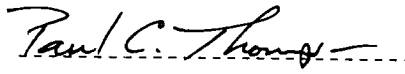
a) Surface Casing: None

b) Production Casing: 4-1/2" cement guide shoe and self fill insert float collar. Place float one joint above shoe. Five centralizers spaced every other joint above shoe and five turbolizers every other joint from the top of the well.

#### V. Cementing:

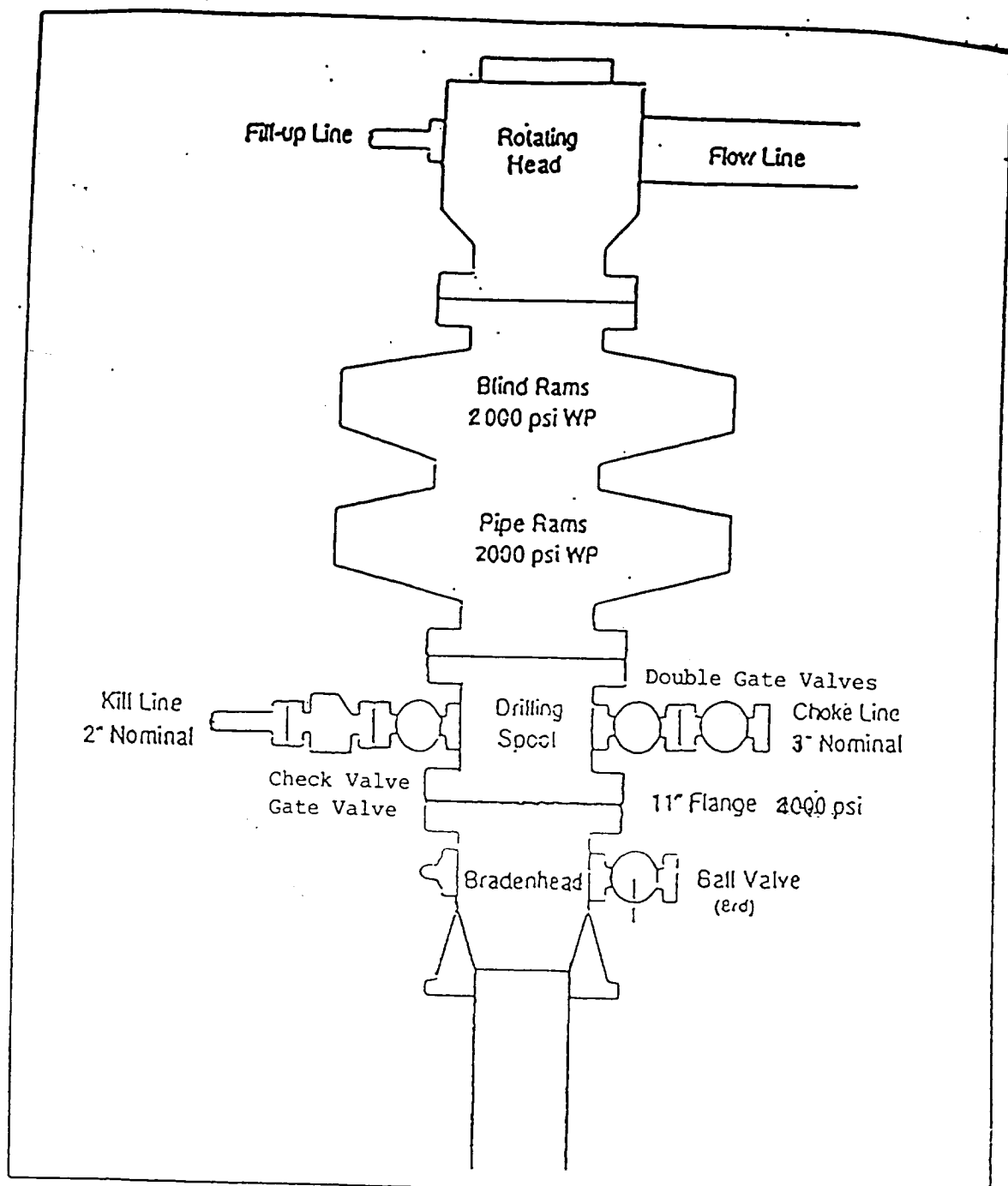
Surface casing: 7" - Use 30 sx (36 cu. ft.) of Cl "B" with 2% CaCl<sub>2</sub> (Yield = 1.18 cu. ft./sk; slurry weight = 15.6 PPG). 100% excess to circulate cement to surface. WOC 12 hours. Pressure test surface casing to 600 psi for 30 min.

Production Casing: 4-1/2" - Before cementing circulate hole with at least 1-1/2 hole volumes of mud. Precede cement with 30 bbls of fresh water. Lead with 150x(310 cu.ft) of Cl "B" with 2% SMS, 1/4#/sk. celloflake. (Yield = 2.06 cu.ft./sk; slurry weight = 12.5 PPG). Tail with 100 sx (118 cu.ft.) of Cl "B" with 2% CaCl<sub>2</sub>, and 1/4#/sk. celloflake/sk. (Yield = 1.18 cu. ft./sk; slurry weight = 15.6 PPG) Total cement volume is 428 cu.ft. (100% excess to circulate cement to surface).

  
Paul C. Thompson, P.E.

# EXHIBIT 1

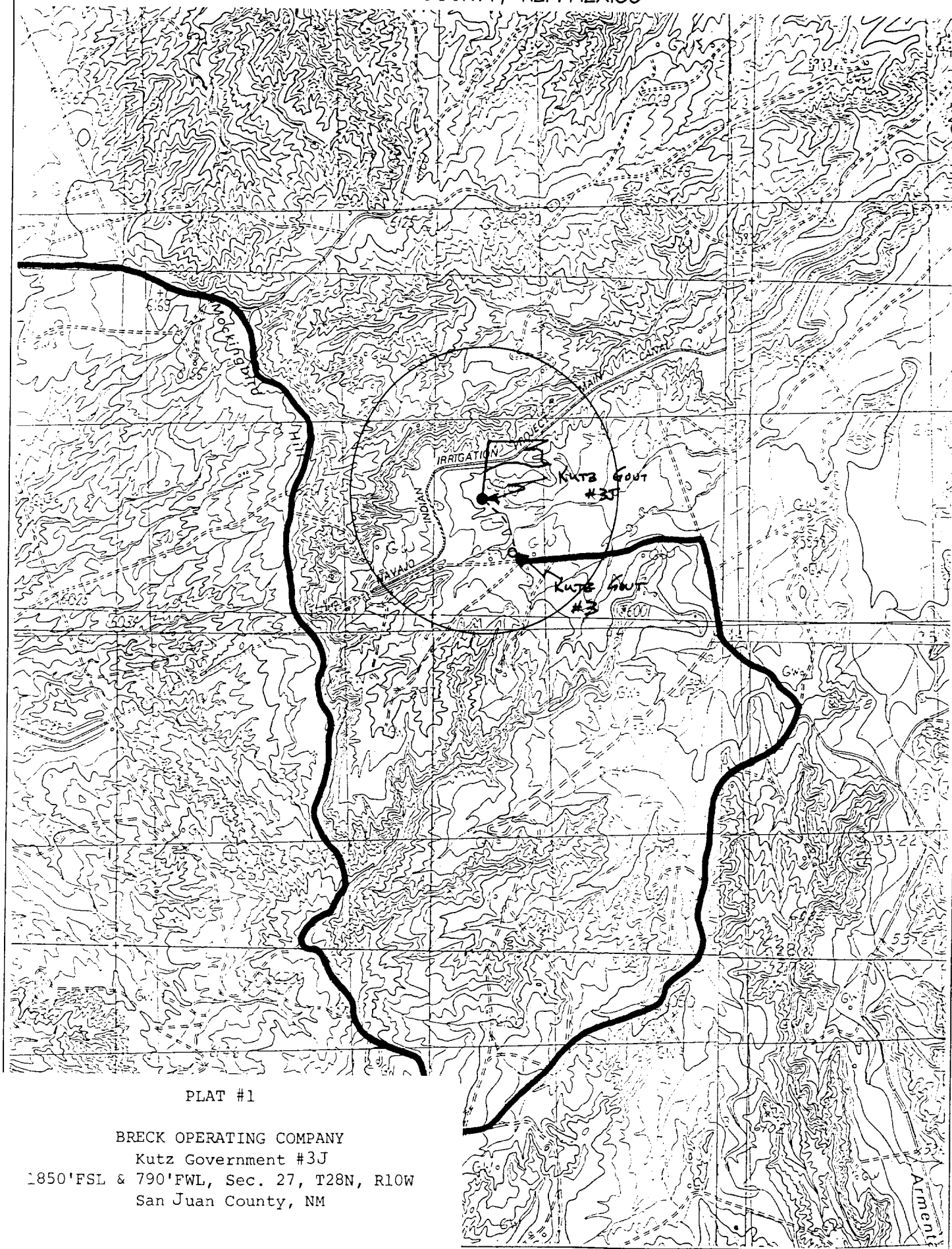
## BOP STACK ARRANGEMENT



All ram type preventers and related equipment will be hydraulically tested at nipple-up and after any use under pressure to 1500 psi. The blind rams will be hydraulically activated and checked for operational readiness each time pipe is pulled out of the hole. All checks of the BOP stack and equipment will be noted on the daily drilling report. The BOP equipment will include a kelly cock with handle, floor safety valve with change overs for each tool joint in the string, and choke manifold all rated to 2000 psi.

1850' FSL & 790' FWL, SECTION 27, T28N, R10W, N.M.P.M.  
SAN JUAN COUNTY, NEW MEXICO

1850' FSL & 790' FWL, SECTION 27, T28N, R10W, N.M.P.M.  
SAN JUAN COUNTY, NEW MEXICO



PLAT #1

BRECK OPERATING COMPANY

Kutz Government #3J

1850' FSL & 790' FWL, Sec. 27, T28N, R10W

San Juan County, NM