

RECEIVED
UNITED STATES
DEPARTMENT OF THE INTERIOR
GEOLOGICAL SURVEY
NOV 22 1983SUMMIT IN DUPLICATE*
Other instructions on
reverse side)Form approved.
Budget Bureau No. 42-R1425.

APPLICATION FOR PERMIT TO DRILL OR DEEPEN OR PLUG BACK

1a. TYPE OF WORK

DRILL ☒DEEPEN ☐

DIST. 3

PLUG BACK ☐

b. TYPE OF WELL

OIL
WELL ☐GAS
WELL ☒

OTHER

SINGLE
ZONE ☒MULTIPLE
ZONE ☐

2. NAME OF OPERATOR

Southland Royalty Company

3. ADDRESS OF OPERATOR

P. O. Drawer 570, Farmington, New Mexico 87499

4. LOCATION OF WELL (Report location clearly and in accordance with any State requirements.*)

At surface

990' FSL & 900' FEL

At proposed prod. zone

14. DISTANCE IN MILES AND DIRECTION FROM NEAREST TOWN OR POST OFFICE

45 miles East of Blanco, New Mexico

15. DISTANCE FROM PROPOSED*

LOCATION TO NEAREST

PROPERTY OR LEASE LINE, FT.

(Also to nearest drig. unit line, if any)

3300'

18. DISTANCE FROM PROPOSED LOCATION*

TO NEAREST WELL, DRILLING, COMPLETED,
OR APPLIED FOR, ON THIS LEASE, FT.

N/A

19. PROPOSED DEPTH

4100'

17. NO. OF ACRES ASSIGNED
TO THIS WELL

160

20. ROTARY OR CABLE TOOLS

Rotary

21. ELEVATIONS (Show whether DF, RT, GR, etc.)

6990' GL

22. APPROX. DATE WORK WILL START*

December 1, 1983

23.

PROPOSED CASING AND CEMENTING PROGRAM

SIZE OF HOLE	SIZE OF CASING	WEIGHT PER FOOT	SETTING DEPTH	QUANTITY OF CEMENT
12-1/4"	8-5/8"	24#, K-55	200'	165 cu.ft. (Circulate to surface)
7-7/8"	4-1/2"	10.50#, K-55	4100'	267 cu.ft. (Cover Ojo Alamo)

Surface formation is San Jose.

Top of Ojo Alamo sand is at 3320'.

Top of Pictured Cliffs sand is at 3730'.

Fresh water mud will be used to drill from surface to total depth.

It is anticipated that an IEL, CNL, FDC logs will be run from total depth to surface casing.

No abnormal pressures or poisonous gases are anticipated in this well.

It is expected that this well will be drilled before December 31, 1983.

This depends on time required for approvals, rig availability and the weather.

Gas is not dedicated.

IN ABOVE SPACE DESCRIBE PROPOSED PROGRAM: If proposal is to deepen or plug back, give data on present productive zone and proposed new productive zone. If proposal is to drill or deepen directionally, give pertinent data on subsurface locations and measured and true vertical depths. Give blowout preventer program, if any.

24.

SIGNED

TITLE District Engineer

(This space for Federal or State office use)

PERMIT NO.

APPROVAL DATE

APPROVED BY

TITLE

CONDITIONS OF APPROVAL, IF ANY:

DATE 11-03-83
APPROVED
AS AMENDED
DATE NOV 18 1983
AREA MANAGER
FARMINGTON RESOURCE AREA

OIL CONSERVATION DIVISION

P. O. BOX 2048
SANTA FE, NEW MEXICO 87501

Form C-107
Revised 10-1-78

All distances must be from the outer boundaries of the Section.

Operator SOUTHLAND ROYALTY COMPANY			Lease JICARILLA 152		Well No. 1
Unit Letter P	Section 6	Township 29N	Range 3W	County Rio Arriba	
Actual Footage Location of Well: 990 feet from the South line and 900 feet from the East line					
Ground Level Elev: 6990' GL	Producing Formation Pictured Cliffs Ext.		Pool East Blanco		Dedicated Acreage: 160 Acres

1. Outline the acreage dedicated to the subject well by colored pencil or hachure marks on the plat below.
2. If more than one lease is dedicated to the well, outline each and identify the ownership thereof (both as to working interest and royalty).
3. If more than one lease of different ownership is dedicated to the well, have the interests of all owners been consolidated by communitization, unitization, force-pooling, etc?

☐ Yes ☐ No If answer is "yes," type of consolidation _____

If answer is "no," list the owners and tract descriptions which have actually been consolidated. (Use reverse side of this form if necessary.) _____

No allowable will be assigned to the well until all interests have been consolidated (by communitization, unitization, forced-pooling, or otherwise) or until a non-standard unit, eliminating such interests, has been approved by the Commission.

RECEIVED

NOV 07 1983

BUREAU OF LAND MANAGEMENT
ARMINGTON RESOURCE AREA

RECEIVED

NOV 22 1983

OIL CON. DIV.

DIST. 3 Sec.

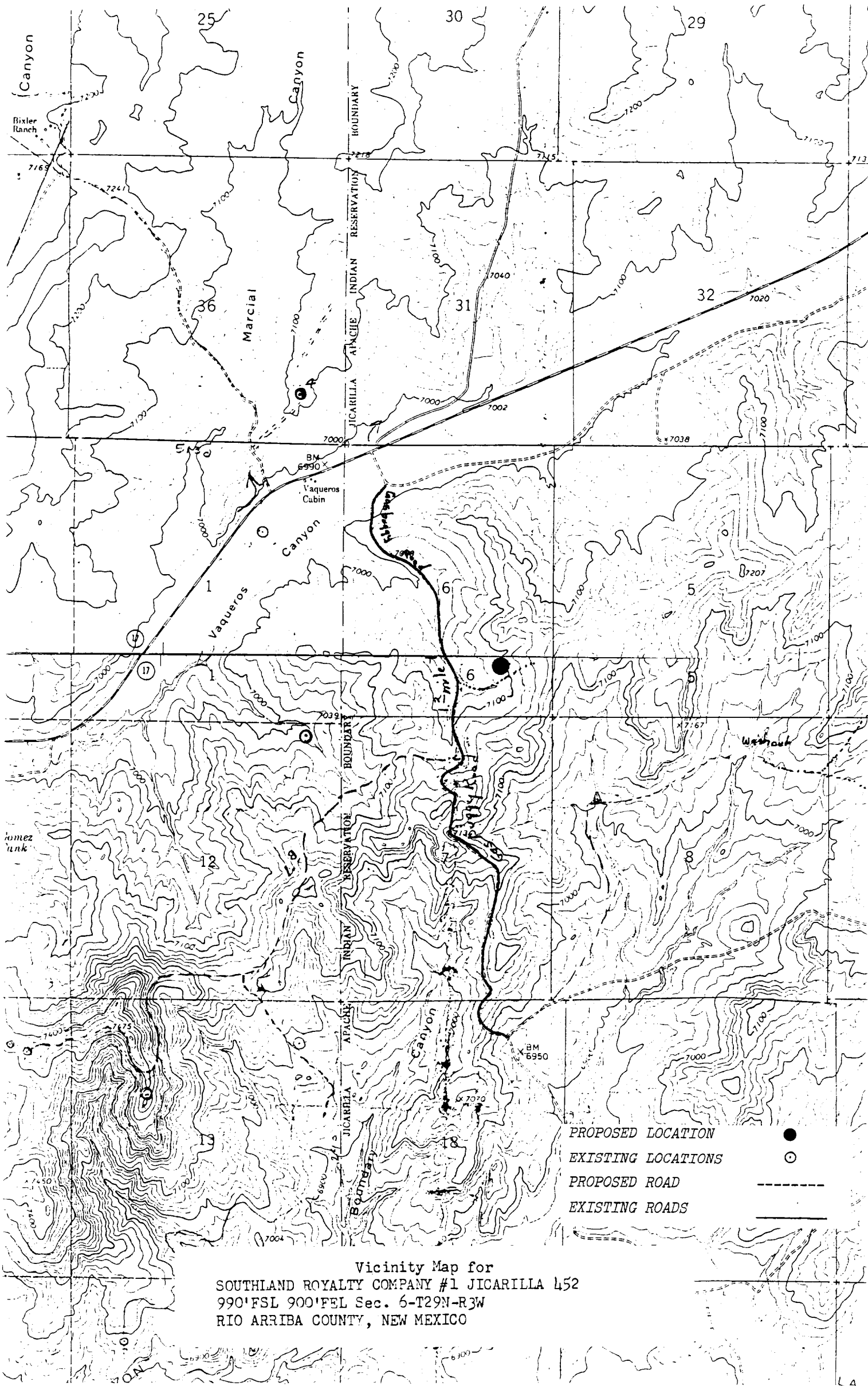
6

900'

1006

Scale: 1"=1000'

CERTIFICATION	
I hereby certify that the information contained herein is true and complete to the best of my knowledge and belief.	
<i>R. E. Fielder</i>	
Name	R. E. Fielder
Position	District Engineer
Company	Southland Royalty Company
Date	November 3, 1983
I hereby certify that the well location shown on this plat was plotted from field notes of actual surveys made by me or under my supervision, and that the same is true and correct to the best of my knowledge and belief.	
Date Surveyed	September 23, 1983
Registered Professional Engineer and Land Surveyor	<i>Fred B. Kerr Jr.</i>
Certificate No.	3950



3100 (016)
Jic. Cont. 452

Caller Service 4104
Farmington, New Mexico 87499

CERTIFIED—RETURN RECEIPT REQUESTED

DEC 06 1984

Southland Royalty Company
P. O. Drawer 570
Farmington, NM 87499

Gentlemen:

Reference is made to your Application for Permit to Drill (APP) well No. 1 Jicarilla 452, 31/46F/4 sec. 6, T. 29 N., R. 3 W., Rio Arriba County, New Mexico, lessee Jicarilla Contract 452. As discussed with Ester Grayeyes of your company on December 3, 1984, the subject APP is rescinded and returned due to drilling not being commenced within one year of the approval date.

You are required to request surface rehabilitation instructions from this office if construction activities occurred on the referenced drill site. If this office does not receive comment within 15 days, it will presume that no construction occurred and proceed accordingly. Later discovery that construction activities have in fact occurred, will result in an assessment.

Sincerely yours,

(SIGNED) JOHN W. SALAS

Area Manager

Enclosure

cc:
BIA, Dulce
NMOCC

RECEIVED
DEC 07 1984
OIL CON. DIV.
DIST. 3

ABANDONED LOCATION

J

30-039-23343

11-22-83

F. Loc. 990/S; 900/E

Elev. 6990 GL

Spd.

Comp.

TD

PB

Cu. ft.

Cu. ft.

Cu. ft.

Casing S.

@

W

Sx.

Int.

@

W

Sx.

Pr.

@

W

Sx.

T

@

T Gas

Csg. Perf.

Prod. Stim.

TRANS

Grav. 1st Del. Gas

I.P. BO/D
MCF/D After

Hrs.

SICP

PSI After

Days GOR

1st Del. Oil

TOPS		NiTD X	Well Log	TEST DATA						
			Plot X	Schd.	PC	Q	PW	PD	D	Ref. No.
Ojo Alamo		C-103								
Kirtland		C-104	Electric Log							
Fruitland			C-122							
Pictured Cliffs		Ditr	Dfa							
Chacra		Datr	Dac							
Cliff House										
Menefee										
Point Lookout										
Mancos										
Gallup										
Greenhorn										
Dakota										
Entrada										
		Acres 160								

P
o
o

E. Blanco PCCo. RA S 6 T 29N R 3W U P Oper. Southland Royalty Co. Lse. Jicarilla 452 No. 1

Jicarilla 452 #1

P-6-29N-3W

Southland Royalty Co.