

UNITED STATES
DEPARTMENT OF THE INTERIOR
BUREAU OF LAND MANAGEMENT

FORM APPROVED
OMB NO. 1004-0135
Expires: November 30, 2000

SUNDRY NOTICES AND REPORTS ON WELLS
Do not use this form for proposals to drill or to re-enter an abandoned well. Use form 3160-3 (APD) for such proposals.

SUBMIT IN TRIPLICATE - Other instructions on reverse side.

1. Type of Well <input type="checkbox"/> Oil Well <input checked="" type="checkbox"/> Gas Well <input type="checkbox"/> Other		Well Name and No. GALLEGOS CANYON UNIT 41	
2. Name of Operator AMOCO PRODUCTION COMPANY		Contact: CHERRY HLAVA E-Mail: hlava@bp.com	3. API Well No. 80-045-07074
3a. Address P.O. BOX 3092 HOUSTON, TX 77253		3b. Phone No. (include area code) Ph: 281.366.4081 Fx: 281.366.0700	4. Field and Pool, or Exploratory BASIN FC & KUTZ PC, WEST
4. Location of Well (Footage, Sec., T., R., M., or Survey Description) Sec 32 T28N R12W Mer NENE 990FNL 990FEL			11. County or Parish, and State SAN JUAN COUNTY, NM

12. CHECK APPROPRIATE BOX(ES) TO INDICATE NATURE OF NOTICE, REPORT, OR OTHER DATA

TYPE OF SUBMISSION	TYPE OF ACTION			
<input checked="" type="checkbox"/> Notice of Intent	<input type="checkbox"/> Acidize	<input type="checkbox"/> Deepen	<input type="checkbox"/> Production (Start/Resume)	<input type="checkbox"/> Water Shut-Off
<input type="checkbox"/> Subsequent Report	<input type="checkbox"/> Alter Casing	<input type="checkbox"/> Fracture Treat	<input type="checkbox"/> Reclamation	<input type="checkbox"/> Well Integrity
<input type="checkbox"/> Final Abandonment Notice	<input type="checkbox"/> Casing Repair	<input type="checkbox"/> New Construction	<input type="checkbox"/> Recomplete	<input checked="" type="checkbox"/> SUBCOM
	<input type="checkbox"/> Change Plans	<input type="checkbox"/> Plug and Abandon	<input type="checkbox"/> Temporarily Abandon	
	<input type="checkbox"/> Convert to Injection	<input type="checkbox"/> Plug Back	<input type="checkbox"/> Water Disposal	

13. Describe Proposed or Completed Operation (clearly state all pertinent details, including estimated starting date of any proposed work and approximate duration thereof. If the proposal is to deepen directionally or recomple horizontally, give subsurface locations and measured and true vertical depths of all pertinent markers and zones. Attach the Bond under which the work will be performed or provide the Bond No. on file with BLM/BIA. Required subsequent reports shall be filed within 30 days following completion of the involved operations. If the operation results in a multiple completion or recomple in a new interval, a Form 3160-4 shall be filed once testing has been completed. Final Abandonment Notices shall be filed only after all requirements, including reclamation, have been completed, and the operator has determined that the site is ready for final inspection.)

Amoco Production Company requests permission to complete the subject well into Kutz Picture Cliffs, West pool and commingle production downhole with the existing Basin Fruitland Coal as per the attached procedure. The Basin Fruitland Coal (71629) & Kutz Picture Cliffs, West (79680) Pools are Pre-Approved for Downhole Commingling per NMOCD CASE NO.12520, ORDER NO. R-11567 effective 04/26/2001. Although the interest owners are not identical between these two pools, this same order established approval for subsequent applications for the downhole commingling of production in wellbores within the Gallegos Canyon Unit without notice to the unit interest owners, therefore, no additional notification is required prior to downhole commingling approval. Production is proposed to be allocated based on the subtraction method using the projected future decline for production from the Basin Fruitland Coal. That production shall serve as a base for production subtracted from the total production for the commingled well. The balance of the production will be attributed to the Kutz Picture Cliffs sand. Attached is the future production decline estimates for the Basin Fruitland Coal. Commingling Production Downhole in the subject well from the proposed pools will not reduce the value of the total remaining production.

DHC 471 A2

14. I hereby certify that the foregoing is true and correct.	
Electronic Submission #5605 verified by the BLM Well Information System For AMOCO PRODUCTION COMPANY, sent to the Farmington Committed to AFMSS for processing by Maurice Johnson on 07/19/2001 ()	
Name (Printed/Typed) CHERRY HLAVA	Title AUTHORIZED REPRESENTATIVE
Signature	Date 07/19/2001

THIS SPACE FOR FEDERAL OR STATE OFFICE USE

Approved By <u>/s/ Jim Lovato</u>	Title	Date <u>AUG 21</u>
Conditions of approval, if any, are attached. Approval of this notice does not warrant or certify that the applicant holds legal or equitable title to those rights in the subject lease which would entitle the applicant to conduct operations thereon.	Office	

Title 18 U.S.C. Section 1001 and Title 43 U.S.C. Section 1212, make it a crime for any person knowingly and willfully to make to any department or agency of the United States any false, fictitious or fraudulent statements or representations as to any matter within its jurisdiction.

**** ORIGINAL ** ORIGINAL ** ORIGINAL ** ORIGINAL ** ORIGINAL ** ORIGINAL ** ORIGINAL ****

10000

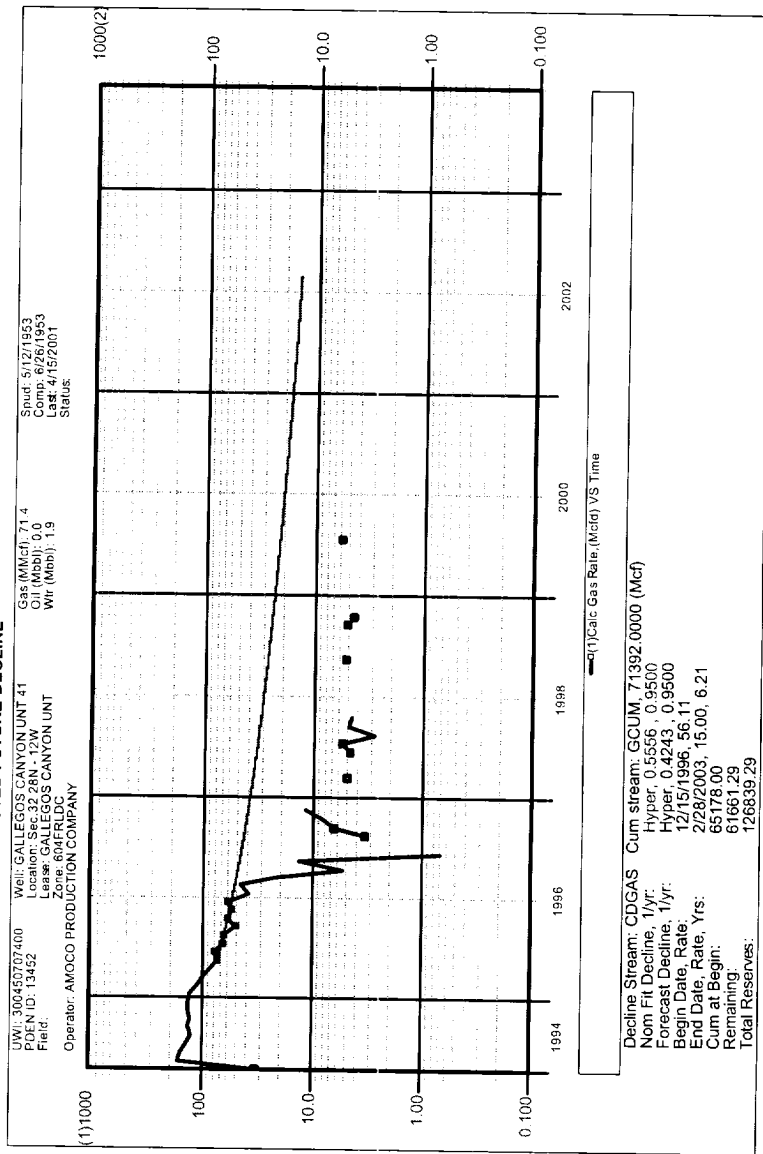
PDEN	UWI	DATE	Forecast
13452	300450707400	01/15/2002	56
13452	300450707400	02/15/2002	55
13452	300450707400	03/15/2002	53
13452	300450707400	04/15/2002	52
13452	300450707400	05/15/2002	50
13452	300450707400	06/15/2002	48
13452	300450707400	07/15/2002	47
13452	300450707400	08/15/2002	46
13452	300450707400	09/15/2002	44
13452	300450707400	10/15/2002	43
13452	300450707400	11/15/2002	42
13452	300450707400	12/15/2002	41
13452	300450707400	01/15/2003	40
13452	300450707400	02/15/2003	39
13452	300450707400	03/15/2003	38
13452	300450707400	04/15/2003	37
13452	300450707400	05/15/2003	36
13452	300450707400	06/15/2003	35
13452	300450707400	07/15/2003	34
13452	300450707400	08/15/2003	34
13452	300450707400	09/15/2003	33
13452	300450707400	10/15/2003	32
13452	300450707400	11/15/2003	32
13452	300450707400	12/15/2003	31
13452	300450707400	01/15/2004	30
13452	300450707400	02/15/2004	30
13452	300450707400	03/15/2004	29
13452	300450707400	04/15/2004	29
13452	300450707400	05/15/2004	28
13452	300450707400	06/15/2004	28
13452	300450707400	07/15/2004	27
13452	300450707400	08/15/2004	27
13452	300450707400	09/15/2004	26
13452	300450707400	10/15/2004	26
13452	300450707400	11/15/2004	25
13452	300450707400	12/15/2004	25
13452	300450707400	01/15/2005	25
13452	300450707400	02/15/2005	24
13452	300450707400	03/15/2005	24
13452	300450707400	04/15/2005	23
13452	300450707400	05/15/2005	23
13452	300450707400	06/15/2005	23

GALLEGOS CANYON

UNIT 41

BASIN FRUITLAND COAL

PROJECTED FUTURE DECLINE



GALLEGOS CANYON
UNIT 41
BASIN FRUITLAND COAL
PROJECTED FUTURE DECLINE

PDEN	UWI	DATE	Forecast
13452	300450707400	07/15/2005	22
13452	300450707400	08/15/2005	22
13452	300450707400	09/15/2005	22
13452	300450707400	10/15/2005	21
13452	300450707400	11/15/2005	21
13452	300450707400	12/15/2005	21
13452	300450707400	01/15/2006	21
13452	300450707400	02/15/2006	20
13452	300450707400	03/15/2006	20
13452	300450707400	04/15/2006	20
13452	300450707400	05/15/2006	19
13452	300450707400	06/15/2006	19
13452	300450707400	07/15/2006	19
13452	300450707400	08/15/2006	19
13452	300450707400	09/15/2006	19
13452	300450707400	10/15/2006	18
13452	300450707400	11/15/2006	18
13452	300450707400	12/15/2006	18
13452	300450707400	01/15/2007	18
13452	300450707400	02/15/2007	17
13452	300450707400	03/15/2007	17
13452	300450707400	04/15/2007	17
13452	300450707400	05/15/2007	17
13452	300450707400	06/15/2007	17
13452	300450707400	07/15/2007	16
13452	300450707400	08/15/2007	16
13452	300450707400	09/15/2007	16
13452	300450707400	10/15/2007	16
13452	300450707400	11/15/2007	16
13452	300450707400	12/15/2007	16
13452	300450707400	01/15/2008	15
13452	300450707400	02/15/2008	15
13452	300450707400	03/15/2008	15

Gallegos Canyon Unit 41
Unit A Sec 32 T28N - R12W
API No. 30-045-07074
San Juan County, NM

Procedure

1. Prepare location. Set deadmen anchors.
 2. MIRU SU. Record TP and CP. ND WH, NU BOP.
- NOTE: If well is located in crop circle, may need to lower WH to accommodate future pumping unit.
3. POOH with 2-3/8" tbg.
 4. RU air package. RIH with bit x DC's. D/O CIBP at 1295'. C/O well to 1367' TD.
 5. PU csg scraper for 6-5/8" 20# and 7" 23# combination string. Make scraper run to csg shoe at 1298'.
 6. RIH with RBP and set at +/- 1200'. Load well with water and test csg to 300 psi. Blow well dry. Retrieve RBP.
 7. RIH with AD-1 tension pkr and 2-7/8" frac string. Set pkr @ +/- 1200'. Load backside with clean KCl water. Pressure test to 300 psi.
 8. RU surface with 5000 psi frac valve.
 9. MIRU Schlumberger. Frac well according to attached Pumping Schedule with ___ gallons 70 quality nitrogen foam and ___ lbs ___ sand. Tail in with PropNet on last ___ lbs.
 10. Flush with foam to top perf at 1276'. Do not overdisplace.
 11. Flow back immediately after frac equipment is off the well. Estimate flowrate using choke nipple, using a 100 psi gauge. Flow until well logs off or fluid recovery falls off to less than 2 bbls fluid per hour.
 12. Release pkr. POOH and LD frac string and pkr.
 13. RIH with bit x DC's. RU air package and clean out to TD.
 14. PU above perfs. Flow well 30 minutes. RIH to TD, cleaning out again if necessary. Repeat Step 15 until sand feed-in stabilizes.
 15. RIH with following production string:
 - a) 1 jt 2-3/8" tbg
 - b) F-nipple
 - c) 2-3/8" tbg to surfaceLand EOT at +/- 1310'.
 16. ND BOP. NU tree. RDMO SU.

Allen Kutch
281-366-7955 office
281-366-0700 fax

Gallegos Canyon Unit 41
San Juan County, NM
Unit A Section 32 of R28W - T12N
Run 27

ATK

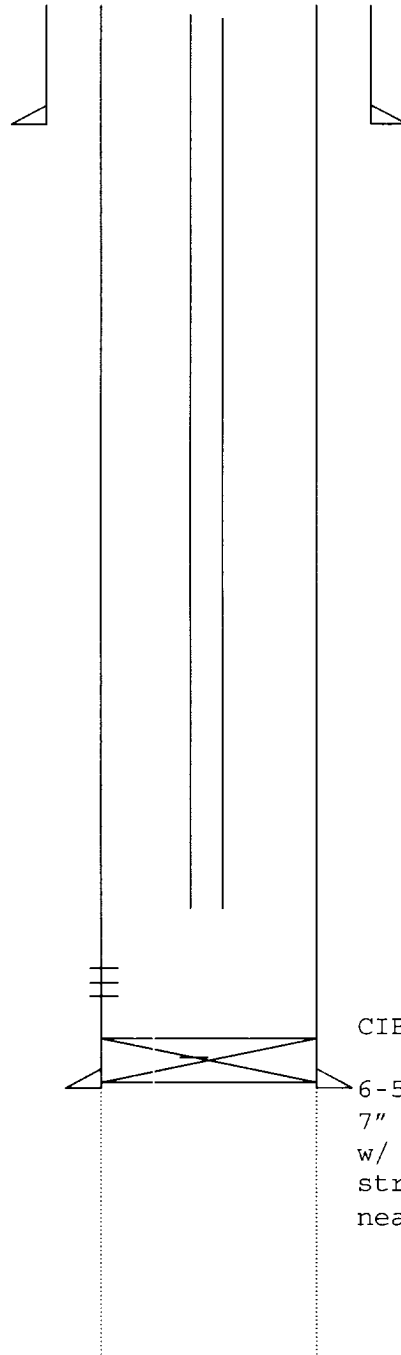
KB: 10' abv GL

SN @ 1279'

2-3/8" EUE 8rd @
1291'

FC perfs:
1276' - 1290'

T/ PC @ 1293'



9-5/8" 32.2# H40 @
92' w/ 75 sxs

CIBP @ 1295'

6-5/8" 20# LW (0 - 1210')
7" 23# J55 (1210' - 1298')
w/ 156 sxs cmt + 156 cf
stratacrete tailed w/ 40 sxs
neat

PBTD: 1355' (gravel)
TD: 1367'