

NEW MEXICO
OIL CONSERVATION COMMISSION

Gas Well Plat

Date 2-15-55

Cesinger Phillips
Operator Lease Well No. 1

Name of Producing Formation P.C. Pool West Kutzy P.C.

No. Acres Dedicated to the Well 160 ✓

Indicate land status and show ownership Federal

SECTION 11 TOWNSHIP 28 N RANGE 13 W

| | | | |
|---------------------------|---|---|---|
| Fractional Section | | | |
| | | | |
| | | | |
| Section Standard Parallel | | | |
| 4 | 3 | 2 | 1 |
| → 1650 → | | | |
| 990 | | | |
| Phillips | | | |

2268.42' 2275.22'

I hereby certify that the information given above is true and complete to the best of my knowledge.

Name E. F. Cesinger
Position Geologist
Representing Self
Address 1345 Pacific Ave
Dallas 2 Texas

(over)

OIL CONSERVATION COMMISSION

ATTN: DIRECTOR'S OFFICE

Charles F. Smith 3

1997, 1998, 1999, 2000, 2001, 2002, 2003, 2004, 2005, 2006, 2007, 2008, 2009, 2010, 2011, 2012, 2013, 2014, 2015, 2016, 2017, 2018, 2019, 2020, 2021, 2022, 2023, 2024, 2025, 2026, 2027, 2028, 2029, 2030, 2031, 2032, 2033, 2034, 2035, 2036, 2037, 2038, 2039, 2040, 2041, 2042, 2043, 2044, 2045, 2046, 2047, 2048, 2049, 2050, 2051, 2052, 2053, 2054, 2055, 2056, 2057, 2058, 2059, 2060, 2061, 2062, 2063, 2064, 2065, 2066, 2067, 2068, 2069, 2070, 2071, 2072, 2073, 2074, 2075, 2076, 2077, 2078, 2079, 2080, 2081, 2082, 2083, 2084, 2085, 2086, 2087, 2088, 2089, 2090, 2091, 2092, 2093, 2094, 2095, 2096, 2097, 2098, 2099, 2100, 2101, 2102, 2103, 2104, 2105, 2106, 2107, 2108, 2109, 2110, 2111, 2112, 2113, 2114, 2115, 2116, 2117, 2118, 2119, 2120, 2121, 2122, 2123, 2124, 2125, 2126, 2127, 2128, 2129, 2130, 2131, 2132, 2133, 2134, 2135, 2136, 2137, 2138, 2139, 2140, 2141, 2142, 2143, 2144, 2145, 2146, 2147, 2148, 2149, 2150, 2151, 2152, 2153, 2154, 2155, 2156, 2157, 2158, 2159, 2160, 2161, 2162, 2163, 2164, 2165, 2166, 2167, 2168, 2169, 2170, 2171, 2172, 2173, 2174, 2175, 2176, 2177, 2178, 2179, 2180, 2181, 2182, 2183, 2184, 2185, 2186, 2187, 2188, 2189, 2190, 2191, 2192, 2193, 2194, 2195, 2196, 2197, 2198, 2199, 2200, 2201, 2202, 2203, 2204, 2205, 2206, 2207, 2208, 2209, 2210, 2211, 2212, 2213, 2214, 2215, 2216, 2217, 2218, 2219, 2220, 2221, 2222, 2223, 2224, 2225, 2226, 2227, 2228, 2229, 2230, 2231, 2232, 2233, 2234, 2235, 2236, 2237, 2238, 2239, 2240, 2241, 2242, 2243, 2244, 2245, 2246, 2247, 2248, 2249, 2250, 2251, 2252, 2253, 2254, 2255, 2256, 2257, 2258, 2259, 2260, 2261, 2262, 2263, 2264, 2265, 2266, 2267, 2268, 2269, 2270, 2271, 2272, 2273, 2274, 2275, 2276, 2277, 2278, 2279, 2280, 2281, 2282, 2283, 2284, 2285, 2286, 2287, 2288, 2289, 2290, 2291, 2292, 2293, 2294, 2295, 2296, 2297, 2298, 2299, 2300, 2301, 2302, 2303, 2304, 2305, 2306, 2307, 2308, 2309, 2310, 2311, 2312, 2313, 2314, 2315, 2316, 2317, 2318, 2319, 2320, 2321, 2322, 2323, 2324, 2325, 2326, 2327, 2328, 2329, 2330, 2331, 2332, 2333, 2334, 2335, 2336, 2337, 2338, 2339, 2340, 2341, 2342, 2343, 2344, 2345, 2346, 2347, 2348, 2349, 2350, 2351, 2352, 2353, 2354, 2355, 2356, 2357, 2358, 2359, 2360, 2361, 2362, 2363, 2364, 2365, 2366, 2367, 2368, 2369, 2370, 2371, 2372, 2373, 2374, 2375, 2376, 2377, 2378, 2379, 2380, 2381, 2382, 2383, 2384, 2385, 2386, 2387, 2388, 2389, 2390, 2391, 2392, 2393, 2394, 2395, 2396, 2397, 2398, 2399, 2400, 2401, 2402, 2403, 2404, 2405, 2406, 2407, 2408, 2409, 2410, 2411, 2412, 2413, 2414, 2415, 2416, 2417, 2418, 2419, 2420, 2421, 2422, 2423, 2424, 2425, 2426, 2427, 2428, 2429, 2430, 2431, 2432, 2433, 2434, 2435, 2436, 2437, 2438, 2439, 2440, 2441, 2442, 2443, 2444, 2445, 2446, 2447, 2448, 2449, 2450, 2451, 2452, 2453, 2454, 2455, 2456, 2457, 2458, 2459, 2460, 2461, 2462, 2463, 2464, 2465, 2466, 2467, 2468, 2469, 2470, 2471, 2472, 2473, 2474, 2475, 2476, 2477, 2478, 2479, 2480, 2481, 2482, 2483, 2484, 2485, 2486, 2487, 2488, 2489, 2490, 2491, 2492, 2493, 2494, 2495, 2496, 2497, 2498, 2499, 2500, 2501, 2502, 2503, 2504, 2505, 2506, 2507, 2508, 2509, 2510, 2511, 2512, 2513, 2514, 2515, 2516, 2517, 2518, 2519, 2520, 2521, 2522, 2523, 2524, 2525, 2526, 2527, 2528, 2529, 2530, 2531, 2532, 2533, 2534, 2535, 2536, 2537, 2538, 2539, 2540, 2541, 2542, 2543, 2544, 2545, 2546, 2547, 2548, 2549, 2550, 2551, 2552, 2553, 2554, 2555, 2556, 2557, 2558, 2559, 2560, 2561, 2562, 2563, 2564, 2565, 2566, 2567, 2568, 2569, 2570, 2571, 2572, 2573, 2574, 2575, 2576, 2577, 2578, 2579, 2580, 2581, 2582, 2583, 2584, 2585, 2586, 2587, 2588, 2589, 2590, 2591, 2592, 2593, 2594, 2595, 2596, 2597, 2598, 2599, 2600, 2601, 2602, 2603, 2604, 2605, 2606, 2607, 2608, 2609, 2610, 2611, 2612, 2613, 2614, 2615, 2616, 2617, 2618, 2619, 2620, 2621, 2622, 2623, 2624, 2625, 2626, 2627, 2628, 2629, 2630, 2631, 2632, 2633, 2634, 2635, 2636, 2637, 2638, 2639, 2640, 2641, 2642, 2643, 2644, 2645, 2646, 2647, 2648, 2649, 2650, 2651, 2652, 2653, 2654, 2655, 2656, 2657, 2658, 2659, 2660, 2661, 2662, 2663, 2664, 2665, 2666, 2667, 2668, 2669, 2670, 2671, 2672, 2673, 2674, 2675, 2676, 2677, 2678, 26

7

Figure 1. The effect of the concentration of the *Agaricus bisporus* spores on the growth of *Agaricus bisporus* on the substrate. The concentration of the spores was 10⁴, 10⁵, 10⁶, 10⁷, 10⁸, 10⁹, 10¹⁰, 10¹¹, 10¹², 10¹³, 10¹⁴, 10¹⁵, 10¹⁶, 10¹⁷, 10¹⁸, 10¹⁹, 10²⁰, 10²¹, 10²², 10²³, 10²⁴, 10²⁵, 10²⁶, 10²⁷, 10²⁸, 10²⁹, 10³⁰, 10³¹, 10³², 10³³, 10³⁴, 10³⁵, 10³⁶, 10³⁷, 10³⁸, 10³⁹, 10⁴⁰, 10⁴¹, 10⁴², 10⁴³, 10⁴⁴, 10⁴⁵, 10⁴⁶, 10⁴⁷, 10⁴⁸, 10⁴⁹, 10⁵⁰, 10⁵¹, 10⁵², 10⁵³, 10⁵⁴, 10⁵⁵, 10⁵⁶, 10⁵⁷, 10⁵⁸, 10⁵⁹, 10⁶⁰, 10⁶¹, 10⁶², 10⁶³, 10⁶⁴, 10⁶⁵, 10⁶⁶, 10⁶⁷, 10⁶⁸, 10⁶⁹, 10⁷⁰, 10⁷¹, 10⁷², 10⁷³, 10⁷⁴, 10⁷⁵, 10⁷⁶, 10⁷⁷, 10⁷⁸, 10⁷⁹, 10⁸⁰, 10⁸¹, 10⁸², 10⁸³, 10⁸⁴, 10⁸⁵, 10⁸⁶, 10⁸⁷, 10⁸⁸, 10⁸⁹, 10⁹⁰, 10⁹¹, 10⁹², 10⁹³, 10⁹⁴, 10⁹⁵, 10⁹⁶, 10⁹⁷, 10⁹⁸, 10⁹⁹, 10¹⁰⁰, 10¹⁰¹, 10¹⁰², 10¹⁰³, 10¹⁰⁴, 10¹⁰⁵, 10¹⁰⁶, 10¹⁰⁷, 10¹⁰⁸, 10¹⁰⁹, 10¹¹⁰, 10¹¹¹, 10¹¹², 10¹¹³, 10¹¹⁴, 10¹¹⁵, 10¹¹⁶, 10¹¹⁷, 10¹¹⁸, 10¹¹⁹, 10¹²⁰, 10¹²¹, 10¹²², 10¹²³, 10¹²⁴, 10¹²⁵, 10¹²⁶, 10¹²⁷, 10¹²⁸, 10¹²⁹, 10¹³⁰, 10¹³¹, 10¹³², 10¹³³, 10¹³⁴, 10¹³⁵, 10¹³⁶, 10¹³⁷, 10¹³⁸, 10¹³⁹, 10¹⁴⁰, 10¹⁴¹, 10¹⁴², 10¹⁴³, 10¹⁴⁴, 10¹⁴⁵, 10¹⁴⁶, 10¹⁴⁷, 10¹⁴⁸, 10¹⁴⁹, 10¹⁵⁰, 10¹⁵¹, 10¹⁵², 10¹⁵³, 10¹⁵⁴, 10¹⁵⁵, 10¹⁵⁶, 10¹⁵⁷, 10¹⁵⁸, 10¹⁵⁹, 10¹⁶⁰, 10¹⁶¹, 10¹⁶², 10¹⁶³, 10¹⁶⁴, 10¹⁶⁵, 10¹⁶⁶, 10¹⁶⁷, 10¹⁶⁸, 10¹⁶⁹, 10¹⁷⁰, 10¹⁷¹, 10¹⁷², 10¹⁷³, 10¹⁷⁴, 10¹⁷⁵, 10¹⁷⁶, 10¹⁷⁷, 10¹⁷⁸, 10¹⁷⁹, 10¹⁸⁰, 10¹⁸¹, 10¹⁸², 10¹⁸³, 10¹⁸⁴, 10¹⁸⁵, 10¹⁸⁶, 10¹⁸⁷, 10¹⁸⁸, 10¹⁸⁹, 10¹⁹⁰, 10¹⁹¹, 10¹⁹², 10¹⁹³, 10¹⁹⁴, 10¹⁹⁵, 10¹⁹⁶, 10¹⁹⁷, 10¹⁹⁸, 10¹⁹⁹, 10²⁰⁰, 10²⁰¹, 10²⁰², 10²⁰³, 10²⁰⁴, 10²⁰⁵, 10²⁰⁶, 10²⁰⁷, 10²⁰⁸, 10²⁰⁹, 10²¹⁰, 10²¹¹, 10²¹², 10²¹³, 10²¹⁴, 10²¹⁵, 10²¹⁶, 10²¹⁷, 10²¹⁸, 10²¹⁹, 10²²⁰, 10²²¹, 10²²², 10²²³, 10²²⁴, 10²²⁵, 10²²⁶, 10²²⁷, 10²²⁸, 10²²⁹, 10²³⁰, 10²³¹, 10²³², 10²³³, 10²³⁴, 10²³⁵, 10²³⁶, 10²³⁷, 10²³⁸, 10²³⁹, 10²⁴⁰, 10²⁴¹, 10²⁴², 10²⁴³, 10²⁴⁴, 10²⁴⁵, 10²⁴⁶, 10²⁴⁷, 10²⁴⁸, 10²⁴⁹, 10²⁵⁰, 10²⁵¹, 10²⁵², 10²⁵³, 10²⁵⁴, 10²⁵⁵, 10²⁵⁶, 10²⁵⁷, 10²⁵⁸, 10²⁵⁹, 10²⁶⁰, 10²⁶¹, 10²⁶², 10²⁶³, 10²⁶⁴, 10²⁶⁵, 10²⁶⁶, 10²⁶⁷, 10²⁶⁸, 10²⁶⁹, 10²⁷⁰, 10²⁷¹, 10²⁷², 10²⁷³, 10²⁷⁴, 10²⁷⁵, 10²⁷⁶, 10²⁷⁷, 10²⁷⁸, 10²⁷⁹, 10²⁸⁰, 10²⁸¹, 10²⁸², 10²⁸³, 10²⁸⁴, 10²⁸⁵, 10²⁸⁶, 10²⁸⁷, 10²⁸⁸, 10²⁸⁹, 10²⁹⁰, 10²⁹¹, 10²⁹², 10²⁹³, 10²⁹⁴, 10²⁹⁵, 10²⁹⁶, 10²⁹⁷, 10²⁹⁸, 10²⁹⁹, 10³⁰⁰, 10³⁰¹, 10³⁰², 10³⁰³, 10³⁰⁴, 10³⁰⁵, 10³⁰⁶, 10³⁰⁷, 10³⁰⁸, 10³⁰⁹, 10³¹⁰, 10³¹¹, 10³¹², 10³¹³, 10³¹⁴, 10³¹⁵, 10³¹⁶, 10³¹⁷, 10³¹⁸, 10³¹⁹, 10³²⁰, 10³²¹, 10³²², 10³²³, 10³²⁴, 10³²⁵, 10³²⁶, 10³²⁷, 10³²⁸, 10³²⁹, 10³³⁰, 10³³¹, 10³³², 10³³³, 10³³⁴, 10³³⁵, 10³³⁶, 10³³⁷, 10³³⁸, 10³³⁹, 10³⁴⁰, 10³⁴¹, 10³⁴², 10³⁴³, 10³⁴⁴, 10³⁴⁵, 10³⁴⁶, 10³⁴⁷, 10³⁴⁸, 10<

1.66 $\times 10^{-4}$ g/cm³ (1.66 $\times 10^{-4}$ g/cm³ = 1.66 $\times 10^{-4}$ g/cm³).

1

Figure 1. The effect of the concentration of the *Agaricus bisporus* spores on the growth of *Agaricus bisporus* and *Agaricus bisporus* spores on the growth of *Agaricus bisporus*.

1

FIG. 10. Effect of temperature on the degradation of the glucose monomer under 100% relative humidity. The reaction was carried out in a 100-ml glass bottle containing 10 ml of 0.1 M phosphate buffer (pH 7.0) and 100 mg of glucose. The reaction was initiated by the addition of 100 μ l of the enzyme solution (100 U/ml) and the reaction was stopped by the addition of 100 μ l of 10% trichloroacetic acid. The reaction mixture was then extracted with 100 μ l of 10% trichloroacetic acid and the supernatant was analyzed by HPLC.

COMPANY E. F. Cesinger

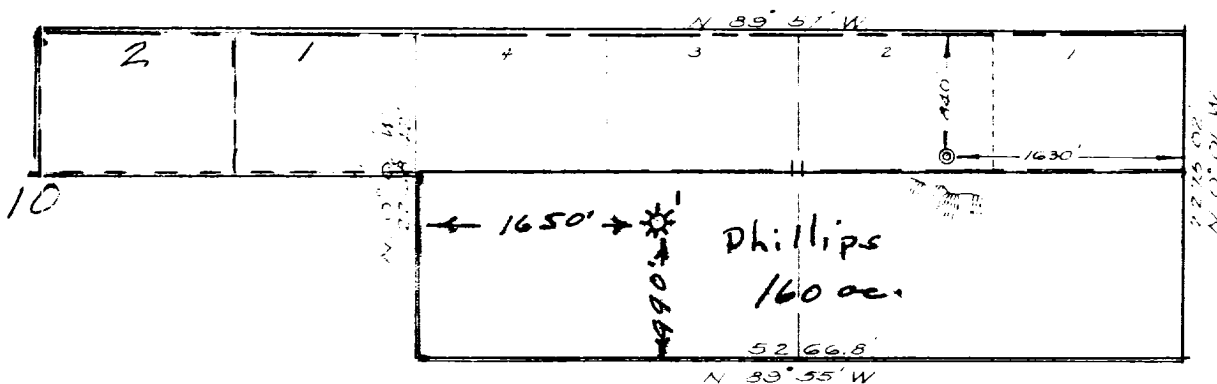
Well Name & No. _____ Lease No. _____

Location 840' from the North line and 1630' from the East line.

Being in a fractional section.

Sec. 11, T28 N., R13 W., N.M.P.M., San Juan County, New Mexico.

Ground Elevation 5909



(FRACTIONAL SECTION)
SCALE, 4 INCHES=1 MILE

TOTAL AREA OF SEC.
(275.36 A.)

Surveyed January 31, 1955

This is to certify that the above plat was prepared from field notes of actual surveys made by me or under my supervision and that the same are true and correct to the best of my knowledge and belief.

Ernest V. Echohawk

Ernest V. Echohawk
Registered Land Surveyor
N. M. Reg. #1545



OIL CONSERVATION COMMISSION
 ALTEC DISTRICT OFFICE

No. Copies Received **3**

DISTRIBUTION

| | NO. FURNISHED | |
|-------------------|------------------|---|
| Agent | 1 | |
| Land Office | | |
| Production Office | | |
| State Land Office | 1 | |
| U. S. G. S. | | |
| Transporter | 1 | ✓ |
| File | | |