

UNITED STATES
DEPARTMENT OF THE INTERIOR
GEOLOGICAL SURVEY

APPLICATION FOR PERMIT TO DRILL, DEEPEN, OR PLUG BACK

1a. TYPE OF WORK
DRILL ☒ DEEPEN ☐ PLUG BACK ☐

b. TYPE OF WELL
OIL WELL ☒ GAS WELL ☐ OTHER ☐ SINGLE BORE ☒ MULTIPLE BORE ☐

2. NAME OF OPERATOR
Tenneco Oil Company

3. ADDRESS OF OPERATOR
P. O. Box 1714, Durango, Colorado 81301

4. LOCATION OF WELL (Report location clearly and in accordance with any State requirements.)
At surface 1660' FNL 660' FEL
At proposed prod. zone Unit Letter "H"

14. DISTANCE IN MILES AND DIRECTION FROM NEAREST TOWN OR POST OFFICE*

16. DISTANCE FROM PROPOSED* LOCATION TO NEAREST PROPERTY OR LEASE LINE, FT. (Also to nearest drlg. unit line, if any)

16. NO. OF ACRES IN LEASE
160

17. NO. OF ACRES ASSIGNED TO THIS WELL
160 NE/4

18. DISTANCE FROM PROPOSED LOCATION* TO NEAREST WELL, DRILLING, COMPLETED, OR APPLIED FOR, ON THIS LEASE, FT.

19. PROPOSED DEPTH
5280

20. ROTARY OR CABLE TOOLS
Rotary

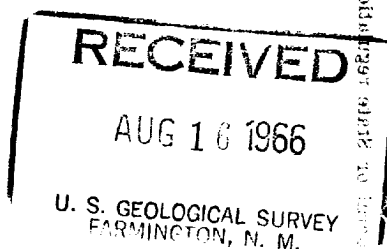
21. ELEVATIONS (Show whether DF, RT, GR, etc.)
5742 GR

22. APPROX. DATE WORK WILL START*
August 16, 1966

28. PROPOSED CASING AND CEMENTING PROGRAM

SIZE OF HOLE	SIZE OF CASING	WEIGHT PER FOOT	SETTING DEPTH	QUANTITY OF CEMENT
12-1/4	8-5/8	20 & 24#	250	Cement to surface
7-7/8	4-1/2	10.5 & 11.6#	5280	1st stage 235 sx
				2nd stage cement to surface.

We propose to rig up drill to approximate T. D. 5280. Run IES & GR Density logs. Run casing as shown above w/stage collar set approximately 300' below bottom of Mesaverde. WOC. Perforate and frac and complete as a single Gallup oil well. Run 2-3/8" tubing and conduct potential tests.



IN ABOVE SPACE DESCRIBE PROPOSED PROGRAM: If proposal is to deepen or plug back, give data on present productive zone and proposed new productive zone. If proposal is to drill or deepen directionally, give pertinent data on subsurface locations and measured and true vertical depths. Give blowout preventer program, if any.

24. Harold C. Nichols Senior Production Clerk
SIGNED Harold C. Nichols DATE August 15, 1966

(This space for Federal or State office use)

PERMIT NO. _____ APPROVAL DATE _____

APPROVED BY Sm TITLE _____ DATE _____

CONDITIONS OF APPROVAL, IF ANY:

5 USGS, Frmg., 1 Champlin, Denver, 1 Tidewater, Dgo., 1 Sunray DX, Roswell
1 Gulf, Roswell, 1 TOC File.

See Instructions On Reverse Side

**NEW MEXICO OIL CONSERVATION COMMISSION
WELL LOCATION AND ACERAGE DEDICATION PLAT**

All distances must be from the outer boundaries of the Section



Operator TENNECO OIL COMPANY		Lease NAVAJO "A"	
Unit Letter H	Section 34	Township 28 North	Range 14 West ✓
		County San Juan	

Actual Footage Location of Well:
1660 feet from the **North** line and **660** feet from the **East** ✓ line
 Ground Level Elev. **5742' ungraded** ✓ Producing Formation **Wildcat Gallup** Pool **Wildcat Gallup** ✓ Dedicated Acreage: **NE/4 160** Acres

1. Outline the acreage dedicated to the subject well by colored pencil or hachure marks on the plat below.
2. If more than one lease is dedicated to the well, outline each and identify the ownership thereof (both as to working interest and royalty),
3. If more than one lease of different ownership is dedicated to the well, have the interests of all owners been consolidated by communitization, unitization, force-pooling, etc?

() Yes () No If answer is "yes," type of consolidation

If answer is "no," list the owners and tract descriptions which have actually consolidated. (Use reverse side of this form if necessary.)

No allowable will be assigned to the well until all interests have been consolidated (by communitization, unitization, forced-pooling, or otherwise) or until a non standard unit, eliminating such interests, has been approved by the Commission.

CERTIFICATION

I hereby certify that the information contained herein is true and complete to the best of my knowledge and belief.

Harold C. Nichols
Name **Harold C. Nichols**

Position **Senior Production Clerk**

Company **Tenneco Oil Company**

Date **August 15, 1966**

Date

I hereby certify that the well location shown on this plat was plotted from field notes of actual surveys made by me or under my supervision, and that the same is true and correct to the best of my knowledge and belief.

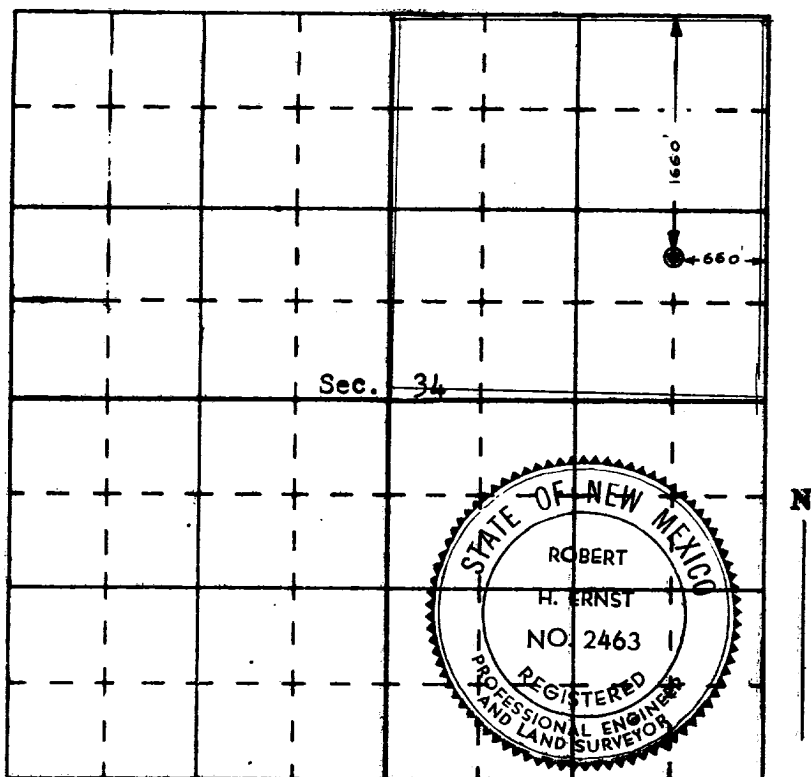
11 August 1966

Date Surveyed

Robert H. Ernst
Registered Professional Engineer
and/or Land Surveyor

Robert H. Ernst
N. Mex. PE & LS 2463

Certificate No.



ERNST ENGINEERING CO.
DURANGO, COLORADO