

**NEW MEXICO OIL CONSERVATION COMMISSION
WELL LOCATION AND ACERAGE DEDICATION PLAT**

All distances must be from the outer boundaries of the Section

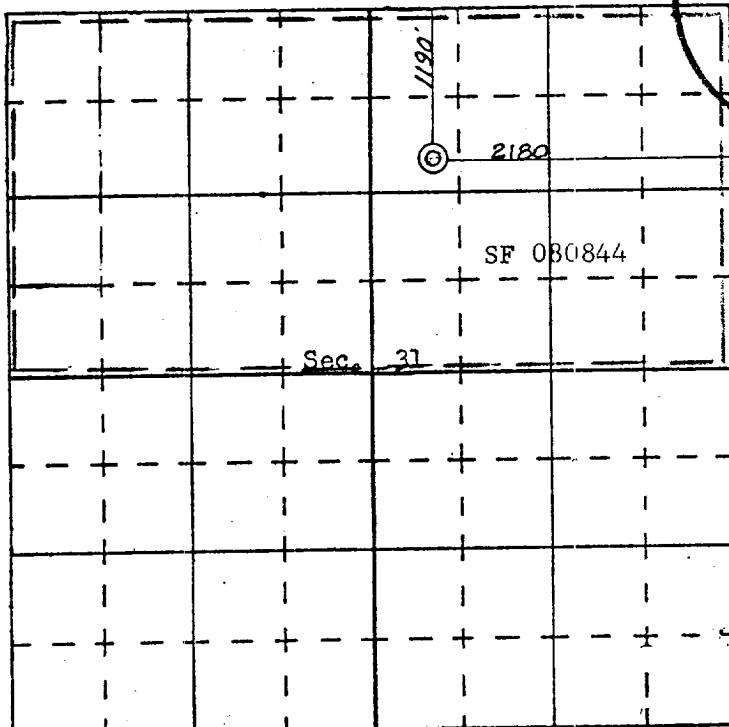
Operator PAN AMERICAN PETROLEUM CORPORATION			Lease T. L. RHODES "C"		Well No. 3
Unit Letter B	Section 31	Township 28 NORTH	Range 11 WEST	County SAN JUAN	
Actual Footage Location of Well: 1190 feet from the NORTH line and 2180 feet from the EAST line					
Ground Level Elev. REPORT LATER	Producing Formation DAKOTA		Pool BASIN DAKOTA	Dedicated Acreage: 320 317.85 Acres	

1. Outline the acreage dedicated to the subject well by colored pencil or hachure marks on the plat below.
2. If more than one lease is dedicated to the well, outline each and identify the ownership thereof (both as to working interest and royalty),
3. If more than one lease of different ownership is dedicated to the well, have the interests of all owners been consolidated by communitization, unitization, force-pooling, etc?

() Yes () No If answer is "yes," type of consolidation

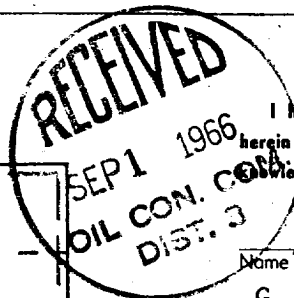
If answer is "no," list the owners and tract descriptions which have actually consolidated. (Use reverse side of this form if necessary.)

No allowable will be assigned to the well until all interests have been consolidated (by communitization, unitization, forced-pooling, or otherwise) or until a non standard unit, eliminating such interests, has been approved by the Commission.



SCALE—4 INCHES EQUALS 1 MILE

SAN JUAN ENGINEERING COMPANY, FARMINGTON, N. M.



CERTIFICATION

I hereby certify that the information contained herein is true and complete to the best of my knowledge and belief.

Name G. W. Eaton, Jr.
Position Area Engineer
Company PAN AMERICAN PETROLEUM CORPORATION
Date August 29, 1966

I hereby certify that the well location shown on this plat was plotted from field notes of actual surveys made by me or under my supervision, and that the same is true and correct to the best of my knowledge and belief.

Date Surveyed August 25, 1966
Registered Professional Engineer and/or Land Surveyor James E. Beese
Certificate No. 1463