

**UNITED STATES  
DEPARTMENT OF THE INTERIOR  
GEOLOGICAL SURVEY**

(Other instructions on reverse side)

Budget Bureau No. 42-R1425.

30-045-22233

5. LEASE DESIGNATION AND SERIAL NO.

6. IF INDIAN, ALLOTTEE OR TRIBE NAME

7. UNIT AGREEMENT NAME

Gallegos Canyon Unit

8. FARM OR LEASE NAME

9. WELL NO.

269

10. FIELD AND POOL, OR WILDCAT

Kutz Pictured Cliffs

11. SEC., T., R., M., OR BLK.  
AND SURVEY OR AREA

Sec. 18-T28N-R12W

12. COUNTY OR PARISH

San Juan

13. STATE

New Mexico

1a. TYPE OF WORK

DRILL ☒DEEPEN ☐PLUG BACK ☐

b. TYPE OF WELL

OIL  
WELL ☐GAS  
WELL ☒

OTHER

SINGLE  
ZONE ☐MULTIPLE  
ZONE ☐

2. NAME OF OPERATOR

Energy Reserves Group, Inc.

3. ADDRESS OF OPERATOR

Box 3280, Casper, Wyoming 82602

4. LOCATION OF WELL (Report location clearly and in accordance with any State requirements.)

At surface 790' FSL, 1580' FEL (NE SW SE)

At proposed prod. zone

14. DISTANCE IN MILES AND DIRECTION FROM NEAREST TOWN OR POST OFFICE\*

About 5 miles south &amp; 5 miles east of Farmington

15. DISTANCE FROM PROPOSED\*

LOCATION TO NEAREST  
PROPERTY OR LEASE LINE, FT.  
(Also to nearest drlg. unit line, if any)

NA

16. NO. OF ACRES IN LEASE

Unitized

17. NO. OF ACRES ASSIGNED  
TO THIS WELL

160

18. DISTANCE FROM PROPOSED LOCATION\*  
TO NEAREST WELL, DRILLING, COMPLETED,  
OR APPLIED FOR, ON THIS LEASE, FT.

2750'

19. PROPOSED DEPTH

1470

20. ROTARY OR CABLE TOOLS

Rotary

21. ELEVATIONS (Show whether DF, RT, GR, etc.)

5697' GRD

22. APPROX. DATE WORK WILL START\*

November, 1976

23.

**PROPOSED CASING AND CEMENTING PROGRAM**

SIZE OF HOLE	SIZE OF CASING	WEIGHT PER FOOT	SETTING DEPTH	QUANTITY OF CEMENT
9-7/8"	7"	17#	100'	50 sks
6 1/4"	4 1/2"	9.5#	1470'	100 sks

Energy Reserves Group, Inc. proposes to drill the above well with rotary tools from surface to TD. The anticipated zone of completion is the Pictured Cliffs formation. No cores or DST's are planned. Copies of all logs run will be furnished upon completion of the well. Copies of the location plat are attached. The estimated tops are as follows: Pictured Cliffs ss 1365', TD 1470'.

A Series 600 or 900 BOP will be used while drilling this well.

The gas is dedicated.

**RECEIVED**

NOV 2 1976

U. S. GEOLOGICAL SURVEY

IN ABOVE SPACE DESCRIBE PROPOSED PROGRAM: If proposal is to deepen or plug back, give data on present productive zone and proposed new productive zone. If proposal is to drill or deepen directionally, give pertinent data on subsurface locations and measured and true vertical depths. Give blowout preventer program, if any.

24.

SIGNED

Dean B. Barner

TITLE

RMD Production Engineer

DATE

October 28,

(This space for Federal or State office use)

1976

PERMIT NO.

APPROVAL DATE

APPROVED BY

TITLE

DATE

CONDITIONS OF APPROVAL, IF ANY:

Okaf

\*See Instructions On Reverse Side

NEW MEXICO OIL CONSERVATION COMMISSION  
WELL LOCATION AND ACREAGE DEDICATION PLAT

Form C-102  
Supersedes C-128  
Effective 1-1-65

All distances must be from the outer boundaries of the Section.

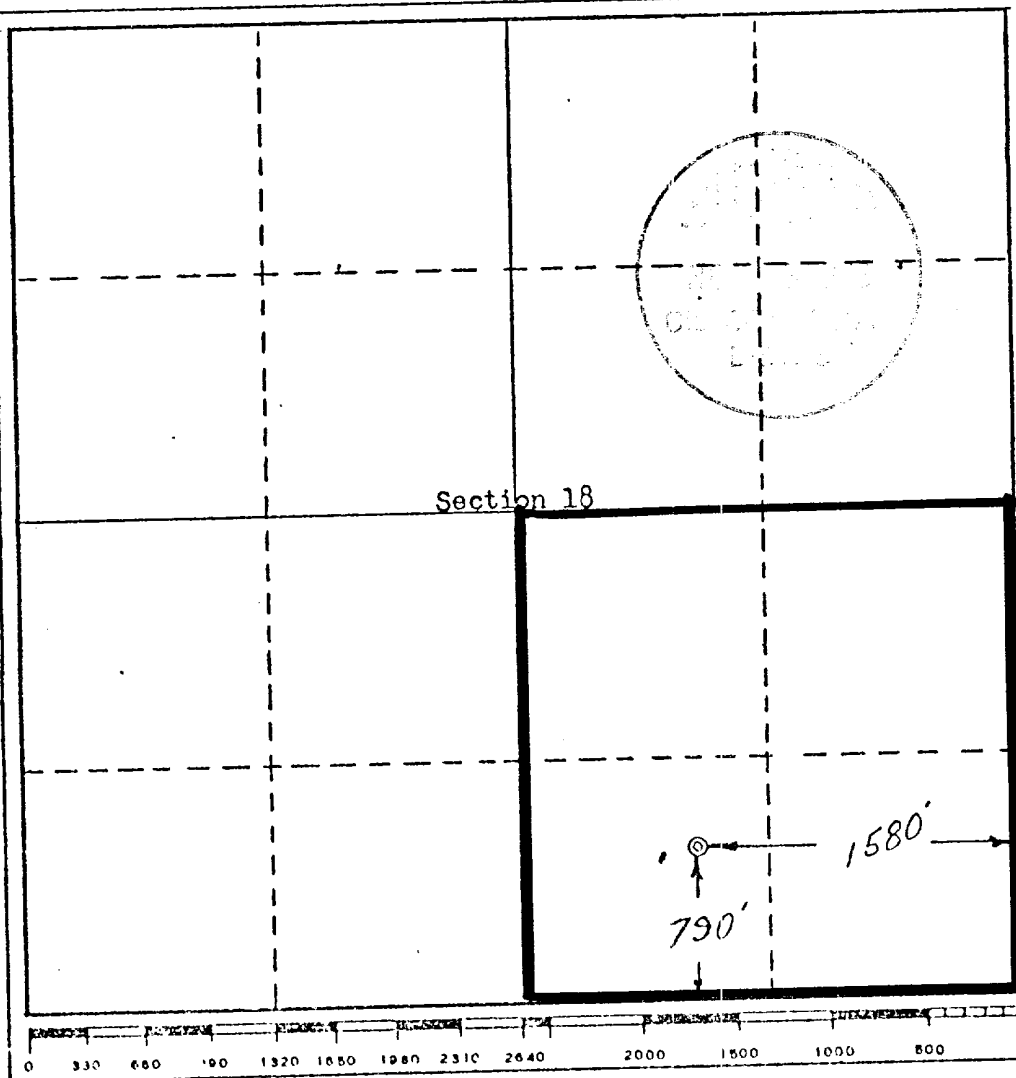
Operator <b>Energy Reserves Group, Inc.</b>		Lease <b>Gallegos Canyon Unit-Pict. Cliffs</b>		Well No. <b>269</b>
Unit Letter <b>0</b>	Section <b>18</b>	Township <b>28 North</b>	Range <b>12 West</b>	County <b>San Juan</b>
Actual Footage Location of Well: <b>790</b> feet from the <b>South</b> line and <b>1580</b> feet from the <b>East</b> line				
Ground Level Elev. <b>5697</b>	Producing Formation <b>Pictured Cliffs</b>	Pool <del>WES</del> <b>Kutz Pictured Cliffs</b>	Dedicated Acreage: <b>160</b> Acres	

1. Outline the acreage dedicated to the subject well by colored pencil or hachure marks on the plat below.
2. If more than one lease is dedicated to the well, outline each and identify the ownership thereof (both as to working interest and royalty).
3. If more than one lease of different ownership is dedicated to the well, have the interests of all owners been consolidated by communitization, unitization, force-pooling, etc?

☐ Yes ☐ No If answer is "yes," type of consolidation \_\_\_\_\_

If answer is "no," list the owners and tract descriptions which have actually been consolidated. (Use reverse side of this form if necessary.) \_\_\_\_\_

No allowable will be assigned to the well until all interests have been consolidated (by communitization, unitization, forced-pooling, or otherwise) or until a non-standard unit, eliminating such interests, has been approved by the Commission.



CERTIFICATION

I hereby certify that the information contained herein is true and complete to the best of my knowledge and belief.

Name Dean B. Barber  
Position RMD Production Engineer  
Company Energy Reserves Group, Inc.  
Date October 28, 1976

I hereby certify that the well location shown on this plat was plotted from field notes of actual surveys made by me or under my supervision, and that the same is true and correct to the best of my knowledge and belief.

Date Surveyed September 29, 1976

Registered Professional Engineer and Land Surveyor

Certificate No. 9084

Energy Reserves Group, Inc.  
Gallegos Canyon Unit-PC #269

Attachment with Form 9-331C

1. The geologic name of the surface formation is the Nacimiento formation.
2. The estimated tops of the important geologic markers in well are:  
Pictured Cliffs ss 1365'  
TD 1470'
3. It is anticipated that the Pictured Cliffs formation will be gas bearing.
4. The proposed casing program is as follows:  
Set 7" 17# used casing at 100'+ and cement back to surface with 50 sks cement. Set 4½" 9.5# second hand casing at 1470'+ (in a 6½" hole) and cement with 100 sks cement. Est. cement top at 850' ±.
5. Pressure control equipment consists of the following:  
A Shaffer type-double ram BOP-hydraulically operated - 10" - 600 or 900 series. The BOP will be pressure tested to 400 psi after installation and prior to drilling out from under surface casing. See attachment #1.
6. Well is to be drilled with gel mud plus required additives for hole conditions and formations to be drilled. Normally, about 30-40 sacks of gel will be on location at any one time. There is no need for weighting material.
7. Auxiliary equipment - a float at the bit and a full opening floor valve to stab into the drill pipe.
8. No coring is planned. No DST's are planned. It is planned to run only the IES log from TD to base of surface casing.
9. No abnormal pressures or temperatures are anticipated. H<sub>2</sub>S is not a potential problem in this area.
10. It is planned to commence drilling operations soon after regulatory approval has been received. It is planned to drill this well along with about ten (10) others yet this year. It is estimated it will take 6 days to drill and log this well.

NTL-6

1. Existing Roads -

- a. See attachment # 2
- b. Go about 6 miles east of Farmington on Bloomfield Highway. Turn south on black<sup>top</sup> just east of fairgrounds. Go across the river and up on top of cliffs and get on black top road and follow till you get to proposed well # 274. Turn off of black top to north and proceed to proposed well # 269 access road. (About 9 miles from Bloomfield Highway.)
- c. See attachment # 2
- d. Not applicable - Development well
- e. See attachment # 2
- f. Existing roads are in good condition and will not require any improvements or maintenance.

2. Planned Access Roads - see attachment # 2

You leave a black top road near proposed well # 274 and follow a field road for about 1 ½ miles to the point you turn off on the east side of the road to go to this well site.

- (1) about 16' +
- (2) about 6 to 8 % in three places
- (3) NR
- (4) (5) For adequate drainage in case it rains while we are drilling this well, it will be necessary to install two (2) large culverts (30" +) in two separate major drainages on the access road to be constructed.
- (6) NR
- (7) NR

3. Location of Existing Wells - see attachment # 2

- (6) Producing wells - #5 - #19 - #20 - #21 - #22 - #35 - #36.
- (7) Shut-in wells - #37 - #38.

4. Location of Existing and/or Proposed Facilities -

- a.
  - (1) None
  - (2) At each well
  - (3) None
  - (4) El Paso has gathering lines to each well
  - (5) None
  - (6) None
- b. If well is productive, El Paso will hook up at well. A meter house will be required at well.

5. Location and type of Water Supply -

- a. It might be possible to dig a water hole with a cat in the Gallegos Canyon near proposed well # 274. If this does not provide enough water, it will be necessary to get it from the San Juan river near where you cross it after turning off of Bloomfield Highway.
- b. In either case it will be necessary to haul it by truck.
- c. NA

6. Source of Construction Materials -

None required.

NTL-6

7. Methods for Handling Waste Disposal -

- (1) (2) (3) Reserve pit at drill site will be used to contain these items.
- (4) None
- (5) Small, deep trash pit will be dug at drill site location
- (6) Area will be policed up after drilling rig moves out and debris put in trash pit.

8. Ancillary Facilities -

None required.

9. Well site Layout -

- (1) See attachment # 3
- (2) See attachment # 4
- (3) See attachment # 4
- (4) It is not planned to line pits.

10. Plans for Restoration of Surface -

- (1) As soon as pit is dried up, it will be filled in and the surface leveled and contoured to surrounding terrain.
- (2) As per regulatory agencies recommendation
- (3) Rehabilitation will take place as soon as practical after drilling and completion operations are completed.

11. Other Information -

- (1) Topography at well site and on access road to be constructed is very rough and cut by many gulleys. Soil is very sandy. There are a few scrub trees growing and no other vegetation
- (2) There are no other surface use activities. The surface is owned by Federal Government.
- (3) There is no water nearby and there are no occupied dwellings nearby.

12. Lessee's or Operators Representative -

Mr. T.C. Durham is the Foreman who will represent Energy Reserves Group, Inc. during our drilling and clean up operations in connection with this well. He lives in Farmington, New Mexico. His address and phone no's are as follows :-

Home - 1205 Camino Largo	Ph. 505-325-7978
Office - Box 9 7	Ph. 505-327-1639
Contact - Unit 539	Ph. 505-325-1873

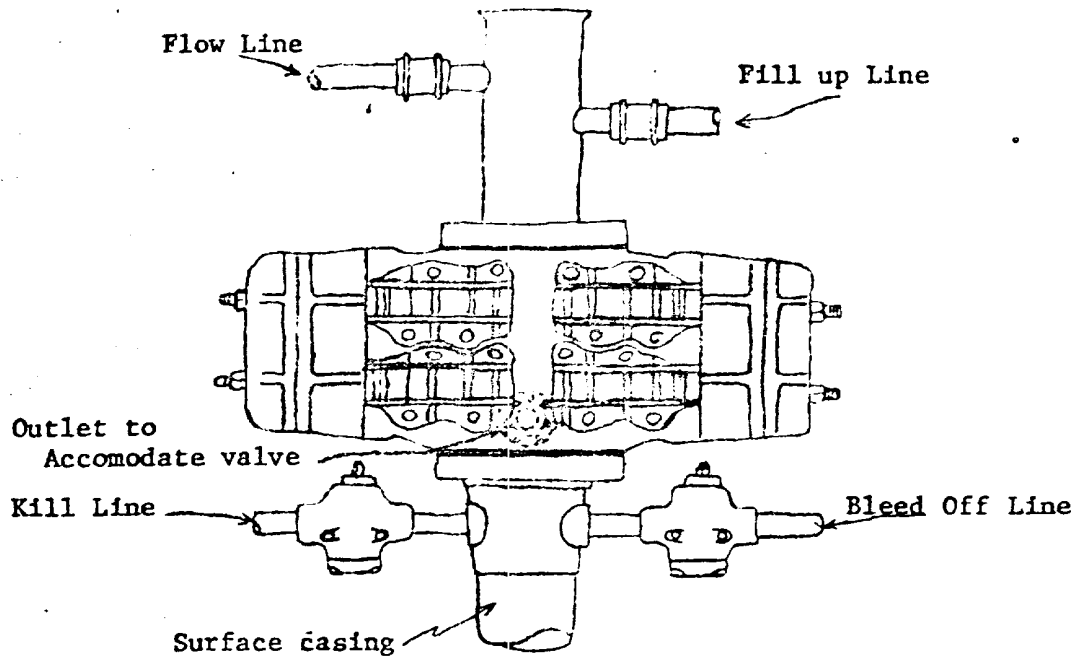
CERTIFICATION

I hereby certify that I, or persons under my direct supervision, have inspected the proposed drillsite and access route; that I am familiar with the conditions which presently exist; that the statements made in this plan are, to the best of my knowledge, true and correct; and, that the work associated with the operations proposed herein will be performed by \_\_\_\_\_

Frank Frank Jones  
and its contractors and subcontractors in conformity with this plan and the terms and conditions under which it is approved.

10-5-76  
Date

W. S. Jones Foreman  
Name and Title



Blowout preventer is Shaffer double hydraulic equipped with drill pipe rams in the top and blind rams in the bottom.

Blowout preventer closing unit is Koomey 30 gallon accumulator unit.

When choke manifold is used, it will be installed downstream from bleed off valve.

Kill line or bleed off line may be installed at flanged opening in blowout preventer.

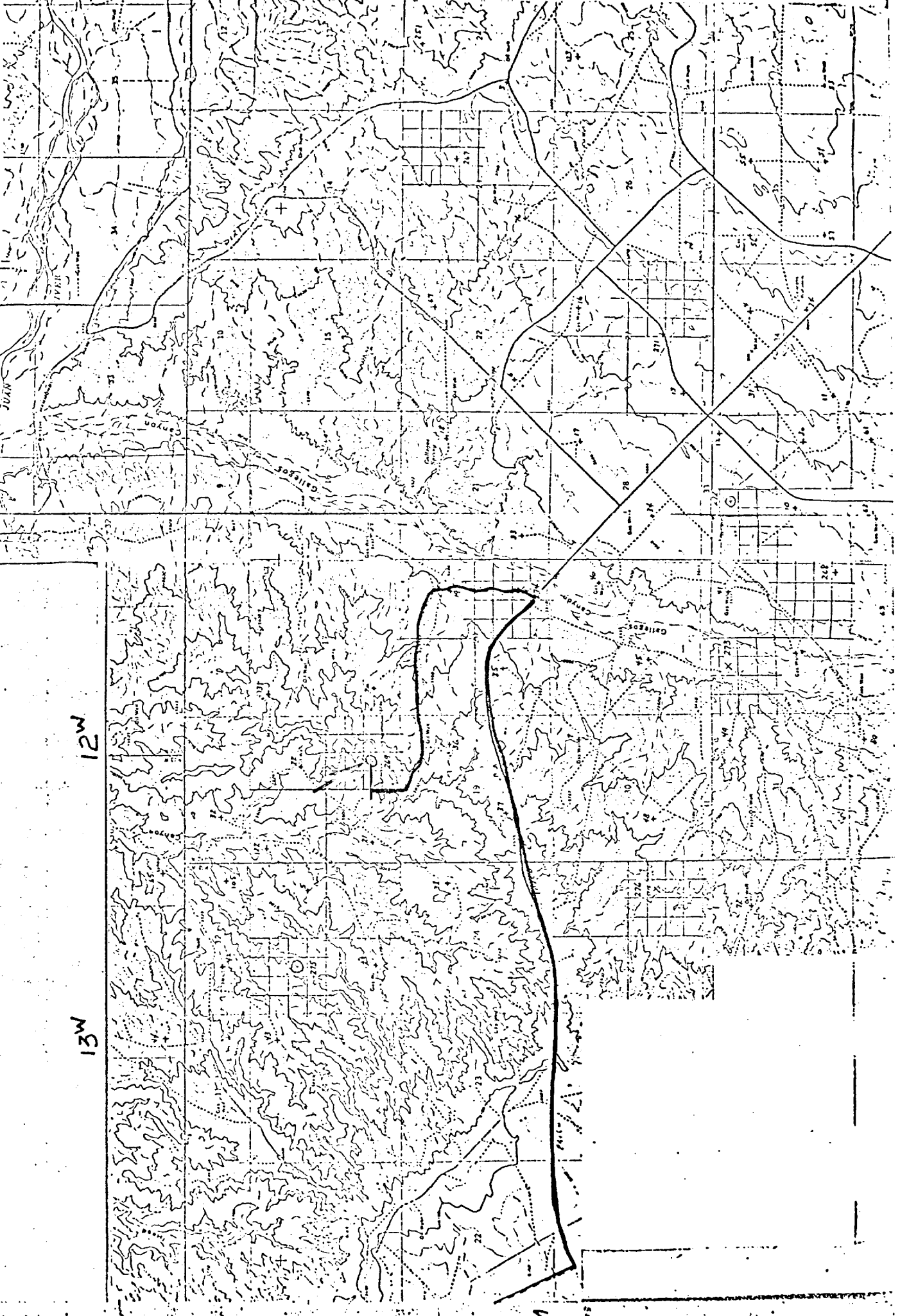
29<sup>N</sup>

28<sup>N</sup>

12<sup>W</sup>

13<sup>W</sup>

Route  
#371  
TO  
FARMINGTON





Attachment #3

Energy Reserves Group, Inc.  
GCU-PC # 269  
790' FS & 1580' FE Sec 16-28N-12W  
San Juan County, New Mexico

