

UNITED STATES  
DEPARTMENT OF THE INTERIOR  
GEOLOGICAL SURVEY

30-045-22240  
5. LEASE DESIGNATION AND SERIAL NO.

APPLICATION FOR PERMIT TO DRILL, DEEPEN, OR PLUG BACK

1a. TYPE OF WORK

DRILL ☒

DEEPEN ☐

PLUG BACK ☐

b. TYPE OF WELL

OIL WELL ☐

GAS WELL ☒

OTHER

SINGLE ZONE ☐

MULTIPLE ZONE ☐

2. NAME OF OPERATOR

Energy Reserves Group, Inc.

3. ADDRESS OF OPERATOR

Box 3280, Casper, Wyoming 82602

4. LOCATION OF WELL (Report location clearly and in accordance with any State requirements.)\*

At surface

1100'FNL, 2200'FWL (SE NE NW)

At proposed prod. zone

14. DISTANCE IN MILES AND DIRECTION FROM NEAREST TOWN OR POST OFFICE\*

6 miles East and 8 miles south of Farmington

15. DISTANCE FROM PROPOSED\*

LOCATION TO NEAREST PROPERTY OR LEASE LINE, FT.  
(Also to nearest drlg. unit line, if any)

NA

16. NO. OF ACRES IN LEASE

Unitized

18. DISTANCE FROM PROPOSED LOCATION\*

TO NEAREST WELL, DRILLING, COMPLETED, OR APPLIED FOR, ON THIS LEASE, FT.

1400'

19. PROPOSED DEPTH

1440'

21. ELEVATIONS (Show whether DF, RT, GR, etc.)

5680' GRD

23.

PROPOSED CASING AND CEMENTING PROGRAM

SIZE OF HOLE	SIZE OF CASING	WEIGHT PER FOOT	SETTING DEPTH	QUANTITY OF CEMENT
9 7/8"	7"	17#	100'	50 sks
6 1/2"	4 1/2"	9.5#	1440'	90 sks

Energy Reserves Group, Inc. proposes to drill above well with rotary tools from surface to TD. The anticipated zone of completion is the Pictured Cliffs formation.

No cores or DST's are planned. Copies of all logs run will be furnished upon completion of the well. Copies of the location plat are attached. The estimated tops are as follows :

Ojo Alamo	125'
Kirtland	225'
Pictured Cliffs ss	1340'
TD	1440'

A series 600 or 900 BOP will be used while drilling this well.

The gas is dedicated

IN ABOVE SPACE DESCRIBE PROPOSED PROGRAM. If proposal is to deepen or plug back, give data on present productive zone and proposed new productive zone. If proposal is to drill or deepen directionally, give pertinent data on subsurface locations and measured and true vertical depths. Give blowout preventer program, if any.

24.

SIGNED

*Hein B. Barner*

TITLE

RMD Production Engineer

DATE

October 28, 1976

(This space for Federal or State office use)

PERMIT NO.

APPROVAL DATE

RECEIVED

APPROVED BY

TITLE

DATE

CONDITIONS OF APPROVAL, IF ANY:

NOV 2 1976

*adaf*

\*See Instructions On Reverse Side

All distances must be from the outer boundaries of the Section.

Effective 1-1-63

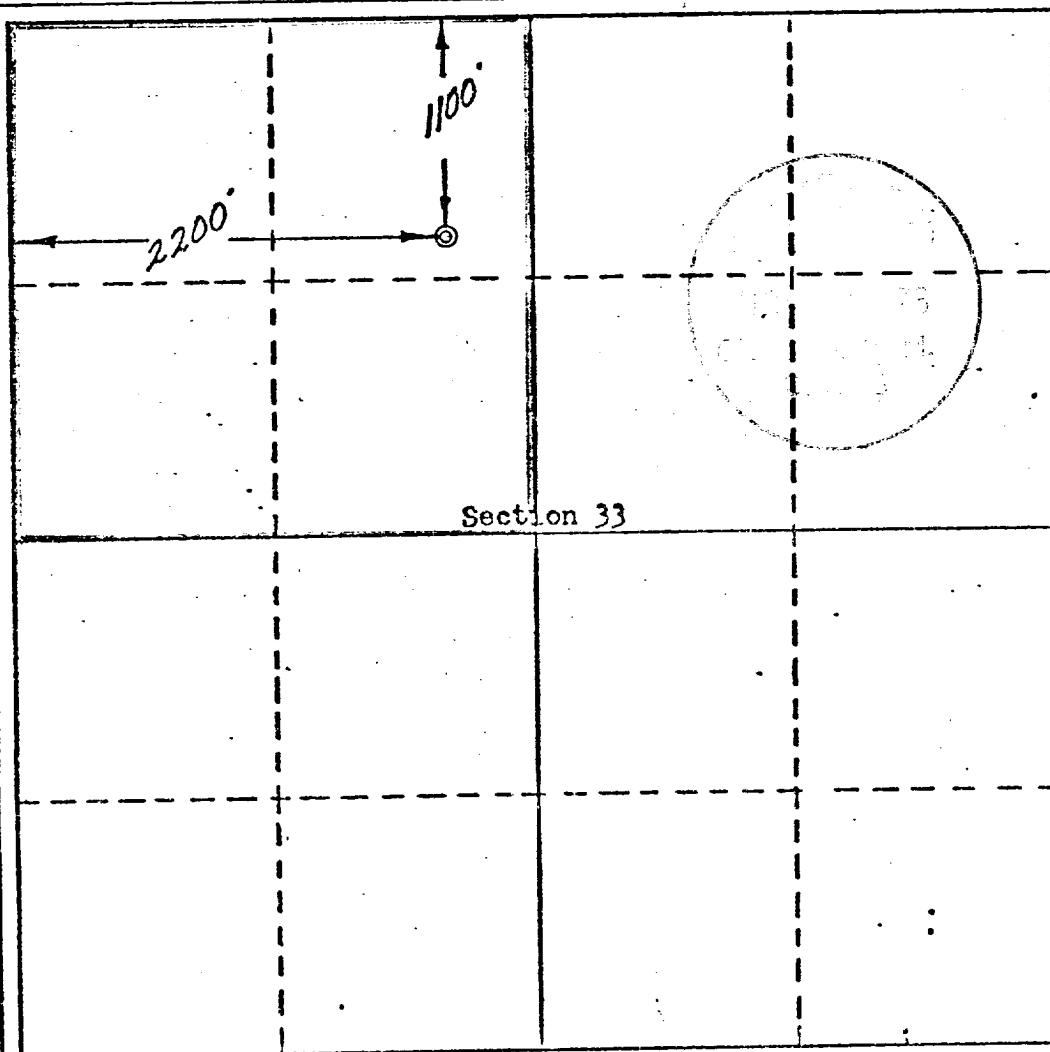
Operator: <b>Energy Reserves Group, Inc.</b>			Lease <b>Callegos Canyon Unit-</b>		Well No. <b>272</b>
Unit Letter <b>C</b>	Section <b>33</b>	Township <b>28 North</b>	Range <b>12 West</b>	County <b>San Juan</b>	
Actual Footage Location of Well: <b>1100</b> feet from the <b>North</b> line and <b>2200</b> feet from the <b>West</b> line					
Ground Level Elev: <b>5680</b>	Producing Formation <b>Pictured Cliffs</b>		Pool <i>West</i> <b>Kutz Pictured Cliffs</b>		Dedicated Acreage: <b>160</b> Acres

1. Outline the acreage dedicated to the subject well by colored pencil or hachure marks on the plat below.
2. If more than one lease is dedicated to the well, outline each and identify the ownership thereof (both as to working interest and royalty).
3. If more than one lease of different ownership is dedicated to the well, have the interests of all owners been consolidated by communitization, unitization, force-pooling, etc?

☐ Yes ☐ No If answer is "yes," type of consolidation \_\_\_\_\_

If answer is "no," list the owners and tract descriptions which have actually been consolidated. (Use reverse side of this form if necessary.) \_\_\_\_\_

No allowable will be assigned to the well until all interests have been consolidated (by communitization, unitization, forced-pooling, or otherwise) or until a non-standard unit, eliminating such interests, has been approved by the Commission.



#### CERTIFICATION

I hereby certify that the information contained herein is true and complete to the best of my knowledge and belief.

*Dean B. Barnes*

Name  
**Dean Barnes**

Position  
**RDM Production Engineer**

Company  
**Energy Reserves Group, Inc**

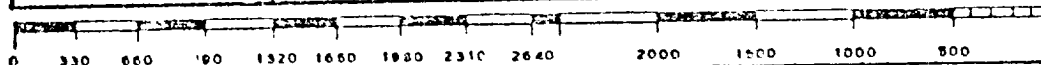
Date  
**10-28-76**

I hereby certify that the well location shown on this plat was plotted from field notes of actual surveys made by me or under my supervision, and that the same is true and correct to the best of my knowledge and belief.

Date Surveyed:  
**October 14, 1976**

Registered Professional Engineer and  
Lead Surveyor

*[Signature]*  
Certificate No. **3084**



Attachment with Form 9 - 331 C.

1. The geologic name of this surface formation is the Nacimiento.
2. The estimated tops of the important geologic markers in this well are :

Ojo Alamo	125'
Kirtland	225'
Pictured cliffs ss	1340'
TD	1440'
3. It is anticipated that the Pictured Cliffs formation will be gas bearing.
4. The proposed casing program is as follows :  
Set 7" 17# used casing at 100' + and cement back to surface with 50 sks cement.  
Set 4½", 9,5# secondhand casing at 1440' + (in a 6½" hole) and cement with 90 sks cement.  
Estimated cement top at 840' ±.
5. Pressure control equipment consists of the following :  
A Shaffer type - double ram BOP - hydraulically operated - 10" 600 or 900 series. The BOP will be pressure tested to 400 psi after installation and prior to drilling out from under surface casing. See attachment # 1.
6. Well is to be drilled with gel mud plus required additives for hole conditions and formations to be drilled. Normally, about 30-40 sacks of gel will be on location at any one time. There is no need for weighting material.
7. Auxiliary equipment - a float at the bit and a full opening floor valve to stab into the drill pipe.
8. No coring is planned. No DST's are planned. It is planned to run only the IES log from TD to base of surface casing.
9. No abnormal pressures or temperatures are anticipated. H<sub>2</sub>S is not a potential problem in this area.
10. It is planned to commence drilling operations soon after regulatory approval has been received. It is planned to drill this well along with about ten (10) others yet this year. It is estimated it will take 6 days to drill and log this well.

NTL-6

1. Existing Roads :

- a. See attachment #2
- b. Well location is six miles east and eight miles south of Farmington.
- c. Covered in a. and b.
- d. Not applicable - development well.
- e. See attachment #2
- f. Existing roads are in good condition.  
No improvement or maintenance required.

2. Planned Access Roads :

It will not be necessary to construct access road. Location is  $\frac{1}{4}$  mile from paved road.  
(1) Width of driving area will be limited to 16'±.  
(2) Very flat.  
(3)(4)(5)(6)(7) None required.

3. Location of Existing Wells :

Wells indicated on Attachment #2 are producing wells operated by Energy Reserves Group, Inc.

4. Location of Existing and/or proposed Facilities :

- a. (1) None
- (2) At each well
- (3) None
- (4) El Paso has gathering lines to each well.
- (5) None
- (6) None

1. If well is productive El Paso will hook up

NTL-6

9. Well site Layout :

- (1) See attachment #3
- (2) See attachment #4
- (3) See attachment #4
- (4) It is not planned to line pit.

10. Plans for Restoration of Surface :

As soon as pit is dried up it will be filled in and the surface leveled and contoured to surrounding terrain.

11. Other Information :

- (1) Topography at well site and access road is very flat. Soil is very sandy.
- (2) Maize crops are grown on lands contiguous to location and access roads. Area is irrigated.
- (3) None.

12. Lessee's or Operator's representative :

Mr. T.C. Durham is the Foreman who will represent Energy Reserves Group, Inc. during our drilling and clean up operations in connection with this well. He lives in Farmington, New Mexico. His address and phone no's are as follows :

Home	- 1205 Camino Largo	ph. 505-325-7978
Office	- Box 977	ph. 505-327-1639
Contact	- Unit 539	ph. 505-325-1873

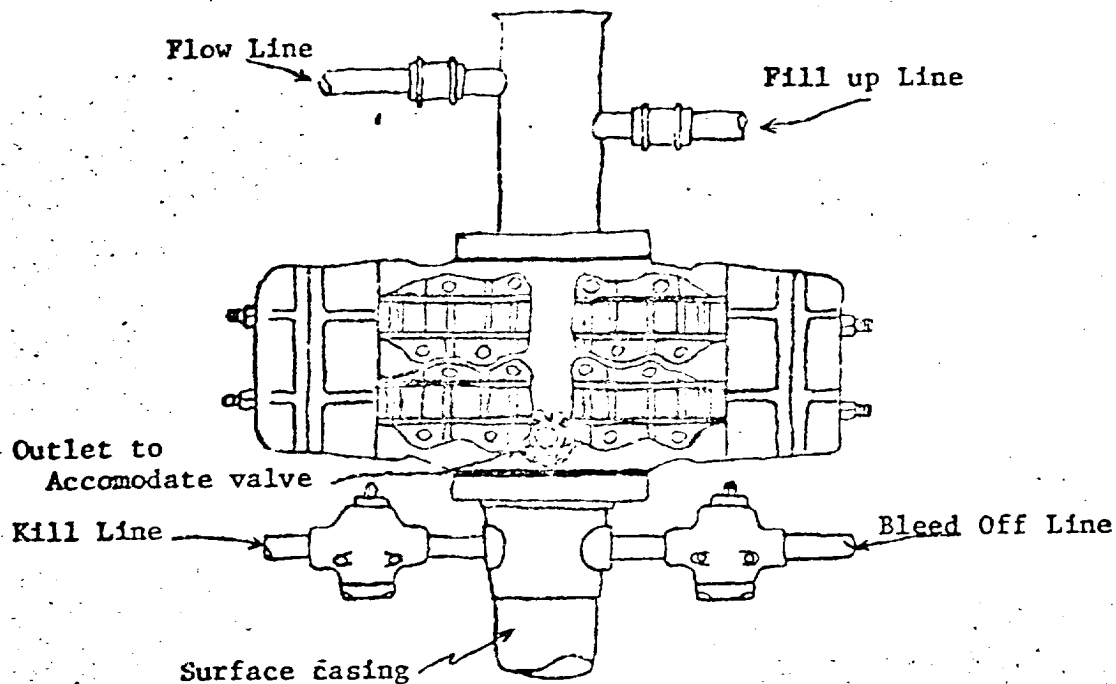
CERTIFICATION

I hereby certify that I, or persons under my direct supervision, have inspected the proposed drillsite and access route; that I am familiar with the conditions which presently exist; that the statements made in this plan are, to the best of my knowledge, true and correct; and, that the work associated with the operations proposed herein will be performed by \_\_\_\_\_

Frank Frank Jones  
and its contractors and subcontractors in conformity with this plan and the terms and conditions under which it is approved.

10-5-76  
Date

W. S. Jones Foreman  
Name and Title



Blowout preventer is Shaffer double hydraulic equipped with drill pipe rams in the top and blind rams in the bottom.

Blowout preventer closing unit is Kookey 30 gallon accumulator unit.

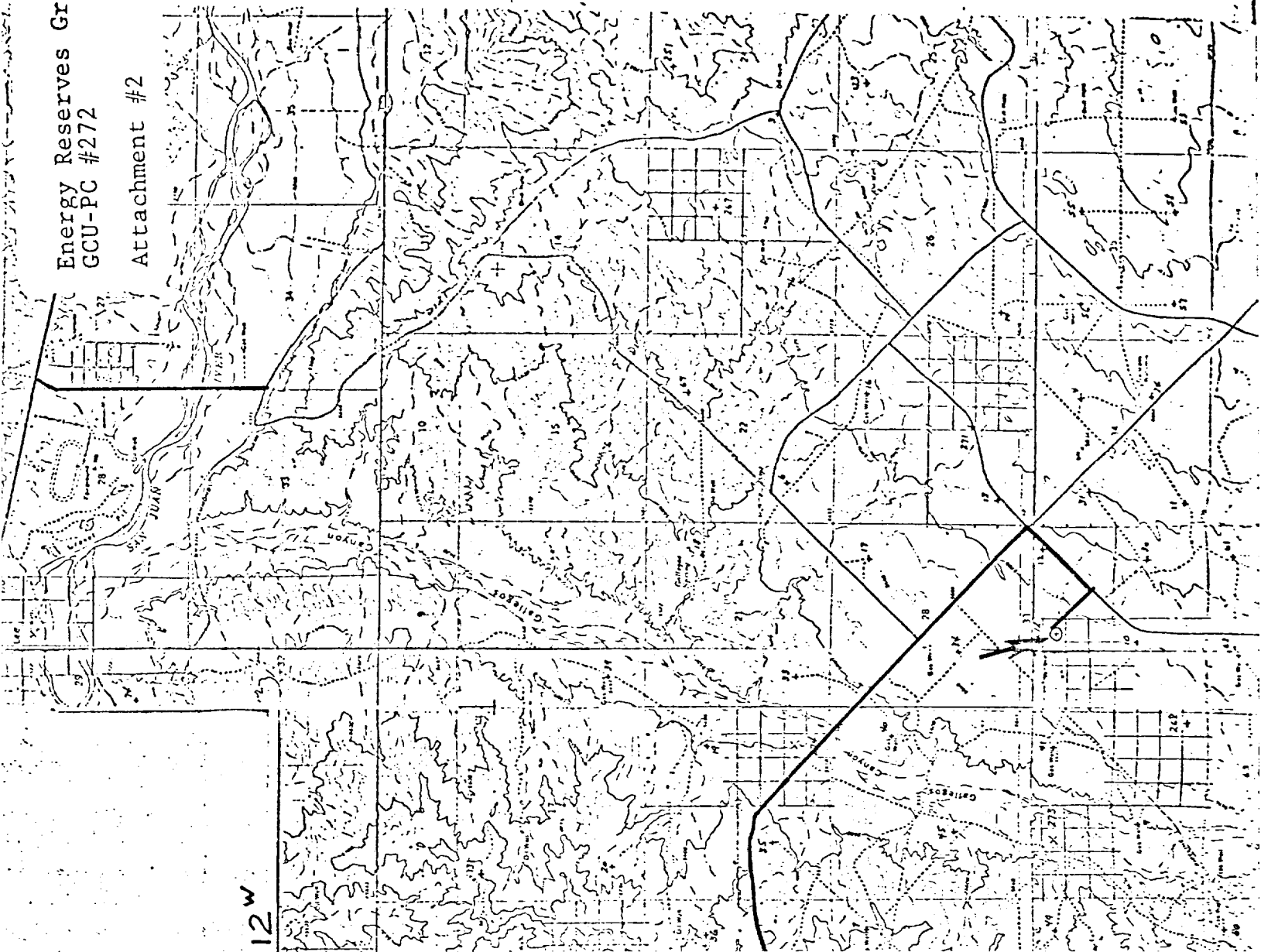
When choke manifold is used, it will be installed downstream from bleed off valve.

Kill line or bleed off line may be installed at flanged opening in blowout preventer.

29~

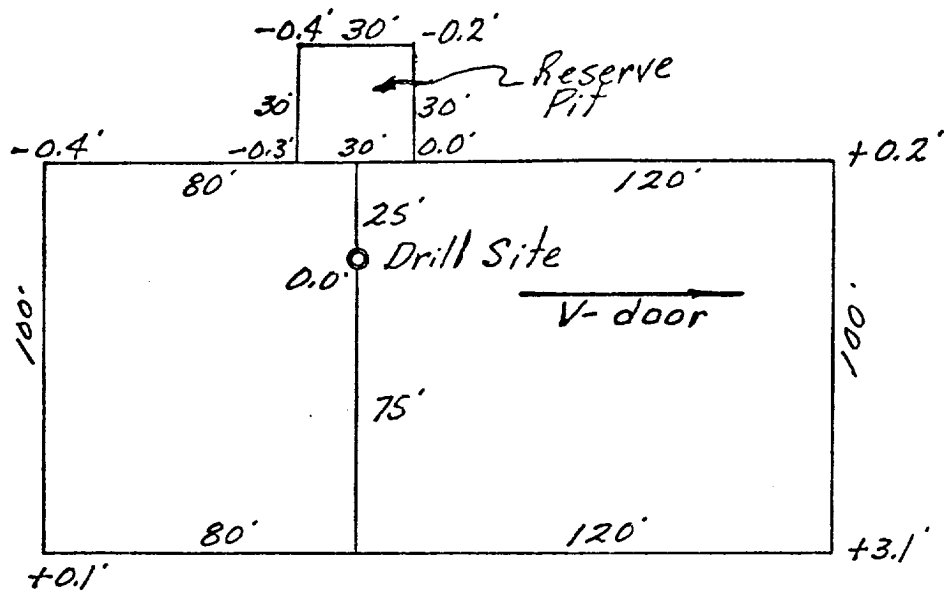
28~

12~

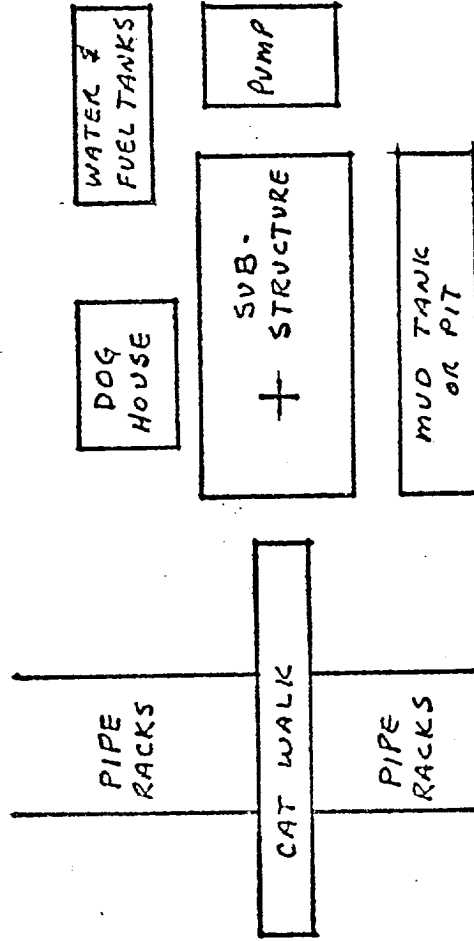




Energy Reserves Group, Inc.  
GCU-PC # 272  
1100' FN & 2200' FN Sec 33-28N-12W  
San Juan County, New Mexico



# RIG LAYOUT



TRASH  
PIT



RESERVE  
PIT