

UNITED STATES
DEPARTMENT OF THE INTERIOR
GEOLOGICAL SURVEY

APPLICATION FOR PERMIT TO DRILL, DEEPEN, OR PLUG BACK

1a. TYPE OF WORK
DRILL ☒ DEEPEN ☐ PLUG BACK ☐

b. TYPE OF WELL
OIL WELL ☐ GAS WELL ☒ OTHER ☐ SINGLE ZONE ☒ MULTIPLE ZONE ☐

2. NAME OF OPERATOR
R&G Drilling Company c/o Walsh Engr.&Prod.Corp.

3. ADDRESS OF OPERATOR
P.O. Box 254 Farmington, NM 87401

4. LOCATION OF WELL (Report location clearly and in accordance with any State requirements.)*
At surface 1190'FNL, 2050'FWL
At proposed prod. zone Same

14. DISTANCE IN MILES AND DIRECTION FROM NEAREST TOWN OR POST OFFICE
1190' FNL, 2050' FWL

15. DISTANCE FROM PROPOSED* LOCATION TO NEAREST PROPERTY OR LEASE LINE, FT. (Also to nearest drig. unit line, if any) 1190'

16. NO. OF ACRES IN LEASE -

17. NO. OF ACRES ASSIGNED TO THIS WELL 160

18. DISTANCE FROM PROPOSED LOCATION* TO NEAREST WELL, DRILLING, COMPLETED, OR APPLIED FOR, ON THIS LEASE, FT. -

19. PROPOSED DEPTH 1815'

20. ROTARY OR CABLE TOOLS Rotary

21. ELEVATIONS (Show whether DF, RT, GR, etc.) 5869'GR

22. APPROX. DATE WORK WILL START* 1-3-78

PROPOSED CASING AND CEMENTING PROGRAM				
SIZE OF HOLE	SIZE OF CASING	WEIGHT PER FOOT	SETTING DEPTH	QUANTITY OF CEMENT
12-1/4	8-5/8	24.0	100	125 sx.
7-7/8 or 6-3/4	4-1/2	10.50	1815	To be determined.

It is proposed to drill this well with rotary tools and using drilling mud as a circulating medium, through the Fruitland Formations. Possible productive intervals in the Fruitland Formations will be completed. Productive casing will be cemented in such a manner to protect all possible productive intervals and water sand.

Estimated Formation Tops

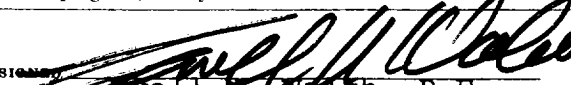
Ojo Alamo - 1705' Kirtland - 775' Fruitland - 1320'

The NW/4 of Section 33 will be dedicated to this well.

The natural gas from this well is committed.

FOR: R&G DRILLING COMPANY

IN ABOVE SPACE DESCRIBE PROPOSED PROGRAM: If proposal is to deepen or plug back, give data on present productive zone and proposed new productive zone. If proposal is to drill or deepen directionally, give pertinent data on subsurface locations and measured and true vertical depths. Give blowout preventer program, if any.

24.  President, Walsh Engineering & Production Corp. DATE 12-20-77
Ewell R. Walsh, P.E.
(This space for Federal or State office use)

PERMIT NO. _____ APPROVAL DATE _____

APPROVED BY _____ TITLE _____ DATE _____
CONDITIONS OF APPROVAL, IF ANY:

NEW MEXICO OIL CONSERVATION COMMISSION
WELL LOCATION AND ACREAGE DEDICATION PLAT

Form C-102
Supersedes C-128
Effective 1-1-65

All distances must be from the outer boundaries of the Section.

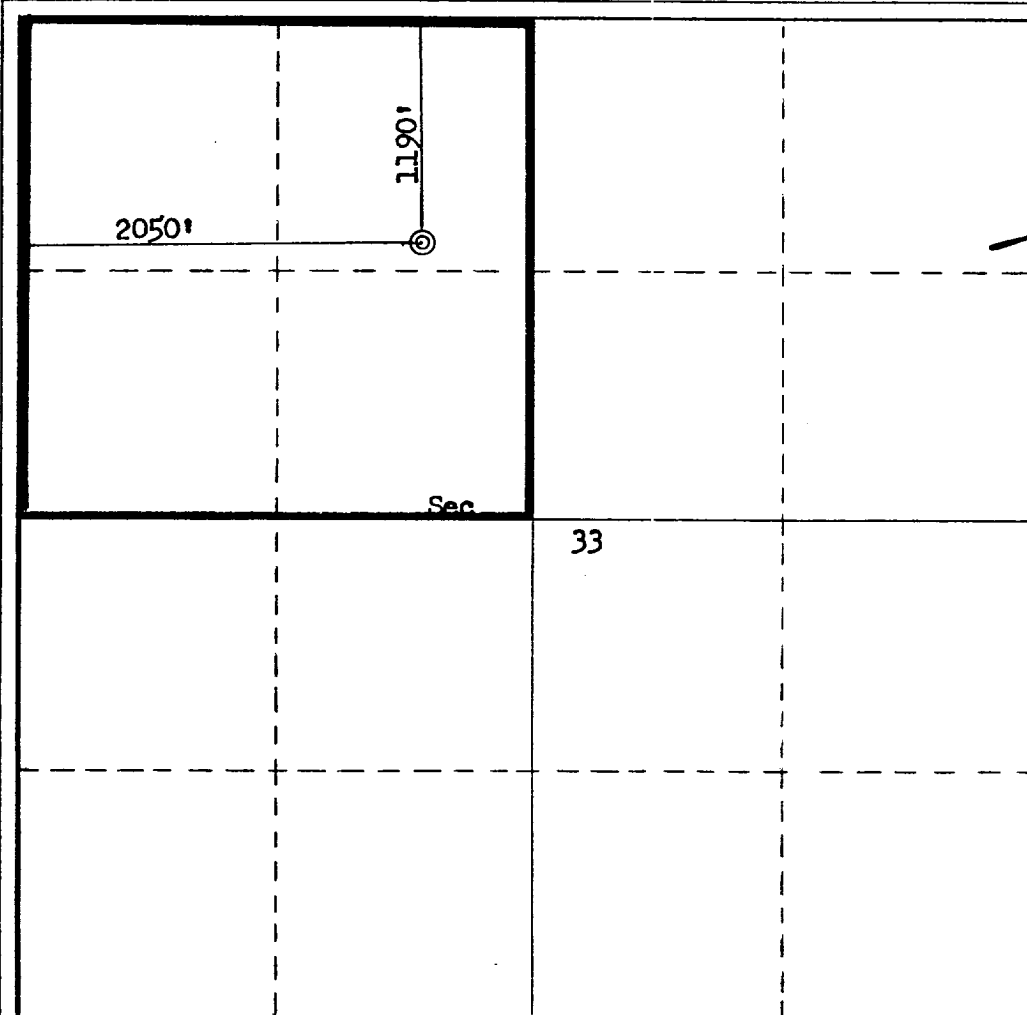
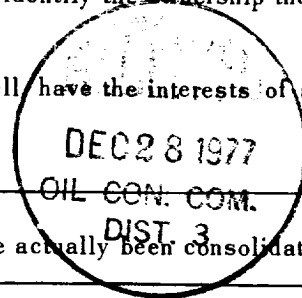
Operator R & G Drilling Company			Lease Krause		Well No. 65
Unit Letter C	Section 33	Township 28N	Range 11W	County San Juan	
Actual Footage Location of Well: 1190 feet from the North line and 2050 feet from the West line					
Ground Level Elev. 5869	Producing Formation Fruitland		Pool Kutz Fruitland ext	Dedicated Acreage: 160 Acres	

1. Outline the acreage dedicated to the subject well by colored pencil or hachure marks on the plat below.
2. If more than one lease is dedicated to the well, outline each and identify the ownership thereof (both as to working interest and royalty).
3. If more than one lease of different ownership is dedicated to the well, have the interests of all owners been consolidated by communitization, unitization, force-pooling, etc?

☐ Yes ☐ No If answer is "yes," type of consolidation _____

If answer is "no," list the owners and tract descriptions which have actually been consolidated. (Use reverse side of this form if necessary.) _____

No allowable will be assigned to the well until all interests have been consolidated (by communitization, unitization, forced-pooling, or otherwise) or until a non-standard unit, eliminating such interests, has been approved by the Commission.



CERTIFICATION

I hereby certify that the information contained herein is true and complete to the best of my knowledge and belief.

For: **R & G Drilling Co**

[Signature]

Ewell N. Walsh, P.E.

Position
President

Company
Walsh Engr. & Prod. Corp.

Date
12-20-77

I hereby certify that the well location shown on this plat was plotted from field notes of actual surveys made by me or under my supervision, and that the same is true and correct to the best of my knowledge and belief.

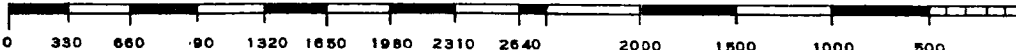
Date Surveyed
August 31, 1977

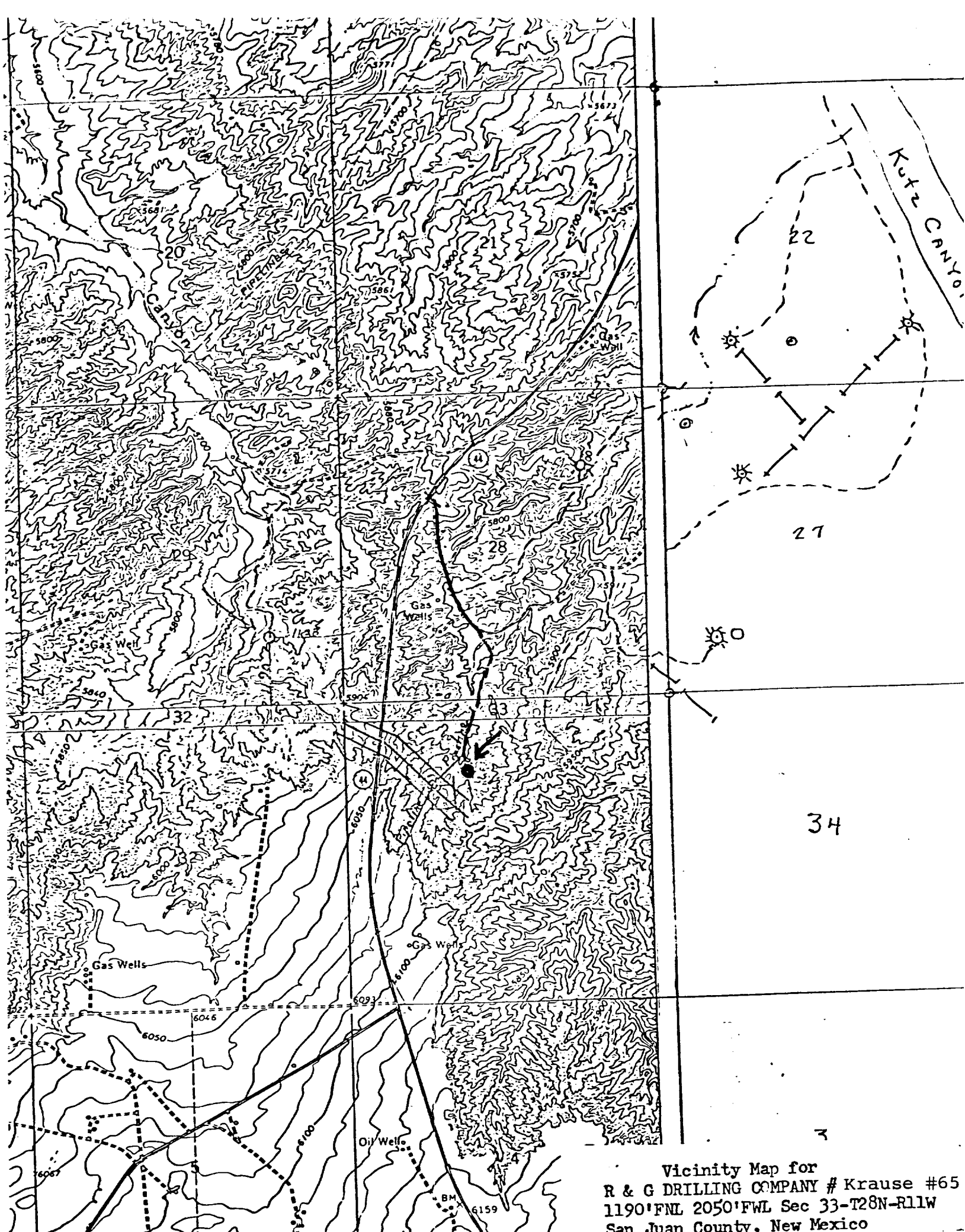
Registered Professional Engineer and/or Land Surveyor

[Signature]
Fred B. Kerr, Jr.

Certificate No.

3950





Vicinity Map for
R & G DRILLING COMPANY # Krause #65
1190'FNL 2050'FWL Sec 33-T28N-R11W
San Juan County, New Mexico

DEVELOPMENT PLAN

R&G DRILLING COMPANY

KRAUSE NO. 65

1190'FNL, 2050'FWL, Section 33-T28N-R11W

San Juan County, New Mexico

1. Existing roads shown on attached plat.
2. Planned access from existing road is approximately 2000' to new location.
3. Location - See Above
4. No additional well is planned on this lease at this time.
5. Production equipment or storage facilities proposed for the well will be installed on location.
6. Water will be obtained from the San Juan River in the NW/4 Section 27-T29N-R11W
7. Waste materials will be buried on location or in reserve pit.
8. No permanent camp is planned. A trailer house will be used on location during drilling process.
9. No airstrip proposed.
10. See attached plat for layout.
11. Pits will be filled, location cleaned up, and area not in use for producing well will be reseeded.

12. Lessee's or operator's representative.


Ewell N. Walsh: 325-8203; Radio Dispatch 325-1873, Car 620.
Address: P. O. Box 254, Farmington, New Mexico 87401

13: CERTIFICATION:

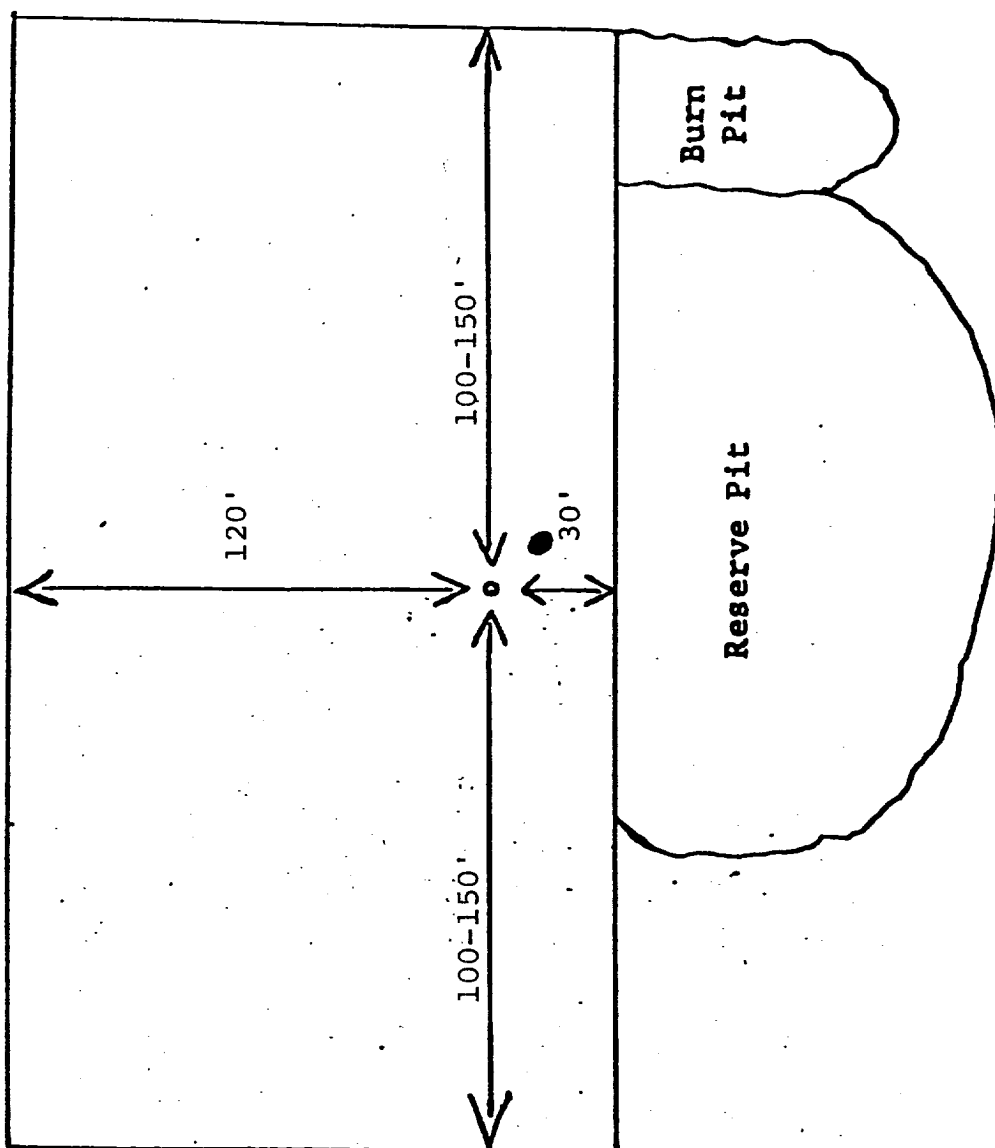
I hereby certify that I, or persons under my direct supervision, have inspected the proposed drillsite and access route; that I am familiar with the conditions which presently exist; that the statements made in this plan are, to the best of my knowledge, true and correct; and, that the work associated with the operations proposed herein will be performed by: _____

R&G Drilling Company

and its contractors and subcontractors in conformity with this plan and the terms and conditions under which it is approved.


Ewell N. Walsh, P.E., President,
Walsh Engineering & Production
Corporation

LOCATION LAYOUT
R&G DRILLING COMPANY
KRAUSE NO. 65
1190'FNL, 2050'FWL, Section 33-T28N-R11W
San Juan County, New Mexico



R&G DRILLING COMPANY
KRAUSE NO. 65
1190'FNL, 2050'FWL, Section 33-T28N-R11W
San Juan County, New Mexico

Seven Point Well Control Program

1. Surface Casing.
See Application for Permit to Drill.
2. Spools and Flanges
 - A. Surface Casing - Scwd. Series 600, 2000 psi W.P.
 - B. Production, Scwd. Series 600, 2000 psi W.P.
 - C. Tubing Head - Series 600, 2000 psi W.P.
3. Intermediate Casing.
None
4. Blowout Preventers
Production Hole - 8", 2000 psi
Fill, kill and choke manifold - 5000 psi W.P.
5. Addition Equipment (If necessary)
 - A. Kelly Cock
 - B. Bit Float
 - C. Degasser
 - D. Pit Level Indicator
 - E. Sub with Valve for Drill Pipe.
6. Anticipated Bottom Hole Pressure.
700 psi. Current mud program is for 9.2 lb./gal mud with hydrostatic head of psi at feet. Mud weight will be increased if necessary for higher pressures.
7. Drilling Fluid.
Native mud with gel - chemical for logging.