

UNITED STATES  
DEPARTMENT OF THE INTERIOR  
GEOLOGICAL SURVEY

## APPLICATION FOR PERMIT TO DRILL, DEEPEN, OR PLUG BACK

## 1a. TYPE OF WORK

DRILL ☒DEEPEN ☐PLUG BACK ☐

## b. TYPE OF WELL

OIL  
WELL ☐GAS  
WELL ☒

OTHER

SINGLE  
ZONE ☒MULTIPLE  
ZONE ☐

## 2. NAME OF OPERATOR

SUPRON ENERGY CORPORATION

## 3. ADDRESS OF OPERATOR

P.O. Box 808, Farmington, New Mexico 87401

## 4. LOCATION OF WELL (Report location clearly and in accordance with any State requirements.)\*

At surface  
1585 ft./North line and 1560 ft./West lineAt proposed prod. zone  
Same as above.

## 14. DISTANCE IN MILES AND DIRECTION FROM NEAREST TOWN OR POST OFFICE\*

4 miles south of Bloomfield, New Mexico

## 15. DISTANCE FROM PROPOSED\*

LOCATION TO NEAREST  
PROPERTY OR LEASE LINE, FT. 1560 ft.  
(Also to nearest drlg. unit line, if any) 1560 ft.

## 16. NO. OF ACRES IN LEASE

1894.08

18. DISTANCE FROM PROPOSED LOCATION\*  
TO NEAREST WELL, DRILLING, COMPLETED,  
OR APPLIED FOR, ON THIS LEASE, FT.

2895 ft.

## 19. PROPOSED DEPTH

6440

## 21. ELEVATIONS (Show whether DF, RT, GR, etc.)

5759 Gr.

## 23.

## PROPOSED CASING AND CEMENTING PROGRAM

SIZE OF HOLE	SIZE OF CASING	WEIGHT PER FOOT	SETTING DEPTH	QUANTITY OF CEMENT
12-1/4"	8-5/8"	24.00	250 ft.	175 sx
7-7/8"	4-1/2"	10.50	6440 ft.	1185 sx

The surface hole will be drilled to +250 ft. Casing will be run and cemented with the cement being circulated back to the surface. The surface casing will be pressure tested. The well will be drilled to T.D. of approx. 6440 ft. using a starch base mud as the circulating medium. Pipe will be run and cemented in three stages with the estimated cement top to be at approx. 250 ft. The pipe will be pressure tested then the Dakota zone will be perforated and sand water fraced to stimulate production. The well will then be cleaned up, tubing run to the top of the Dakota zone and the wellhead nipped down.

IN ABOVE SPACE DESCRIBE PROPOSED PROGRAM: If proposal is to deepen or plug back, give data on present productive zone and proposed new productive zone. If proposal is to drill or deepen directionally, give pertinent data on subsurface locations and measured and true vertical depths. Give blowout preventer program, if any.

## 24.

SIGNED

  
Rudy P. Motto

TITLE Area Superintendent

DATE May 2, 1980

(This space for Federal or State office use)

PERMIT NO.

APPROVAL DATE

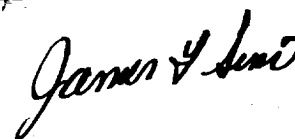
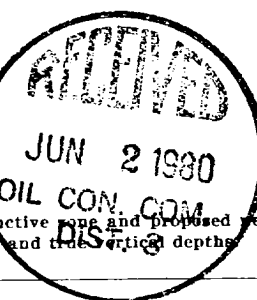
APPROVED BY

TITLE

DATE

CONDITIONS OF APPROVAL, IF ANY:

NMOCC  
DRILLING OPERATIONS AUTHORIZED ARE  
SUBJECT TO COMPLIANCE WITH ATTACHED  
"GENERAL REQUIREMENTS"



All distances must be from the outer boundaries of the Section.

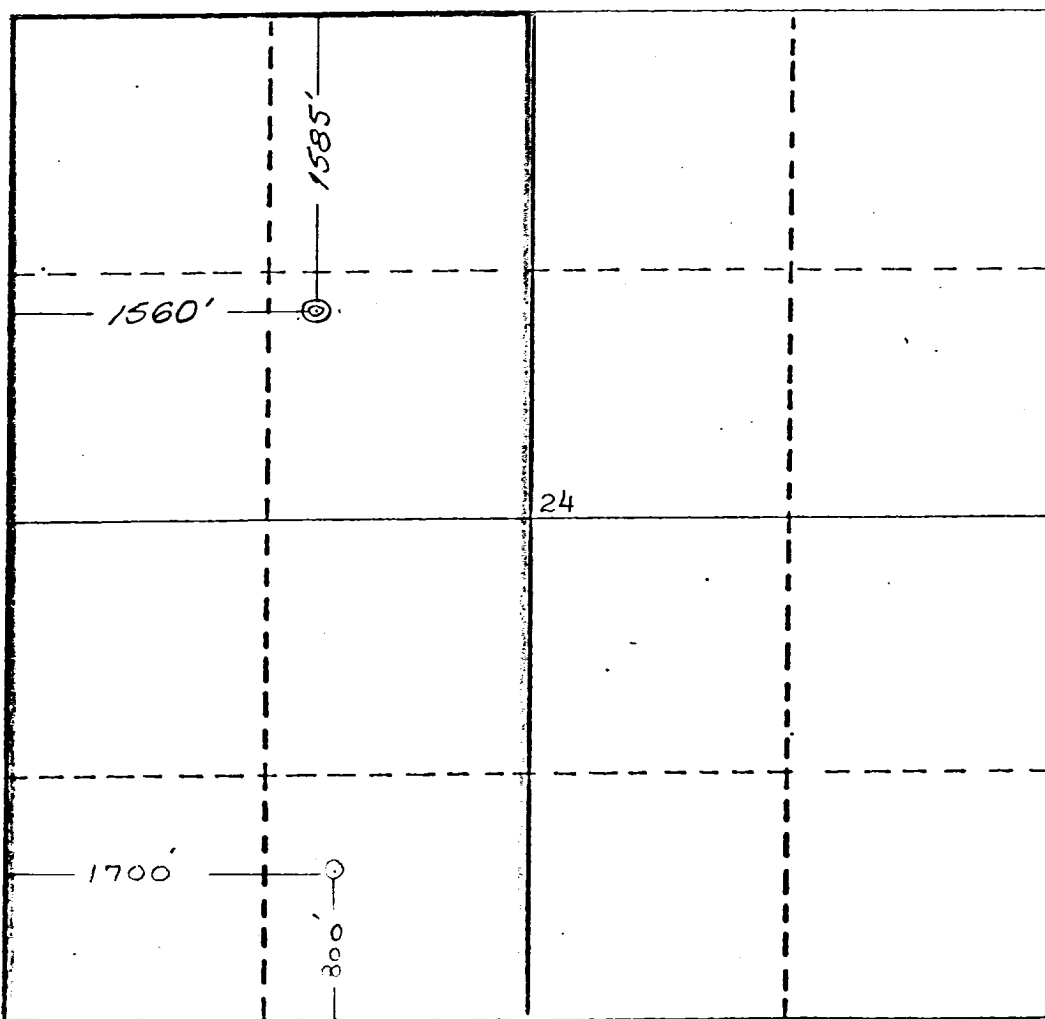
Operator <b>SUPRON ENERGY CORPORATION</b>		Lease <b>ANGEL PEAK "B"</b>		Well No. <b>25-E</b>
Unit Letter <b>F</b>	Section <b>24</b>	Township <b>28 NORTH</b>	Range <b>11 WEST</b>	County <b>SAN JUAN</b>
Actual Footage Location of Well: <b>1585</b> feet from the <b>NORTH</b> line and <b>1560</b> feet from the <b>WEST</b> line				
Ground Level Elev. <b>5759</b>	Producing Formation <b>Dakota</b>	Pool <b>Basin Dakota</b>	Dedicated Acreages <b>W<math>\frac{1}{2}</math> 320 Acres</b>	

1. Outline the acreage dedicated to the subject well by colored pencil or hatchure marks on the plat below.
2. If more than one lease is dedicated to the well, outline each and identify the ownership thereof (both as to working interest and royalty).
3. If more than one lease of different ownership is dedicated to the well, have the interests of all owners been consolidated by communitization, unitization, force-pooling, etc?

☐ Yes ☐ No If answer is "yes," type of consolidation \_\_\_\_\_

If answer is "no," list the owners and tract descriptions which have actually been consolidated. (Use reverse side of this form if necessary.) \_\_\_\_\_

No allowable will be assigned to the well until all interests have been consolidated (by communitization, unitization, forced-pooling, or otherwise) or until a non-standard unit, eliminating such interests, has been approved by the Division.



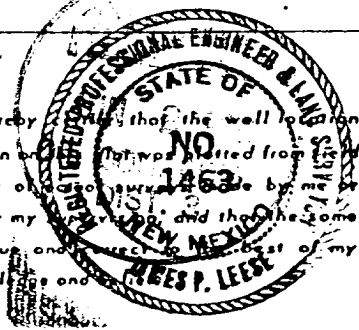
CERTIFICATION

I hereby certify that the information contained herein is true and complete to the best of my knowledge and belief.

*Lady R. Mott*

Name  
Area Superintendent  
Position  
Supron Energy Corporation  
Company  
March 6, 1980  
Date

I hereby certify that the well location shown on this plat was plotted from notes of a survey made by me or under my supervision and that the same is true and correct to the best of my knowledge and belief.



Date Surveyed  
February 21, 1980

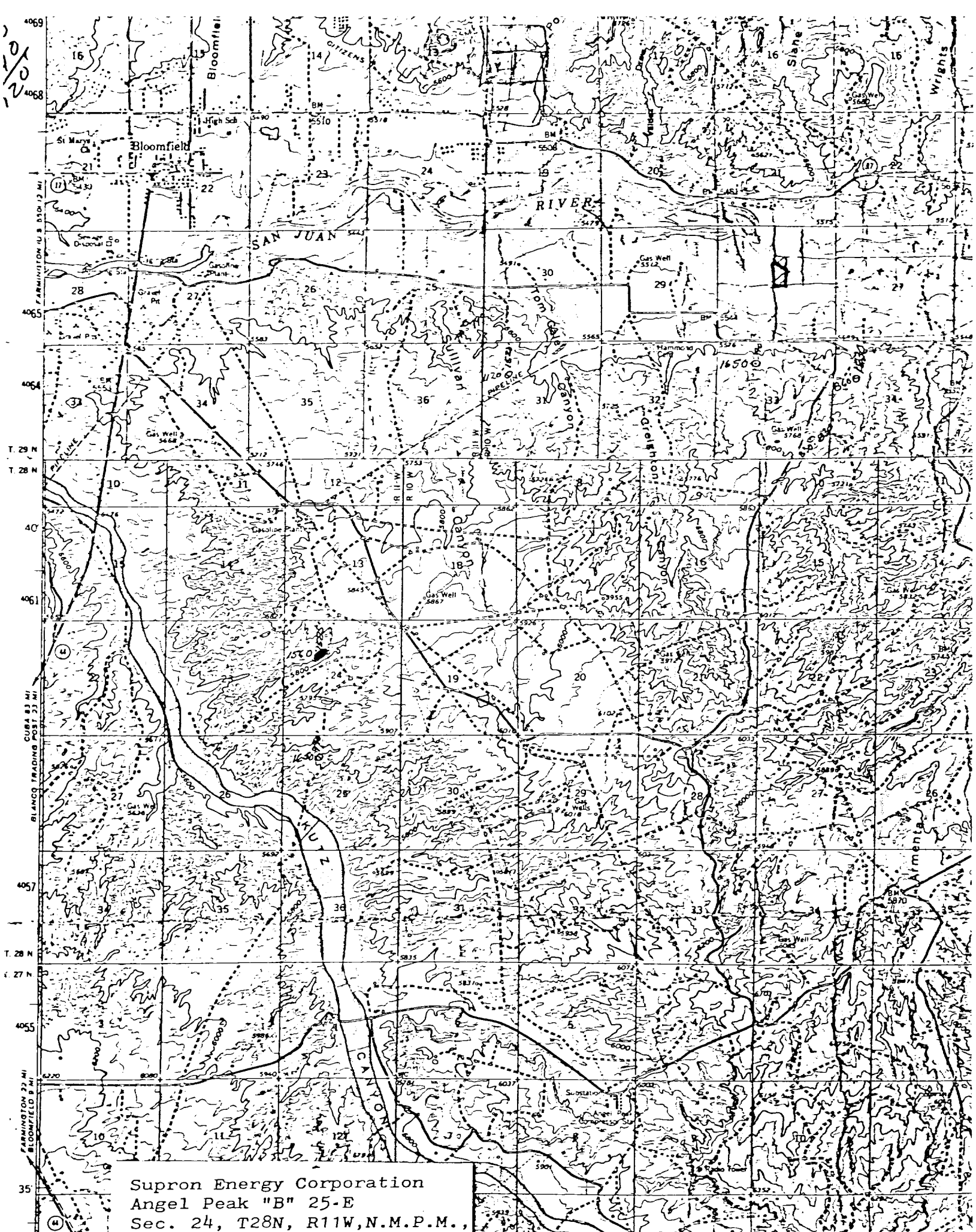
Registered Professional Engineer and/or Land Surveyor  
*James P. Leese*  
James P. Leese

Certificate No.  
1463

SUPRON ENERGY CORPORATION  
Angel Peak "B" No. 25-E  
NW ¼ Sec. 25, T-28N, R-11W, N.M.P.M.  
San Juan County, New Mexico

The following attachments are included with this application:

1. Topographical map showing the proposed location and access road.
2. Planned access road is 600 feet long and 80 feet wide approaching the location from the northeast. The road will follow the natural contours of the land and will have drainage facilities installed to meet the requirements of NTL-6. No extra surfacing materials will be used.
3. Map showing existing producing facilities and access roads.
4. Location of surface equipment if required.
5. Drilling and completion water will be obtained from the San Juan River.
6. All pits will be fenced and constructed in such a way as to prevent litter on the location.
7. We will dispose of all waste by placing it in the reserve pit and burying it when the well is completed.
8. There will be no camp at or near the well site.
9. There will be no air strip.
10. A plat is attached showing the location of the rig, mud tanks, reserve pit, burn pit and etc.
11. A letter of certification is attached. The operator representative for compliance purposes is Rudy D. Motto, Area Superintendent, P.O. Box 808, Farmington, New Mexico 87401. Phone (505) 325-3587.
12. After the well is completed, the location will be cleaned up and bladed. The reserve pit will be allowed to dry and then be filled and restored to its natural state.
13. The soil is sandy clay, the principal vegetation is juniper, greasewood, mormon tea, galleta, narrow leaf yucca, snakeweed, eriogonum sp. and bitterbrush.



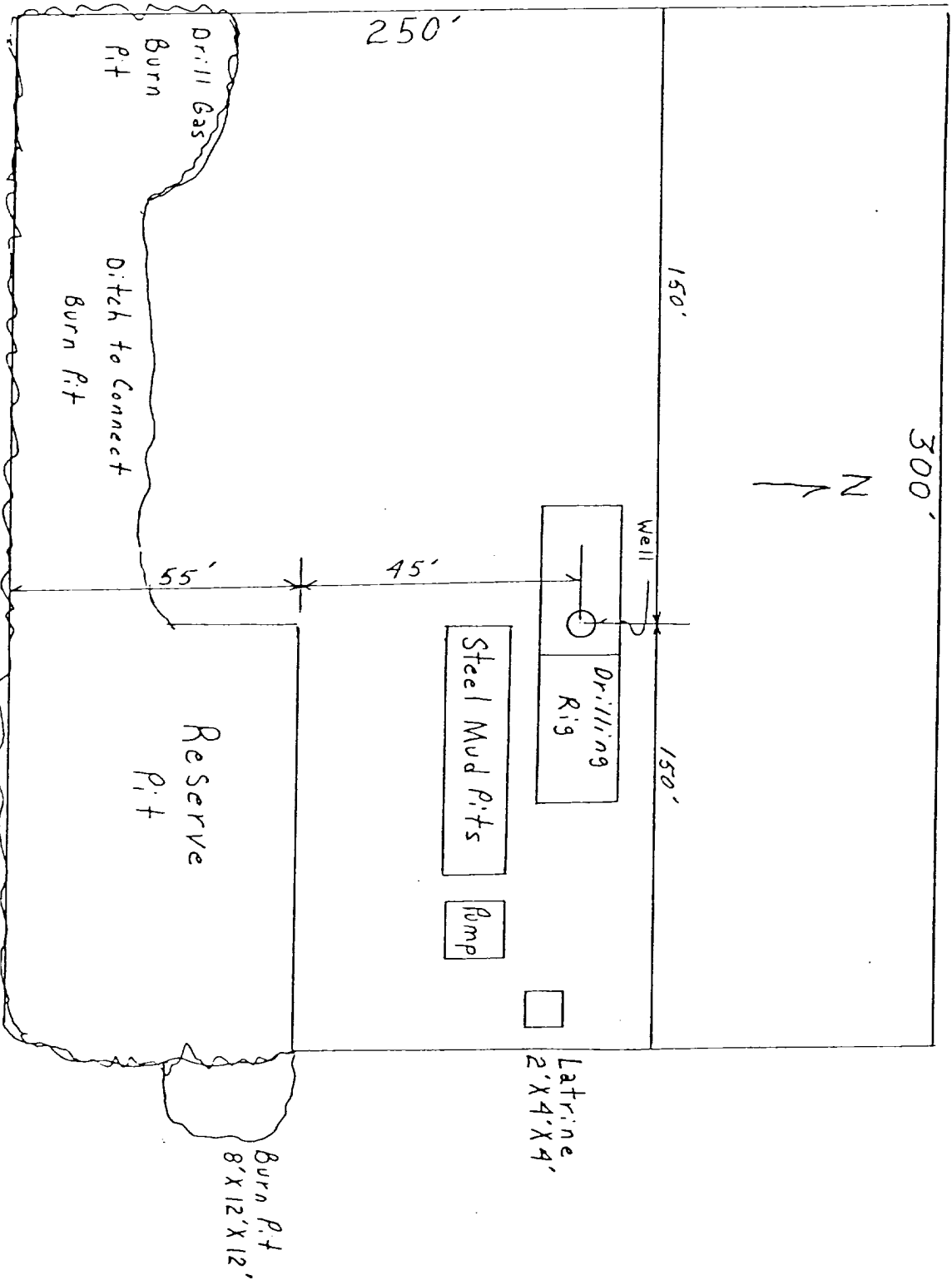
Supron Energy Corporation  
Angel Peak "B" 25-E  
Sec. 24, T.28N, R.11W, N.M.P.M.,

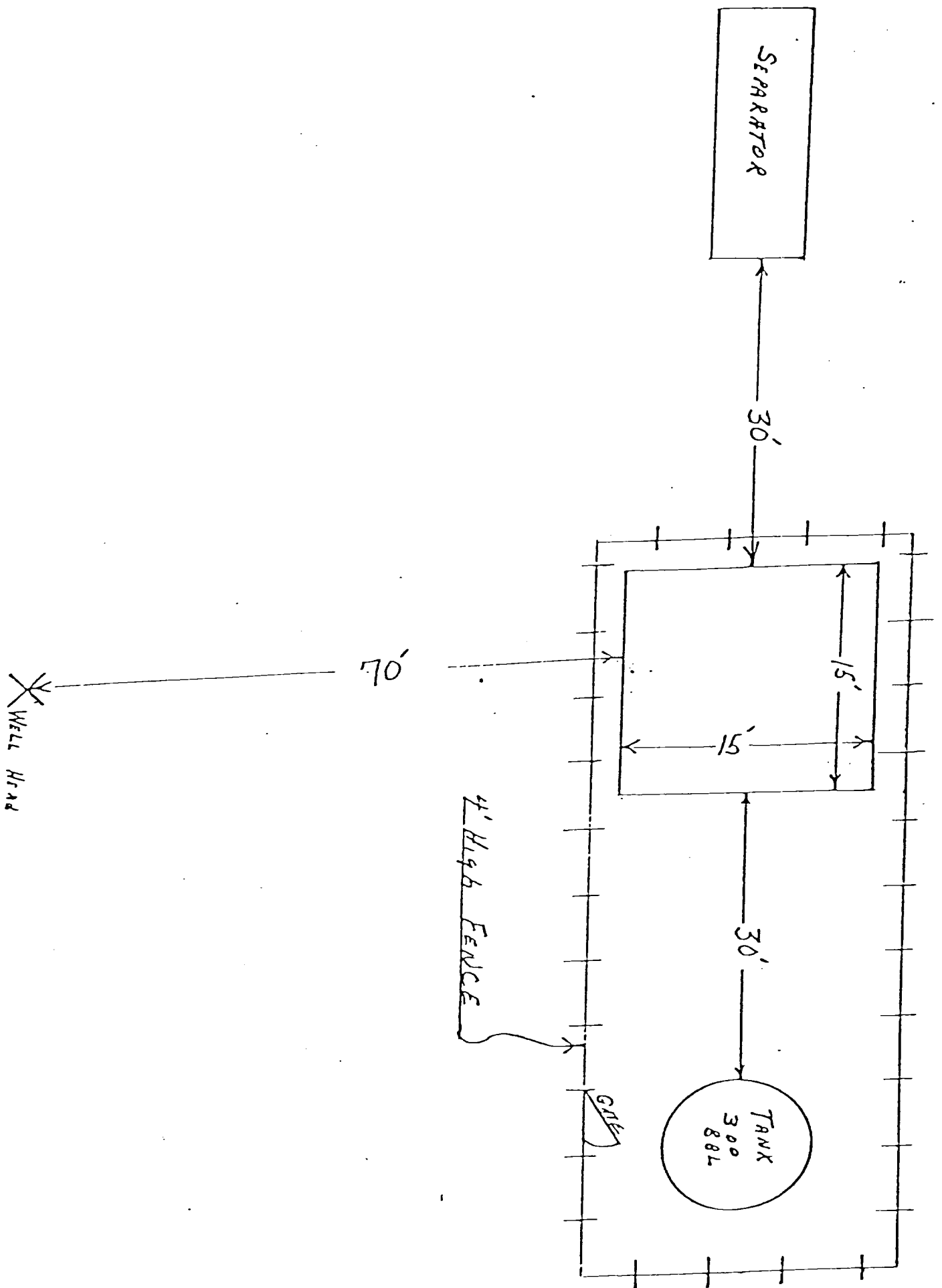
# LOCATION AND EQUIPMENT LAYOUT

SUPRON ENERGY CORPORATION

ANGEL PEAK "B" No. 25-E

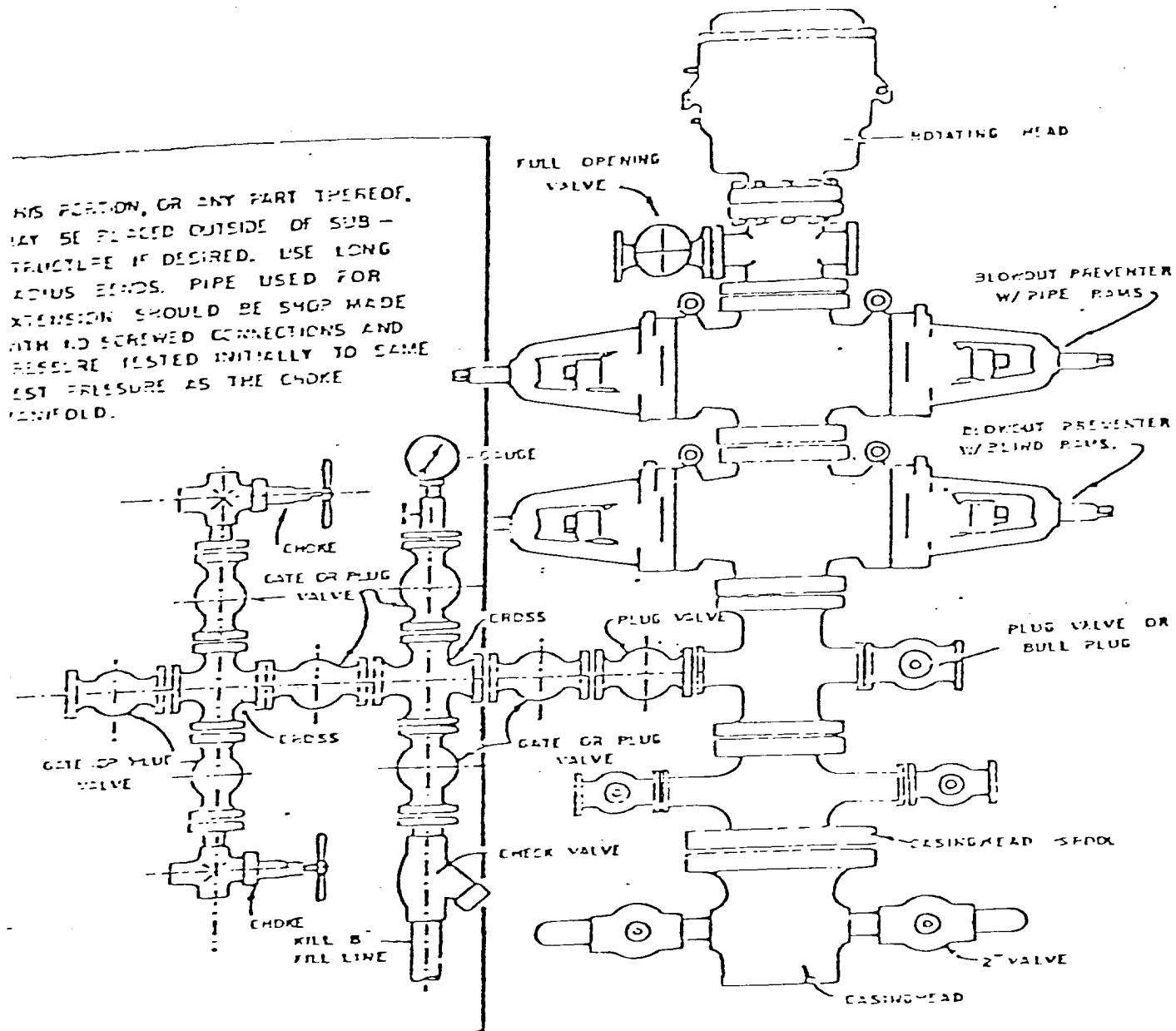
1585 feet from the North line and 1560 feet from the West line of Section 24, Township 28 North, Range 11 West, N.M.P.M., San Juan County, New Mexico.





Blowout Preventer will be tested daily and prior to drilling out with the results to be logged on the drillers report.

The B.O.P. and all valve and fittings are rated at 3000 psi working pressure, and hydraulically operated



BLOWOUT PREVENTER HOCKUP

SUPRON ENERGY CORPORATION  
Post Office Box 808  
FARMINGTON, NEW MEXICO 87401

I hereby certify that I, or persons under my direct supervision, have inspected the proposed drillsite and access route; that I am familiar with the conditions which presently exist; that the statements made in this plan are, to the best of my knowledge, true and correct; and, that the work associated with the operations proposed herein will be performed by SUPRON ENERGY CORPORATION and its contractors subcontractors in conformity with this plan and the terms and conditions under which it is approved.

SUPRON ENERGY CORPORATION



Rudy D. Motto  
Area Superintendent  
Phone: 325-3587



SUPRON ENERGY CORPORATION

ANGEL PEAK "B" No. 25-E  
NW ¼ Sec. 25, T-28N, R-11W, N.M.P.M.  
San Juan County, New Mexico

1. The Geologic name of the surface formation is, "Wasatch".
2. The estimated tops of important Geologic markers are:

A. Base of the Ojo Alamo	745 ft.
B. Kirtland	745 ft.
C. Fruitland	1433 ft.
D. Pictured Cliffs	1726 ft.
E. Chacra	2267 ft.
F. Cliff House	3265 ft.
G. Point Lookout	3882 ft.
H. Gallup	5288 ft.
I. Greenhorn	6167 ft.
J. Dakota	6440 ft.
3. The estimated depths at which anticipated water, oil or other mineral bearing formations are expected to be encountered are:

A. Ojo Alamo	745 ft.	Water
B. Kirtland	745 ft.	Water
C. Fruitland	1433 ft.	Water
D. Pictured Cliffs	1726 ft.	Gas
E. Chacra	2267 ft.	Gas
F. Cliff House	3265 ft.	Water
G. Point Lookout	3882 ft.	Water
H. Gallup	5288 ft.	Dry
I. Greenhorn	6167 ft.	Shale
J. Dakota	6440 ft.	Gas
4. The casing program is shown on form 9-331C and all casing is new.
5. The lessee's pressure control equipment schematics are attached, along with minimum specifications, testing procedures and frequencies.
6. The type, estimated volumes, and characteristics of the circulating medium are as follows:

A. 0 - 250 ft.	Natural mud
B. 250 - 6440 ft.	Permaloid non dispersed mud containing approx. 180 sx gel, 70 sx of permaloid and 20 sx of CMC.
7. The auxiliary equipment to be used will be floats at the bit and a sub on the floor with a full opening valve to be stabbed into the drill pipe when the kelly is not in the string.
8. The well is in an area which is partially developed; therefore we will not have a testing and coring program. The logging program is as follows:

A. E.S. Induction
B. Gamma Ray Density
C. Gamma Ray Correlation
D. Cement Bond Log
9. We do not expect to find any abnormal pressures, temperatures or hydrogen sulfide problems in this partially developed area.
10. The anticipated starting date for this well is July 10, 1980.