

UNITED STATES
DEPARTMENT OF THE INTERIOR
GEOLOGICAL SURVEY

APPLICATION FOR PERMIT TO DRILL, DEEPEN, OR PLUG BACK

1a. TYPE OF WORK

DRILL ☒DEEPEN ☐PLUG BACK ☐

b. TYPE OF WELL

OIL
WELL ☐GAS
WELL ☒OTHER ☐SINGLE
ZONE ☐MULTIPLE
ZONE ☒

2. NAME OF OPERATOR

Southland Royalty Company

3. ADDRESS OF OPERATOR

P. O. Drawer 570, Farmington, NM 87401

4. LOCATION OF WELL (Report location clearly and in accordance with any State regulations)

At surface

910' FNL & 1060' FEL
At proposed prod. zone

RECEIVED

APR 25 1980

U. S. GEOLOGICAL SURVEY
FARMINGTON, N. M.

5. LEASE DESIGNATION AND SERIAL NO.

SF-075794

6. IF INDIAN, ALLOTTEE OR TRIBE NAME

7. UNIT AGREEMENT NAME

8. FARM OR LEASE NAME

Hughes

9. WELL NO.

#2E

10. FIELD AND POOL, OR WILDCAT

Basin Dakota / Kutz Fruitland

11. SEC., T., R., M., OR BLK.
AND SURVEY OR AREA

Section 23, T28N, R11W

12. COUNTY OR PARISH

San Juan

13. STATE

New Mexico

14. DISTANCE IN MILES AND DIRECTION FROM NEAREST TOWN OR POST OFFICE*

Approximately 3 1/2 miles south of Bloomfield, NM

15. DISTANCE FROM PROPOSED*

LOCATION TO NEAREST
PROPERTY OR LEASE LINE, FT.
(Also to nearest drlg. unit line, if any)

910'

16. NO. OF ACRES IN LEASE

320

17. NO. OF ACRES ASSIGNED
TO THIS WELL

320

18. DISTANCE FROM PROPOSED LOCATION*
TO NEAREST WELL, DRILLING, COMPLETED,
OR APPLIED FOR, ON THIS LEASE, FT.

550'

19. PROPOSED DEPTH

6457'

20. ROTARY OR CABLE TOOLS

Rotary

21. ELEVATIONS (Show whether DF, RT, GR, etc.)

5774' GR

22. APPROX. DATE WORK WILL START*

September 15, 1980

23. PROPOSED CASING AND CEMENTING PROGRAM

SIZE OF HOLE	SIZE OF CASING	WEIGHT PER FOOT	SETTING DEPTH	QUANTITY OF CEMENT
12 1/4"	8 5/8"	24#	200'	140 sacks CIRCULATE
7 7/8"	5 1/2"	15.5#	6457'	172 sacks (stage one)
				300 sacks (stage two)
				324 sacks (stage three)

Surface formation is Nacimiento.

The top of the Fruitland sand is at 1514'.

The top of the Pictured Cliffs sand is at 1771'.

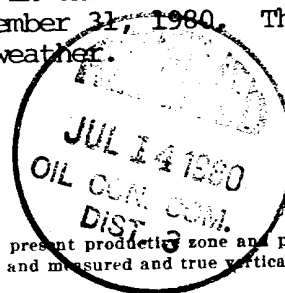
Fresh water mud will be used to drill from surface to total depth.

It is anticipated that an IES and GR-Density log will be run at total depth.

No abnormal pressures or poisonous gases are anticipated in this well.

It is expected that this well will be drilled before December 31, 1980. This depends on time required for approval, rig availability and the weather.

Gas is dedicated.



IN ABOVE SPACE DESCRIBE PROPOSED PROGRAM: If proposal is to deepen or plug back, give data on present productive zone and proposed new productive zone. If proposal is to drill or deepen directionally, give pertinent data on subsurface locations and measured and true vertical depths. Give blowout preventer program, if any.

24.

SIGNED

Curtis C. Parsons

TITLE District Engineer

DATE 4-18-80

(This space for Federal or State office use)

PERMIT NO.

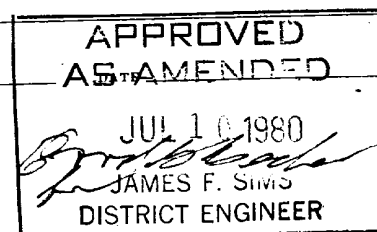
APPROVAL DATE

APPROVED BY

TITLE

CONDITIONS OF APPROVAL, IF ANY:

NMOCC



All distances must be from the outer boundaries of the Section

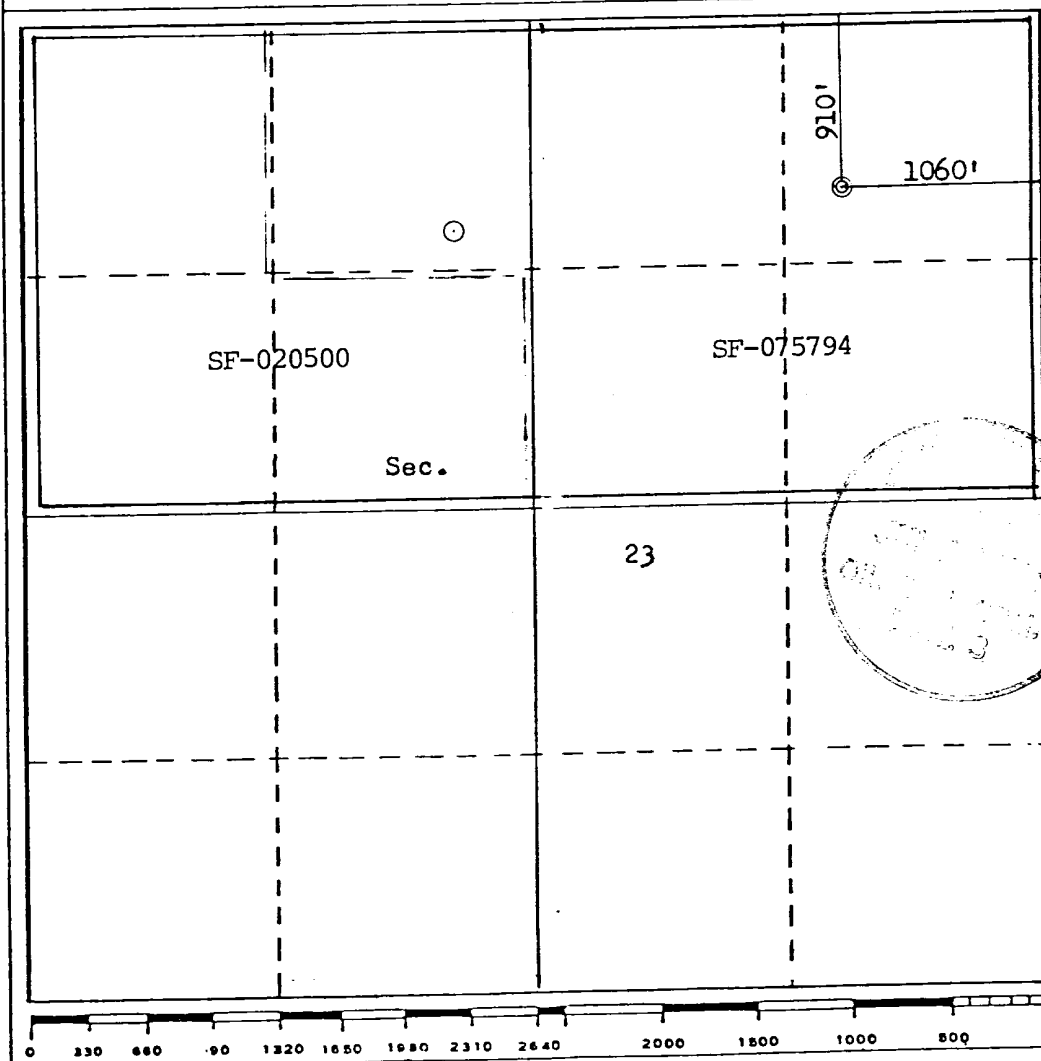
Operator SOUTHLAND ROYALTY COMPANY			Lease HUGHES		Well No. 2-E
Unit Letter A	Section 23	Township 28N	Range 11W	County San Juan	
Actual Footage Location of Well:					
910 feet from the North line and		1060 feet from the East line			
Ground Level Elev. 5774	Producing Formation Dakota - Fruitland	Pool Basin -Kutz	Dedicated Acreage: 320 Acres		

1. Outline the acreage dedicated to the subject well by colored pencil or hachure marks on the plat below.
2. If more than one lease is dedicated to the well, outline each and identify the ownership thereof (both as to working interest and royalty).
3. If more than one lease of different ownership is dedicated to the well, have the interests of all owners been consolidated by communitization, unitization, force-pooling, etc?

☒ Yes ☐ No If answer is "yes," type of consolidation Communitized

If answer is "no," list the owners and tract descriptions which have actually been consolidated. (Use reverse side of this form if necessary.)

No allowable will be assigned to the well until all interests have been consolidated (by communitization, unitization, forced-pooling, or otherwise) or until a non-standard unit, eliminating such interests, has been approved by the Commission.



CERTIFICATION

I hereby certify that the information contained herein is true and complete to the best of my knowledge and belief.

Curtis C. Parsons

Name
Curtis C. Parsons

Position
District Engineer

Company
Southland Royalty Company

Date
April 18, 1980

I hereby certify that the well location shown on this plat was plotted from field notes of actual surveys made by me or under my supervision, and that the same is true and correct to the best of my knowledge and belief.

Date Surveyed

February 26, 1980

Registered Professional Engineer and/or Land Surveyor

Fred B. Kerr, Jr.

Certificate No. **FRED B. KERR, JR.**

3950

SOUTHLAND ROYALTY COMPANY - DRILLING SCHEDULE

Hughes #2E
910' FNL & 1060' FEL
Section 23, T28N, R11W
San Juan County, New Mexico

Field: Basin Dakota/ Kutz Fruitland Elevation: 5774' GR

Geology:

	<i>Ojo Alamo</i>	423'		
Formation Tops:	Fruitland	1514'	Gallup	5344'
	Pictured Cliffs	1771'	Greenhorn	6124'
	Chacra	2792'	Graneros	6244'
	Cliff House	2319'	Dakota	6306'
			Total Depth	6457'

Logging Program: IES and GR-Density at Total Depth.

Drilling:

Contractor:

Tool Pusher:

SRC Representative:

SRC Answering Service: 325-1841
Dispatch Number: 325-7391

Mud Program: Drill with fresh water mud from surface to Total Depth.

Materials:

Casing Program:	Hole Size	Depth	Casing Size	Wt. & Grade
	12 1/4"	200'	8 5/8"	24# H-40
	7 7/8"	6457'	5 1/2"	15.5# K-55

Float Equipment:

8 5/8" Surface Casing: Pathfinder type "A" guide shoe.

5 1/2" Production Casing: Pathfinder type "A" guide shoe. Self-fill flapper type float collar run one joint above shoe. Five Pathfinder bow-type centralizers (run every other joint above shoe). Run Dowell stage tools at 1846' and 4499' with one cement basket below and five centralizers above each tool.

Wellhead Equipment: 8 5/8" X 10" 2000 psi casing head with 5 1/2" slips
10" 2000 X 6" 2000 tubing head with 1 1/2" IJ X 1 1/2"
EUE hanger

Cementing:

8 5/8" Surface Casing: 140 sacks (165 cu. ft.) of Class "B" with 1/4# gel flake per sack and 3% CaCl_2 . WOC for 12 hours. Test to 600# prior to drilling out. (Volume is 100% excess.)

5 1/2" Production Casing: Stage one - 122 sacks (182 cu. ft.) of 50/50 Poz with 6% gel and 1/4# gel flake per sack, followed by 50 sacks of Neat with 2% CaCl_2 . (Volume is 25% excess to cover Gallup.)

Stage two - 300 sacks (444 cu. ft.) of 50/50 Poz with 6% gel. (Volume is 50% excess to cover top of Chacra.)

Stage three - 324 sacks (480 cu. ft.) of 50/50 Poz with 6% gel. (Volume is 50% excess to circulate to surface.)

WOC and circulate between stages as required by well conditions.

L. O. Van Ryan
District Production Manager



Southland Royalty Company

April 18, 1980

United States Geological Survey
Mr. James Sims
P. O. Box 959
Farmington, NM 87401

RE: Blowout Preventer Plan

Dear Sir:

All drilling and completion rigs will be equipped with 6" or larger double hydraulic blowout preventers and a hydraulic closing unit with steel lines.

The preventer is 3000# working pressure and 6000# test pressure.

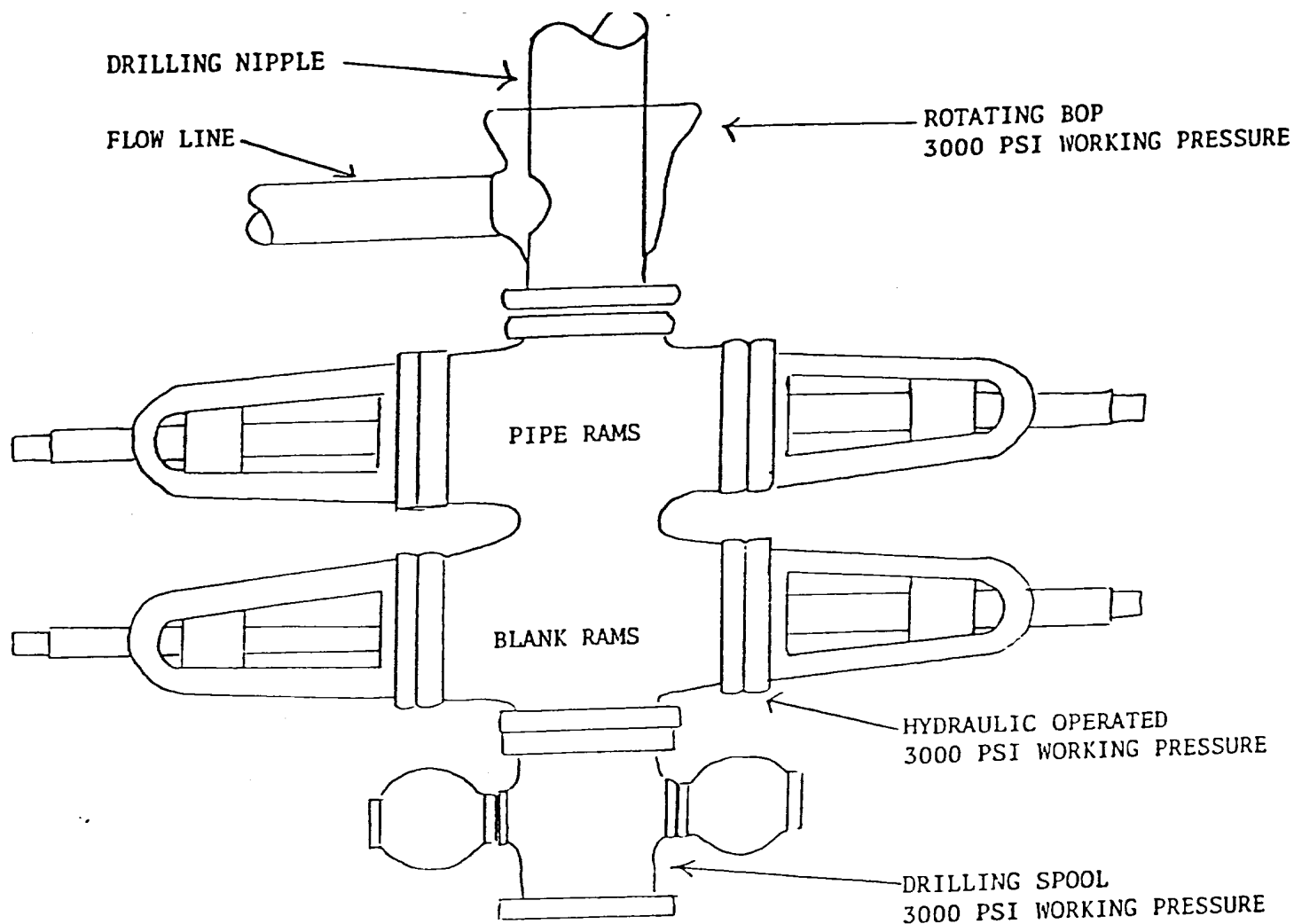
All crews will be thoroughly trained in the operation of this preventer. The preventer will be tested frequently enough to insure proper operation.

Yours truly,

Curtis C. Parsons
Curtis C. Parsons
District Engineer

CCP/ke

Hughes #2E
910' FNL & 1060' FEL
Section 23, T28N, R11W
San Juan County, New Mexico



PREVENTERS AND SPOOLS ARE TO HAVE
THROUGH BORE OF 6" - 3000 PSI OR LARGER



Southland Royalty Company

April 18, 1980

United States Geological Survey
Mr. James Sims
P. O. Box 959
Farmington, NM 87401

Dear Sir:

Enclosed please find a map showing existing roads and planned access roads to Southland Royalty Company's Hughes #2E well.

The locations of tank batteries and flow lines will be on location with well. A burn pit will be provided for disposal of trash. Cuttings, drilling fluid and produced fluids will be put into the reserve pit and properly disposed of depending on amount and type of fluids.

There will be no camps or airstrips.

Also, enclosed is a location layout showing approximate location of rig, pits and pipe racks.

Water supply will be the San Juan River.

The location will be restored according to Bureau of Land Management standards. This work will begin when all related construction is finished.

Mr. Ross Lankford will be Southland Royalty Company's field representative supervising these operations.

Yours truly,

Curtis C. Parsons
District Engineer

CCP/ke



Southland Royalty Company

April 18, 1980

United States Geological Survey
Mr. James Sims
P. O. Box 595
Farmington, NM 87401

Dear Sir:

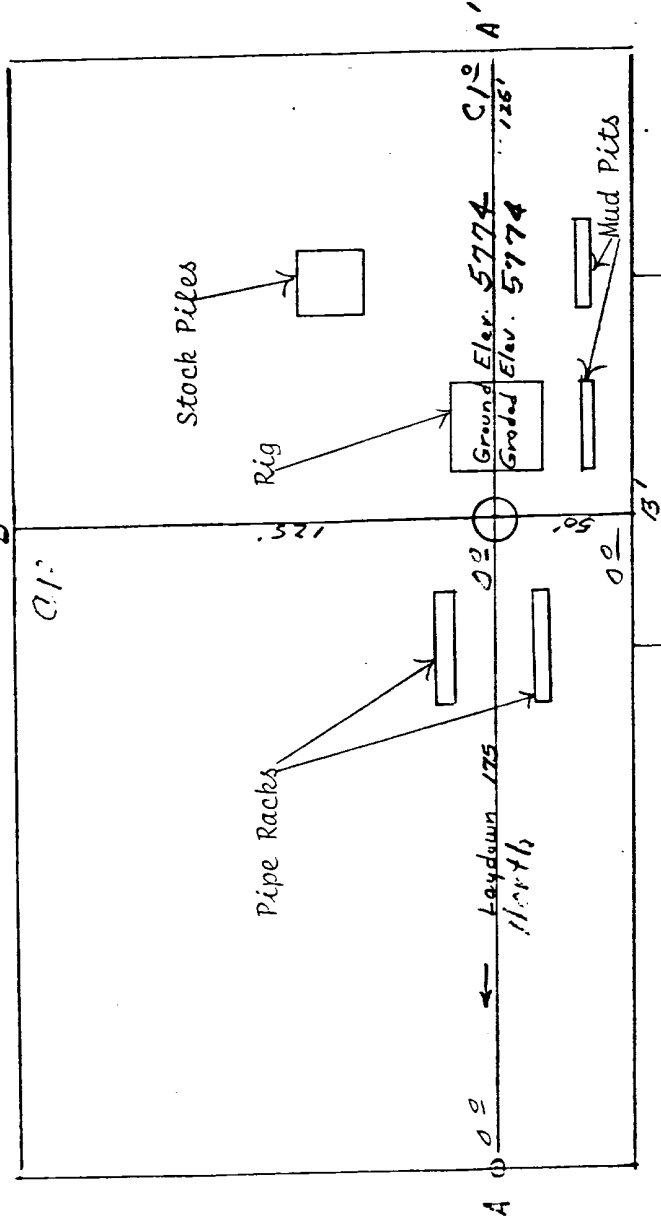
I hereby certify that I, or persons under my direct supervision, have inspected the proposed drillsite and access route; that I am familiar with the conditions which presently exist; that the statements made in this plan are, to the best of my knowledge, true and correct; and, that the work associated with the operations proposed herein will be performed by Southland Royalty Company and its contractors and subcontractors in conformity with this plan and the terms and conditions under which it is approved.

Date:

L. O. Van Ryan
District Production Manager

LOVR/ke

Location Profile for
 SOUTHLAND ROYALTY COMPANY #2-E HUGHES
 910' FNL 1060' FEL Sec. 23-T28N-R11W San Juan County, New Mexico



Scale: 1" = 50'

Vert. 1" = 40' Horiz. 1" = 100'

A-A'		C-C'	
5780			
5770			

B-B'

B-B'		D-D'	
5780			
5770			

Vert. 1" = 40' Horiz. 1" = 100'

C-C'		E	

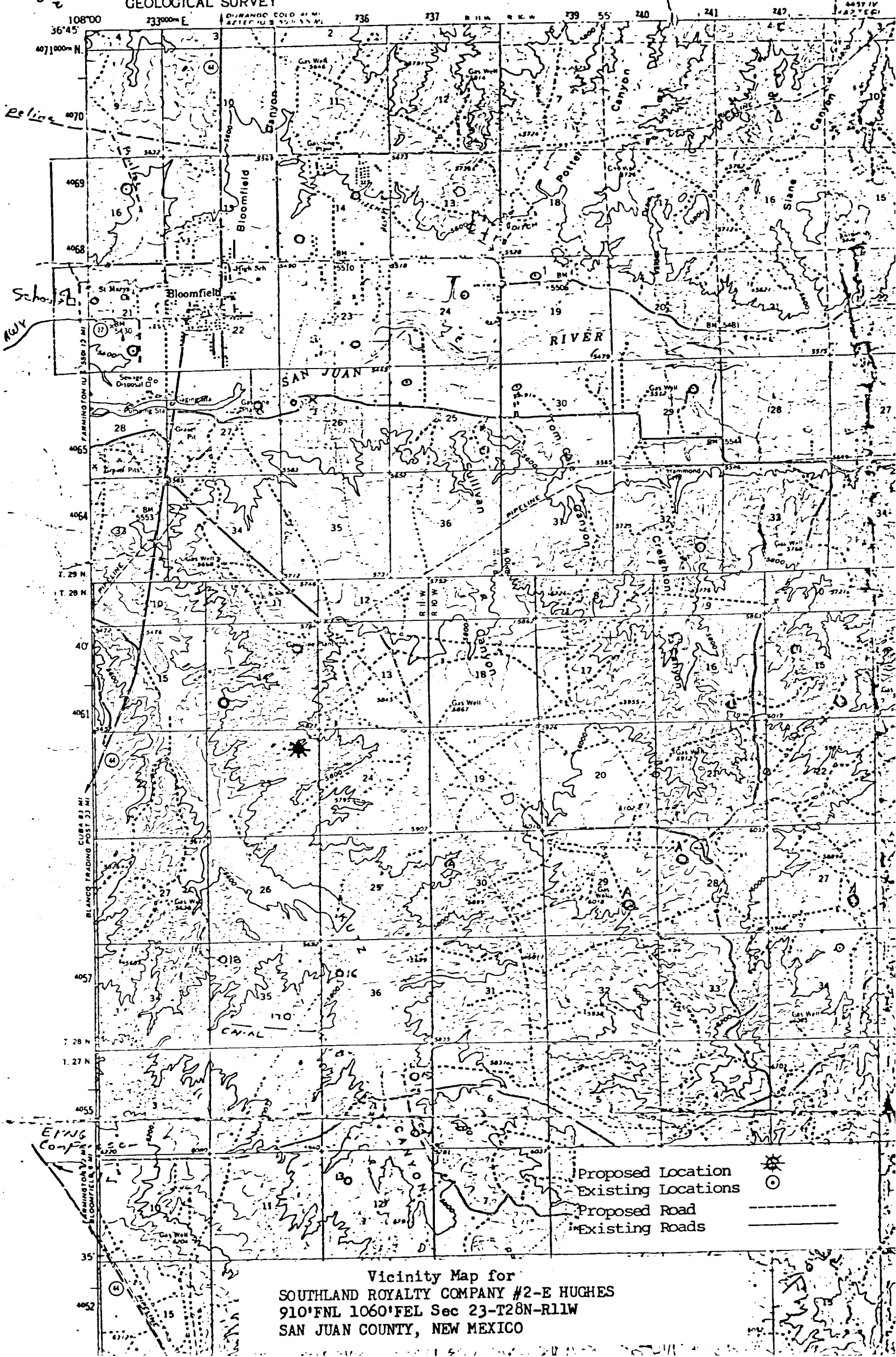
D-D'

D-D'		E	

KERR LAND SURVEYING
 Date: 2/26/80

Frederick

UNITED STATES
DEPARTMENT OF THE INTERIOR
GEOLOGICAL SURVEY



Vicinity Map for
SOUTHLAND ROYALTY COMPANY #2-E HUGHES
910'FNL 1060'FEL Sec 23-T28N-R11W
SAN JUAN COUNTY, NEW MEXICO