

UNITED STATES
DEPARTMENT OF THE INTERIOR
GEOLOGICAL SURVEY

APPLICATION FOR PERMIT TO DRILL, DEEPEN, OR PLUG BACK

1a. TYPE OF WORK
DRILL ☒ DEEPEN ☐ PLUG BACK ☐

b. TYPE OF WELL
OIL WELL ☐ GAS WELL ☒ OTHER ☐ SINGLE ZONE ☒ MULTIPLE ZONE ☐

2. NAME OF OPERATOR
CURTIS J. LITTLE

3. ADDRESS OF OPERATOR
P. O. Box 2487, Farmington, New Mexico 87401

4. LOCATION OF WELL (Report location clearly and in accordance with any State requirements.)
At surface 1640'FWL 1120'FSL
At proposed prod. zone same

14. DISTANCE IN MILES AND DIRECTION FROM NEAREST TOWN OR POST OFFICE*
3 miles South of Farmington

15. DISTANCE FROM PROPOSED* LOCATION TO NEAREST PROPERTY OR LEASE LINE, FT. (Also to nearest drg. unit line, if any)
1120'

16. NO. OF ACRES IN LEASE
275.36

17. NO. OF ACRES ASSIGNED TO THIS WELL
344.28

18. DISTANCE FROM PROPOSED LOCATION* TO NEAREST WELL, DRILLING, COMPLETED, OR APPLIED FOR, ON THIS LEASE, FT.
5000'

19. PROPOSED DEPTH
6500'

20. ROTARY OR CABLE TOOLS
Rotary

21. ELEVATIONS (Show whether DF, RT, GR, etc.)
5955' GR

22. APPROX. DATE WORK WILL START*
November 1980

23. PROPOSED CASING AND CEMENTING PROGRAM

SIZE OF HOLE	SIZE OF CASING	WEIGHT PER FOOT	SITTING DEPTH	QUANTITY OF CEMENT
12-1/4	8-5/8	24	200	100 SX
7-7/8	4-1/2	10.5	6500	600 SX

This well will be drilled with mud, mechanical logs run at TD and the Dakota sands selectively perforated and fractured. 10" 3000 psi BOP with blind and pipe rams will be operational at all times while drilling. 6" 3000 psi double gate manual BOP will be utilized for completion. DV tools will be set at base of Mesaverde and base of Pictured Cliffs for a 3-stage cement job. The HBP Federal leases have an existing gas contract with El Paso Natural Gas Company.

Formation Tops: Ojo Alamo surface Point Lookout 4160
Pictured Cliffs 1650 Mancos 4415
Lewis 1750 Gallup 5365
Cliff House 2680 Greenhorn 6100
Dakota 6200

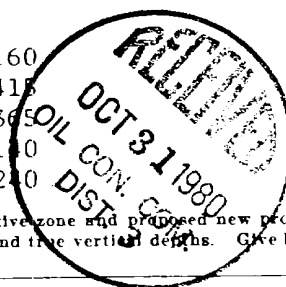
IN ABOVE SPACE DESCRIBE PROPOSED PROGRAM: If proposal is to deepen or plug back, give data on present productive zone and proposed new productive zone. If proposal is to drill or deepen directionally, give pertinent data on subsurface locations and measured and true vertical depths. Give blowout preventer program, if any.

24. SIGNED Curtis J. Little TITLE Operator DATE September 30, 1980
(This space for Federal or State office use)

PERMIT NO. _____ APPROVAL DATE _____

APPROVED BY _____ TITLE _____ DATE _____
CONDITIONS OF APPROVAL, IF ANY

*See Instructions On Reverse Side



NW4+
large pool
K-5007
ch 5

NEW MEXICO OIL CONSERVATION COMMISSION
WELL LOCATION AND ACREAGE DEDICATION PLAT

Form C-102
Supersedes C-128
Effective 1-1-65

All distances must be from the outer boundaries of the Section.

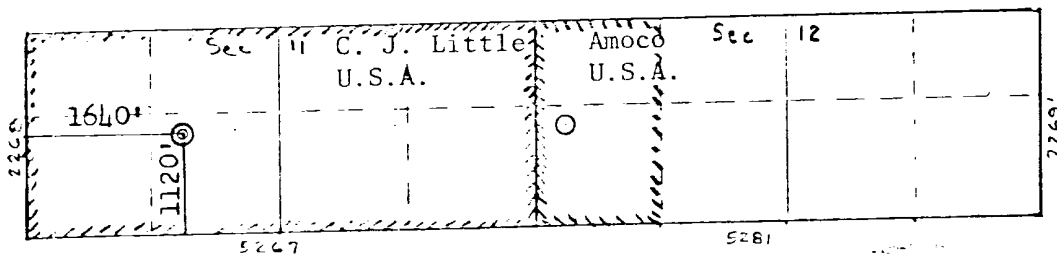
Operator CURTIS J. LITTLE			Lease FEDERAL COM		Well No. 2E
Unit Letter N	Section 11	Township 28N	Range 13W	County San Juan	
Actual Footage Location of Well: 1120 feet from the South line and 1640 feet from the West line					
Ground Level Elev: 5955	Producing Formation Dakota		Pool Basin-Dakota	Dedicated Acreage: 344.28	Acre

1. Outline the acreage dedicated to the subject well by colored pencil or hachure marks on the plat below.
2. If more than one lease is dedicated to the well, outline each and identify the ownership thereof (both as to working interest and royalty).
3. If more than one lease of different ownership is dedicated to the well, have the interests of all owners been consolidated by communitization, unitization, force-pooling, etc?

☒ Yes ☐ No If answer is "yes," type of consolidation Communitization

If answer is "no," list the owners and tract descriptions which have actually been consolidated. (Use reverse side of this form if necessary.)

No allowable will be assigned to the well until all interests have been consolidated (by communitization, unitization, forced-pooling, or otherwise) or until a non-standard unit, eliminating such interests, has been approved by the Commission.



Scale: 1"=2000'

CERTIFICATION

I hereby certify that the information contained herein is true and complete to the best of my knowledge and belief.

Name Curtis J. Little

Position Operator

Company Curtis J. Little

Date October 2, 1980

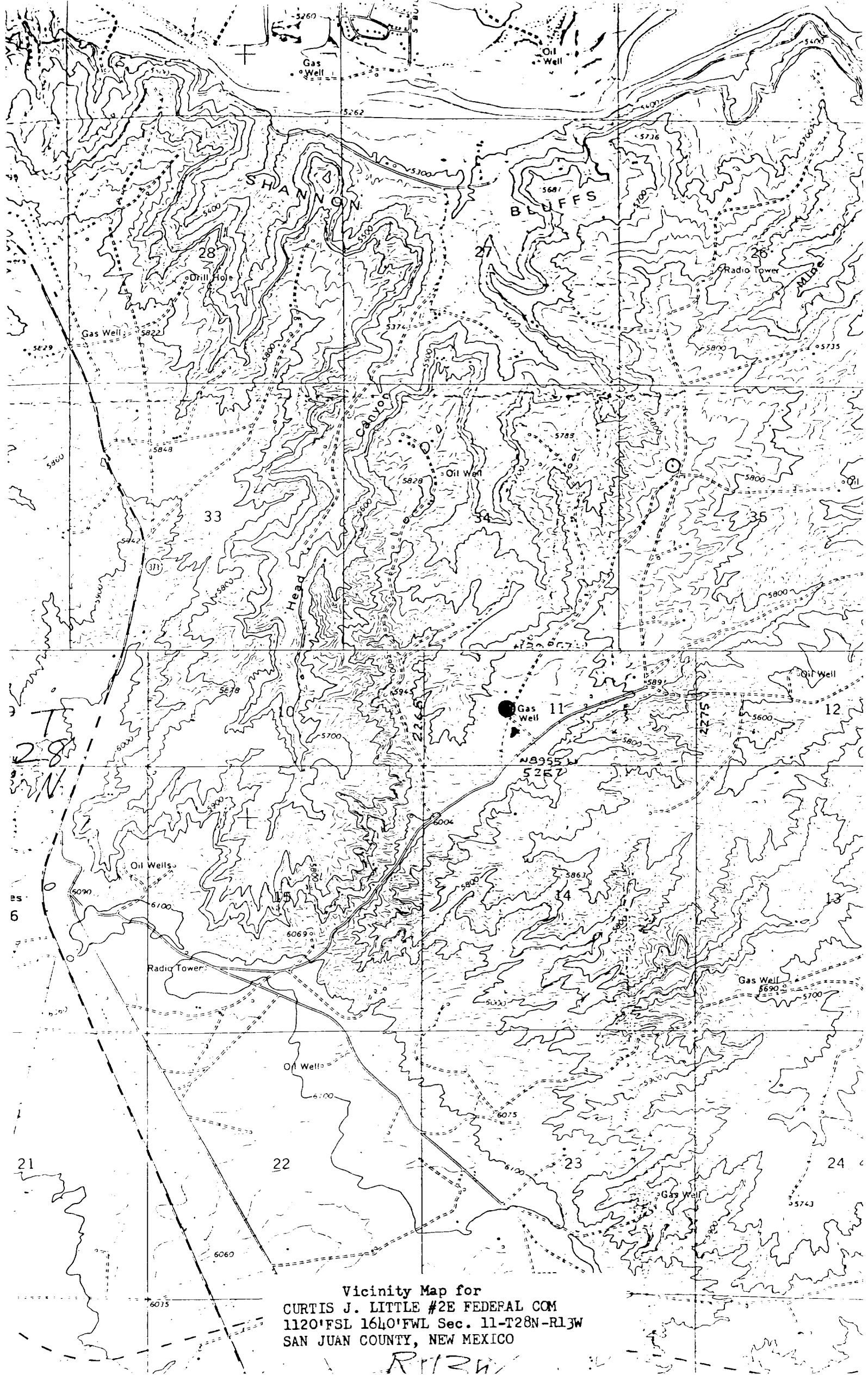
I hereby certify that the well location shown on this plat was plotted from field notes of actual surveys made by me or under my supervision, and that the same is true and correct to the best of my knowledge and belief.

Date Surveyed September 30, 1980

Registered Professional Engineer and Land Surveyor

Fred B. Kern Jr.

Certificate No. 3950



Vicinity Map for
CURTIS J. LITTLE #2E FEDERAL COM
1120° FSL 1640° FWL Sec. 11-T28N-R13W
SAN JUAN COUNTY, NEW MEXICO

R13W

PLAN OF DEVELOPMENT

CURTIS J. LITTLE

No. 2-E Federal Com.

SE/4 SW/4 Section 11 , T-28-N R-13-W
San Juan County, New Mexico

1. Existing roads (see enclosed topo map).
2. Planned access road: None required. Location is approximately 50 feet from existing road.
3. Location of wells (see topo map).
4. Location of tank battery and production facilities: If this well is productive, it would be gas; therefore, the facilities would be the wellhead, tanks for produced water and condensate, if any, separator and gas line to the well. The tanks and separator would be set within 150' of the well and the gas line would run adjacent and parallel to road.
5. Location and type of water supply: Water will be hauled by truck from the San Juan River in Farmington.
6. Source of construction materials: All construction material such as gravel, sand, timbers, etc. will be purchased and hauled to the location. No water, sand or gravel will be used from this land.
7. Methods for handling waste disposal:
 - 1) Cuttings will be buried 3' below the surface.
 - 2) Drilling fluids will be left in a fenced, open pit to evaporate.
 - 3) Produced oil or condensate (if any) will be stored in a tank.
 - 4) Portable toilet to be provided.
 - 5) Trash will be burned in burn pit.
 - 6) After pit area is sufficiently dry, cuttings will be pushed into pit and sub-soil will be placed on any remaining fluid and cuttings, then top soil, if any, will be placed over both pit and location area.
8. Ancillary facilities: No camps or airstrips will be used.
9. Wellsite layout: Top soil, if any, will be stockpiled and reused. Pits will not be lined.
10. Plans for restoration of surface: Upon completion of well, all pits will be backfilled and top soil replaced and recontoured back to the original terrain. Pits will be backfilled as soon as they evaporate enough to permit such work. Should it be necessary to protect livestock or wild game, pits will be fenced,

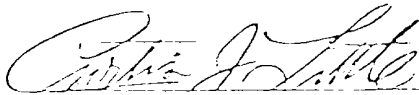
and maintained until clean-up operations are commenced. Should oil accumulate on the pit, it will be removed and buried 6' deep or overhead - flagging will be employed to protect wildlife.

11. Other information:

- 1) Topography - drillsite and access low valley profile.
- 2) Vegetation - sparse grass and sagebrush with moderate growth of cedar trees.
- 3) Land Use - land is used for grazing with no reservoir or water on this site. There are no known archeological, cultural, or historical sites on this site.

12. Lessee's or operator's representative: CURTIS J. LITTLE Home: 327-6673
Offc: 327-6176

13. I hereby certify that I, or persons under my direct supervision, have inspected the proposed drillsite and access route; that I am familiar with the conditions which presently exist; that the statements made in this plan are, to the best of my knowledge, true and correct; and, that the work associated with the operations proposed herein will be performed by Four Corners Drilling Company and its contractors and sub-contractors in conformity with this plan and the terms and conditions under which it is proposed.

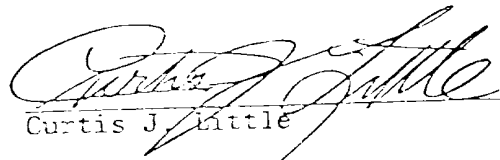


Curtis J. Little
P. O. Box 2487
Farmington, New Mexico 87401

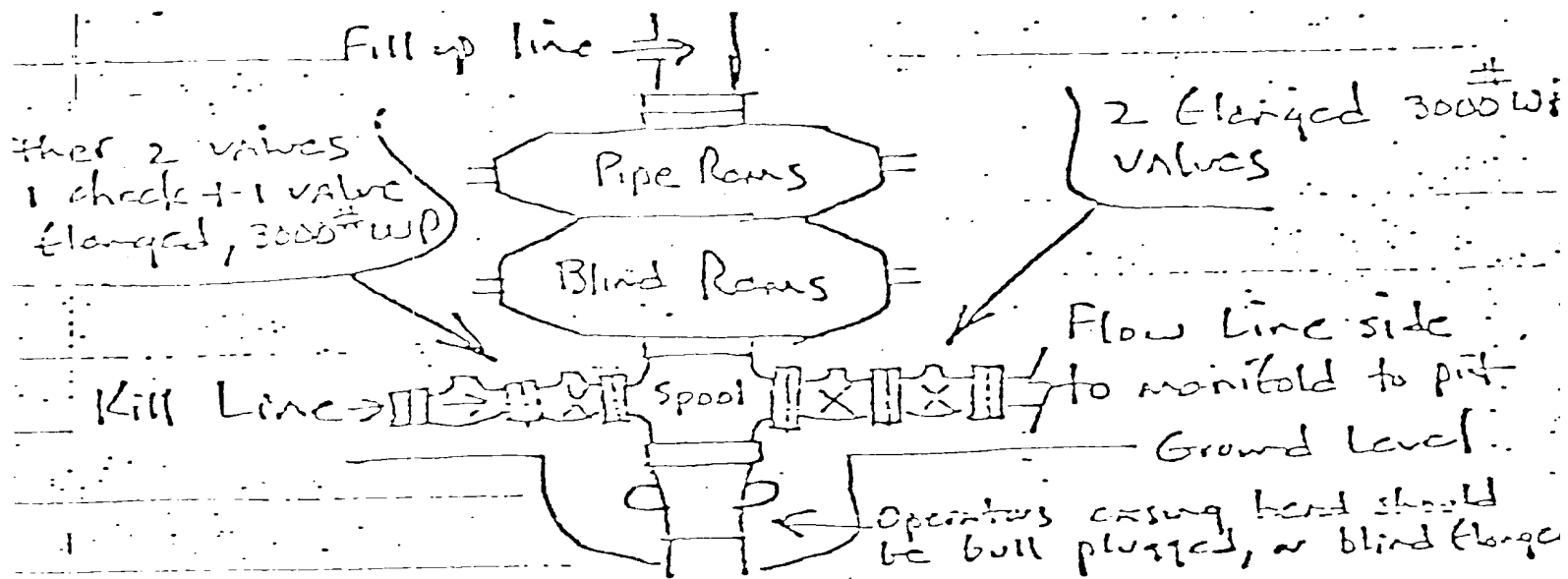
WELL CONTROL PLAN

CURTIS J. LITTLE
No. 2-E Federal Com.
SE/4 SW/4 Section 11 , T-28-N R-13-W
San Juan County, New Mexico

1. Surface Casing: 9-5/8" 36#/ft. Grade K-55, Short T&C, set at 160' and cemented with pump and plug method back to surface.
2. Casinghead Flange: 9-5/8" x 10-3/4" top 1500 psig W.P. Larkin (or equivalent) casinghead with two 2" 1500 psi L.P. outlets.
3. Blowout Preventor: An 8" 3000 psig W.P. double gate hydraulic Shaffer BOP (or equivalent) with drill pipe rams and blind rams. All fill, kill and choke lines will be minimum of 2" 2000 psi working pressure. The rams will be closed daily and checked for proper operation.
4. Auxillary Equipment: a) Drill pipe floats will be allowed at contractor's discretion; b) Visual and manual monitoring of mud system will be maintained.
5. Anticipated bottom hole pressure is less than 1800 psi at 6300' or a gradient of .277 psi/ft.
6. Well will be drilled with water base mud system with 8.8 - 9.0 ppg weight 35-45 seconds viscosity to T.D.


Curtis J. Little

BLOWOUT PREVENTOR EQUIPMENT



Detail Flow Line Side (manifold)
(All Gillings elongated & WP at 3000#)

