

UNITED STATES
DEPARTMENT OF THE INTERIOR
GEOLOGICAL SURVEY

APPLICATION FOR PERMIT TO DRILL, DEEPEN, OR PLUG BACK

1a. TYPE OF WORK

DRILL ☒DEEPEN ☐PLUG BACK ☐

b. TYPE OF WELL

OIL
WELL ☐GAS
WELL ☒OTHER ☐SINGLE
ZONE ☒MULTIPLE
ZONE ☐

2. NAME OF OPERATOR

Energy Reserves Group, Inc.

3. ADDRESS OF OPERATOR

P.O. Box 3280, Casper, Wyoming 82602

4. LOCATION OF WELL (Report location clearly and in accordance with any State requirements.)*
At surfaceAt proposed prod. zone 1,485' FSL & 1,750' FEL
(NW/SE)

14. DISTANCE IN MILES AND DIRECTION FROM NEAREST TOWN OR POST OFFICE*

Approximately 5 miles south east of Farmington, New Mexico

15. DISTANCE FROM PROPOSED*

LOCATION TO NEAREST
PROPERTY OR LEASE LINE, FT.
(Also to nearest drlg. unit line, if any)

795'

18. DISTANCE FROM PROPOSED LOCATION*

TO NEAREST WELL, DRILLING, COMPLETED,
OR APPLIED FOR, ON THIS LEASE, FT.

1,850'

16. NO. OF ACRES IN LEASE

Unitized

19. PROPOSED DEPTH

1,530'

17. NO. OF ACRES ASSIGNED
TO THIS WELL

160 (136.48)

20. ROTARY OR CABLE TOOLS

Rotary

22. APPROX. DATE WORK WILL START*

Nov.-Dec., 1980

23.

PROPOSED CASING AND CEMENTING PROGRAM

SIZE OF HOLE	SIZE OF CASING	WEIGHT PER FOOT	SETTING DEPTH	QUANTITY OF CEMENT
12-1/4"	8-5/8"	24#	120'	cement to surface
6-3/4"	4-1/2"	9.5#	1,530'	cement to surface

Energy Reserves Group, Inc. proposes to drill the above referenced well with rotary tools from the surface to T.D.

See attached plan of operations.

Gas is dedicated to El Paso Natural Gas Company.

IN ABOVE SPACE DESCRIBE PROPOSED PROGRAM: If proposal is to deepen or plug back, give data on present productive zone and proposed new productive zone. If proposal is to drill or deepen directionally, give pertinent data on subsurface locations and measured and true vertical depths. Give blowout preventer program, if any.

24.

SIGNED

TITLE Field Services Administrator

DATE

9-18-80

(This space for Federal or State office-use)

PERMIT NO.

AD AMENDED

APPROVAL DATE

APPROVED BY

CONDITIONS OF APPROVAL, IF ANY

FOR 465 F. S. S. S.
DIRECTOR

TITLE

DATE

White
Dated

ok 3m

OIL CONSERVATION DIVISION

P. O. BOX 2088

SANTA FE, NEW MEXICO 87501

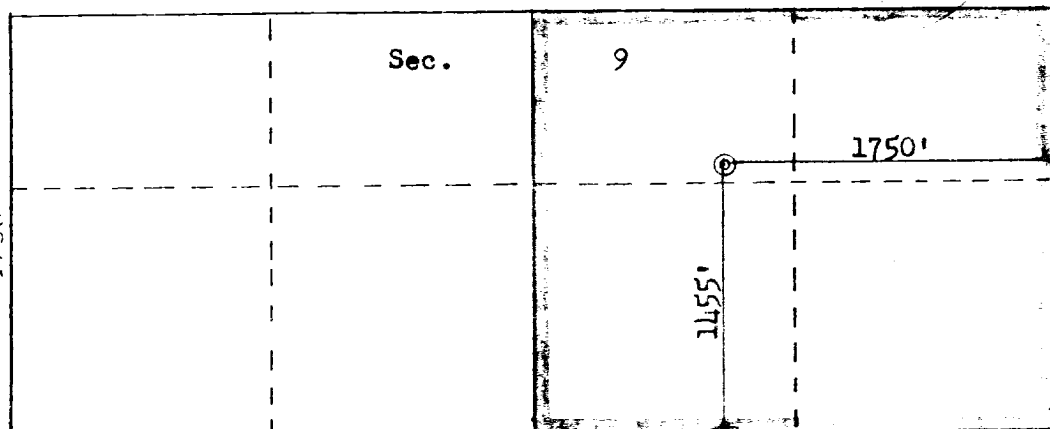
Form C-107
Revised 10-1-78

STATE OF NEW MEXICO

ENERGY AND MINERALS DEPARTMENT

All distances must be from the outer boundaries of the Section.

Operator ENERGY RESERVES GROUP			Lease GALLEGOS CANYON UNIT		Well No. 310
Unit Letter J	Section 9	Township 28N	Range 12W	County San Juan	
Actual Footage Location of Well:					
1455 feet from the South line and		1750 feet from the East line			
Ground Level Elev. 5401	Producing Formation Pictured Cliffs	Fool West Kutz Pictured Cliffs	Dedicated Acreage: (136.18) Acres		
<p>1. Outline the acreage dedicated to the subject well by colored pencil or hachure marks on the plat below.</p> <p>2. If more than one lease is dedicated to the well, outline each and identify the ownership thereof (both as to working interest and royalty).</p> <p>3. If more than one lease of different ownership is dedicated to the well, have the interests of all owners been consolidated by communitization, unitization, force-pooling, etc?</p> <p><input type="checkbox"/> Yes <input type="checkbox"/> No If answer is "yes," type of consolidation _____</p> <p>If answer is "no," list the owners and tract descriptions which have actually been consolidated. (Use reverse side of this form if necessary.) _____</p> <p>No allowable will be assigned to the well until all interests have been consolidated (by communitization, unitization, forced-pooling, or otherwise) or until a non-standard unit, eliminating such interests, has been approved by the Commission.</p>					



Scale: 1"=1000'

CERTIFICATION	
I hereby certify that the information contained herein is true and complete to the best of my knowledge and belief.	
Name	<i>William J. Hunt</i>
Position	Field Services Administrator
Company	Energy Reserves Group, Inc.
Date	9-18-80
I hereby certify that the well location shown on this plat was plotted from field notes of actual surveys made by me or under my supervision, and that the same is true and correct to the best of my knowledge and belief.	
Date Surveyed	August 20, 1980
Registered Professional Engineer and Land Surveyor	
<i>Fred B. Kerr Jr.</i>	
Certificate No.	3950