



STATE OF NEW MEXICO
ENERGY AND MINERALS DEPARTMENT
OIL CONSERVATION DIVISION

BRUCE KING
GOVERNOR
LARRY KEHOE
SECRETARY

January 13, 1981

POST OFFICE BOX 2088
STATE LAND OFFICE BUILDING
SANTA FE, NEW MEXICO 87501
(505) 827-2434

Energy Reserves Group
P. O. Box 3280
Casper, Wyoming 82602

Attention: Mr. William J. Fiant

Administrative Order NSL-1307

Gentlemen:

Reference is made to your application for a non-standard location for your Gallegos Canyon Unit Well No. 312 to be located 790 feet from the North line and 2480 feet from the East line of Section 16, Township 28 North, Range 12 West, NMPM, West Kutz-Pictured Cliffs Gas Pool, San Juan County, New Mexico.

By authority granted me under the provisions of Rule 104 F of the Division Rules and Regulations, the above-described unorthodox location is hereby approved.

Sincerely,

JOE D. RAMEY,
Director

JDR/RLS/dr

cc: Oil Conservation Division - Aztec
Oil & Gas Engineering Committee - Hobbs
U. S. Geological Survey - Farmington

OIL CONSERVATION COMMISSION
Albuquerque DISTRICT

OIL CONSERVATION COMMISSION
BOX 2088
SANTA FE, NEW MEXICO

DATE 1-7-81

RE: Proposed MC _____
Proposed DHC _____
Proposed NSL ✓ _____
Proposed SWD _____
Proposed WFX _____
Proposed PMX _____

Gentlemen:

I have examined the application dated Dec. 22, 1980
for the Energy Reserve Corp. OC 21 # 312 B-16-28N-12W
Operator Lease and Well No. Unit, S-T-R

and my recommendations are as follows:

Approve

Yours very truly,

Frank J. Chang

Energy Reserves Group, Inc.
P.O. Box 3280
Casper, Wyoming 82602
Phone 307 265 7331



December 17, 1980

State of New Mexico
Oil Conservation Division
1000 Rio Brazos Road
Aztec, New Mexico 87401



RE: Request for exception location,
Gallegos Canyon Unit, San Juan
County, New Mexico

Gentlemen:

Energy Reserves Group, Inc. respectfully requests an exception location
on the below listed well location due to topographical conflicts.

Gallegos Canyon Unit Well No. 312
790' FNL & 2480' FEL
Section 16, T28N-R12W

It was necessary to move this well site to its present location due to
conflicts with the Gallegos Wash. The location as originally staked,
fell in the middle of the wash. This wash flows intermittently, however,
it does not lend itself as suitable for any surface activity especially
a drill site. The location was moved the minimum distance from the
original stake to allow the proposed activity.

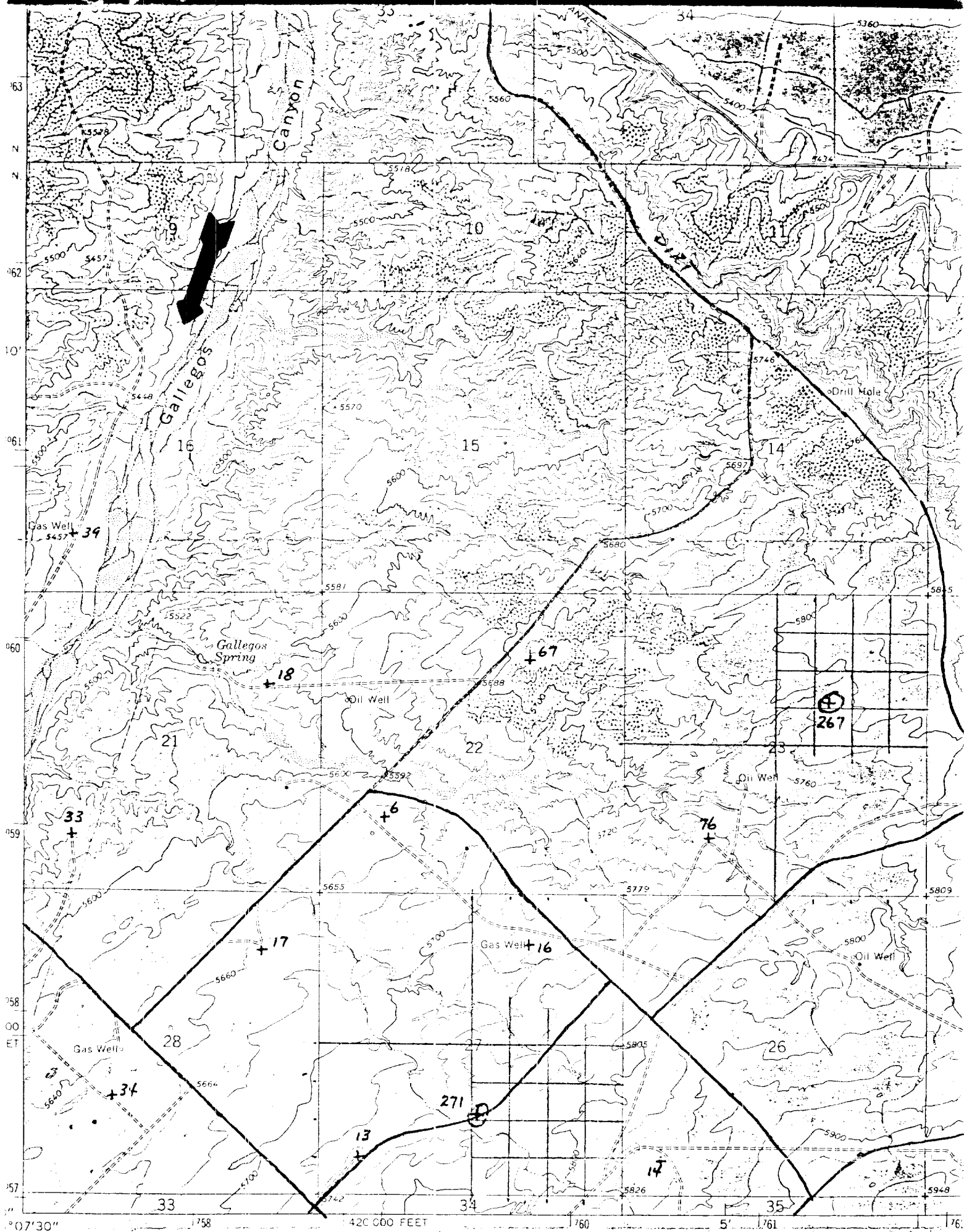
We appreciate your consideration in review of this request.

Very truly yours,

ENERGY RESERVES GROUP, INC.

William J. Fiant
Field Services Administrator

WJF/dm



Mapped, edited, and published by the Geological Survey

Control by USGS, USC&GS, and U. S. Bureau of Reclamation

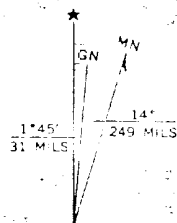
Topography by photogrammetric methods from aerial photographs taken 1964 and by planetable surveys of the Bureau of Reclamation 1965. Field checked by USGS 1965

Polyconic projection 1927 North American datum

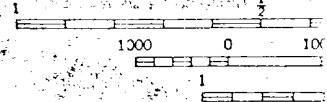
10,000-foot grid based on New Mexico coordinate system, west zone

1000 meter Universal Transverse Mercator grid ticks, zone 12, shown in blue

Fine red dashed lines indicate selected fence lines



UTM GRID AND 1965 MAGNETIC NORTH DECLINATION AT CENTER OF SHEET



DOTTE

THIS MAP COM
FOR SALE BY U. S. GEOLOGICAL
A FOLDER DESCRIBING TO