

UNITED STATES
DEPARTMENT OF THE INTERIOR
GEOLOGICAL SURVEY30-045-24816
5. LEASE DESIGNATION AND SERIAL NO.
NM 09979

6. IF INDIAN, ALLOTTEE OR TRIBE NAME

7. UNIT AGREEMENT NAME

Southeast Cha Cha

8. FARM OR LEASE NAME

9. WELL NO.

38

10. FIELD AND POOL, OR WILDCAT

Cha Cha Gallup

11. SEC., T., R., M., OR RLK.
AND SURVEY OR AREA

Sec. 22, T28N, R13W

12. COUNTY OR PARISH

San Juan

13. STATE

New Mexico

APPLICATION FOR PERMIT TO DRILL, DEEPEN, OR PLUG BACK

1a. TYPE OF WORK

DRILL ☒DEEPEN ☐PLUG BACK ☐

b. TYPE OF WELL

OIL
WELL ☒GAS
WELL ☐

OTHER

SINGLE
ZONE ☐MULTIPLE
ZONE ☐

2. NAME OF OPERATOR

Hicks Enco, Inc.

3. ADDRESS OF OPERATOR

P. O. Box 174, Farmington, New Mexico 87401

4. LOCATION OF WELL (Report location clearly and in accordance with any State requirements.)*

At surface

✓ 990' from west line and 2100' from south line

At proposed prod. zone

14. DISTANCE IN MILES AND DIRECTION FROM NEAREST TOWN OR POST OFFICE*

10 miles southwest of Farmington

15. DISTANCE FROM PROPOSED*

LOCATION TO NEAREST

PROPERTY OR LEASE LINE, FT.

990'

(Also to nearest drlg. unit line, if any)

18. DISTANCE FROM PROPOSED LOCATION*

TO NEAREST WELL, DRILLING, COMPLETED,
OR APPLIED FOR, ON THIS LEASE, FT.

1500'

16. NO. OF ACRES IN LEASE

960

17. NO. OF ACRES ASSIGNED

TO THIS WELL

w/80

19. PROPOSED DEPTH

5900'

20. ROTARY OR CABLE TOOLS

Rotary

21. ELEVATIONS (Show whether DF, RT, GR, etc.)

Ground 6048

22. APPROX. DATE WORK WILL START*

Jan 15, 1981

23. PROPOSED CASING AND CEMENTING PROGRAM

SIZE OF HOLE	SIZE OF CASING	WEIGHT PER FOOT	SETTING DEPTH	QUANTITY OF CEMENT
12 1/4"	8 5/8"	24# PERFORATED	450'	350 sks
7 7/8"	5 1/2"	15.5# PERFORATED	5850'	

Drill 12 1/4" hole to 450'. Set 8 5/8" through the Ojo Alamo. Cement with 350 sks class B cement 2% CaCl. Drill 7 7/8" hole to 5850'. Use water mud systems as conditions dictate. Run electric logs. Run 5 1/2 15.5# casing to total depth. Cement in two stages with sufficient volume to 200' above Pictured Cliff formation. Perforate Gallup zones. Frac treat perforated interval. Place on production.

Approximate tops:

Ojo Alamo	300'	Mesa Verde	2585'
Kirtland	400'	Mancos	4450'
Pictured Cliffs	1745'	Gallup	5325'
Lewis	1850'	T.D.	5850'



IN ABOVE SPACE DESCRIBE PROPOSED PROGRAM: If proposal is to deepen or plug back, give data on present productive zone and proposed new productive zone. If proposal is to drill or deepen directionally, give pertinent data on subsurface locations and measured and true vertical depths. Give blowout preventer program, if any.

24.

SIGNED

TITLE President

DATE 12/12/80

(This space for Federal or State office use)

PERMIT NO.

APPROVAL DATE

APPROVED BY

TITLE

DATE

CONDITIONS OF APPROVAL, IF ANY

DISTRICT ENGINEER

ch 3~

M12000

OIL CONSERVATION DIVISION

P. O. BOX 2088

STATE OF NEW MEXICO
ENERGY AND MINERALS DEPARTMENT

SANTA FE, NEW MEXICO 87501

Form C-107
Revised 10-1-77

All distances must be from the outer boundaries of the Section.

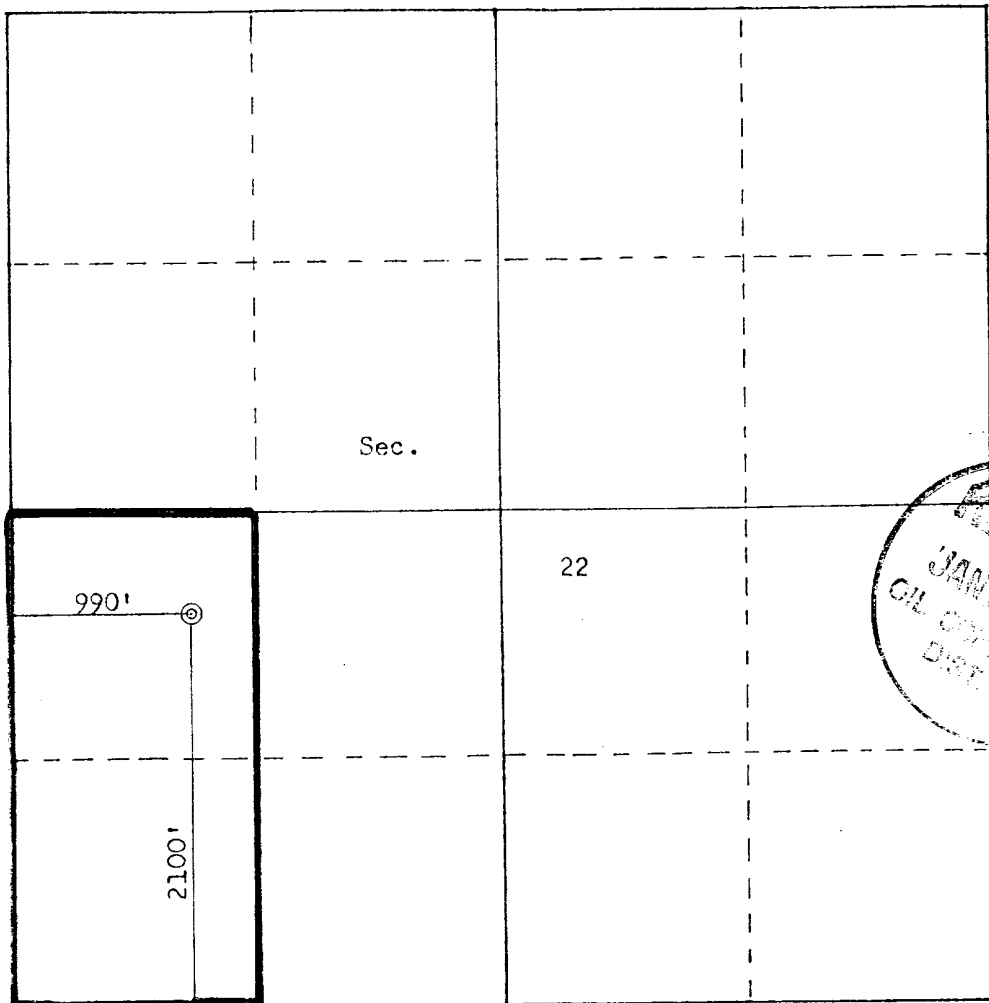
Operator HICKS ENCO, INCORPORATED		Lease SE CHA CHA		Well No. 38	
Unit Letter L	Section 22	Township 28N	Range 13W	County San Juan	
Actual Footage Location of Well: 2100 feet from the South line and 990 feet from the West line					
Ground Level Elev: 6043	Producing Formation Gallup		Pool Cha Cha		Dedicated Acreage: 80 Acres

1. Outline the acreage dedicated to the subject well by colored pencil or hatchure marks on the plat below.
2. If more than one lease is dedicated to the well, outline each and identify the ownership thereof (both as to working interest and royalty).
3. If more than one lease of different ownership is dedicated to the well, have the interests of all owners been consolidated by communitization, unitization, force-pooling, etc?

☐ Yes ☐ No If answer is "yes," type of consolidation _____

If answer is "no," list the owners and tract descriptions which have actually been consolidated. (Use reverse side of this form if necessary.) _____

No allowable will be assigned to the well until all interests have been consolidated (by communitization, unitization, forced-pooling, or otherwise) or until a non-standard unit, eliminating such interests, has been approved by the Commission.



Scale: 1"=1000'

CERTIFICATION

I hereby certify that the information contained herein is true and complete to the best of my knowledge and belief.

Name

J D Hicks

Position

President

Company

Hicks Enco, Inc.

Date

12/15/80

I hereby certify that the well location shown on this plat was plotted from field notes of actual surveys made by me or under my supervision, and that the same is true and correct to the best of my knowledge and belief.

Date Surveyed

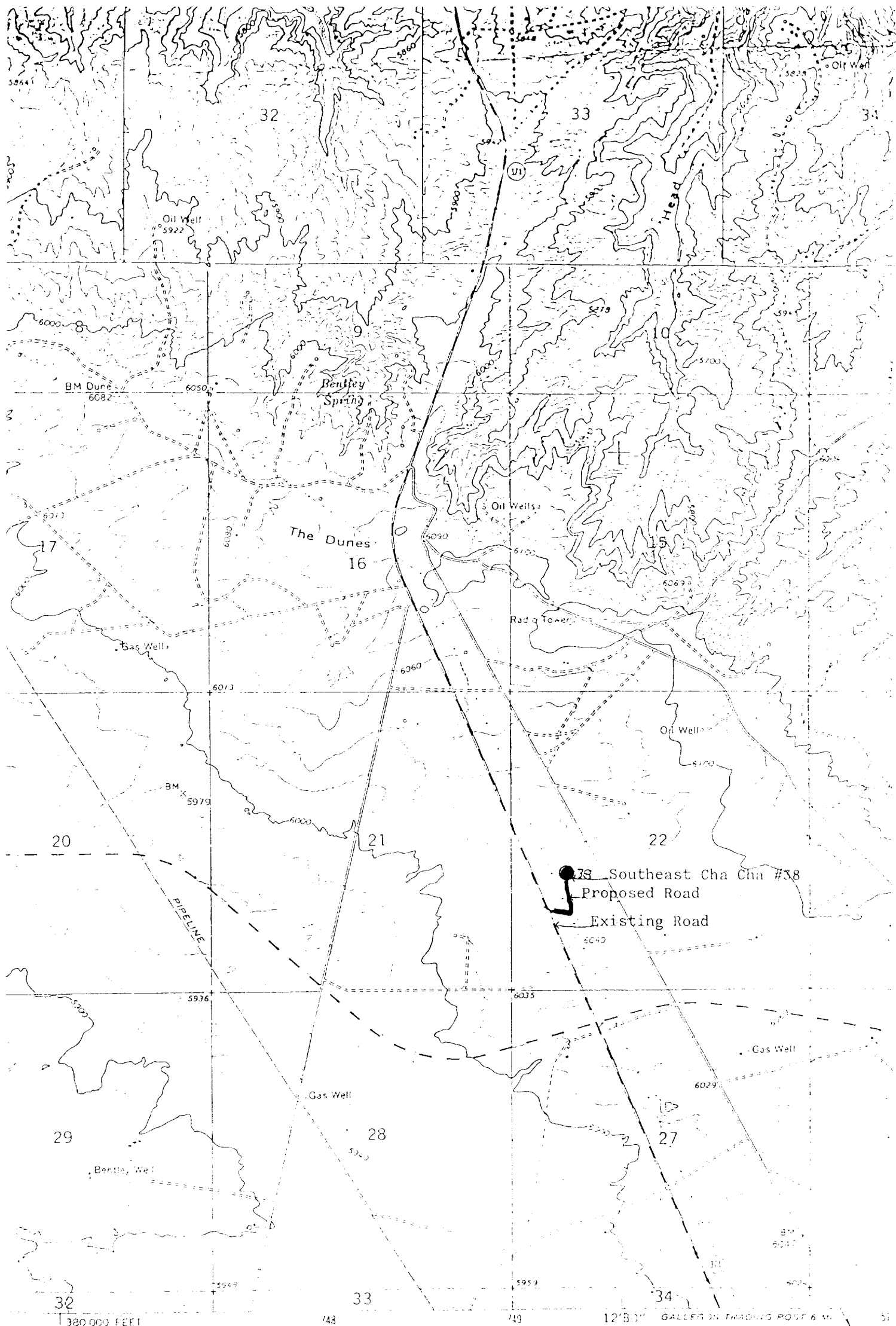
December 10, 1980

Registered Professional Engineer
and Land Surveyor

Fred B. Kerr, Jr.

Certificate No.

3950



dated, and published by the Geological
 Survey, NOS/NOAA, and U. S. Bureau of Reclamation
 by photogrammetric methods from aerial
 photographs taken 1964 and by plane-table surveys of the
 area in 1965. Field checked by USGS
 personnel. 1927 North American datum
 used. Elevation based on New Mexico coordinate system.
 Universal Transverse Mercator grid to 100
 feet in 1000 feet.
 Contour interval 100 feet.

Vicinity Map for
 HICKS ENCO, INC. #38 SE CHA CHA
 2100' FSL 990' FWL Sec. 22-T28N-R13W
 SAN JUAN COUNTY, NEW MEXICO

Scale
 1 inch = 1 mile
 1:62,500
 Contour
 100 feet
 1:62,500
 1:62,500

PREPARED BY THE GEOLOGICAL SURVEY
 OF THE UNITED STATES DEPARTMENT OF THE INTERIOR

HICKS ENCO, INC.

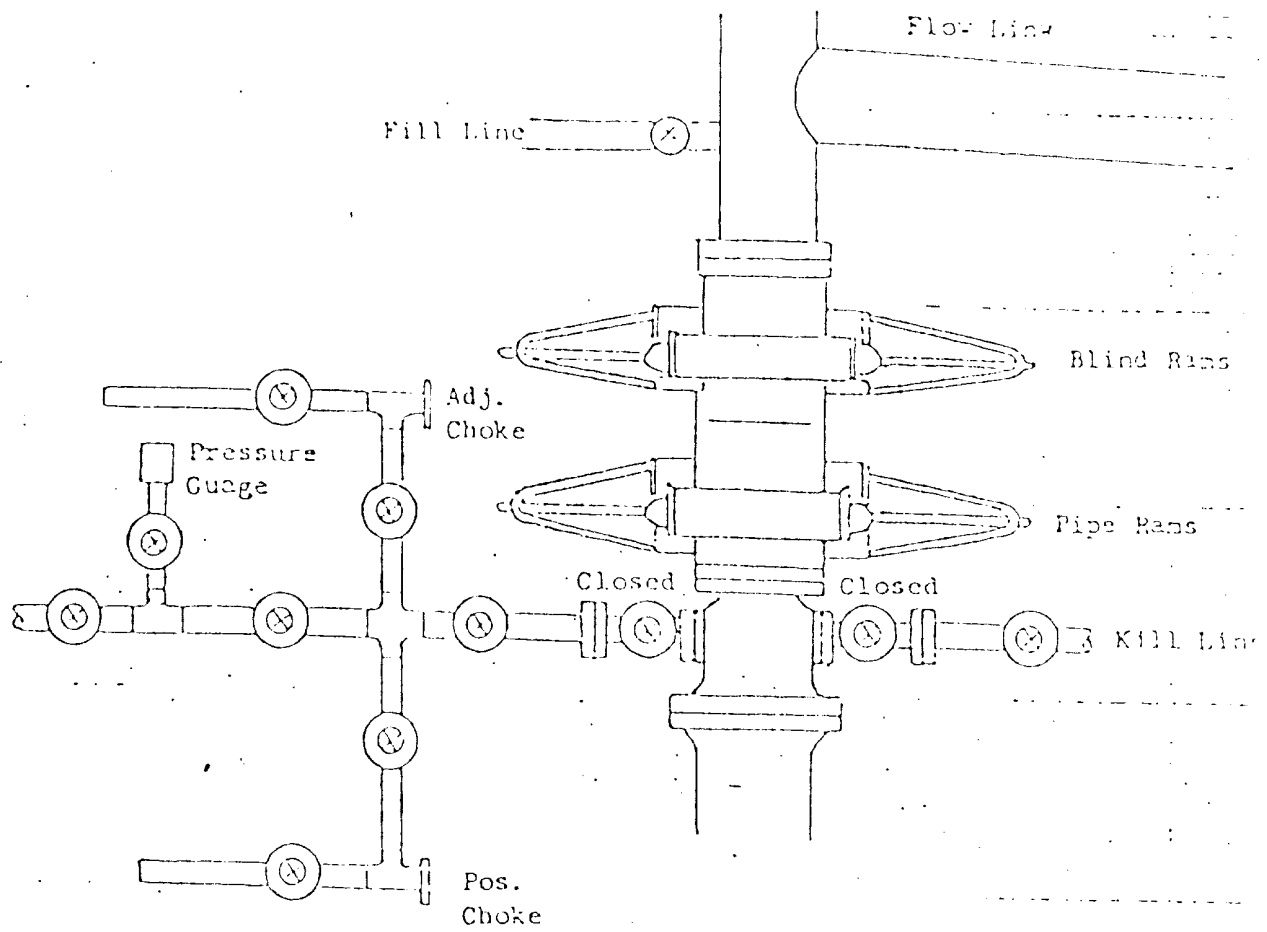
P.O. Box 174 ~~XXX SANTIAGO~~ PHONE: (505) ~~325-3950~~ 327-4902
FARMINGTON, NEW MEXICO 87401

PLAN OF OPERATION FOR DRILLING AND COMPLETION OF SOUTHEAST CHA CHA #38

1. Existing roads - See enclosed topographic map #1
2. Planned access roads - See enclosed topographic map #1. Existing and new roads will be improved and widened to 20' where necessary. Culverts will be installed where necessary.
3. Location of existing wells - See enclosed topographic map #1
4. Tanks and production facilities are as shown by small squares on the topographic map #1. All presently installed.
5. Water supplied from San Juan River approximately 8 miles north.
6. No construction material will be required.
7. A burn pit for disposal of waste will be provided. It will be covered later.
8. No ancillary facilities will be required.
9. Well site layout - See attached plat
10. When pits are in suitable condition for filling they will be filled. All disturbed surfaces will be seeded as instructed by the B.L.M.
11. Other information - See Archaeological Survey.
12. Operators Representative:
J D Hicks
P. O. Box 174
Farmington, New Mexico 87401
303-327-4902 (Business) 505-325-3950(Home)
13. I hereby certify that I, or persons under my direct supervision, have inspected the proposed drillsite and access route; that I am familiar with the conditions which presently exist; that the statements made in this plan are, to the best of my knowledge, true and correct; and, that the work associated with the operations proposed herein will be performed by *Hicks, Enco, Inc.* and its contractors and sub-contractors in conformity with this plan and the terms and conditions under which it is approved.

12/12/80
Date

, President
J D Hicks



All valves 2"

All BOPs, flanges, spools, valves, & lines must be series 900 or 3000 psi working press.

Choke manifold must be at ground level and extended out from under substructure.

HICKS ENCO, INC.
FARMINGTON, NEW MEXICO

REQUIRED MINIMUM BLOWOUT PREVENTOR

ROCKUP

Drilling Well Site Layout

