

UNITED STATES
DEPARTMENT OF THE INTERIOR
GEOLOGICAL SURVEY

APPLICATION FOR PERMIT TO DRILL, DEEPEN, OR PLUG BACK

1. TYPE OF WORK

DRILL ☒DEEPEN ☐PLUG BACK ☐

2. TYPE OF WELL

OIL
WELL ☐GAS
WELL ☒OTHER ☐SINGLE
ZONE ☒MULTIPLE
ZONE ☐

3. NAME OF OPERATOR

AMOCO PRODUCTION COMPANY

4. ADDRESS OF OPERATOR

501 Airport Drive, Farmington, New Mexico

5. LOCATION OF WELL (Report location clearly and in accordance with any State requirements.)*

At surface

800' FNL and 1110' FEL

At proposed prod. zone

6. DISTANCE IN MILES AND DIRECTION FROM NEAREST TOWN OR POST OFFICE*

5 5/8 miles SE of Farmington, New Mexico

7. DISTANCE FROM PROPOSED*

LOCATION TO NEAREST
PROPERTY OR LEASE LINE, FT.
(Also to nearest drlg. unit line, if any)

800'

8. DISTANCE FROM PROPOSED LOCATION*

TO NEAREST WELL, DRILLING, COMPLETED,
OR APPLIED FOR, ON THIS LEASE, FT.

3330'

9. NO. OF ACRES IN LEASE

624

10. PROPOSED DEPTH

6105'

11. NO. OF ACRES ASSIGNED
TO THIS WELL

E/320

12. ROTARY OR CABLE TOOLS

Rotary

13. ELEVATIONS (Show whether DF, RT, GR, etc.)

5716' GL

14. APPROX. DATE WORK WILL START*

As soon as permitted

15.

PROPOSED CASING AND CEMENTING PROGRAM

SIZE OF HOLE	SIZE OF CASING	WEIGHT PER FOOT	SETTING DEPTH	QUANTITY OF CEMENT
12 1/4"	8 5/8" (New)	24.7 K-55	300'	300 sx Class "B" w/2% CaCl2-circ
7 7/8"	4 1/2" (NEW)	10.5# K-55	6105'	

This application to drill an Infill Basin Dakota well is pursuant to Order No. R-1670-V approved by the NMOC on May 22, 1979. This well will qualify under Section 103 of the Natural Gas Policy Act under Order No. R-1670-V. The gas from this well is not dedicated.

DV Tool Set at 3920'.

Stage 1-350 sx Class "B" 50/50
POZ 6% gel, 2# med tuf plug/sx,
and 0.8% FLA. Tail in w/100 sx
Class "B" Neat-circ.
Stage 2-990 sx Class "B" 65/35
POZ, 6% gel, 2# med tuf plug/sx,
and 0.8% FLA. Tail in w/100 sx
Class "B" Neat-circ.

IN ABOVE SPACE DESCRIBE PROPOSED PROGRAM: If proposal is to deepen or plug back, give data on present productive zone and proposed new productive zone. If proposal is to drill or deepen directionally, give pertinent data on subsurface locations and measured and true vertical depths. Give blowout preventer program, if any.

16.

SIGNED

TITLE

District Engineer

DATE

2/20/81

(This space for Federal or State office use)

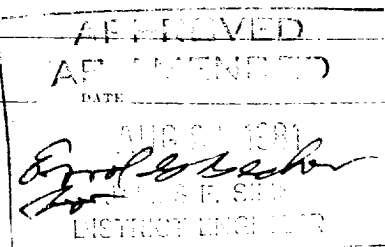
PERMIT NO.

APPROVAL DATE

APPROVED BY

TITLE

CONDITIONS OF APPROVAL, IF ANY:



OIL CONSERVATION DIVISION

STATE OF NEW MEXICO

P. O. BOX 2088

Form C-107

Revised 10-1-78

ENERGY AND MINERALS DEPARTMENT

SANTA FE, NEW MEXICO 87501

All distances must be from the outer boundaries of the Section.

Operator AMOCO PRODUCTION COMPANY			Lease GALLEGOS CANYON UNIT		Well No. 192E
Unit Letter A	Section 30	Township 28N	Range 12W	County San Juan	
Actual Footage Location of Well:					
800	feet from the North	line and 1110	feet from the East	line	
Ground Level Elev. 5716	Producing Formation Dakota	Pool Basin Dakota		Dedicated Acreage: 320	Acrea

1. Outline the acreage dedicated to the subject well by colored pencil or hachure marks on the plat below.
2. If more than one lease is dedicated to the well, outline each and identify the ownership thereof (both as to working interest and royalty).
3. If more than one lease of different ownership is dedicated to the well, have the interests of all owners been consolidated by communitization, unitization, force-pooling, etc?

☒ Yes ☐ No If answer is "yes," type of consolidation Unitization

If answer is "no," list the owners and tract descriptions which have actually been consolidated. (Use reverse side of this form if necessary.)

No allowable will be assigned to the well until all interests have been consolidated (by communitization, unitization, forced-pooling, or otherwise) or until a non-standard unit, eliminating such interests, has been approved by the Commission.

Scale: 1"=1000'

CERTIFICATION

I hereby certify that the information contained herein is true and complete to the best of my knowledge and belief.

Wayne Peterson

Name

W. L. Peterson

Position

District Engineer

Company

Amoco Production Company

Date

1-6-81

I hereby certify that the well location shown on this plat was plotted from field notes of actual surveys made by me or under my supervision, and that the same is true and correct to the best of my knowledge and belief.

Date Surveyed

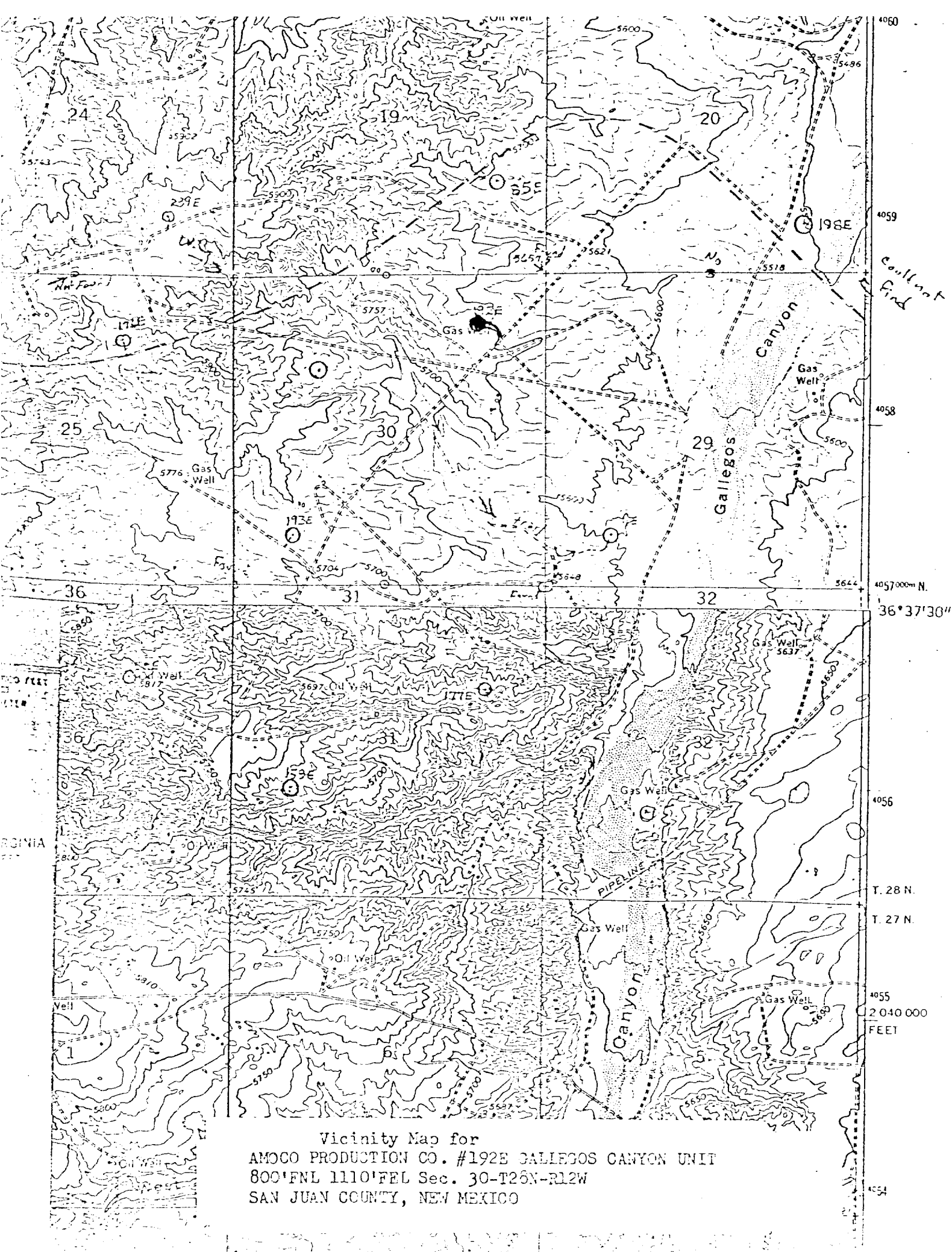
December 6, 1980

Registered Professional Engineer and Land Surveyor

Fred B. Kert Jr.

Certificate No. 3950

FRED B. KERT JR.



Vicinity Map for
AMOCO PRODUCTION CO. #192E GALLEGOS CANYON UNIT
800'FNL 1110'FEL Sec. 30-T26N-R12W
SAN JUAN COUNTY, NEW MEXICO