

UNITED STATES  
DEPARTMENT OF THE INTERIOR  
GEOLOGICAL SURVEY

30-045-25449

APPLICATION FOR PERMIT TO DRILL, DEEPEN, OR PLUG BACK

1a. TYPE OF WORK  
DRILL ☒ DEEPEN ☐ PLUG BACK ☐  
b. TYPE OF WELL  
OIL WELL ☐ GAS WELL ☒ OTHER Infill SINGLE ZONE ☒ MULTIPLE ZONE ☐

2. NAME OF OPERATOR  
Amoco Production Company

3. ADDRESS OF OPERATOR  
501 Airport Dr., Farmington, NM 87401

4. LOCATION OF WELL (Report location clearly and in accordance with any State requirements.)\*  
At surface  
870' FNL and 300' FWL, Section 23, T28N, R12W  
At proposed prod. zone  
Same

14. DISTANCE IN MILES AND DIRECTION FROM NEAREST TOWN OR POST OFFICE\*  
10 miles Southeast of Farmington, NM

15. DISTANCE FROM PROPOSED\*  
LOCATION TO NEAREST  
PROPERTY OR LEASE LINE, FT.  
(Also to nearest drlg. unit line, if any) 800'

18. DISTANCE FROM PROPOSED LOCATION\*  
TO NEAREST WELL, DRILLING, COMPLETED,  
OR APPLIED FOR, ON THIS LEASE, FT. 3700'

21. ELEVATIONS (Show whether DF, RT, GR, etc.)  
5758' GL

23. PROPOSED CASING AND CEMENTING PROGRAM

SIZE OF HOLE	SIZE OF CASING	WEIGHT PER FOOT	SETTING DEPTH
12-1/4"	8-5/8" (New)	24# K-55	300'
7-7/8"	4-1/2" (New)	10.5# K-55	6500'

5. LEASE DESIGNATION AND SERIAL NO.

SF-078828

6. IF INDIAN, ALLOTTEE OR TRIBE NAME

7. UNIT AGREEMENT NAME

Gallegos Canyon Unit

8. FARM OR LEASE NAME

9. WELL NO.

219E

10. FIELD AND POOL, OR WILDCAT

Basin Dakota

11. SEC., T., R., M., OR BLK.  
AND SURVEY OR AREA

NW/4, NW/4, Section 23,  
D T28N, R12W

12. COUNTY OR PARISH 13. STATE

San Juan NM

17. NO. OF ACRES ASSIGNED  
TO THIS WELL

N 320

20. ROTARY OR CABLE TOOLS

Rotary

22. APPROX. DATE WORK WILL START\*

As soon as permitted

This application to drill an Infill Basin Dakota well is pursuant to Order No. R-1670-V approved by the NMOCC on May 22, 1979. This well will qualify under Section 103 of the Natural Gas Policy Act under Order No. R-1670-V.

The gas from this well is dedicated to El Paso Natural Gas Co.

DV Tool set at 4335'.

IN ABOVE SPACE DESCRIBE PROPOSED PROGRAM: If proposal is to deepen or plug back, give data on present productive zone and proposed new productive zone. If proposal is to drill or deepen directionally, give pertinent data on subsurface locations and measured and true vertical depths. Give blowout preventer program, if any.

24. Original Signed By  
SIGNED D. H. SHOEMAKER TITLE District Engineer DATE 8-30-82

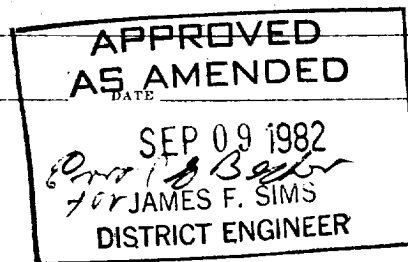
(This space for Federal or State office use)

PERMIT NO. APPROVAL DATE

APPROVED BY TITLE

CONDITIONS OF APPROVAL, IF ANY:

h2



All distances must be from the outer boundaries of the Section.

Operator <b>AMOCO PRODUCTION COMPANY</b>			Lease <b>GALLEGOS CANYON UNIT</b>		Well No. <b>219-E</b>
Unit Letter <b>D</b>	Section <b>23</b>	Township <b>28N</b>	Range <b>12W</b>	County <b>San Juan</b>	
Actual Footage Location of Well: <b>870</b> feet from the <b>North</b> line and <b>800</b> feet from the <b>West</b> line					
Ground Level Elev. <b>5758</b>	Producing Formation <b>Dakota</b>		Pool <b>Basin Dakota</b>		Dedicated Acreage: <b>~ 320</b> Acres

1. Outline the acreage dedicated to the subject well by colored pencil or hatchure marks on the plat below.
2. If more than one lease is dedicated to the well, outline each and identify the ownership thereof (both as to working interest and royalty).
3. If more than one lease of different ownership is dedicated to the well, have the interests of all owners been consolidated by communitization, unitization, force-pooling, etc?

☒ Yes ☐ No If answer is "yes," type of consolidation Unitization (Gallegos Canyon Unit)

If answer is "no," list the owners and tract descriptions which have actually been consolidated. (Use reverse side of this form if necessary.)

No allowable well be assigned to the well until all interests have been consolidated (by communitization, unitization, forced-pooling, or otherwise) or until a non-standard unit, eliminating such interests, has been approved by the Commission.

870'		800'	
SF-078828		SF-078904	
Sec.		23	
Amoco operates Gallegos Canyon Unit with a 51.7% working interest.			
RECEIVED SEP 10 1980 OIL CON. DIST. 3		RECEIVED AUG 31 1980	

#### CERTIFICATION

I hereby certify that the information contained herein is true and complete to the best of my knowledge and belief.

*B. E. Fackrell*

Name

B. E. FACKRELL

Position

DISTRICT ENGINEER

Company

AMOCO PRODUCTION COMPANY

Date

FEBRUARY 6, 1980

I hereby certify that the well location shown on this plat was plotted from field notes of actual surveys made by me or under my supervision, and that the same is true and correct to the best of my knowledge and belief.

Date Surveyed

January 29, 1980

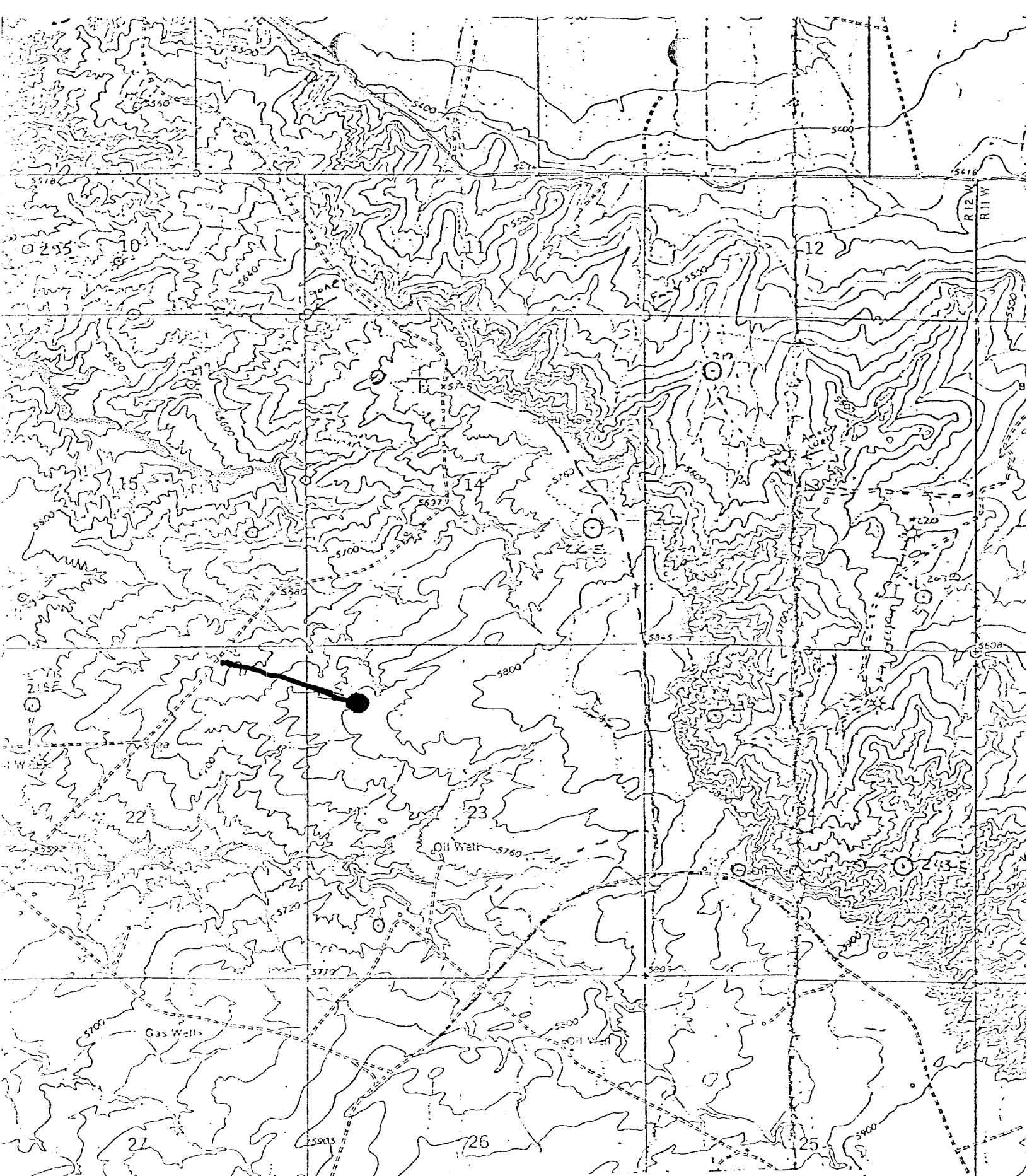
Registered Professional Engineer  
and/or Licensed Surveyor

*Fred B. Kerr, Jr.*  
Fred B. Kerr, Jr.

Certification No.

3950

0 330 660 990 1320 1650 1980 2310 2640 2970 3300 3630 3960 4290 4620 4950 5280 5610 5940 6270 6600



Vicinity Map for  
AMOCO PRODUCTION COMPANY #219-E GALLEGOS CANYON UNIT  
870'FNL 800'FWL Sec 23-T23N-R12W  
SAN JUAN COUNTY, NEW MEXICO