

DEPARTMENT OF THE INTERIOR
BUREAU OF LAND MANAGEMENT

Sundry Notices and Reports on Wells

RECEIVED
SEP 13 1996

96 SEP - 9 PM 2:16

OTO FARMINGTON, NM

1. Type of Well
GAS

2. Name of Operator

MERIDIAN OIL

3. Address & Phone No. of Operator

PO Box 4289, Farmington, NM 87499 (505) 326-9700

4. Location of Well, Footage, Sec., T, R, M

1839' FSL, 697' FEL, Sec. 24, T-28-N, R-11-W, NMPM

NSL-3677

5. Lease Number

SF-047017B

6. If Indian, All. or
Tribe Name

7. Unit Agreement Name

8. Well Name & Number

Angel Peak B #45

9. API Well No.

30-045-25688 25668

10. Field and Pool

Blanco Mesaverde/
Armenta Gallup

11. County and State

San Juan Co, NM

12. CHECK APPROPRIATE BOX TO INDICATE NATURE OF NOTICE, REPORT, OTHER DATA

Type of Submission

☒ Notice of Intent

☐ Subsequent Report

☐ Final Abandonment

Type of Action

☐ Abandonment

☒ Recompletion

☐ Plugging Back

☐ Casing Repair

☐ Altering Casing

☒ Other - abandon Gallup formation

☒ Change of Plans

☐ New Construction

☐ Non-Routine Fracturing

☐ Water Shut off

☐ Conversion to Injection

13. Describe Proposed or Completed Operations

It is intended to recompleate the subject well in the Mesaverde formation according to the attached revised procedure and wellbore diagram. The Gallup formation will be abandoned with a cement squeeze.

RECEIVED
SEP 13 1996

OIL CON. DIV.
DIST. 3

14. I hereby certify that the foregoing is true and correct.

Signed Reggie Shannon (KKK2) Title Regulatory Administrator Date 9/4/96

(This space for Federal or State Office use)

APPROVED BY _____ Title _____

CONDITION OF APPROVAL, if any:

Date **APPROVED**

SEP 10 1996

Sharon Sp...
DISTRICT MANAGER

MOCD

ANGEL PEAK B #45
Recommend Recompletion Procedure
NE/SE Section 24 T28N R11W
Lat. 36.645462 Long. 107.947968
REVISED 8/26/96

1. Test rig anchors and repair if necessary. Install 8-400 bbl frac tanks on location and fill with 1% KCl water for fracture treatment. Filter all water to 25 microns. Heat water as required by weather.
2. MOL and RU. Comply to all NMOCD, BLM and MOI rules and regulations. Hold safety meeting. ND wellhead. NU BOP. Test operation of rams. NU two relief lines.
3. TOOH with 5869' of 2-3/8" tubing. Check wellbore diagram for configuration. Visually inspect for and replace all bad jts.
4. TIH on 2-3/8" tubing with 7" casing scraper and 6-1/4" bit. Clean out to top of liner hanger at 5154'. TOOH.
5. TIH with 2-3/8" tubing with 4-1/2" casing scraper and 3-7/8" bit. Clean out 4-1/2" liner from 5154' to PBTB at 6311' with air.
6. Blow to pit until sand production is minimal to absent. When well is clean, take 15, 30, 45 and 60 minute pitot gauges. TOOH.
7. Set 7" cmt ret at 4800' on 2-3/8" tubing. Sq Gallup w/302 sx Cl "G" cmt. PU & spot 5 sx cmt on top cmt ret. PU & load hole with 1% KCl water. TOOH.
8. RU wireline and run CBL/CCL/GR from 4800' to 2900' under 1000 psi surface pressure. TIH with 7" full-bore packer and 60' of 2-3/8" tubing and pressure test casing to 3400 psi. If pressure test does not hold, TIH with packer and tubing and locate casing failure. Contact Production Engineering and a casing repair procedure will be provided. Release packer and TOOH.

***** Lower Point Lookout *****

9. TIH w/2-3/8" tbg to 4610' & spot 250 gal 15% HCL acid across proposed Menefee perms. Use same additives as in breakdown.
10. Perforate with 4" Conventional HSC with centralizers and charges meeting requirements for average penetration in Berea of 12.0" and average perf diameter of 0.28". Perforate the following Lower Point Lookout intervals with 1 spf. Perforate from the top down using centralizers.

4486' - 4490'	(4)	4537' - 4550'	(13)
4512' - 4518'	(6)	4554' - 4560'	(6)
		4606' - 4610'	(4)

Total: 33 holes.

11. TIH with 7" full bore packer on 2-3/8" tubing and set at 4200'. RU stimulation company and prepare to breakdown and balloff with acid. Pump 1500 gal. of 15% HCl at about 20 bbls/min and slow rate down to 10 bbls/min prior to ball hitting. Drop a total of 82 7/8" 1.3 sp. gr. RCN ball sealers spaced evenly throughout the job. Record injection rate and all breakdown pressures throughout job. **Maximum pressure is 4300 psi.** Acid should contain clay stabilizer, corrosion inhibitor, and iron sequestering agent. Lower Pkr to 4620 to knock off perf balls. TOH.


ANGEL PEAK B #45
Recommend Recompletion Procedure
NE/SE Section 24 T28N R11W
Page 2

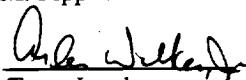
12. TIH with 7" full-bore packer on 2 jts 2-7/8" N-80 tubing and set at 60' only if casing tested. If casing squeeze was required, TIH to below squeeze hole with 7" packer and 3-1/2" frac string. RU stimulation company. Hold safety meeting. **Maximum treating pressure is 3400 psi. Stimulation will be with slickwater and 70,000 lbs. of 20/40 Arizona sand @ 60 BPM.** Flush to the top perf. (Under flush if well is on vacuum).

<u>Stage</u>	<u>Fluid Vol.</u> <u>(Gals.)</u>	<u>Sand Vol.</u> <u>(lbs.)</u>
Pad	20,000	---
0.5 ppg	10,000	5,000
1.0 ppg	50,000	50,000
1.5 ppg	10,000	15,000
Flush	<u>(7,400)</u>	<u>0</u>
Totals	90,000#	70,000#

Shut-in well immediately after stimulating well to keep in static condition. Release packer and TOOH.

13. TIH with notched collar on 2-3/8" tubing and clean out to cmt ret @ 4800' until sand returns and water production are minimal. Obtain pitot gauges. TOOH.
14. TIH with 2-3/8" tubing with standard seating nipple and one joint above open ended bottom. Tag fill and do final cleanout if necessary. Land tubing string @ 4500'..
15. ND BOP and NU wellhead. **Take final Pitot gauge and gas, oil and water samples.**
16. Rig down and release rig.

Recommended:  8/26/96
P.M. Pippin

Approve:  8/29/96
Team Leader

Approve: 
Drilling Superintendent

VENDORS:

Wireline:
Fracturing:

Basin Perforating
BJ

pmp

ANGEL PEAK B #45

CURRENT

ARMENTA GALLUP

UNIT I, SEC 24, T28N, R11W, SAN JUAN COUNTY, NM

COMPLETED 8/25/83

OJO ALAMO @ 630'
KIRTLAND @ 925'

FRUITLAND @ 1450'

PICTURED CLIFFS @ 1910'

LEWIS @ 2020'

CHACRA @ 2410'

CLIFF HOUSE @ 3450'

POINT LOOKOUT @ 4250'

MANCOS @ 4560'

7" 23.0# K-55 LT&C
CSG SET @ 5361'
GALLUP @ 5450'

LINER
CMT W/192 CU FT 50/50 POZ

GREENHORN @ 6210'

9-5/8" 36.00# K-55 ST&C
CSG SET @ 321'
(330 CUFT CIRC 15 BBLS TO SURFACE)

INTERMEDIATE

1st STAGE, CMT W/825 CU FT 65/35 POZ
& 118 CU FT CLASS "B"
2nd STAGE, CMT W/880 CU FT 65/35 POZ
& 118 CU FT CLASS "B"

DV TOOL @ 2133'

2-3/8" 4.7# J-55 EUE TBG SET @ 5869'

LINER HANGER TOP SET
@ 5154'

PERF GP 5453'-6004' FRAC W/ 203,900 GAL 70Q
FOAM & 250,000# 20/40 SAND ACIDIZED GP W/
1900 GAL 15% HCL

PERF GREENHORN 6212'-6266' ACIDIZE W/ 1500
GAL 15% HCL

4-1/2" 11.6# K-55 ST&C LINER SET @ 5154'-6360'
CMT W/ 192 CU FT
CIRC 0 BBLS CMT TO SURFACE

TD 6362'
PBT
6311'

Pertinent Data Sheet - Angel Peak B #45

Location: 1839' FSL & 697' FEL, Unit I, Section 24, T28N, R11W, San Juan County, New Mexico

Field: Armenta Gallup

Elevation: 5920' RKB
5908' GR

TD: 6362'
PBTD: 6311'

Completed: 8-25-83

Spud Date: 8-6-83

DP #: 32453A

Casing Record:

<u>Hole Size</u>	<u>Csg Size</u>	<u>Wt. & Grade</u>	<u>Depth Set</u>	<u>Cement (Top)</u>
13-1/2"	9-5/8"	36.00# K-55 ST&C	321'	330 cu. ft. (surface)
8-3/4"	7"	23.00# K-55 LT&C	5361'	1941 cu. ft. (surface, 2 Stages)
6-1/4"	4-1/2"	11.60# K-55	5154'-6360'	192 CU FT

DV Tool @ 2133'

Liner Hanger top @ 5154'

Cement:

Surface: 330 cu. ft. Class "B" w/3% CaCl₂ and 1/4# Flocele per sack.

1st stage:

825 cu. ft. of 65-35 Poz. with 12% gel, 1/4 lb. of Flocele, 12-1/4 lb. of Gilsonite, and 118 cu. ft. of class "B" with 2% CaCl₂

2nd Stage:

880 cu. ft. of 65-35 Poz. with 12% gel, 1/4 lb. of Flocele, 12-1/4 lb. of Gilsonite, and 118 cu. ft. of class "B" with 2% CaCl₂

Liner: 192 cu. ft. 50/50 Pozmix w/2% Gel, .6% FLA, 1/4 # Flocele and 10# salt per sack.

Tubing Record:

<u>Tbg. Size</u>	<u>Wt. & Grade</u>	<u>Depth Set</u>
2-3/8"	4.70# J-55 EUE	5869'

Formation Tops:

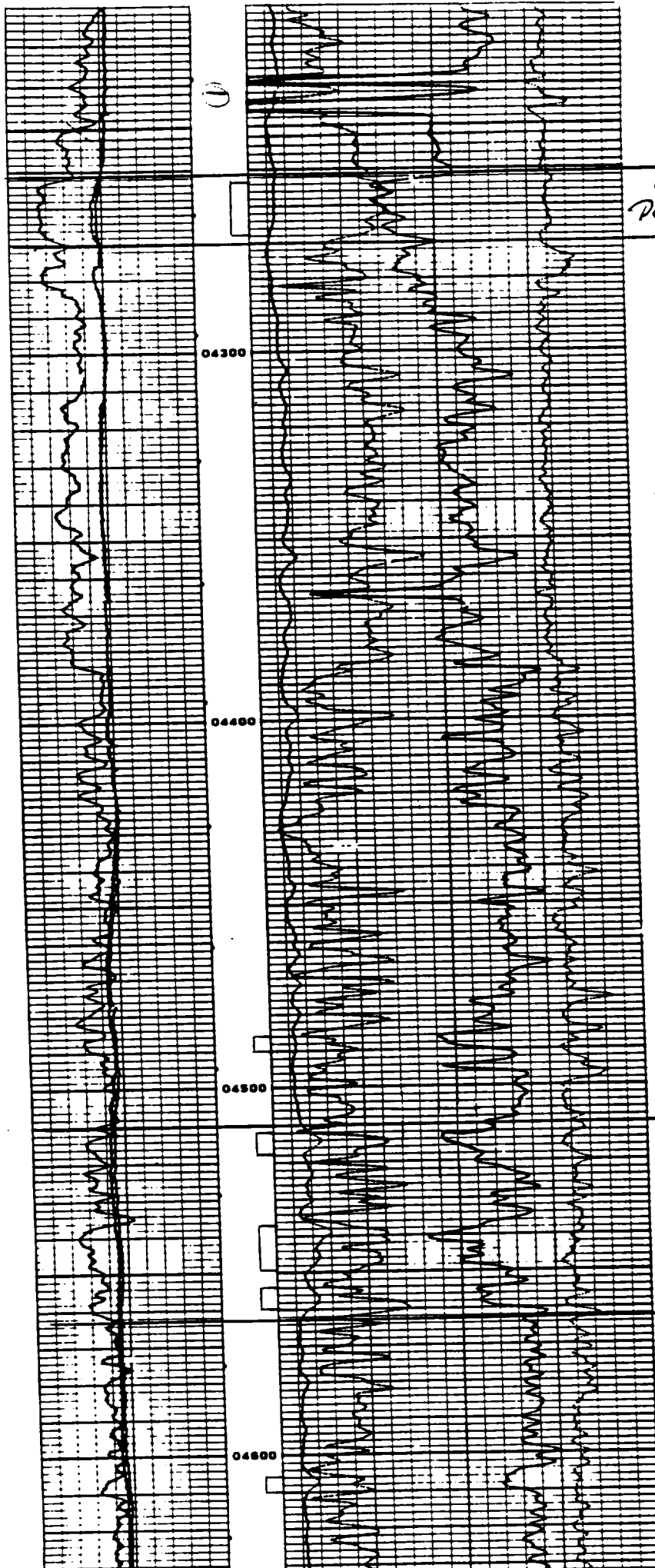
Ojo Alamo:	630'	Chacra:	2410'
Kirtland Shale:	925'	Cliffhouse:	3450'
Fruitland:	1450'	Point Lookout:	4250'
Pictured Cliffs:	1910'	Mancos:	4560'
Lewis:	2020'	Gallup:	5450'
		Greenhorn:	6210'

Logging Record: CDL-GR-CNL; IEL-GR

Stimulation: Perf Gallup: 5453'-6004' Frac w/ 203,900 gal 70Q Foam & 250,000# 20/40 Sand acidized w/ 1900 gal 15% HCL

Perf Greenhorn: 6212'-6266' Acidize w/ 1500 Gal 15% HCL

Workover History: NONE



UPPER
POINT LOOKOUT

ANGEL PEARL
-B' #45

SE 24-28N-11W

RECOMMENDED PERF
INTERVALS MARKED

LOWER
POINT
LOOKOUT