

UNITED STATES
DEPARTMENT OF THE INTERIOR
GEOLOGICAL SURVEY

APPLICATION FOR PERMIT TO DRILL, DEEPEN, OR PLUG BACK

1a. TYPE OF WORK
DRILL ☒ DEEPEN ☐ PLUG BACK ☐

b. TYPE OF WELL
OIL WELL ☒ GAS WELL ☐ OTHER ☐ SINGLE ZONE ☒ MULTIPLE ZONE ☐

2. NAME OF OPERATOR
Union Texas Petroleum Corporation

3. ADDRESS OF OPERATOR
P. O. Box 808, Farmington, New Mexico 87499

4. LOCATION OF WELL (Report location clearly and in accordance with any State recording laws.)
At surface 2310 ft./South line and 1650 ft./West line
At proposed prod. zone Same as above

5. LEASE DESIGNATION AND SERIAL NO.
SE 047017-B

6. IF INDIAN, ALLOTTEE OR TRIBE NAME

7. UNIT AGREEMENT NAME

8. FARM OR LEASE NAME
Angel Peak "B"

9. WELL NO.
36

10. FIELD AND POOL, OR WILDCAT
Undesignated Gallup

11. SEC., T., R., M., OR BLK. AND SURVEY OR AREA
Sec. 25, T-28N, R-11W, N.M.P.M.

12. COUNTY OR PARISH
San Juan

13. STATE
New Mexico

14. DISTANCE IN MILES AND DIRECTION FROM NEAREST TOWN OR POST OFFICE*
5 miles Southeast of Bloomfield, New Mexico

15. DISTANCE FROM PROPOSED* LOCATION TO NEAREST PROPERTY OR LEASE LINE, FT. (Also to nearest drlg. unit line, if any)
1650 ft. 330 ft.

16. NO. OF ACRES IN LEASE
1894.08

17. NO. OF ACRES ASSIGNED TO THIS WELL
40.00

18. DISTANCE FROM PROPOSED LOCATION* TO NEAREST WELL, DRILLING, COMPLETED, OR APPLIED FOR, ON THIS LEASE, FT.
270 ft.

19. PROPOSED DEPTH
5800'

20. ROTARY OR CABLE TOOLS
Rotary

21. ELEVATIONS (Show whether DF, RT, or both)
5652' GR

22. APPROX. DATE WORK WILL START*
May 7, 1983

23. "GENERAL REQUIREMENTS" PROPOSED CASING AND CEMENTING PROGRAM
This action is subject to administrative appeal pursuant to 30 CFR 290.

SIZE OF HOLE	SIZE OF CASING	WEIGHT PER FOOT	SETTING DEPTH	QUANTITY OF CEMENT
13-3/4"	9-5/8"	36.0# K-55	300'	250 cu. ft. (circulated)
8-3/4"	7"	26.0# K-55	5100'	1400 cu. ft. (circulated)
6-1/4"	4-1/2"	11.6# K-55	4900 - 5800'	200 cu. ft. (top of liner)

We desire to drill 13-3/4" surface hole to approx. 300 ft. using natural mud as a circulating medium. Run new 9-5/8" casing to TD. Cement with approx. 250 cu. ft. of Class "B" cement circulated to the surface. Pressure test the casing to approx. 800 PSIG for 10 minutes. Drill 8-3/4" hole to approx. 5100 ft. using a starch base, permaloid, non-dispersed mud as the circulating medium. Log the well. Run new 7" casing to TD with a DV tool at approx. 2000 ft. Cement 1st stage with approx. 750 cu. ft. of 65/35/6 followed by approx. 100 cu. ft. of Class "B" cement. Cement the second stage with approx. 450 cu. ft. of 65/35/12 followed by approx. 100 cu. ft. of Class "B". Circulate cement to surface. Drill out the DV tool. Pressure test the pipe to 1500 PSIG for 10 minutes. Drill out with 6-1/4" bit to approx. 5800 ft. using natural gas as the circulating medium. Log the well. Run new 4-1/2" casing to TD and cement with approx. 200 cu. ft. of 50/50 Poz mix. WOC. Perforate and fracture the Gallup zone. Clean the well up. Run new 2-3/8" EUE, 4.7#, J-55 tubing to the Gallup zone. Run rod pump and rods. Set a pumping unit and tanks. Install a pipeline from the wellhead to the existing Rudy Gathering System and test the well. The gas from this well has previously been dedicated to a transporter. NOTE: Actual cement volumes to be calculated from caliper log.

IN ABOVE SPACE DESCRIBE PROPOSED PROGRAM: If proposal is to deepen or plug back, give data on present productive zone. If proposal is to drill or deepen directionally, give pertinent data on subsurface locations and measured and true vertical depths. Give blowout preventer program, if any.

24
SIGNED W. K. Cooper TITLE Field Operations Manager DATE April 6, 1983
(This space for Federal or State office use)

PERMIT NO. APPROVAL DATE
APPROVED BY TITLE DATE
CONDITIONS OF APPROVAL, IF ANY:

OIL CON. DIV.
DIST. 3
APR 10 1983

JAMES F. SIMS
DISTRICT ENGINEER
Acting Area Manager

All distances must be from the outer boundaries of the Section.

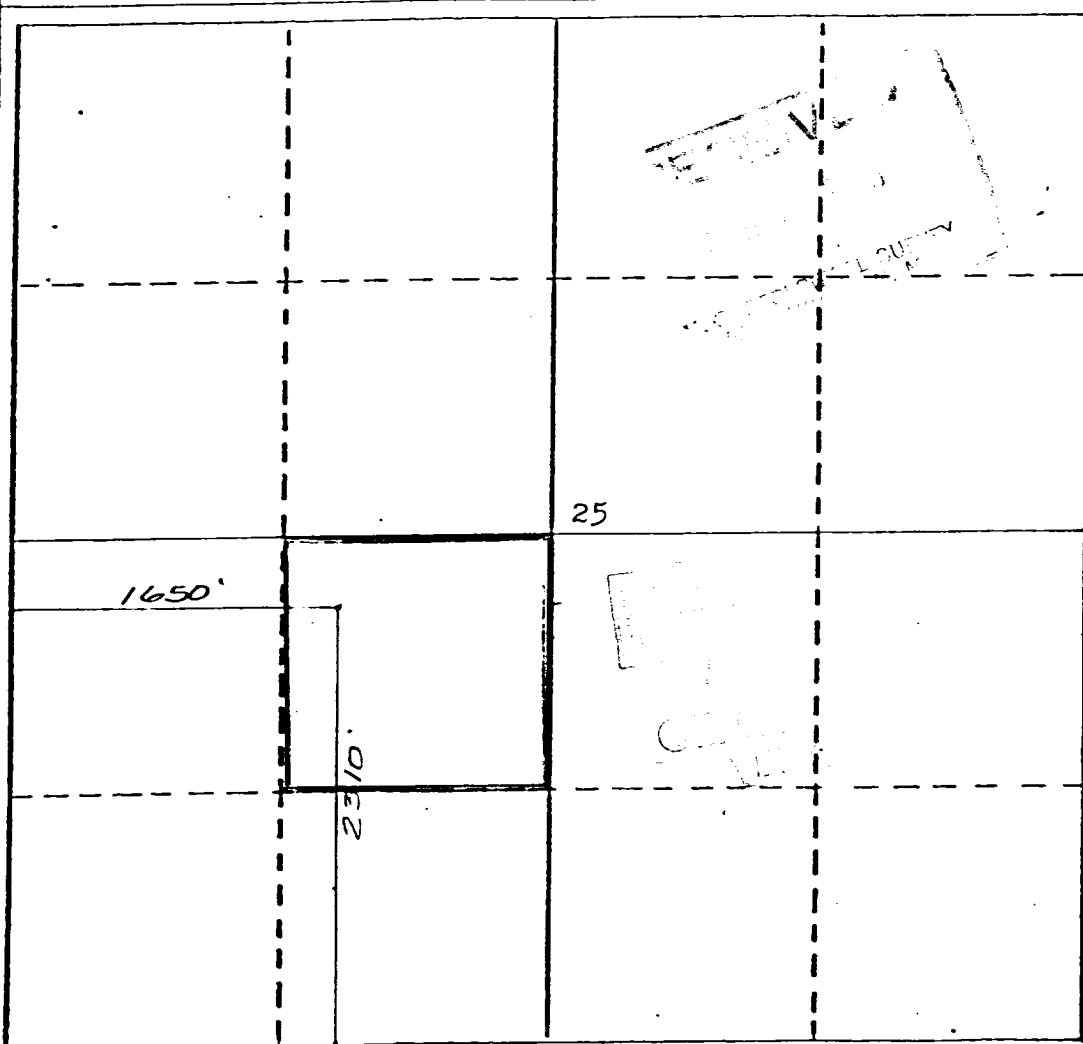
Operator UNION TEXAS PETROLEUM CORPORATION			Lease ANGEL PEAK B		Well No. 36
Unit Letter K	Section 25	Township 28 NORTH	Range 11 WEST	County SAN JUAN	
Actual Footage Location of Well:					
2310 feet from the SOUTH line and		1650 feet from the WEST line			
Ground Level Elev. 5652	Producing Formation Gallup	Pool Wildcat Under	Dedicated Acreage: NE SW 40.00 Acres		

1. Outline the acreage dedicated to the subject well by colored pencil or hatchure marks on the plat below.
2. If more than one lease is dedicated to the well, outline each and identify the ownership thereof (both as to working interest and royalty).
3. If more than one lease of different ownership is dedicated to the well, have the interests of all owners been consolidated by communitization, unitization, force-pooling, etc?

☐ Yes ☒ No If answer is "yes," type of consolidation _____

If answer is "no," list the owners and tract descriptions which have actually been consolidated. (Use reverse side of this form if necessary.) _____

No allowable will be assigned to the well until all interests have been consolidated (by communitization, unitization, forced-pooling, or otherwise) or until a non-standard unit, eliminating such interests, has been approved by the Division



CERTIFICATION

I hereby certify that the information contained herein is true and complete to the best of my knowledge and belief.

Rudy D. Motto
Name

Rudy D. Motto
Position

Area Operations Manager
Company

Union Texas Petroleum Corp.
Date

February 11, 1983

I hereby certify that the well location shown on this plat was plotted from field notes of actual surveys made by me or under my supervision, and that the same is true and correct to the best of my knowledge and belief.

Michael S. Dyer
Data Surveyed
December 27, 1982
Registered Professional Engineer
and Land Surveyor
Michael S. Dyer
Certification No. **5998**

T. 29 N
T. 28 N

CUBA 83 MI
BLANCO TRADING POST 23 MI

T. 28 N
T. 27 N

FARMINGTON 22 MI
BLOOMFIELD 9 MI

4057

4055

4052

4051

4050

4049

4048

UNION TEXAS PETROLEUM CORPORATION
Angel Peak "B" #36
NE $\frac{1}{4}$ SW $\frac{1}{4}$, Sec. 25, T28N, R11W, N.M.P.M.,
San Juan County, New Mexico.

UNION TEXAS PETROLEUM CORPORATION

Angel Peak "B" No. 36

1. The geologic name of the surface formation is "Wasatch".
2. The estimated tops of important geologic markers are:

A. Top of the Ojo Alamo	408	ft.
B. Kirtland	629	ft.
C. Fruitland	1274	ft.
D. Pictured Cliffs	1585	ft.
E. Chacra	2519	ft.
F. Cliff House	3119	ft.
G. Point Lookout	3926	ft.
H. Gallup	5150	ft.
3. The estimated depths at which anticipated water, oil or other mineral bearing formations are expected to be encountered are:

A. Top of the Ojo Alamo	408	ft.	Water
B. Kirtland	629	ft.	Water
C. Fruitland	1274	ft.	Water
D. Pictured Cliffs	1585	ft.	Gas
E. Chacra	2519	ft.	Gas
F. Cliff House	3119	ft.	Water
G. Point Lookout	3926	ft.	Gas
H. Gallup	5150	ft.	Oil & Gas
4. The casing program is shown on form 9-331C and all casing is new.
5. The lessee's pressure control equipment schematics are attached, along with minimum specifications, testing procedures, and frequencies.
6. The type, estimated volumes, and characteristics of the circulating medium are as follows:

A. 0 - 300 \pm	ft.	Natural Mud
B. 300 \pm - 5100 \pm	ft.	Permaloid non-dispersed mud containing approx. 150 sx. gel, 60 sx. of permaloid and 15 sx. of CMC.
C. 5100 \pm - 5800 \pm	ft.	Natural Mud
7. The auxiliary equipment to be used will be floats at the bit and a sub on the floor with a full opening valve to be stabbed into the drill pipe when the kelly is not in the string.
8. The well is in an area which is partially developed; therefore, we will not have a testing and coring program. The logging program is as follows:

A. G.R. - DIFL
B. GR - CAL
C. F.D.C.- C.N.L.
9. We do not expect to find any abnormal pressures, temperatures or hydrogen sulfide problems in this partially developed area.
10. The anticipated starting date for this well is: May 7, 1983