

UNITED STATES  
DEPARTMENT OF THE INTERIOR  
GEOLOGICAL SURVEY

## APPLICATION FOR PERMIT TO DRILL, DEEPEN, OR PLUG BACK

## 1a. TYPE OF WORK

DRILL ☒DEEPEN ☐PLUG BACK ☐

## b. TYPE OF WELL

OIL  
WELL ☐GAS  
WELL ☒

OTHER

SINGLE  
ZONE ☒MULTIPLE  
ZONE ☐

## 2. NAME OF OPERATOR

Energy Reserves Group, Inc.

## 3. ADDRESS OF OPERATOR

P. O. Box 3280 Casper, Wyoming 82602

## 4. LOCATION OF WELL (Report location clearly and in accordance with any State requirements.)

At surface 970' FSL &amp; 1190' FWL

At proposed prod. zone

## 14. DISTANCE IN MILES AND DIRECTION FROM NEAREST TOWN OR POST OFFICE\*

Approximately 4.5 miles south-southeast of Farmington, N. M.

## 15. DISTANCE FROM PROPOSED\*

LOCATION TO NEAREST  
PROPERTY OR LEASE LINE, FT. 970'  
(Also to nearest drlg. unit line, if any)18. DISTANCE FROM PROPOSED LOCATION\*  
TO NEAREST WELL, DRILLING, COMPLETED,  
OR APPLIED FOR, ON THIS LEASE, FT.

122'

## 16. NO. OF ACRES IN LEASE

27,795.68

## 19. PROPOSED DEPTH

1300'

17. NO. OF ACRES ASSIGNED  
TO THIS WELL

160

## 20. ROTARY OR CABLE TOOLS

Rotary

## 21. ELEVATIONS (Show whether DF, RT, GR, etc.)

G.L. - 5638' (ungraded)

## 23.

## PROPOSED CASING AND CEMENTING PROGRAM

SIZE OF HOLE	SIZE OF CASING	WEIGHT PER FOOT	SETTING DEPTH	QUANTITY OF CEMENT
8 5/8"	7"	23#	225	Cement to surface
6 1/4"	4 1/2"	10.5#	1300	Cement to surface

It is proposed to drill the referenced well with rotary tools from the surface to T.D. The anticipated zone of completion is the Fruitland Formation. Attached is the 10 Point Drilling Plan and the 13 Point Surface Use Plan.

Gas is dedicated to El Paso Natural Gas Co.

APPROVED  
AS AMENDED

RECEIVED

JAN 06 1984

OIL CON. DIV.

DIST. 3

JAN 04 1984

M. MILLENBACH

Asst. AREA MANAGER

IN ABOVE SPACE DESCRIBE PROPOSED PROGRAM: If proposal is to deepen or plug back, give data on present productive zone and proposed new productive zone. If proposal is to drill or deepen directionally, give pertinent data on subsurface locations and measured and true vertical depths. Give blowout preventer program, if any.

## 24.

SIGNED

Paul C. Bertoglio

TITLE Production Engineer RMT

(This space for Federal or State office use)

PERMIT NO.

APPROVAL DATE

APPROVED BY

TITLE

CONDITIONS OF APPROVAL, IF ANY:

APPROVED

AS AMENDED

NOV 14 1983

DATE

AREA MANAGER  
FARMINGTON RESOURCE AREA

NWOLC

## OIL CONSERVATION DIVISION

STATE OF NEW MEXICO  
ENERGY AND MINERALS DEPARTMENTP. O. BOX 2088  
SANTA FE, NEW MEXICO 87501Form C-107  
Revised 10-1-78

All distances must be from the outer boundaries of the Section.

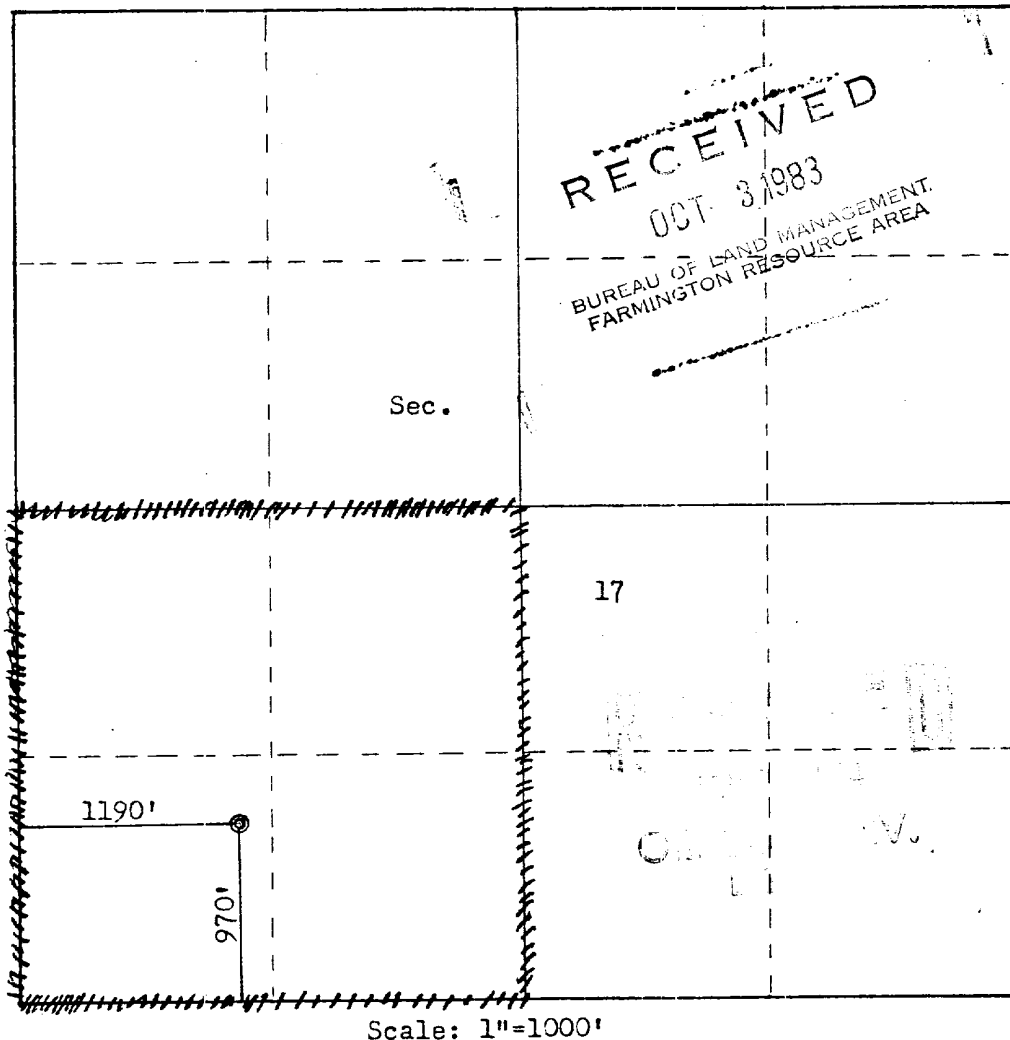
Operator <b>ENERGY RESERVES GROUP, INC.</b>			Lease <b>GALLEGOS CANYON UNIT</b>		Well No. <b>339</b>
Unit Letter <b>M</b>	Section <b>17</b>	Township <b>28N</b>	Range <b>12W</b>	County <b>San Juan</b>	
Actual Footage Location of Well: <b>970</b> feet from the <b>South</b> line and <b>1190</b> feet from the <b>West</b> line					
Ground Level Elev. <b>5638</b>	Producing Formation <b>Fruitland</b>		Pool <b>North Pinon Fruitland</b>		Dedicated Acreage: <b>160</b> Acres

1. Outline the acreage dedicated to the subject well by colored pencil or hachure marks on the plat below.
2. If more than one lease is dedicated to the well, outline each and identify the ownership thereof (both as to working interest and royalty).
3. If more than one lease of different ownership is dedicated to the well, have the interests of all owners been consolidated by communitization, unitization, force-pooling, etc?

☐ Yes ☐ No If answer is "yes," type of consolidation \_\_\_\_\_

If answer is "no," list the owners and tract descriptions which have actually been consolidated. (Use reverse side of this form if necessary.) \_\_\_\_\_

No allowable will be assigned to the well until all interests have been consolidated (by communitization, unitization, forced-pooling, or otherwise) or until a non-standard unit, eliminating such interests, has been approved by the Commission.



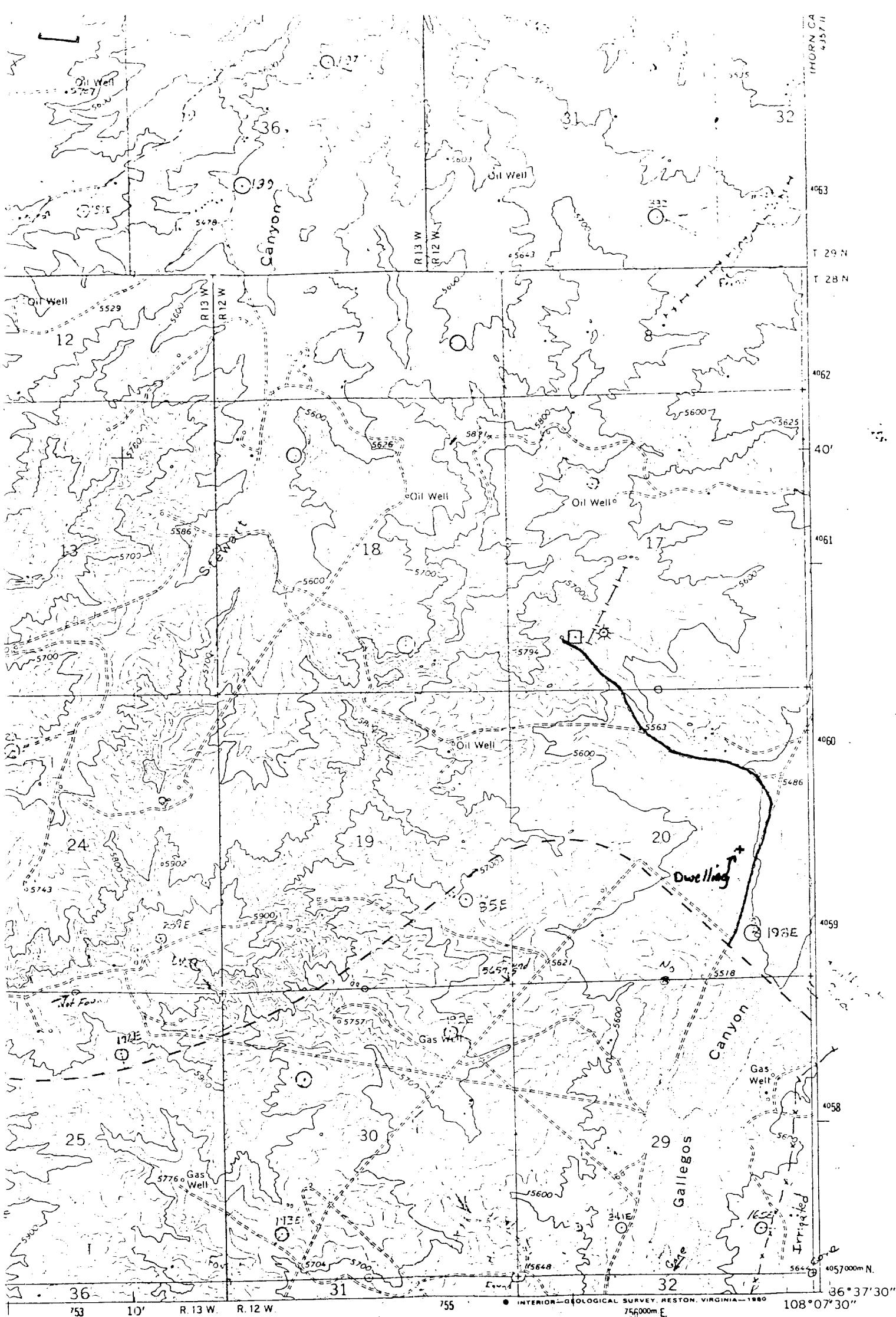
## CERTIFICATION

I hereby certify that the information contained herein is true and complete to the best of my knowledge and belief.

Name  
*Paul C. Bertogler*  
Position  
**Production Engineer**  
Company  
**Energy Reserves Group, Inc.**  
Date  
**September 26, 1983**

I hereby certify that the well location shown on this plat was plotted from field notes of actual surveys made by me or under my supervision, and that the same is true and correct to the best of my knowledge and belief.

Date Surveyed  
**September 13, 1983**  
Registered Professional Engineer and Land Surveyor  
*Fred B. Kerr Jr.*  
Certificate No. **3950**



Vicinity Map for  
 ENERGY RESERVES GROUP, INC. #339 GALLEGOS CANYON UNIT  
 970' FSL 1190' FWL Sec. 17-T28N-R12W  
 SAN JUAN COUNTY, NEW MEXICO

1 MILE  
 1000 FEET  
 1 METER



FARMINGTON SOUTH, N. MEX.  
 N3637 5--W10807 5/7 5

State Route

435711 SE  
 (GALLEGOS  
 TRADING POST)