

UNITED STATES
DEPARTMENT OF THE INTERIOR
GEOLOGICAL SURVEY

APPLICATION FOR PERMIT TO DRILL, DEEPEN, OR PLUG BACK

1a. TYPE OF WORK

DRILL ☒

DEEPEN ☐

PLUG BACK ☐

b. TYPE OF WELL

OIL
WELL ☐

GAS
WELL ☒

OTHER

SINGLE
ZONE ☐

MULTIPLE
ZONE ☒

2. NAME OF OPERATOR

Energy Reserves Group, Inc.

3. ADDRESS OF OPERATOR

P. O. Box 3280; Casper, WY 82602

4. LOCATION OF WELL (Report location clearly and in accordance with any State requirements.)*

At surface

930' FNL, 1,050' FEL

At proposed prod. zone

14. DISTANCE IN MILES AND DIRECTION FROM NEAREST TOWN OR POST OFFICE*

5 1/2 miles east 5-3/4 miles south of Farmington, NM

15. DISTANCE FROM PROPOSED*

LOCATION TO NEAREST
PROPERTY OR LEASE LINE, FT.
(Also to nearest drig. unit line, if any)

930'

18. DISTANCE FROM PROPOSED LOCATION*

TO NEAREST WELL, DRILLING, COMPLETED,
OR APPLIED FOR, ON THIS LEASE, FT.

2,500'

16. NO. OF ACRES IN LEASE

1840

27,794.68

19. PROPOSED DEPTH

1,725'

17. NO. OF ACRES ASSIGNED
TO THIS WELL

160

20. ROTARY OR CABLE TOOLS

Rotary

21. ELEVATIONS (Show whether DF, RT, GR, etc.)

5,806' GR ungraded

DRILLING OPERATIONS AUTHORIZED ARE
SUBJECT TO COMPLIANCE WITH ATTACHED

"GENERAL REQUIREMENTS" DRILLING AND CEMENTING PROGRAM

22. APPROX. DATE WORK WILL START*

Fall 1984 as approved

23.

This action is subject to administrative
appeal pursuant to 30 CFR 290.

SIZE OF HOLE	SIZE OF CASING	WEIGHT PER FOOT	SETTING DEPTH	QUANTITY OF CEMENT
12-1/4"	8-5/8"	20#	120'	Cement to surface
6-1/4"	4-1/2"	10.5#	1,725'	Cement to surface

It is proposed to drill the above well as described on the attached ten point
drilling plan and thirteen point surface use plan.

RECEIVED
OCT 05 1984
OIL CON. DIV.
DIST. 3

IN ABOVE SPACE DESCRIBE PROPOSED PROGRAM: If proposal is to deepen or plug back, give data on present productive zone and proposed new productive zone. If proposal is to drill or deepen directionally, give pertinent data on subsurface locations and measured and true vertical depths. Give blowout preventer program, if any.

24.

SIGNED

William J. H. [Signature]

TITLE Administrator, Field

DATE 9/20/84

Services

(This space for Federal or State office use)

PERMIT NO.

APPROVAL DATE

APPROVED BY

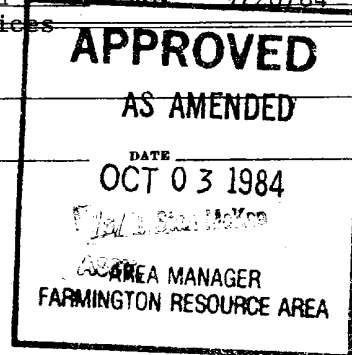
TITLE

DATE

CONDITIONS OF APPROVAL, IF ANY:

ahf

NMOCC



OIL CONSERVATION DIVISION

STATE OF NEW MEXICO
ENERGY AND MINERALS DEPARTMENTP. O. BOX 2088
SANTA FE, NEW MEXICO 87501Form C-107
Revised 10-1-

All distances must be from the outer boundaries of the Section.

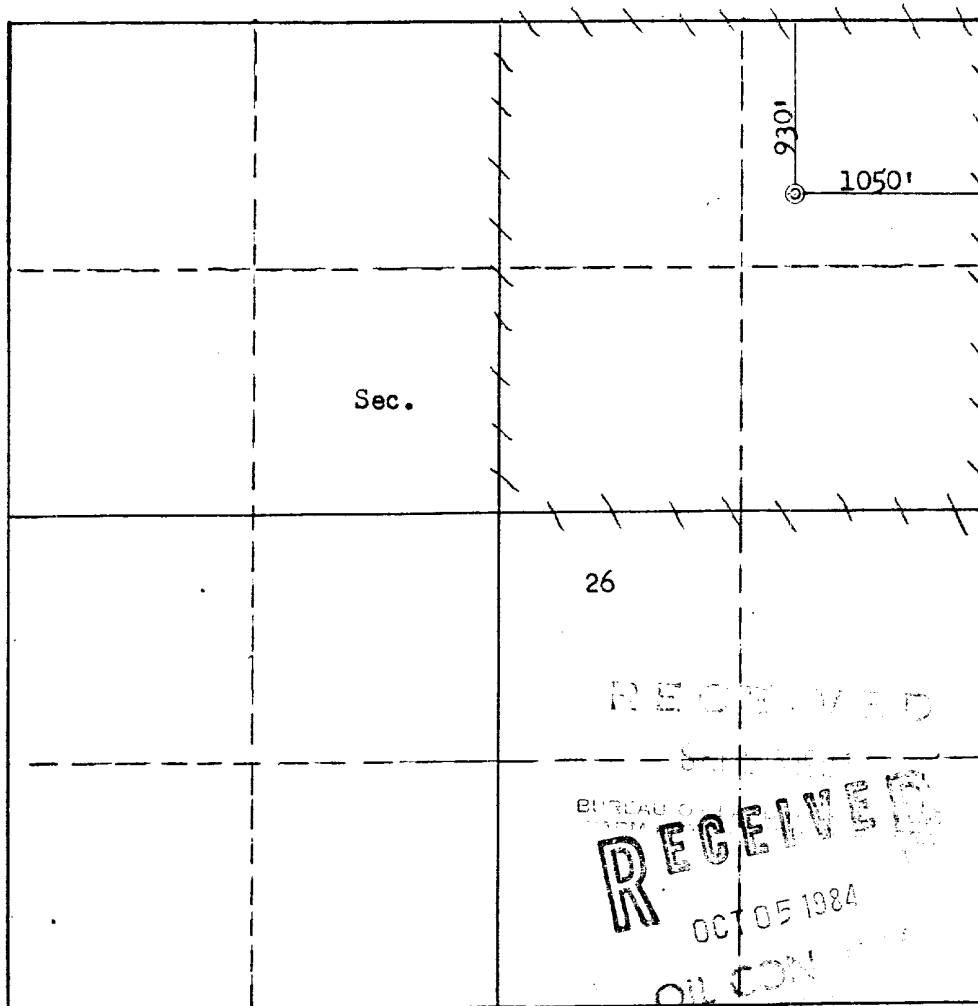
Operator ENERGY RESERVES GROUP			Lease GALLEGOS CANYON UNIT		Well No. 343
Unit Letter A	Section 26	Township 28N	Range 12W	County San Juan	
Actual Footage Location of Well: 930 feet from the North line and 1050 feet from the East line					
Ground Level Elev: 5906	Producing Formation Pictured Cliffs		Pool West Kutz Pictured Cliffs		Dedicated Acreage: 160 Acres

1. Outline the acreage dedicated to the subject well by colored pencil or hachure marks on the plat below.
2. If more than one lease is dedicated to the well, outline each and identify the ownership thereof (both as to working interest and royalty).
3. If more than one lease of different ownership is dedicated to the well, have the interests of all owners been consolidated by communitization, unitization, force-pooling, etc?

☒ Yes ☐ No If answer is "yes," type of consolidation Unitization

If answer is "no," list the owners and tract descriptions which have actually been consolidated. (Use reverse side of this form if necessary.) _____

No allowable will be assigned to the well until all interests have been consolidated (by communitization, unitization, forced-pooling, or otherwise) or until a non-standard unit, eliminating such interests, has been approved by the Commission.



Scale: 1"=1000'

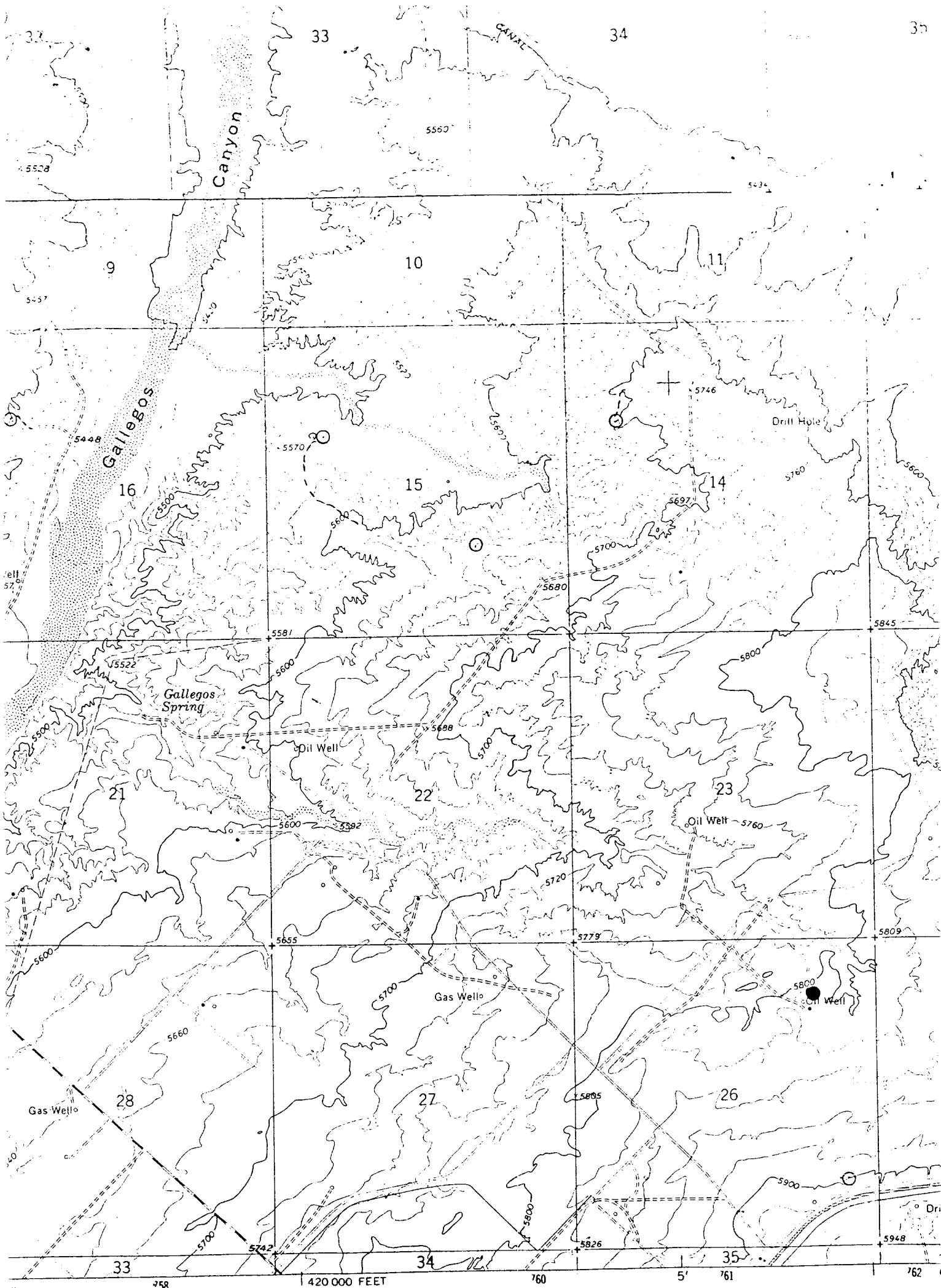
CERTIFICATION

I hereby certify that the information contained herein is true and complete to the best of my knowledge and belief.

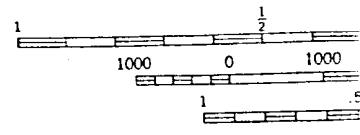
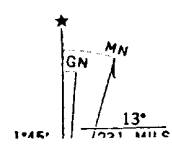
Name William J. Fiant
 Position Administrator, Field Services
 Company Energy Reserves Group, Inc.
 Date September 20, 1984

I hereby certify that the well location shown on this plat was plotted from field notes of actual surveys made by me or under my supervision, and that the same is true and correct to the best of my knowledge and belief.

Date Surveyed September 10, 1984
 Registered Professional Engineer and Land Surveyor
Fred B. Kerr Jr.
 Certificate No. 3950



oped, edited, and published by the Geological Survey
 ol by USGS and NOS/NOAA, and U. S. Bureau of Reclamation
 ography by photogrammetric methods from aerial
 ographs taken 1964 and by planetable surveys of the
 au of Reclamation 1965. Field checked by USGS 1965
 conic projection. 1927 North A
 00-foot grid based on New Mexi
 t zone
 0 meter Universal Transverse Me
 e 12, shown in blue
 red dashed lines indicate selecti
 lace on the predicted North American Datum 1983
 e the projection lines 2 meters north and
 meters east as shown by dashed corner ticks



Vicinity Map for
ENERGY RESERVES GROUP #343 GALLEGOS CANYON UNIT
930'FNL 1050'FEL Sec. 26-T28N-R12W
SAN JUAN COUNTY, NEW MEXICO

Revisions shown in purple compiled from aerial photographs
 taken 1978 and other source data. This information not
 field checked. Map edited 1979

THIS MAP COME
 FOR SALE BY U. S. GEOLOGICAL S
 A FOLDER DESCRIBING TO