

UNITED STATES
DEPARTMENT OF THE INTERIOR
GEOLOGICAL SURVEY

APPLICATION FOR PERMIT TO DRILL, DEEPEN, OR PLUG BACK

1a. TYPE OF WORK

DRILL ☒DEEPEN ☐PLUG BACK ☐

b. TYPE OF WELL

OIL
WELL ☐GAS
WELL ☒OTHER ☐SINGLE
ZONE ☒MULTIPLE
ZONE ☐

2. NAME OF OPERATOR

Energy Reserves Group, Inc.

3. ADDRESS OF OPERATOR

P. O. Box 3280; Casper, WY 82602

4. LOCATION OF WELL (Report location clearly and in accordance with any State requirements.)

At location

1,520' FSL, 1,630' FEL

At proposed prod. zone

NW/SE

14. DISTANCE IN MILES AND DIRECTION FROM NEAREST TOWN OR POST OFFICE*

Approx. 4½ miles east & 4½ miles south of Farmington, NM

15. DISTANCE FROM PROPOSED*

LOCATION TO NEAREST
PROPERTY OR LEASE LINE, FT.

(Also to nearest drilg. unit line, if any)

1,010'

18. DISTANCE FROM PROPOSED LOCATION*

TO NEAREST WELL, DRILLING, COMPLETED,
OR APPLIED FOR, ON THIS LEASE, FT.

100'

16. NO. OF ACRES IN LEASE

2,578.74
-27,794.68

19. PROPOSED DEPTH

1,325'

17. NO. OF ACRES ASSIGNED
TO THIS WELL

160

20. ROTARY OR CABLE TOOLS

Rotary

21. ELEVATIONS (Show whether DF, RT, GR, etc.)

5,660' GR ungraded

22. APPROX. DATE WORK WILL START*

Fall 1984 as approved

DRILLING OPERATIONS AUTHORIZED ARE

SUBJECT TO COMPLIANCE WITH ATTACHED

"GENERAL REQUIREMENTS"

PROPOSED CASING AND CEMENTING PROGRAM

This action is subject to administrative
appeal pursuant to 30 CFR 290.

SIZE OF HOLE	SIZE OF CASING	WEIGHT PER FOOT	SETTING DEPTH
12-1/4"	8-5/8"	20#	120'
6-1/4"	4-1/2"	10.5#	1,325'

Cement to surface

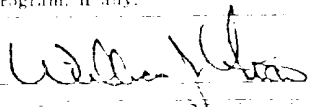
Cement to surface

It is proposed to drill the above well as described on the attached ten point drilling pland and thirteen point surface use plan.

IN ABOVE SPACE DESCRIBE PROPOSED PROGRAM: If proposal is to deepen or plug back, give data on present productive zone and proposed new productive zone. If proposal is to drill or deepen directionally, give pertinent data on subsurface locations and measured and true vertical depths. Give blowout preventer program, if any.

24

SIGNED



TITLE Administrator, Field

DATE 9/20/84

Service

(This space for Federal or State office use)

PERMIT NO.

APPROVAL DATE

AS AMENDED

APPROVED BY

TITLE

CONDITIONS OF APPROVAL, IF ANY:

OCT 25 1984

FALL 1984

ASST.

WMDCC

OIL CONSERVATION DIVISION

P. O. BOX 2048

Form C-107
Revised 10-1-7

STATE OF NEW MEXICO

ENERGY AND MINERALS DEPARTMENT

SANTA FE, NEW MEXICO 87501

All distances must be from the outer boundaries of the Section.

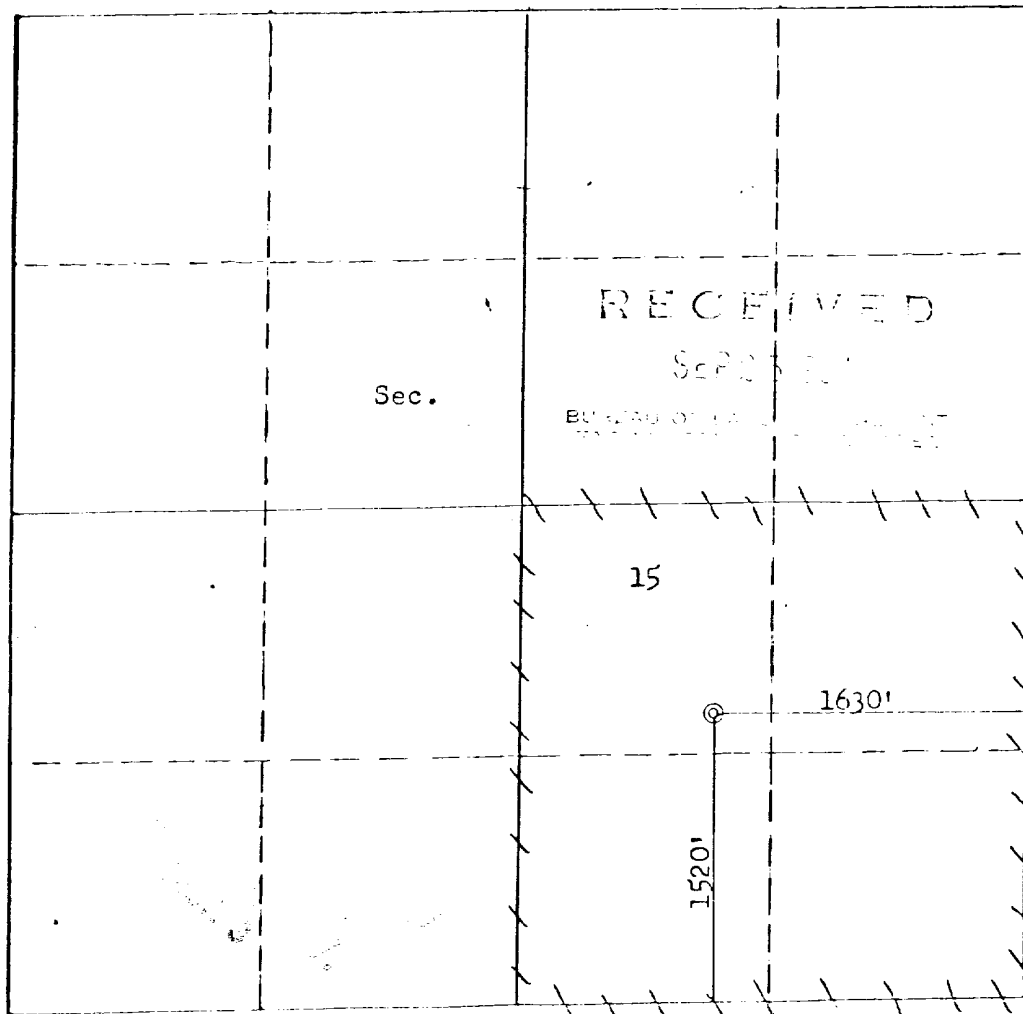
Operator ENERGY RESERVES GROUP			Location GALLAGOS CANYON UNIT		Well No. 347
Unit Letter J	Section 15	Township 28N	Range 12W	County San Juan	
Actual Footage Location of Well: 1520 feet from the South line and 1630 feet from the East line Ground Level Elev: 5560 Producing Formation Fruitland Pool North Pinion Fruitland Dedicated Acreage: 160 Acres					

1. Outline the acreage dedicated to the subject well by colored pencil or hatchure marks on the plat below.
2. If more than one lease is dedicated to the well, outline each and identify the ownership thereof (both as to working interest and royalty).
3. If more than one lease of different ownership is dedicated to the well, have the interests of all owners been consolidated by communitization, unitization, force-pooling, etc?

☒ Yes ☐ No If answer is "yes," type of consolidation Unitization

If answer is "no," list the owners and tract descriptions which have actually been consolidated. (Use reverse side of this form if necessary.)

No allowable will be assigned to the well until all interests have been consolidated (by communitization, unitization, forced-pooling, or otherwise) or until a non-standard unit, eliminating such interests, has been approved by the Commission.



Scale: 1"=1000'

CERTIFICATION

I hereby certify that the information contained herein is true and complete to the best of my knowledge and belief.

Name William J. Fiant
 Position Administrator, Field Services
 Company Energy Reserves Group, Inc.
 Date September 20, 1984

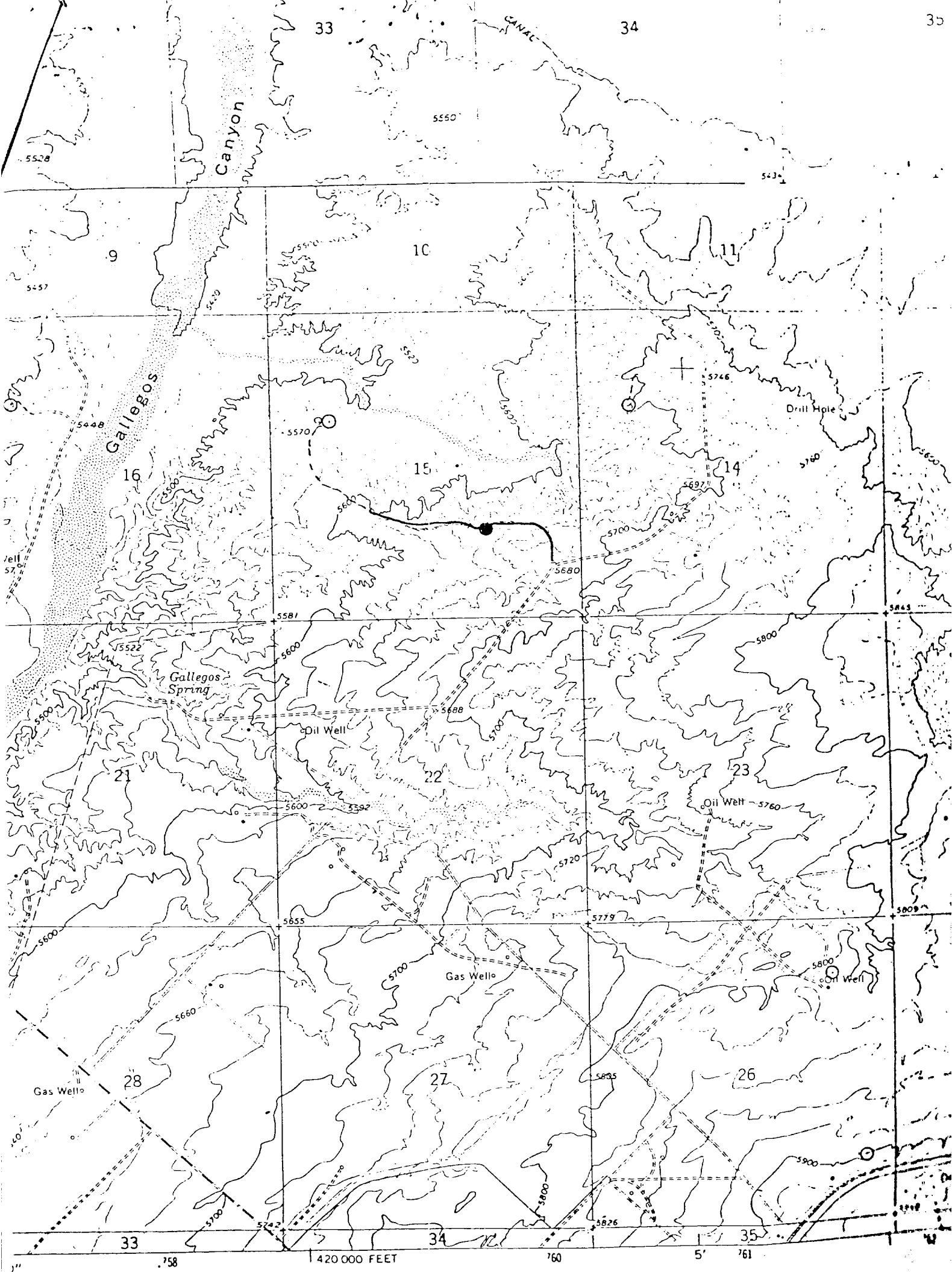
I hereby certify that the well location shown on this plat was plotted from field notes of actual surveys made by me or under my supervision, and that the same is true and correct to the best of my knowledge and belief.

Date Surveyed September 9, 1984

Registered Professional Engineer and Land Surveyor

Fred B. Kery Jr.

Certificate No. 3950



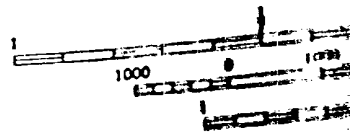
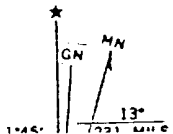
Compiled, edited, and published by the Geological Survey
 Control by USGS and NOS/NOAA, and U. S. Bureau of Reclamation
 Topography by photogrammetric methods from aerial
 photographs taken 1964 and by planetable surveys of the
 Bureau of Reclamation 1965. Field checked by USGS 1965

Conic projection. 1927 North A
 100-foot grid based on New Mexi
 time zone
 10 meter Universal Transverse Me
 zone 12, shown in blue
 red dashed lines indicate select

place on the predicted North American Datum 1983
 the projection lines 2 meters north and
 meters east as shown by dashed corner ticks

Vicinity Map for
 ENERGY RESERVES GROUP #347 GALLEGOS CANYON UNIT
 1520'FSL 1630'FEL Sec. 15-T28N-R12W
 SAN JUAN COUNTY, NEW MEXICO

Revisions shown in purple compiled from aerial photographs
 taken 1978 and other source data. This information not
 field checked. Map edited 1979



DOTTED
 NATIONAL

THIS MAP CAN
 FOR SALE BY U.S. GEOLOGICAL
 A FOLDER DESCRIBING