

UNITED STATES  
DEPARTMENT OF THE INTERIOR  
GEOLOGICAL SURVEY

## APPLICATION FOR PERMIT TO DRILL, DEEPEN, OR PLUG BACK

## 1a. TYPE OF WORK

DRILL ☒DEEPEN ☐PLUG BACK ☐

## b. TYPE OF WELL

OIL  
WELL ☐GAS  
WELL ☒

OTHER

SINGLE  
ZONE ☒MULTIPLE  
ZONE ☐

## 2. NAME OF OPERATOR

Energy Reserves Group, Inc.

## 3. ADDRESS OF OPERATOR

P. O. Box 3280; Casper, WY 82602

## 4. LOCATION OF WELL (Report location clearly and in accordance with any State requirements.)

At surface

1,850' ENL, 1,020' FWL

At proposed prod. zone

SW/NW

## 14. DISTANCE IN MILES AND DIRECTION FROM NEAREST TOWN OR POST OFFICE\*

Approx. 4 miles east &amp; 3.75 miles south of Farmington, NM

## 15. DISTANCE FROM PROPOSED\*

LOCATION TO NEAREST  
PROPERTY OR LEASE LINE, FT.  
(Also to nearest drlg. unit line, if any)

790'

## 18. DISTANCE FROM PROPOSED LOCATION\*

TO NEAREST WELL, DRILLING, COMPLETED,  
OR APPLIED FOR, ON THIS LEASE, FT.

100'

## 16. NO. OF ACRES IN LEASE

25.5679  
-27,794.68-

## 19. PROPOSED DEPTH

1,150'

17. NO. OF ACRES ASSIGNED  
TO THIS WELL

160

## 20. ROTARY OR CABLE TOOLS

Rotary

## 21. ELEVATIONS (Show whether DE, RT, GR, etc.)

5,532' GR ungraded

## 22. APPROX. DATE WORK WILL START\*

Fall 1984 as approved

23. DRILLING OPERATIONS AUTHORIZED ARE  
SUBJECT TO COMPLIANCE WITH ATTACHED  
"GENERAL REQUIREMENTS" AND CEMENTING PROGRAMThis action is subject to administrative  
appeal pursuant to 30 CFR 290.

SIZE OF HOLE	SIZE OF CASING	WEIGHT PER FOOT	SETTING DEPTH
12-1/4"	8-5/8"	20#	160'
6-1/4"	4-1/2"	10.5#	1,150'

Cement to surface

Cement to surface

It is proposed to drill the above well as described on the attached ten point  
drilling plan and thirteen point surface use plan.

IN ABOVE SPACE DESCRIBE PROPOSED PROGRAM: If proposal is to deepen or plug back, give data on present productive zone and proposed new productive zone. If proposal is to drill or deepen directionally, give pertinent data on subsurface locations and measured and true vertical depths. Give blowout preventer program, if any.

24.

SIGNED

TITLE Administrator, Field  
Services

DATE 9/20/84

(This space for Federal or State office use)

PERMIT NO.

APPROVAL DATE

APPROVED BY

TITLE

CONDITIONS OF APPROVAL, IF ANY:

AS AMENDED

OCT 23 1984

/s/ J. Stan McKee

## OIL CONSERVATION DIVISION

STATE OF NEW MEXICO

P. O. BOX 2043

Form C-107  
Revised 10-1-

OIL AND MINERALS DEPARTMENT

SANTA FE, NEW MEXICO 87501

All distances must be from the outer boundaries of the Section.

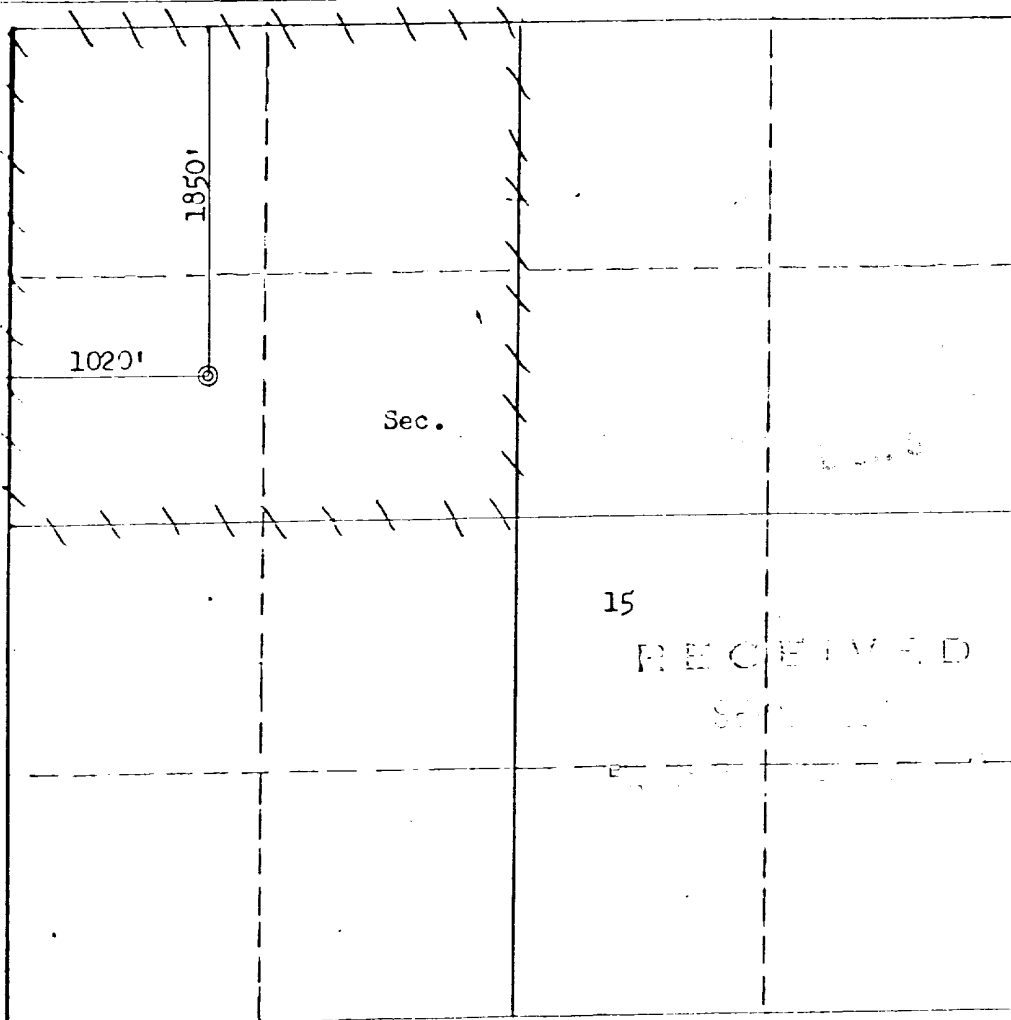
Operator ENERGY RESERVES GROUP			Lease GALLEROS CANYON UNIT		Well No. 345
Unit Letter E	Section 15	Township 28N	Range 12W	County San Juan	
Actual Footage Location of Well:					
1850 feet from the North line and		1020 feet from the West line			
Ground Level Elev. 5532	Producing Formation Fruitland	Pool North Pinion Fruitland		Dedicated Acreage 160 Acres	

1. Outline the acreage dedicated to the subject well by colored pencil or hatchure marks on the plat below.
2. If more than one lease is dedicated to the well, outline each and identify the ownership thereof (both as to working interest and royalty).
3. If more than one lease of different ownership is dedicated to the well, have the interests of all owners been consolidated by communitization, unitization, force-pooling, etc?

☒ Yes ☐ No If answer is "yes," type of consolidation Unitization

If answer is "no," list the owners and tract descriptions which have actually been consolidated. (Use reverse side of this form if necessary.)

No allowable will be assigned to the well until all interests have been consolidated (by communitization, unitization, forced-pooling, or otherwise) or until a non-standard unit, eliminating such interests, has been approved by the Commission.



## CERTIFICATION

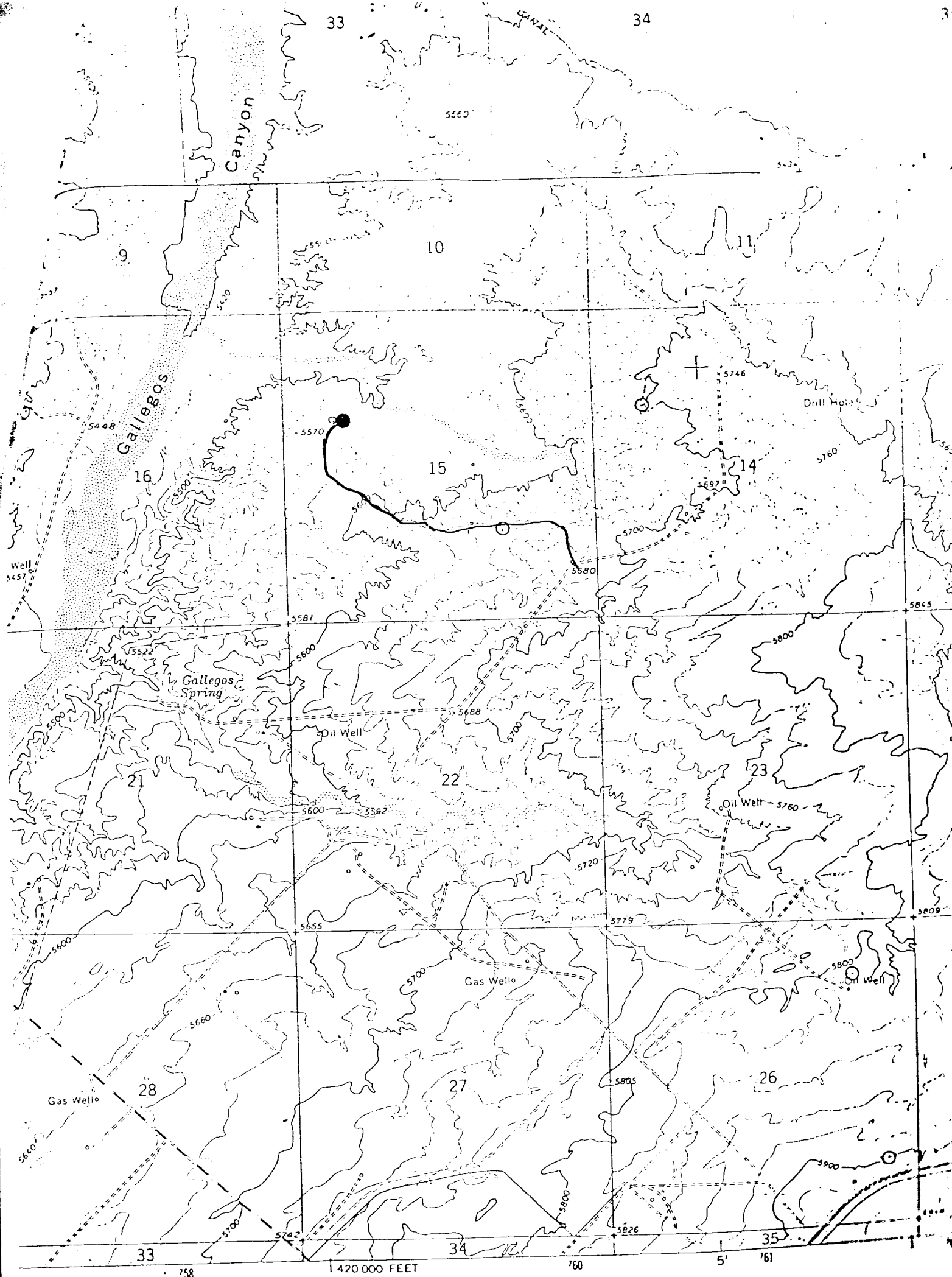
I hereby certify that the information contained herein is true and complete to the best of my knowledge and belief.

Name William J. Fiant  
 Position  
 Administrator, Field Services  
 Company  
 Energy Reserves Group, Inc.  
 Date  
 September 20, 1984

I hereby certify that the well location shown on this plat was plotted from field notes of actual surveys made by me or under my supervision, and that the same is true and correct to the best of my knowledge and belief.

Date Surveyed  
 September 9, 1984  
 Registered Professional Engineer  
 and Land Surveyor  
Fred B. Kerr Jr.  
 Certification No. 42111  
 3950

Scale: 1"=1000'



Compiled, edited, and published by the Geological Survey  
 Control by USGS and NOS/NOAA, and U. S. Bureau of Reclamation  
 Topography by photogrammetric methods from aerial  
 photographs taken 1964 and by planimeter surveys of the  
 Bureau of Reclamation 1965. Field checked by USGS 1965

Alconic projection. 1927 North A  
 1000-foot grid based on New Mexi  
 st zone  
 100 meter Universal Transverse Me  
 ne 12, shown in blue

Red dashed lines indicate select

place on the predicted North American Datum 1983  
 over the projection lines 2 meters north and  
 2 meters east as shown by dashed corner ticks

Vicinity Map for  
 ENERGY RESERVES GROUP #346 GALLEGOS CANYON UNIT  
 1850'FNL 1020'FWL Sec. 15-T28N-R12W  
 SAN JUAN COUNTY, NEW MEXICO

Revisions shown in purple compiled from aerial photographs  
 taken 1978 and other source data. This information not  
 field checked. Map edited 1979

FOR SALE BY U.S. GOVERNMENT  
 A PUBLIC LAW