

OIL CONSERVATION DIVISION

P. O. BOX 2088

Form C-107  
Revised 10-1

STATE OF NEW MEXICO  
OIL AND MINERALS DEPARTMENT

SANTA FE, NEW MEXICO 87501

All distances must be from the outer boundaries of the Section.

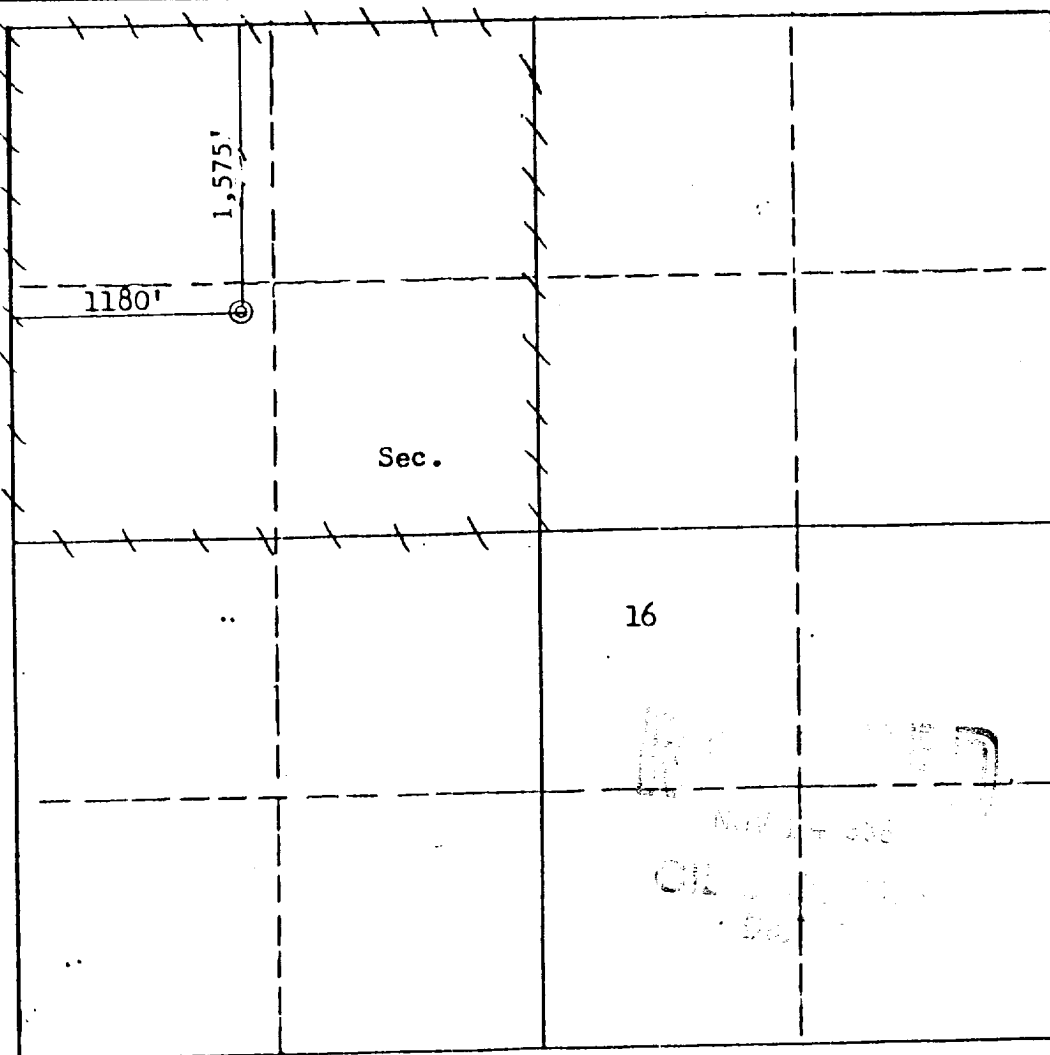
Operator <b>ENERGY RESERVES GROUP</b>		Lease <b>GALLEGOS CANYON UNIT</b>			Well No. <b>341</b>
Unit Letter <b>E</b>	Section <b>16</b>	Township <b>28N</b>	Range <b>12W</b>	County <b>San Juan</b>	
Actual Footage Location of Well: <b>1,575'</b> feet from the <b>North</b> line and <b>1180</b> feet from the <b>West</b> line					
Ground Level Elev. <b>5479</b>	Producing Formation <b>FRUITLAND</b>		Pool <b>North Pinion Fruitland</b>		Dedicated Acreage <b>160</b> Acres

1. Outline the acreage dedicated to the subject well by colored pencil or hachure marks on the plat below.
2. If more than one lease is dedicated to the well, outline each and identify the ownership thereof (both as to working interest and royalty).
3. If more than one lease of different ownership is dedicated to the well, have the interests of all owners been consolidated by communitization, unitization, force-pooling, etc?

Yes     No    If answer is "yes," type of consolidation Unitization

If answer is "no," list the owners and tract descriptions which have actually been consolidated. (Use reverse side of this form if necessary.) \_\_\_\_\_

No allowable will be assigned to the well until all interests have been consolidated (by communitization, unitization, forced-pooling, or otherwise) or until a non-standard unit, eliminating such interests, has been approved by the Commission.



Scale: 1"=1000'

CERTIFICATION

I hereby certify that the information contained herein is true and complete to the best of my knowledge and belief.

Name William J. Fland  
 William J. Fland  
 Position  
 Administrator, Field Services  
 Company  
 Energy Reserves Group, Inc.  
 Date  
 September 20, 1984

I hereby certify that the well location shown on this plat was plotted from field notes of actual surveys made by me or under my supervision, and that the same is true and correct to the best of my knowledge and belief.

Date Surveyed  
 September 14, 1984  
 Registered Professional Engineer and Land Surveyor  
 Fred E. Kert Jr.  
 Certificate No. 3950