

May 8, 1985

Mr. Gilbert Quintana
New Mexico Oil Conservation Division
P. O. Box 2088
Santa Fe, NM 87501

File: DDL-507-400.1

Application for Directional Drilling
Gallegos Canyon Unit No. 222E
SE/SE Section 12, T28N, R13W
San Juan County, New Mexico

Amoco Production Company hereby requests approval to directionally drill the Gallegos Canyon Unit No. 222E. The proposed surface location is 790' FSL x 630' FEL, Section 12, T28N, R13W. The proposed bottom hole location is 1190' FSL x 1650' FEL Section 12, T28N, R13W.

The reason the subject well is being deviated is to avoid the surface owner's cultivated fields.

Sincerely,

Original Signed
W. J. Holcomb
by BDC

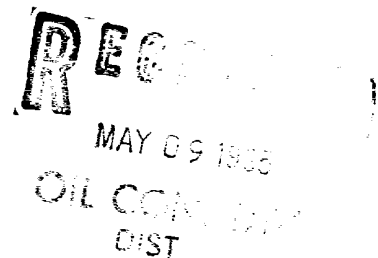
LJM/ct

Attachments

✓cc: Mr. Ernie Busch
New Mexico Oil Conservation Division
1000 Rio Brazos Road
Aztec, NM 87410

cc: R. J. Criswell
Rm. AB 1152

AM17



PROPOSED BOTTOM HOLE LOCATION.

NEW MEXICO OIL CONSERVATION COMMISSION WELL LOCATION AND ACREAGE DEDICATION PLAT

Form C-102
Supersedes C-120
Effective 1-1-65

All distances must be from the outer boundaries of the Section.

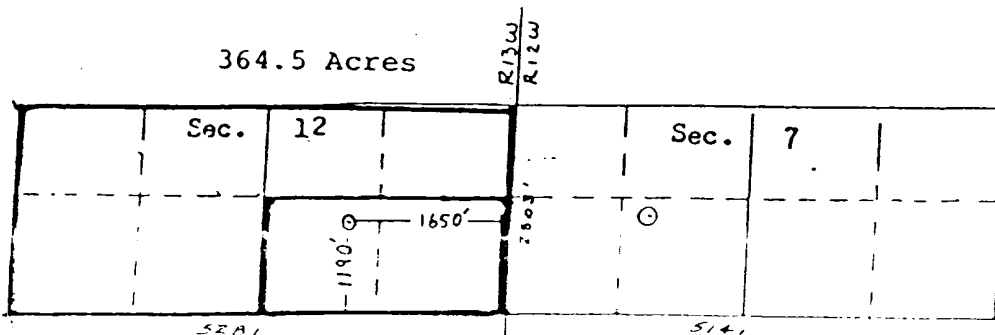
Operator AMOCO PRODUCTION COMPANY			Lease GALLEGOS CANYON UNIT			Well No. 222E		
Unit Letter 0	Section 12	Township 28N	Range 13W	County San Juan				
Actual Footage Location of Well: 1190 feet from the South line and 1650 feet from the East line								
Ground Level Elev: 5678	Producing Formation Dakota & Gallup			Pool Basin Dakota/Totah Gallup			Dedicated Acreage: 364.5/80 Acres	

1. Outline the acreage dedicated to the subject well by colored pencil or hachure marks on the plat below.
2. If more than one lease is dedicated to the well, outline each and identify the ownership thereof (both as to working interest and royalty).
3. If more than one lease of different ownership is dedicated to the well, have the interests of all owners been consolidated by communitization, unitization, force-pooling, etc?

☒ Yes ☐ No If answer is "yes," type of consolidation Unitized

If answer is "no," list the owners and tract descriptions which have actually been consolidated. (Use reverse side of this form if necessary.)

No allowable will be assigned to the well until all interests have been consolidated (by communitization, unitization, forced-pooling, or otherwise) or until a non-standard unit, eliminating such interests, has been approved by the Commission.



Scale: 1"=2000'

Proposed Bottom Hole Location.

RECEIVED

MAY 03 1985

CERTIFICATION

I hereby certify that the information contained herein is true and complete to the best of my knowledge and belief.

Original Signed by

Name **D.D. Lawson**
D. D. Lawson

Position **Asst. Adm. Supervisor**

Company **Amoco Production Co.**

Date **1-31-85**

I hereby certify that the well location shown on this plat was plotted from field notes of actual surveys made by me or under my supervision, and that the same is true and correct to the best of my knowledge and belief.

Date Surveyed

February 18, 1985
Registered Professional Engineer and Land Surveyor
Fred B. Kern, Jr.
Certificate No. **116**

NEW MEXICO

CONTOUR INTERVAL 20 FEET
DOTTED LINES REPRESENT 10-FOOT CONTOURS
NATIONAL GEODETIC VERTICAL DATUM OF 1929

KILOMETERS

Heavy
Medium

AMOCO PRODUCTION CO. #222E CALLEGOS CANYON UNIT
790' FSL 630' FSL Sec. 12-T28N-R13W
SAN JUAN COUNTY, NEW MEXICO

Locality Map for

