

UNITED STATES
DEPARTMENT OF THE INTERIOR
GEOLOGICAL SURVEY

APPLICATION FOR PERMIT TO DRILL, DEEPEN, OR PLUG BACK

1A. TYPE OF WORK

DRILL ☒DEEPEN ☐PLUG BACK ☐

B. TYPE OF WELL

OIL
WELL ☐GAS
WELL ☒OTHER ☐SINGLE
ZONE ☒MULTIPLE
ZONE ☐

2. NAME OF OPERATOR

Amoco Production Company

3. ADDRESS OF OPERATOR

501 Airport Drive Farmington, NM 87401

4. LOCATION OF WELL (Report location clearly and in accordance with any State requirements.)*

At surface

1110' FSL x 940' FWL

At proposed prod. zone

14. DISTANCE IN MILES AND DIRECTION FROM NEAREST TOWN OR POST OFFICE*

Approximately 11 miles south of Farmington

15. DISTANCE FROM PROPOSED*

LOCATION TO NEAREST
PROPERTY OR LEASE LINE, FT.

(Also to nearest drig. unit line, if any)

940'

18. DISTANCE FROM PROPOSED LOCATION*
TO NEAREST WELL, DRILLING, COMPLETED,
OR APPLIED FOR, ON THIS LEASE, FT.

2500' N

16. NO. OF ACRES IN LEASE

1280

19. PROPOSED DEPTH

6200

17. NO. OF ACRES ASSIGNED
TO THIS WELL

320

20. ROTARY OR CABLE TOOLS

Rotary

21. ELEVATIONS (Show whether DF, RT, GR, etc.)

5843' GL

This action is subject to administrative
appeal pursuant to 30 CFR 290.

22. APPROX. DATE WORK WILL START*

as soon as permitted

DRILLING OPERATIONS AUTHORIZED ARE
SUBJECT TO COMPLIANCE WITH ATTACHED
"GENERAL REQUIREMENTS"

PROPOSED CASING AND CEMENTING PROGRAM

SIZE OF HOLE	SIZE OF CASING	WEIGHT PER FOOT	SETTING DEPTH	QUANTITY OF CEMENT
12 1/4"	8 5/8" (NEW)	24 # K-55	300'	355 cu.ft. Class 'B' w/2% CaCl ₂ -ci
7 7/8"	4 1/2" (NEW)	10.5# K-55	6200'	Stage 1-540 cr.ft. Class 'B' w/50:1 POZ, 6% gel, 2# med tuf plug/sx, and 0.8% FLA/ Tail in w/118 cu.ft. Class 'B' Neat-circ.

Amoco proposes to drill the above well to further develop the Basin Dakota reservoir. The well will be drilled to the surface casing point using native mud. The well will then be drilled to TD with a low solids nondispersed mud system. Completion design will be based on open hole logs. Copies of all logs will be filed upon completion. Amoco's standard blowout prevention will be employed; see attached drawing for blowout preventer design.

Stage 2-1380 cu.ft. Class 'B' w/
65:35 POZ, 6% gel, 2# med tuf plug
sx, and 0.8% FLA/ Tail in w/118
cu.ft. Class 'B' Neat-circ.
DV Tool set at 4330'.

Upon completion the well location will be cleaned and the reserve pit filled and leveled.

Gas produced from this well is dedicated to El Paso Natural Gas under contract No. 56,742.

IN ABOVE SPACE DESCRIBE PROPOSED PROGRAM: If proposal is to deepen or plug back, give data on present productive zone and proposed new productive zone. If proposal is to drill or deepen directionally, give pertinent data on subsurface locations and measured and true vertical depths. Give blowout preventer program, if any.

24.

Original Signed By

SIGNED

E. D. Shaw

TITLE

District Adm. Supervisor

(This space for Federal or State office use)

PERMIT NO.

APPROVAL DATE

APPROVED BY

CONDITIONS OF APPROVAL, IF ANY:

JAN 17 1985

OIL CON. DIV.
DIST. 3

TITLE

NMOCC

5. LEASE DESIGNATION AND SERIAL NO.

SF077967

6. IF INDIAN, ALLOTTEE OR TRIBE NAME

7. UNIT AGREEMENT NAME

Gallegos Canyon Unit

8. FARM OR LEASE NAME

9. WELL NO.

137E

10. FIELD AND POOL, OR WILDCAT

Basin Dakota

11. SEC. T. R. M. OR BLK.

AND SURVEY OR AREA

SW/SW, Section 36, T28N,

R13W

12. COUNTY OR PARISH

San Juan

13. STATE

NM

All distances must be from the outer boundaries of the Section.

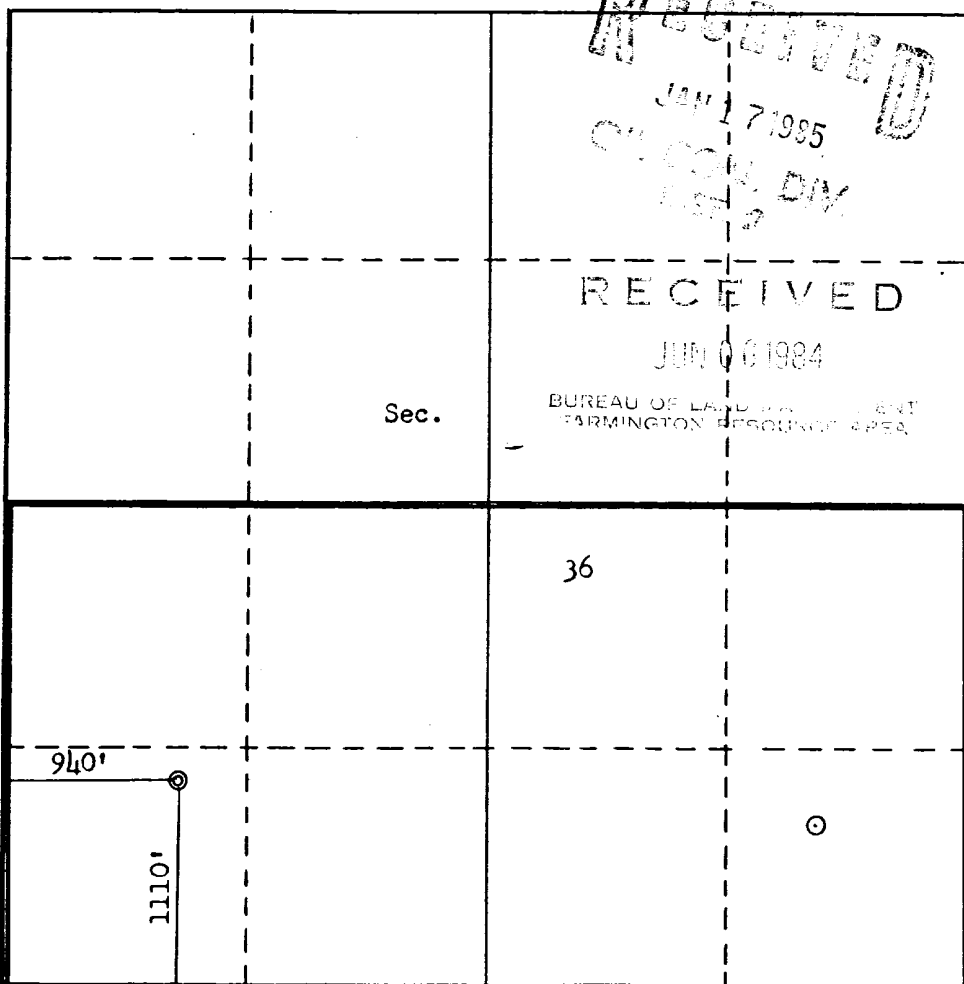
Operator AMOCO PRODUCTION COMPANY			Lease GALLEGOS CANYON UNIT		Well No. 137E
Unit Letter M	Section 36	Township 28N	Range 13W	County San Juan	
Actual Footage Location of Well: 1110 feet from the South line and 940 feet from the West line					
Ground Level Elev. 5843	Producing Formation Dakota		Pool Basin Dakota		Dedicated Acreage: 320 Acres

1. Outline the acreage dedicated to the subject well by colored pencil or hachure marks on the plat below.
2. If more than one lease is dedicated to the well, outline each and identify the ownership thereof (both as to working interest and royalty).
3. If more than one lease of different ownership is dedicated to the well, have the interests of all owners been consolidated by communitization, unitization, force-pooling, etc?

☒ Yes ☐ No If answer is "yes," type of consolidation Unitized

If answer is "no," list the owners and tract descriptions which have actually been consolidated. (Use reverse side of this form if necessary.)

No allowable will be assigned to the well until all interests have been consolidated (by communitization, unitization, forced-pooling, or otherwise) or until a non-standard unit, eliminating such interests, has been approved by the Commission.



CERTIFICATION

I hereby certify that the information contained herein is true and complete to the best of my knowledge and belief.

Original signed By
B. D. Shaw

Name
B. D. Shaw

Position
Administrative Supervisor

Company
Amoco Production Company

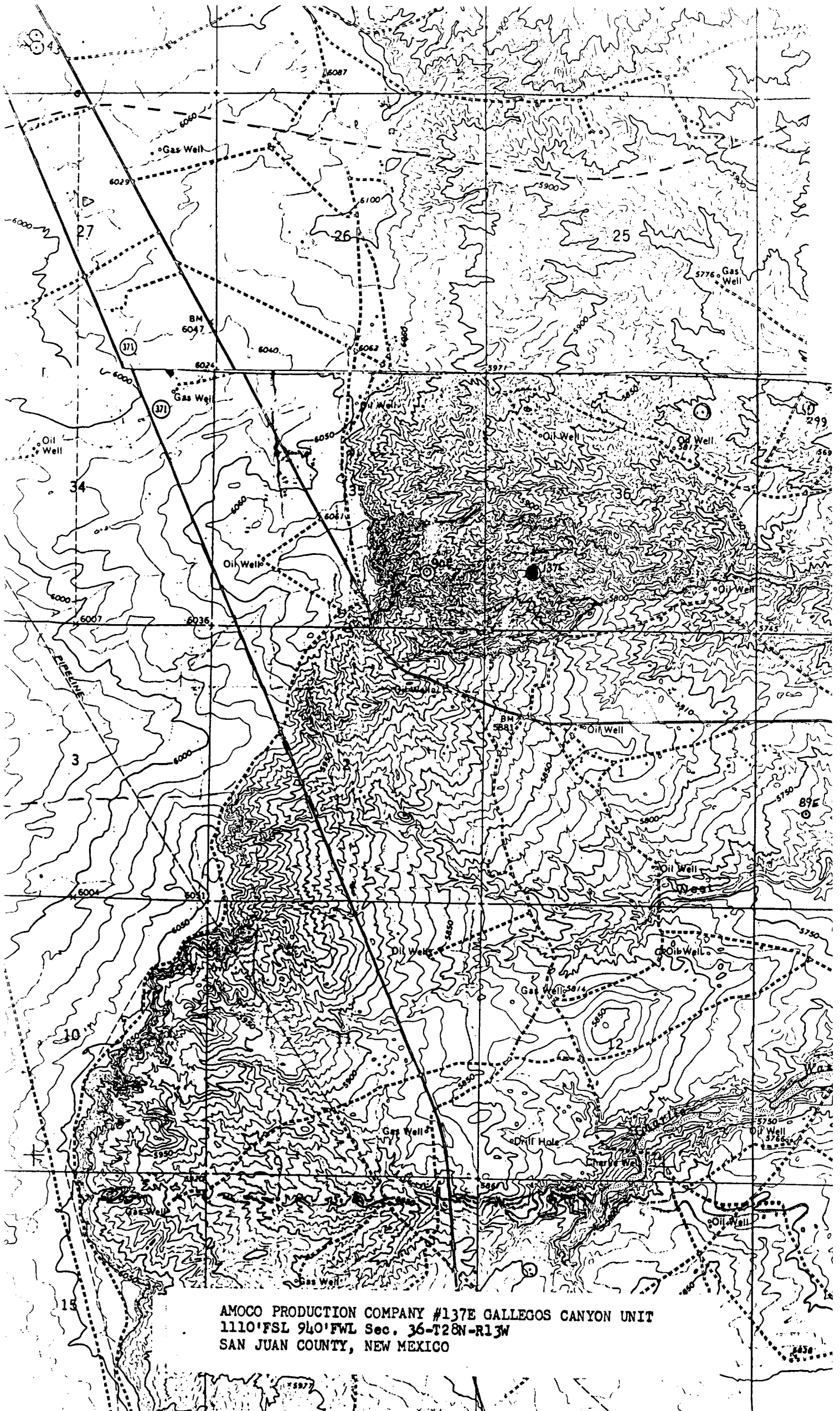
Date
May 31, 1984

I hereby certify that the well location shown on this plat was plotted from field notes of actual surveys made by me or under my supervision, and that the same is true and correct to the best of my knowledge and belief.

Date Surveyed
December 10, 1983

Registered Professional Engineer and/or Land Surveyor
Fred B. Kerr Jr.

Certificate No.
3950



AMOCO PRODUCTION COMPANY #137E GALLEGOS CANYON UNIT
1110' FSL 940' FWL Sec. 36-T28N-R13W
SAN JUAN COUNTY, NEW MEXICO