

UNITED STATES
DEPARTMENT OF THE INTERIOR
BUREAU OF LAND MANAGEMENT

30-045-29161 ✓

APPLICATION FOR PERMIT TO DRILL, DEEPEN, OR PLUG BACK

1a. TYPE of WORK
 b. TYPE of WELL
 DRILL DEEPEN PLUG BACK
 OIL WELL GAS WELL OTHER
 SINGLE ZONE MULTIPLE ZONE

2. NAME of OPERATOR
 RODDY PRODUCTION COMPANY, INC. ✓ 36845

3. ADDRESS of OPERATOR
 P.O. Box 2221 Farmington, NM 87499

4. LOCATION of WELL
 1820' FSL & 1470' FWL

14. DISTANCE IN MILES and DIRECTION from NEAREST TOWN
 10.7 miles southeast of Farmington, NM

5. LEASE DESIGNATION
 NM010063

6. INDIAN, ALLOTTEE, TRIBE NAME

7. UNIT AGREEMENT NAME

8. FARM OR LEASE NAME
 LUCERNE FEDERAL ✓ 13929

9. WELL NO. 3

10. FIELD and POOL or WILDCAT
 Pictured Cliffs ✓ 196.80 EXT.

11. SEC., T., R., M., or BLK
 Sec. 17, T28N, R11W, NMPM ✓

12. COUNTY or PARISH
 San Juan ✓

13. STATE
 NM

15. DISTANCE from PROPOSED LOCATION to NEAREST PROPERTY or LEASE LINE, Ft.
 1470'

16. NO. of ACRES in LEASE
 1518 (e)

17. NO. of ACRES ASSIGNED to WELL
 160 ✓

18. DISTANCE from PROPOSED LOCATION to NEAREST WELL, DRILLING, COMPLETED, or APPLIED FOR, ON THIS LEASE, Ft.
 +/- 500'

19. PROPOSED DEPTH
 1775'

20. ROTARY or CABLE TOOLS
 Rotary

21. ELEVATIONS (Show DF, RT, GR, etc.)
 5671' GR ✓
This action is subject to technical and procedural review pursuant to 43 CFR 3106.3 and appeal pursuant to 43 CFR 3106.4.

22. APPROX. DATE WORK WILL START
 October 1994

23. PROPOSED CASING and CEMENTING PROGRAM

SIZE of HOLE	SIZE of CASING	WEIGHT per FOOT	SETTING DEPTH	QUANTITY of CEMENT GENERAL REQUIREMENTS
8 3/4"	7"	20# J or K-55	200'	55 sx (65 cu ft) circ to surface
6 1/4"	4 1/2"	10.5# J or K-55	1775'	195 sx (242 cu ft) circ to surface

DRILLING OPERATIONS AUTHORIZED ARE SUBJECT TO COMPLIANCE WITH ATTACHED GENERAL REQUIREMENTS.

Roddy Production proposes to spud in the Nacimiento Formation. Will drill an 8-3/4" hole to a TD of 200'. Run and cement surface casing with cement returns to surface. WOC 12 hours. Test casing to 600 psi for 30 minutes. Drill a 6-1/4" hole to TD of 1775' using fresh water mud. Run logs at TD. Run and cement production casing with cement returns to surface. WOC 12 hrs. Move out drilling rig and move in completion unit. Pressure test to 2000 psi for 30 minutes prior to perforating. Run cased hole correlation logs. Perforate Pictured Cliffs and stimulate using a fresh water based gel or foam system.

No poisonous gases are anticipated.

Adequate weight material will be on location to control flows from the Farmington sands.

Surface ownership is BLM.

RECEIVED
 AUG 29 1994

RECEIVED
 BLM
 94 AUG - 9 PM 2:58
 070 FARMINGTON, NM

24. SIGNED: John L. Steubke TITLE: Agent OIL CON. DIV. DATE: 7/28/94
DIST. 3

(This space for Federal or State office use)

PERMIT NO. _____ APPROVAL DATE _____

APPROVED BY: OK TITLE _____ DATE: AUG 26 1994
Original Signed: STEPHEN MASON

NMOCD DISTRICT MANAGER

District I
 PC Box 1980, Hobbs, NM 88241-1980
 District II
 PO Drawer DD, Artesia, NM 88211-0719
 District III
 1000 Rio Brazos Rd., Aztec, NM 87410
 District IV
 PO Box 2088, Santa Fe, NM 87504-2088

State of New Mexico
 Energy, Minerals & Natural Resources Department

Form C-102
 Revised February 21, 1994
 Instructions on back
 Submit to Appropriate District Office
 State Lease - 4 Copies
 Fee Lease - 3 Copies

OIL CONSERVATION DIVISION
 PO Box 2088
 Santa Fe, NM 87504-2088

RECEIVED
 BLF
 94 AUG -9 PM 2:58

AMENDED REPORT

WELL LOCATION AND ACREAGE DEDICATION PLAT
 070 FARMINGTON, NM

1 API Number 30-045-29161		2 Pool Code 79680		3 Pool Name WEST KUTZ PICTURED CLIFF EXT	
4 Property Code 13929		5 Property Name Lucerne Federal			6 Well Number 3
7 OGRID No. 36845		8 Operator Name RODDY PRODUCTION INC.			9 Elevation 5671'

10 Surface Location

10/1 UL or lot no.	10/2 Section	10/3 Township	10/4 Range	10/5 Lot Idn	10/6 Feet from the	10/7 North/South line	10/8 Feet from the	10/9 East/West line	10/10 County
K	17	28 N	11 W		1820	South	1470	West	S.J.

11 Bottom Hole Location If Different From Surface

11/1 UL or lot no.	11/2 Section	11/3 Township	11/4 Range	11/5 Lot Idn	11/6 Feet from the	11/7 North/South line	11/8 Feet from the	11/9 East/West line	11/10 County

12 Dedicated Acres 160	13 Joint or Infill N	14 Consolidation Code	15 Order No.
---------------------------	-------------------------	-----------------------	--------------

NO ALLOWABLE WILL BE ASSIGNED TO THIS COMPLETION UNTIL ALL INTERESTS HAVE BEEN CONSOLIDATED OR A NON-STANDARD UNIT HAS BEEN APPROVED BY THE DIVISION

17 OPERATOR CERTIFICATION

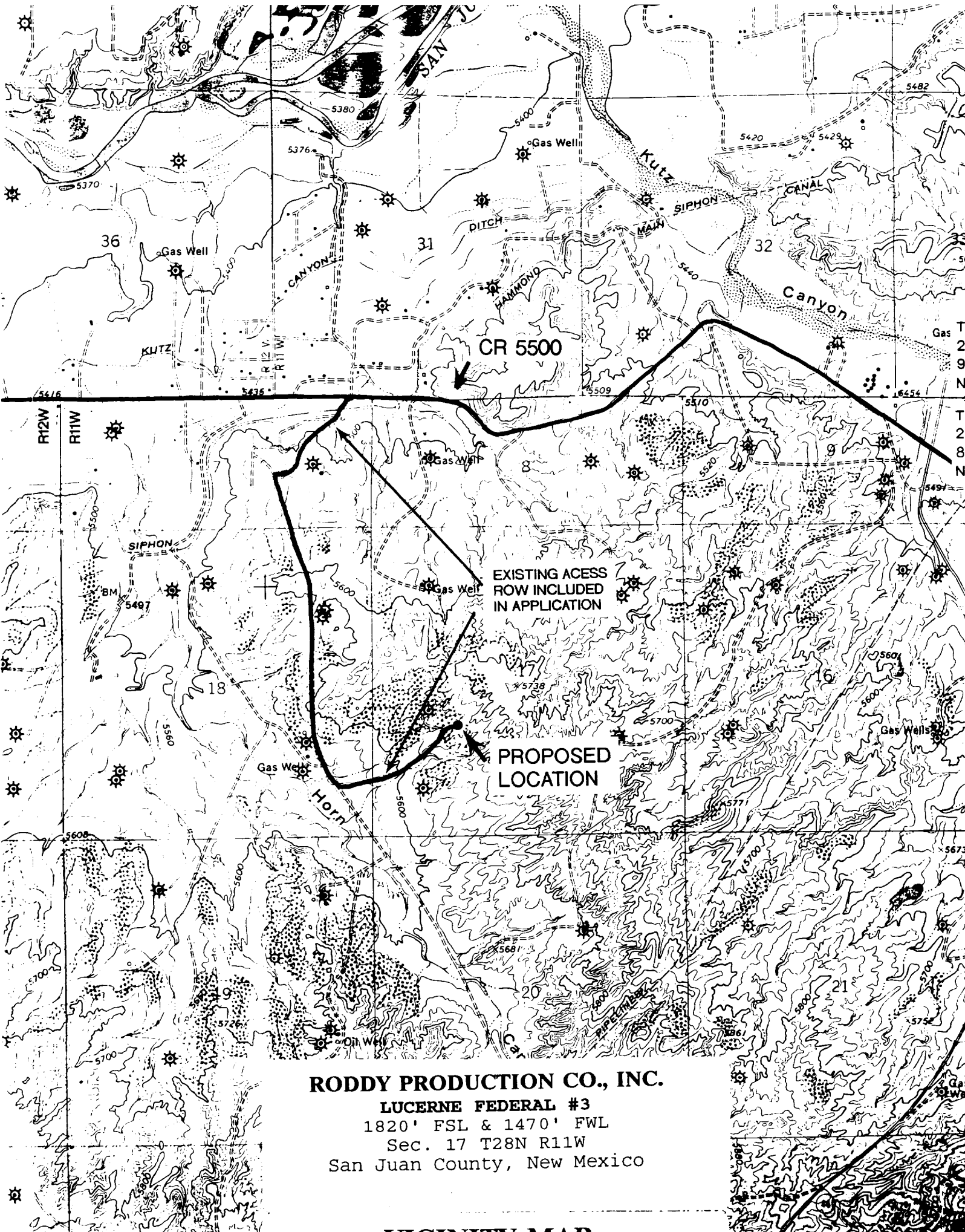
I hereby certify that the information contained herein is true and complete to the best of my knowledge and belief

John D. Steuble
 Signature
 John D. Steuble
 Printed Name
 Agent
 Title
 07/28/94
 Date

18 SURVEYOR CERTIFICATION

I hereby certify that the well location shown on this plat was plotted from field notes of actual surveys made by me or under my supervision, and that the same is true and correct to the best of my knowledge and belief

7-5-94
 Date of Survey
 Signature and Seal of Registered Professional Surveyor:
 6857
 Certificate Number



RODDY PRODUCTION CO., INC.
LUCERNE FEDERAL #3
1820' FSL & 1470' FWL
Sec. 17 T28N R11W
San Juan County, New Mexico