



District I  
PO Box 1980, Hobbs, NM 88241-1980  
District II  
PO Drawer DD, Artesia, NM 88211-0719  
District III  
1000 Rio Brazos Rd., Aztec, NM 87410  
District IV  
PO Box 2088, Santa Fe, NM 87504-2088

State of New Mexico  
Energy, Minerals & Natural Resources Department

OIL CONSERVATION DIVISION  
PO Box 2088  
Santa Fe, NM 87504-2088

Form C-102  
Revised February 21, 1994

Instructions on back  
Submit to Appropriate District Office  
State Lease - 4 Copies  
Fee Lease - 3 Copies

☐ AMENDED REPORT

WELL LOCATION AND ACREAGE DEDICATION PLAT

API Number 30-045-29446	Pool Code 77200	Pool Name Fulcher Kutz Pictured Cliffs
Property Code 6788	Property Name Angel Peak B	Well Number 14R
OGRID No. 14538	Operator Name BURLINGTON RESOURCES OIL & GAS COMPANY	Elevation 5818'

<sup>10</sup> Surface Location

UL or lot no.	Section	Township	Range	Lot Ida	Feet from the	North/South line	Feet from the	East/West line	County
G	13	28-N	11-W		1850	North	1830	East	S.J.

<sup>11</sup> Bottom Hole Location If Different From Surface

UL or lot no.	Section	Township	Range	Lot Ida	Feet from the	North/South line	Feet from the	East/West line	County

<sup>12</sup> Dedicated Acres 1.60	<sup>13</sup> Joint or Infill	<sup>14</sup> Consolidation Code	<sup>15</sup> Order No.
---------------------------------------	-------------------------------	----------------------------------	-------------------------

NO ALLOWABLE WILL BE ASSIGNED TO THIS COMPLETION UNTIL ALL INTERESTS HAVE BEEN CONSOLIDATED  
OR A NON-STANDARD UNIT HAS BEEN APPROVED BY THE DIVISION

<div>16</div> <div>5281.98'</div> <div>1850'</div> <div>1830'</div> <div>SF-047017-B</div> <div>13</div> <div>5280.00'</div> <div>5282.64'</div> <div>RECEIVED MAR 24 1997 OIL CON. DIV. DIST. 3</div> <div>97 MAR 16 PM 1:27</div>	<div>17 OPERATOR CERTIFICATION</div> <p>I hereby certify that the information contained herein is true and complete to the best of my knowledge and belief</p> <div>Peggy Bradfield</div> <div>Signature</div> <div>Peggy Bradfield</div> <div>Printed Name</div> <div>Regulatory Administrator</div> <div>Title</div> <div>1-15-97</div> <div>Date</div>
	<div>18 SURVEYOR CERTIFICATION</div> <p>I hereby certify that the well location shown on this plat was plotted from field notes of actual surveys made by me or under my supervision, and that the same is true and correct to the best of my belief.</p> <div>11/25/96</div> <div>Date of Survey</div> <div>Signature and Seal of Professional Surveyor</div> <div>NEALE C. EDWARDS NEW MEXICO 6857</div> <div>6857</div> <div>Certificate Number</div>

OPERATIONS PLAN

**Well Name:** Angel Peak B #14R  
**Location:** 1850' FNL, 1830' FEL Section 13, T-28-N, R-11-W  
 San Juan County, New Mexico  
 Latitude 36° 39.87, Longitude 107° 51.7  
**Formation:** Fulcher Kutz Pictured Cliffs  
**Elevation:** 5818' GL

Formation:	Top	Bottom	Contents
Surface	Nacimiento	754'	
Ojo Alamo	754'	885'	aquifer
Kirtland	885'	1570'	
Fruitland	1570'	1868'	gas
Fruitland Coal	1711'	1877'	gas
Pictured Cliffs	1868'		gas
Total Depth	2200'		

**Logging Program:** Hi Res Ind, Den/Neut, MRL/GR to Total Depth.

**Mud Program:**

Interval	Type	Weight	Vis.	Fluid Loss
0- 120'	Spud	8.4-9.0	40-50	no control
120-2200'	LSND	8.4-9.0	40-60	no control

**Casing Program (as listed, equivalent, or better):**

Hole Size	Depth Interval	Csg. Size	Wt.	Grade
12 1/4"	0 - 120'	8 5/8"	23.0#	M-50
6 1/4"	0 - 2200'	3 1/2"	7.7#	WC-70

**Tubing Program:** - none

**Float Equipment:** 8 5/8" surface casing - saw tooth guide shoe.  
Centralizers will be run in accordance with Onshore Order #2.

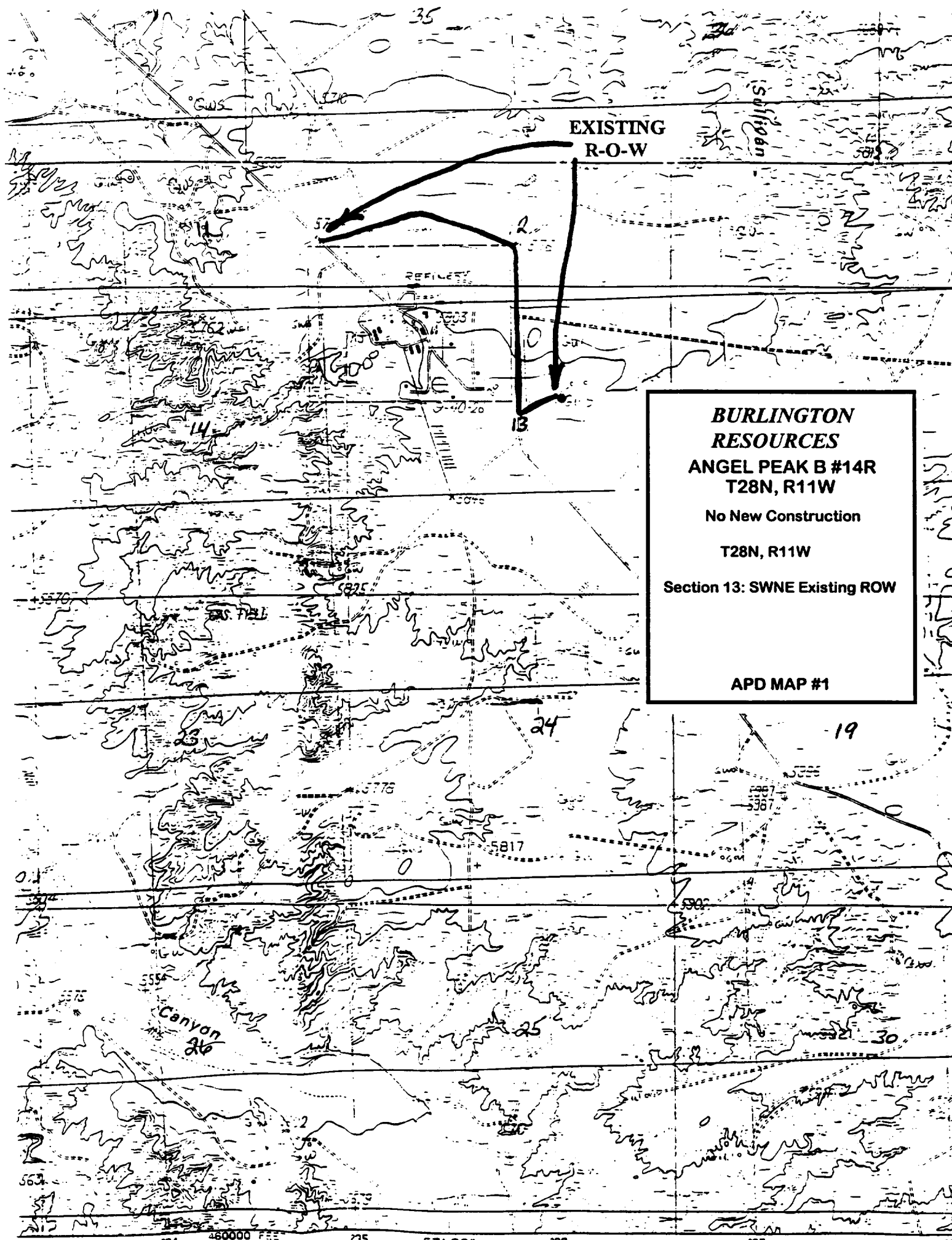
3 1/2" production casing - float shoe on bottom. Three centralizers run every other joint above shoe. Four centralizers run every 3rd joint to the base of the Ojo Alamo @ 885'. Two turbolizing type centralizers - one below and one into the base of the Ojo Alamo @ 885'. Standard centralizers thereafter every fourth joint up to the base of the surface pipe.

**Wellhead Equipment:** 8 5/8" x 3 1/2" x 11" 2000 psi screw on independent wellhead.

**Cementing:**

8 5/8" surface casing - cement with 129 sx Class "B" cement with 1/4# flocele/sx and 3% calcium chloride (149 cu.ft. of slurry, 200% excess to circulate to surface). WOC 12 hrs. Test casing to 600 psi for 30 minutes.

3 1/2" production casing - Lead w/244 sx of 65/35 Class "B" Poz w/6% gel, 2% calcium chloride, and 1/4# flocele/sx. Tail w/100 sx Class "B" w/2% calcium chloride (549 cu.ft. of slurry, 75% excess to circulate to surface). WOC 12 hrs. If cement does not circulate to surface, a CBL will be run during completion to determine TOC.



EXISTING  
R-O-W

**BURLINGTON  
RESOURCES**  
**ANGEL PEAK B #14R**  
**T28N, R11W**

No New Construction

T28N, R11W

Section 13: SWNE Existing ROW

APD MAP #1

Canyon  
26