

District I
1625 N. French Dr., Hobbs, NM 88240
District II
811 South First, Artesia, NM 88210
District III
1000 Rio Brazos Road, Aztec, NM 87410
District IV
2040 South Pacheco, Santa Fe, NM 87505

State of New Mexico
Energy Minerals and Natural Resources

Form C-101
Revised March 17, 1999

Oil Conservation Division
2040 South Pacheco
Santa Fe, NM 87505

Submit to appropriate District Office
State Lease - 6 Copies
Fee Lease - 5 Copies

AMENDED REPORT

APPLICATION FOR PERMIT TO DRILL, RE-ENTER, DEEPEN, PLUGBACK, OR ADD A ZONE

¹ Operator Name and Address Amoco Production Company P. O. Box 3092 Houston, Texas 77253		² OGRID Number 000778
³ Property Code 000570		⁵ Property Name Gallegos Canyon Unit
		⁶ Well No. 556

⁷ Surface Location									
UL or lot no. F	Section 18	Township 28N	Range 11W	Lot Idn	Feet from the 1680	North/South line North	Feet from the 1520	East/West line West	County San Juan

⁸ Proposed Bottom Hole Location If Different From Surface									
UL or lot no.	Section	Township	Range	Lot Idn	Feet from the	North/South line	Feet from the	East/West line	County
⁹ Proposed Pool 1 Kutz Pictured Cliffs, West					¹⁰ Proposed Pool 2				

¹¹ Work Type Code N - New Drill	¹² Well Type Code Gas	¹³ Cable/Rotary Rotary/Top Drive	¹⁴ Lease Type Code State	¹⁵ Ground Level Elevation 5488'
¹⁶ Multiple No	¹⁷ Proposed Depth 1579'	¹⁸ Formation Pictured Cliffs	¹⁹ Contractor Aztec	²⁰ Spud Date 5/20/2001

²¹ Proposed Casing and Cement Program					
Hole Size	Casing Size	Casing weight/foot	Setting Depth	Sacks of Cement	Estimated TOC
(1) 8 3/4"	7"	23#	135'	115 SXS CLS B	Surface
(2) 6 1/4"	4 1/2"	10.5#	1579'	164 SXS CLS B	Surface

²² Describe the proposed program. If this application is to DEEPEN or PLUG BACK, give the data on the present productive zone and proposed new productive zone. Describe the blowout prevention program, if any. Use additional sheets if necessary.

OBJECTIVE: Drill 150' into the Pictured Cliffs, set 4 1/2" Casing to TD, Perf & Stimulate the Pictured Cliffs interval. Run Cased Hole (GR-CCL-TDT) logs: TDT from PBDT. GR- CCL from PDTB to Surface.

(1) Circulate Cement to Surface

(2) Set Casing 150' below top of Pictured Cliffs.

Mud Program: 0' - 135' Type - Spud Weight 8.6 - 9.2
135' - TD' Type - Water Weight 8.6 - 9.2

The hole will require sweeps to keep unloaded while fresh water drilling. Let hole conditions dictate frequency

Completion: Rigless, Single Stage Hydraulic Frac.

²³ I hereby certify that the information given above is true and complete to the best of my knowledge and belief.

Signature:

Printed name: **Mary Corley**

Title: **Sr. Regulatory Analyst**

Date: **03/13/2001**

Phone: **281-366-4491**

OIL CONSERVATION DIVISION

Approved by:

Title: **DEPUTY OIL & GAS INSPECTOR, DIST. 98**

Approval Date:

Conditions of Approval:

Attached

Expiration Date:

District I
PO Box 1980, Hobbs NM 88241-1980
District II
PO Drawer KK, Aramis, NM 87211-0719
District III
1000 Rio Brazos Rd., Aztec, NM 87410
District IV
PO Box 2088, Santa Fe, NM 87504-2088

State of New Mexico
Energy, Minerals & Natural Resources Department

OIL CONSERVATION DIVISION
PO Box 2088
Santa Fe, NM 87504-2088

Form C-102
Revised February 21, 1994

Instructions on back
Submit to Appropriate District Office
State Lease - 4 Copies
Fee Lease - 3 Copies

☐ AMENDED REPORT

WELL LOCATION AND ACREAGE DEDICATION PLAT

¹ API Number 30-045-30595		² Pool Code 79680	³ Pool Name KUTZ PICTURED CLIFFS, WEST
⁴ Property Code 00570	⁵ Property Name GALLEGOS CANYON UNIT		⁶ Well Number # 556
⁷ OGRID No. 000778	⁸ Operator Name AMOCO PRODUCTION COMPANY		⁹ Elevation 5488

¹⁰ Surface Location

UL or Lot No.	Section	Township	Range	Lot Idn	Feet from the	North/South line	Feet from the	East/West line	County
F	18	28 N	11 W		1680	NORTH	1520	WEST	SAN JUAN

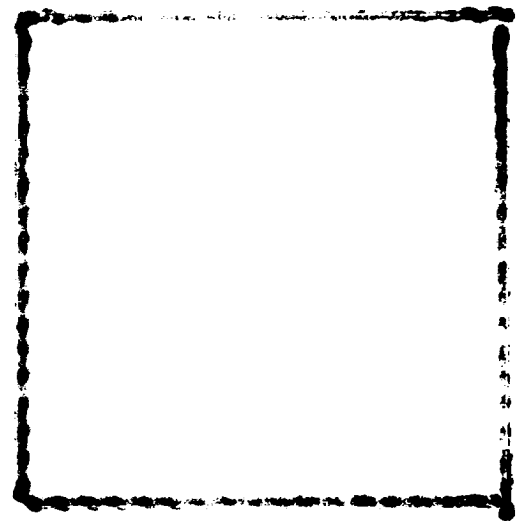
¹¹ Bottom Hole Location If Different From Surface

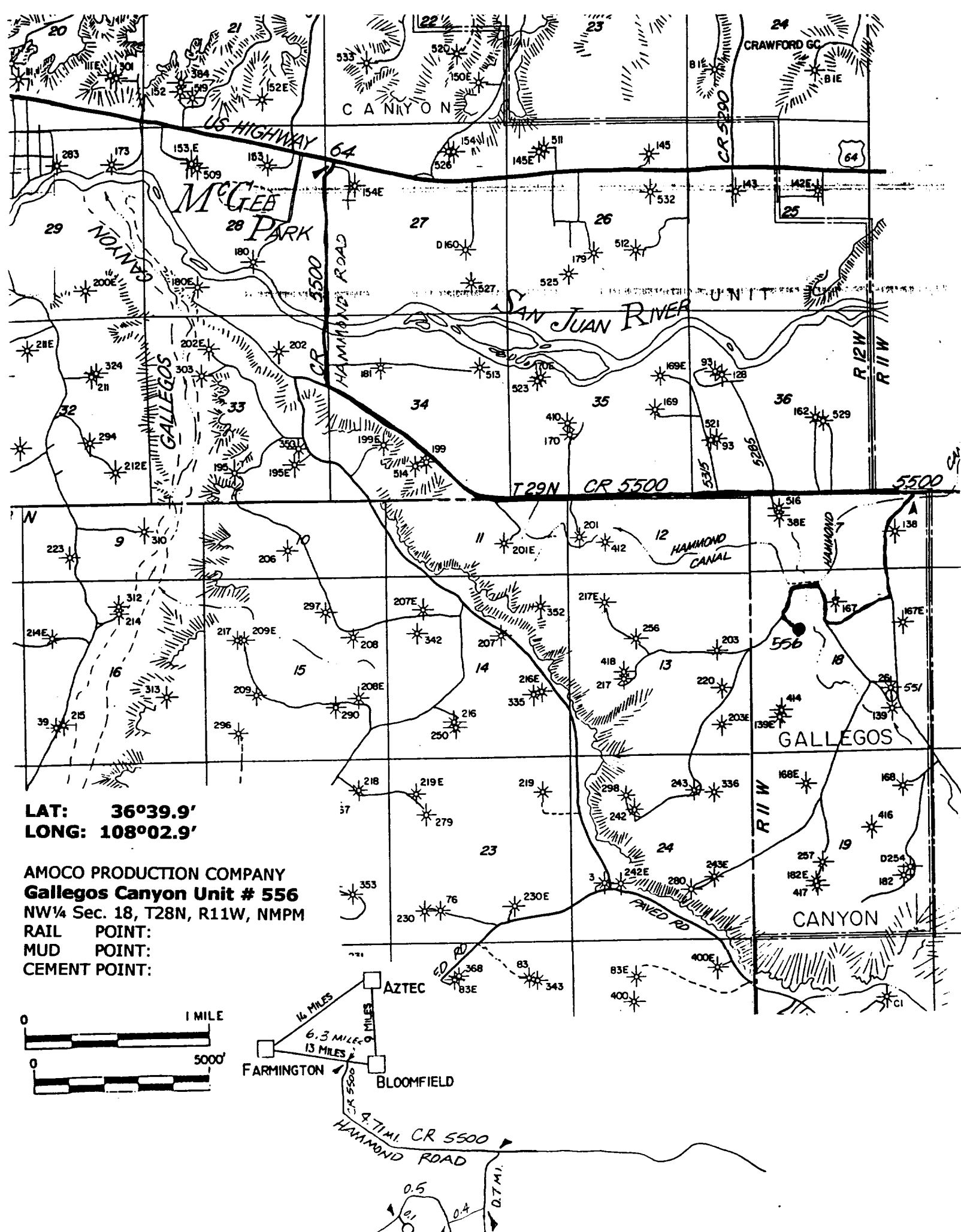
⁷ UL or lot no.	Section	Township	Range	Lot Idn	Feet from the	North/South line	Feet from the	East/West line	County

¹² Dedicated Acres 167.8NN	¹³ Joint or Infill	¹⁴ Consolidation Code	¹⁵ Order No.
--	-------------------------------	----------------------------------	-------------------------

NO ALLOWABLE WILL BE ASSIGNED TO THIS COMPLETION UNTIL ALL INTERESTS HAVE BEEN CONSOLIDATED
OR A NON-STANDARD UNIT HAS BEEN APPROVED BY THE DIVISION

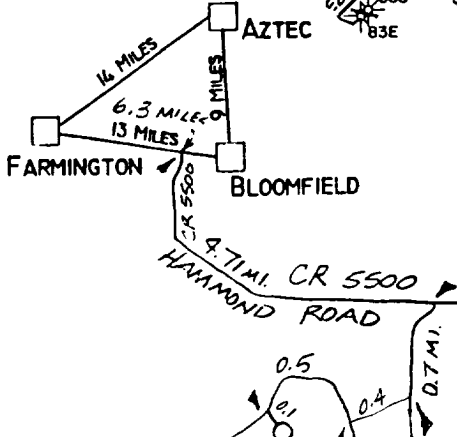
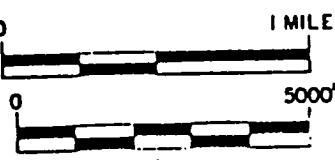
	<p>¹⁷ OPERATOR CERTIFICATION</p> <p>I hereby certify that the information contained herein is true and complete to the best of my knowledge and belief.</p> <p>Signature: <i>Mary Corley</i></p> <p>Printed Name: MARY CORLEY</p> <p>Title: SR. REGULATORY ANALYST</p> <p>Date: 02/28/2001</p>
	<p>¹⁸ SURVEYOR CERTIFICATION</p> <p>I hereby certify that the well location shown on this plat was plotted from field notes of actual surveys made by me or under my supervision, and that the same is true and correct to the best of my belief.</p> <p>September 27, 1999</p> <p>Date of Survey</p> <p>Signature and Seal of Professional Surveyor</p> <p></p> <p>7016 Certificate Number</p>





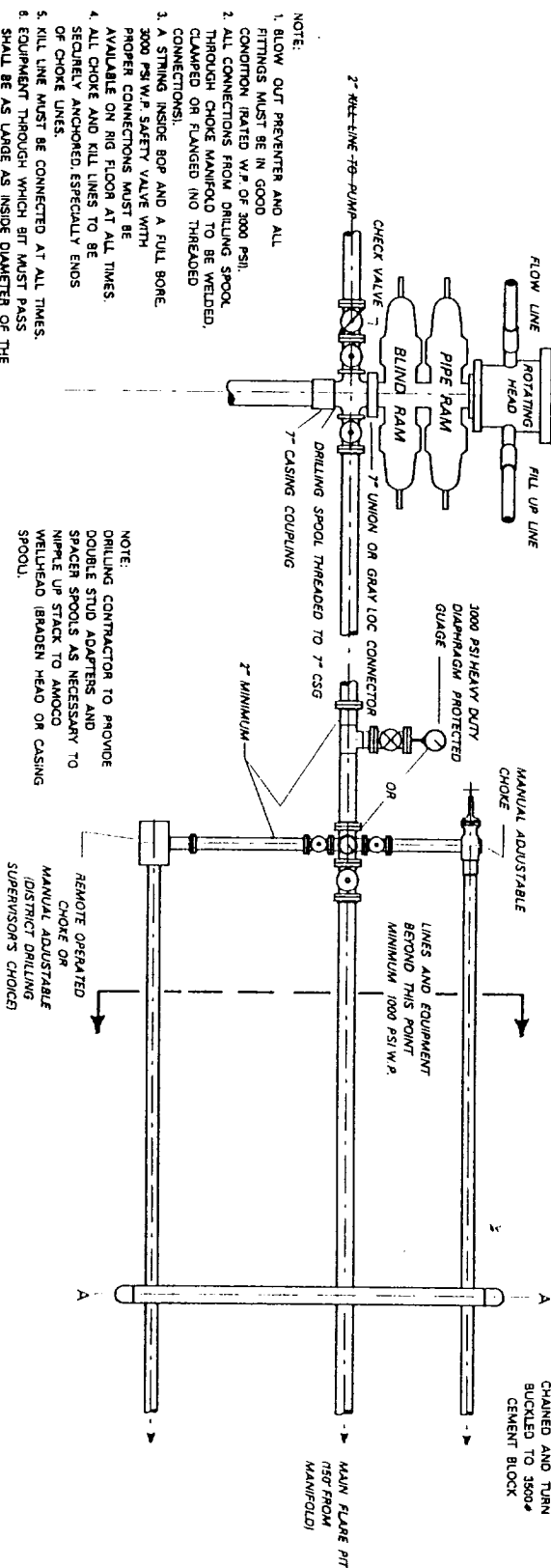
LAT: 36°39.9'
LONG: 108°02.9'

AMOCO PRODUCTION COMPANY
Gallegos Canyon Unit # 556
 NW¼ Sec. 18, T28N, R11W, NMPM
 RAIL POINT:
 MUD POINT:
 CEMENT POINT:





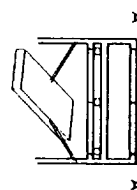
MINIMUM BLOW-OUT PREVENTER REQUIREMENTS $\frac{7}{8}$ " OR 1" (NOMINAL) 3,000 PSI W.P. Typical Dakota / Mesaverde Air / Mud (SRBU)



- NOTE:
1. BLOW-OUT PREVENTER AND ALL FITTINGS MUST BE IN GOOD CONDITION (RATED W.P. OF 3000 PSI).
 2. ALL CONNECTIONS FROM DRILLING SPOOL, THROUGH CHOKE MANIFOLD TO BE WELDED, CLAMPED OR FLANGED (NO THREADED CONNECTIONS).
 3. A STING INSIDE BOP AND A FULL BORE 3000 PSI W.P. SAFETY VALVE WITH PROPER CONNECTIONS MUST BE AVAILABLE ON RIG FLOOR AT ALL TIMES.
 4. ALL CHOKE AND KILL LINES TO BE SECURELY ANCHORED, ESPECIALLY ENDS OF CHOKE LINES.
 5. KILL LINE MUST BE CONNECTED AT ALL TIMES.
 6. EQUIPMENT THROUGH WHICH BIT MUST PASS SHALL BE AS LARGE AS INSIDE DIAMETER OF THE CASING BEING DRILLED THROUGH.
 7. MUST HAVE UPPER AND LOWER KELLY COCK ON KELLY.
 8. BLOW-OUT PREVENTER CLOSING EQUIPMENT SHALL HAVE SUFFICIENT CAPACITY TO FULFILL REQUIREMENTS OF CURRENT FEDERAL REGISTER (42 CFR) DATED NOV. 1988.
 9. NO COLLECTOR BOTTLES, SURGE TANKS OR BUFFER CHAMBERS DOWNSTREAM OF THE CHOKE MANIFOLD.
 10. ALL TURNS TO BE MADE WITH TARGETED TEES (18-24" MIN.), NO BENDS OR SWEEPS IN LINE FROM BOP TO CHOKE MANIFOLD.
 11. IF A FLEXIBLE HOSE IS TO BE USED AS A CHOKE LINE, IT MUST BE APPROVED BY AMOCO PRIOR TO RIGGING UP.
 12. LOCK TO BE INSTALLED ON BLIND RAM CONTROL.

- NOTE:
- DRILLING CONTRACTOR TO PROVIDE DOUBLE STUD ADAPTERS AND SPACER SPOOLS AS NECESSARY TO NIPPLE UP STACK TO AMOCO WELHEAD (BRADEN HEAD ON CASING SPOOL).
- NOTE:
1. ALL UNMARKED VALVES TO BE FULL-OPENING GATE OR PLUG VALVES, METAL TO METAL SEAL, 3000 PSI W.P.

- NOTE:
1. CHOKE ASSEMBLY VERTICAL FOR ILLUSTRATION ONLY. SHOULD BE HORIZONTAL ON RIG. ANCHOR ALL LINES SECURELY EVERY 30' AND WITHIN 5' OF END OF LINE.
 2. DRILLING CONTRACTOR TO BE RESPONSIBLE FOR PROVIDING ALL LINES AND VALVES.



CHAINED AND TURN
 BUCKLED TO 3500#
 CEMENT BLOCK

MAIN FLARE PIT
 150' FROM
 MANIFOLD