

District II - (505) 748-1283
811 S. First
Artesia, NM 88210
District III - (505) 334-6178
1000 Rio Brazos Road
Aztec, NM 87410
District IV - (505) 827-7131
2040 S. Pacheco
Santa Fe, NM 87505

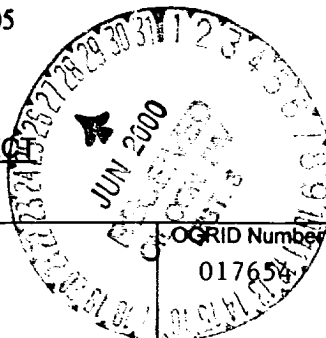
NEW MEXICO

Energy Minerals and Natural Resources Department
Oil Conservation Division
2040 South Pacheco Street
Santa Fe, New Mexico 87505
(505) 827-7131

Revised 06/9

SUBMIT ORIGINAL
PLUS 2 COPIES
TO APPROPRIATE
DISTRICT OFFICE

APPLICATION FOR
WELL WORKOVER PROJECT



I. Operator and Well								
Operator name & address Phillips Petroleum Co. 5525 Hwy 64 Farmington, NM 87401						OGRID Number 017654		
Contact Party Patsy Clugston						Phone 505-599-3454		
Property Name San Juan 29-5 Unit				Well Number 8		API Number 30-039-07490		
UL K	Section 35	Townshi P 29N	Range 5W	Feet From The 1650'	North/South Line south	Feet From The 1650	East/West Line West	County Rio Arriba

II. Workover	
Date Workover Commenced: 11/1/99	Previous Producing Pool(s) (Prior to Workover): Blanco Mesaverde
Date Workover Completed: 11/13/99	

- III. Attach a description of the Workover Procedures performed to increase production.
IV. Attach a production decline curve or table showing at least twelve months of production prior to the workover and at least three months of production following the workover reflecting a positive production increase.
V. AFFIDAVIT:

State of New Mexico)
County of San Juan) ss.
Patsy Clugston, being first duly sworn, upon oath states:
1. I am the Operator, or authorized representative of the Operator, of the above-referenced Well.
2. I have made, or caused to be made, a diligent search of the production records reasonably available for this Well.
3. To the best of my knowledge, this application and the data used to prepare the production curve and/or table for this Well are complete and accurate.

Signature Patsy Clugston Title Sr. Regulatory Clerk Date 6-22-00
SUBSCRIBED AND SWORN TO before me this 22 day of June, 2000
Gillian Armenta
Notary Public
My Commission expires: 10/2/2003

OFFICIAL SEAL
GILLIAN ARMENTA
NOTARY PUBLIC - NEW MEXICO
Notary Bond Filed with Secretary of State
MY COMMISSION EXPIRES

FOR OIL CONSERVATION DIVISION USE ONLY:

- VI. CERTIFICATION OF APPROVAL:
This Application is hereby approved and the above-referenced well is designated a Well Workover Project and the Division hereby verifies the data shows a positive production increase. By copy hereof, the Division notifies the Secretary of the Taxation and Revenue Department of this Approval and certifies that this Well Workover Project was completed on 11/12/99.

Signature District Supervisor <u>[Signature]</u>	OCD District <u>3</u>	Date <u>9/1/00</u>
---	--------------------------	-----------------------

- VII. DATE OF NOTIFICATION TO THE SECRETARY OF THE TAXATION AND REVENUE DEPARTMENT: _____

ARMED AND DANGEROUS OFFICE

**San Juan 29-5 Unit #8
SF-078917; 1650' FSL & 1650' FWL
Section 35, T29N, R5W; Rio Arriba County, NM**

Procedure used to add pay and stimulate the Lewis Shale interval within the existing Mesaverde formation.

11/1/99

MIRU Key Energy #40. Kill well w/2% KCL. ND WH & NU BOPs. PT OK. COOH w/2-3/8" tubing. RIH w/5-1/2" scraper & tagged fill @ 6783'. POOH. RIH w/5-1/2" N-1 CIBP & set @ 6180'. Load hole w/90 bbls 2% KCL water and PT plug, casing and rams to 550 psi for 30 minutes - GOOD test. RU Blue Jet & ran GR/CCL/CBL from 6180' to surface. TOC @ 5340'.

RU BJ to do cement squeeze. RIH & set 5-1/2" cement retainer @ 4935'. PT - OK. Established injection rate. Pumped 30 sx CI H cement w/2% CaCl₂ @ 15.8 ppg. Stung out of retainer w/350 psi of squeeze pressure. Reversed out 1 bbl good cement to pit. POOH. WOC.

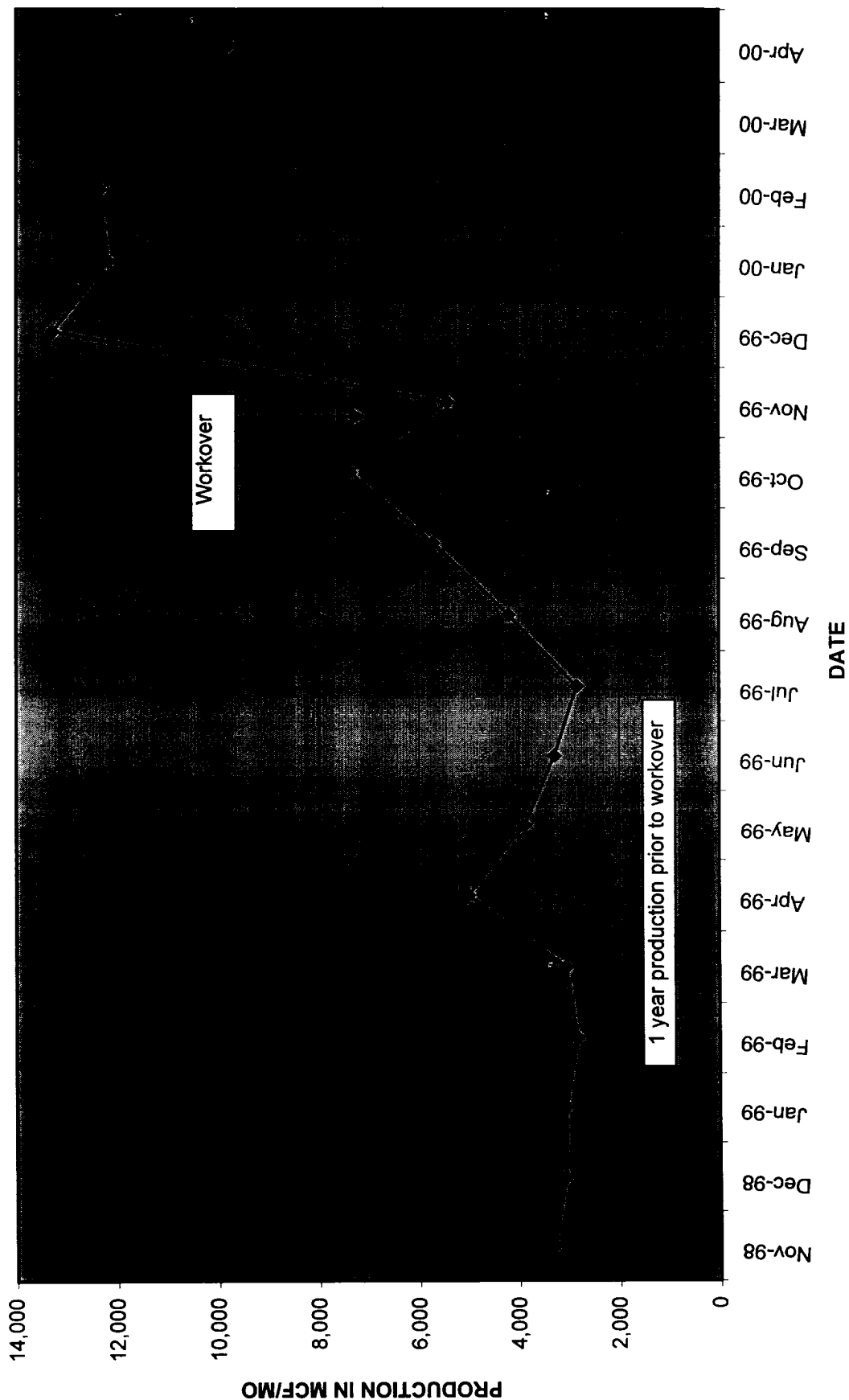
RIH 4-3/4" bit & tagged up @ 4935'. Drilled out cement retainer @ 4935'. Drilled out 65' of hard cement below retainer to 5000'. Circled hole clean. PT casing and squeeze holes & rams to 1000 psi - 20 minutes. Good test. POOH w/bit.

RU Blue Jet & perforated Lewis Shale @ 1 spf .38" holes as follows:

5762' - 5764' (3'); 5611' - 5613' (3'); 5422' - 5424' (3');	5687' - 5689' (3'); 5570' - 5572' (3'); 5406' - 5408' (3');	5670' - 5672' (3'); 5554' - 5556' (3'); 5210' - 5212' (3');	5654' - 5656' (3'); 5433' - 5435' (3'); 5178' - 5180' (3'); Total 36 holes
---	---	---	--

RIH w/5-1/2" packer & set @ 5069'. RU BJ to acidize. Pumped 1000 gal 15% HCL & ballsealers. Unset packer & knocked off balls. POOH w/packer. RU to frac. Set packer @ 4966'. PT OK. RU BJ to frac. Pumped 70,178 gal 60 Quality N₂ consisting of 30,828 gal of 30# X-link gel & 872,000 scf N₂ gas. Pumped a 4200 gal foam pad followed by 65,978 gal of foam carrying 211,280 # of 20/40 Brady sand. ATR - 32 bpm. ATP - 3450 psi. ISDP - 200 psi. Flowed back on 1/4" choke for approx. 13 hrs, then opened up on 2" chokes. SI well to build up. Ran a sinker bar on sand line & tagged @ 3200'. Surged bridge free & ran SL to 4700'. Swabbed well & flowed back 37 more hours. RD flowback equipment. Unset packer @ 4966'. COOH. RIH w/4-3/4" but * tagged fill @ 5880'. Cleaned out sand to 6180'. Drilled out CIBP @ 6180'. Continue cleaning out to 6788' (PBTD). COOH. RIH w/2-3/8" tubing and set @ 6711' with "F" nipple set @ 6679'. ND BOPS & NU WH. PT- OK. Pumped off check & RD & released rig 11/13/99. Turned well over to production department.

29-5 #8 WORKOVER PRODUCTION INCREASE



API #	29-5 #8	mcf/Month
30-039-07490	Nov-98	3,317
	Dec-98	3,070
	Jan-99	3,062
	Feb-99	2,829
	Mar-99	3,050
	Apr-99	5,008
	May-99	3,874
	Jun-99	3,283
	Jul-99	2,838
	Aug-99	4,196
	Sep-99	5,718
	Oct-99	7,372
	Nov-99	5,427
	Dec-99	13,277
	Jan-00	12,169
	Feb-00	12,349
	Mar-00	10,147
	Apr-00	9,792