

NEW MEXICO OIL CONSERVATION COMMISSION
Santa Fe, New Mexico

Form C-101
Revised (12/1/55)

NOTICE OF INTENTION TO DRILL

Notice must be given to the District Office of the Oil Conservation Commission and approval obtained before drilling or recompletion begins. If changes in the proposed plan are considered advisable, a copy of this notice showing such changes will be returned to the sender. Submit this notice in QUINTUPLICATE. One copy will be returned following approval. See additional instructions in Rules and Regulations of the Commission. If State Land submit 6 Copies Attach Form C- 128 in triplicate to first 3 copies of form C-101 on all wells

Farmington, New Mexico

May 28, 1957

(Place)

(Date)

OIL CONSERVATION COMMISSION
SANTA FE, NEW MEXICO

Gentlemen:

You are hereby notified that it is our intention to commence the Drilling of a well to be known as

PACIFIC NORTHWEST PIPELINE CORPORATION

(Company or Operator)

29-5

(Lease)

Well No. 30-28

in

L

(Unit)

The well is

located 1650' feet from the South line and 1150' feet from the West line of Section 28, T. 29 North, R. 5 West, NMPM.

(GIVE LOCATION FROM SECTION LINE)

Alanco Mesa Verde

Pool,

Rio Arriba

County

If State Land the Oil and Gas Lease is No. NM 03188

If patented land the owner is

Address

We propose to drill well with drilling equipment as follows: Rotary Rig 0' to 6030'

The status of plugging bond is Blanket

Drilling Contractor Arapahoe Drilling

We intend to complete this well in the Mesa Verde formation at an approximate depth of 6030'

CASING PROGRAM

We propose to use the following strings of Casing and to cement them as indicated:

Size of Hole	Size of Casing	Weight per Foot	New or Second Hand	Depth	Sacks Cement
13-3/4"	10-3/4"	32.75	New	200'	200
9-5/8"	7-5/8"	24.6	New	3880'	200
6-3/4"	5-1/2"	14.	New	6030'	150

If changes in the above plans become advisable we will notify you immediately.

ADDITIONAL INFORMATION Mesa Verde to be fractured thru perms using approx 150,000 gals water. Clean out to total depth, run tubing and complete well.

The W/2 of Section 28, containing 320 acres, is dedicated to this well.

100% Pacific Northwest MAY 29 1957

Approved _____, 19____
Except as follows:

OIL CONSERVATION COMMISSION

By _____

Sincerely yours,

PACIFIC NORTHWEST PIPELINE CORPORATION

(Company or Operator)

By Original signed by T. A. Dugan

Position Assistant Division Manager

Send Communications regarding well to

Name PACIFIC NORTHWEST PIPELINE CORPORATION

Address 405 1/2 W. Broadway, Farmington, New Mexico

NEW MEXICO
OIL CONSERVATION COMMISSION

Form C-128

Well Location and/or Gas Proration Plat

Date May 28, 1957

Operator PACIFIC NORTHWEST PIPELINE CORPORATION Lease 29-5

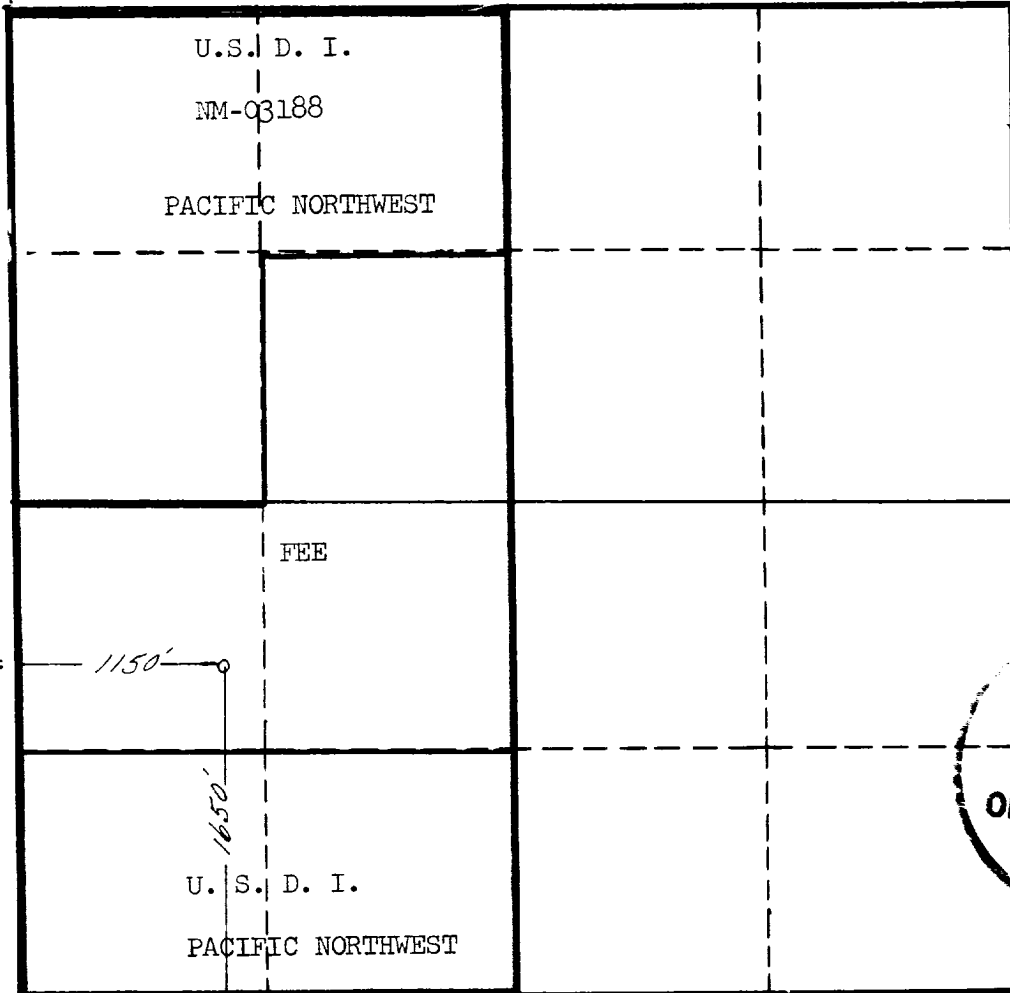
Well No. 30-28 Section 28 Township 29 North Range 5 West NMPM

Located 1650' Feet From South Line, 1150' Feet From West Line,

Rio Arriba County, New Mexico. G. L. Elevation 6694.9 Ungraded Ground

Name of Producing Formation Mesa Verde Pool Blanco Dedicated Acreage 320

(Note: All distances must be from outer boundaries of Section)



SCALE: 1"=1000'

NOTE
This section of
form is to be
used for gas
wells only.



1. Is this Well a Dual Comp. ? Yes No X .
2. If the answer to Question 1 is yes, are there any other dually completed wells within the dedicated acreage? Yes No .

Name Original signed by T. A. Dugan
Position Assistant Division Manager
Representing PACIFIC NORTHWEST PIPELINE CORPORATION
Address 405 1/2 W. Broadway, Farmington, New Mexico

This is to certify that the above plat was prepared from field notes of actual surveys made by me or under my supervision and that the same are true and correct to the best of my knowledge and belief.

Date Surveyed Original signed by T. A. Dugan
Registered Professional Engineer and/or
Land Surveyor

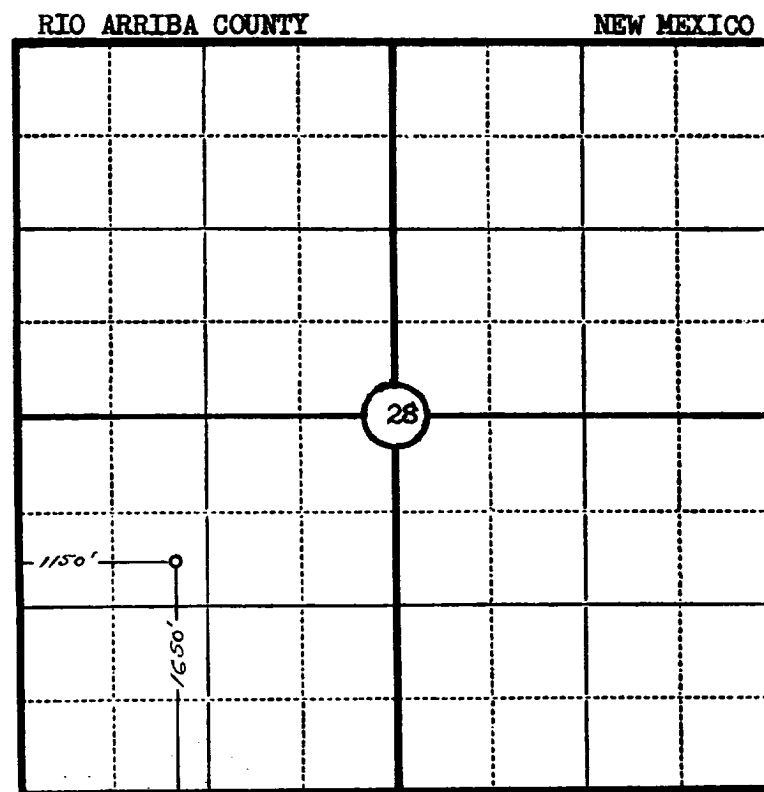
Company..... **PACIFIC NORTHWEST PIPELINE CORPORATION**

Lease..... 29-5 Well No. 30-28

Sec. 28 , T. 29 N. , R. 5 W. N.M.P.M.

Location..... **1650' FROM THE SOUTH LINE AND 1150' FROM THE WEST LINE.**

Elevation..... **6694.9 UNGRADED GROUND.**



This is to certify that the above plat was prepared from field notes of actual surveys made by me or under my supervision and that the same are true and correct to the best of my knowledge and belief.

Seal:

James P. Leese

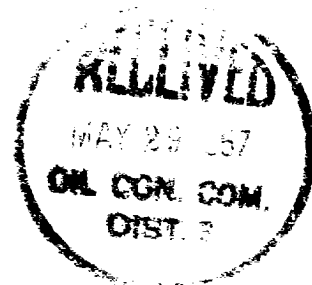
Registered Land Surveyor.

James P. Leese

N. Mex. Reg. No. 1463

Surveyed **23 August** , 19 **55**

SAN JUAN ENGINEERING COMPANY, FARMINGTON, N. M.



OIL CONSERVATION COMMISSION		
AZTEC DISTRICT OFFICE		
No. Copies Received		5
DISTRIBUTION		
	No. Furnished	
Operator	1	
Santa Fe	1	
Peroration Office		
State Land Office		
U. S. G. S	2	
Transporter		
File	1	✓