

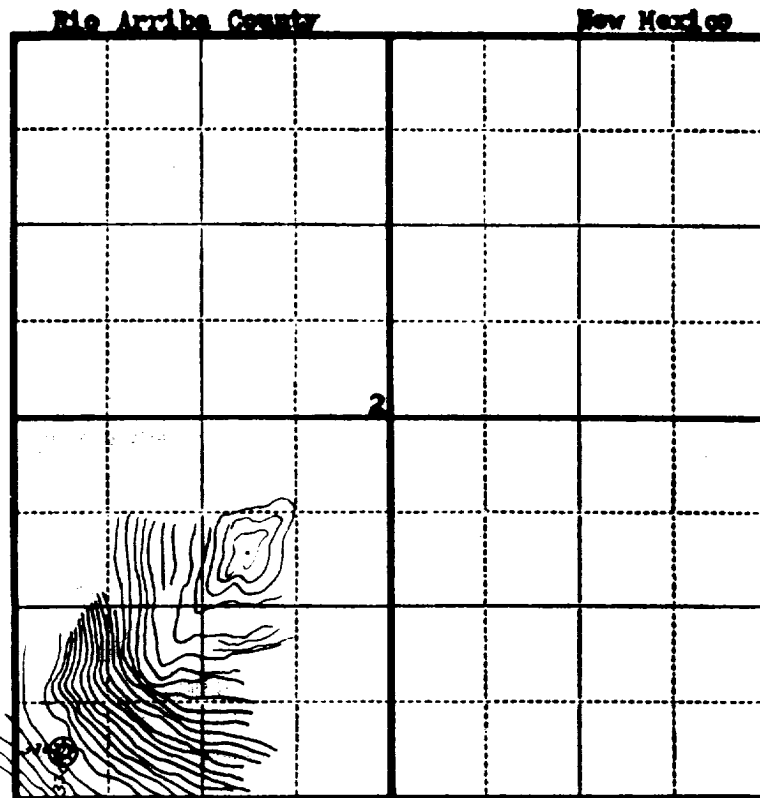
Note
W/2 Dedicated
318.1 ac

Company Bay Petroleum Corporation

Lease _____ Well No. _____

Sec. 2 T. 29 N R. 7 W N.M.P.M.

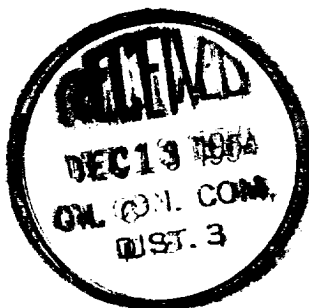
Location 330' from the South line and 330' from the West line.



330' Location is located on rough top NE from location a series of sandstone ledges is encountered and would be difficult to build a location site on.

Scale—4 inches equals 1 mile.

This is to certify that the above plat was prepared from field notes of actual surveys made by me or under my supervision and that the same are true and correct to the best of my knowledge and belief.



Seal:

Charles J. Finklea

Registered Professional
 Engineer and Land Surveyor.

Charles J. Finklea
 N.Mex. Reg. No. 1302

Surveyed October 1, 1902