

Note  
 W/2 Dedda Dedicated  
 318.1 ac.

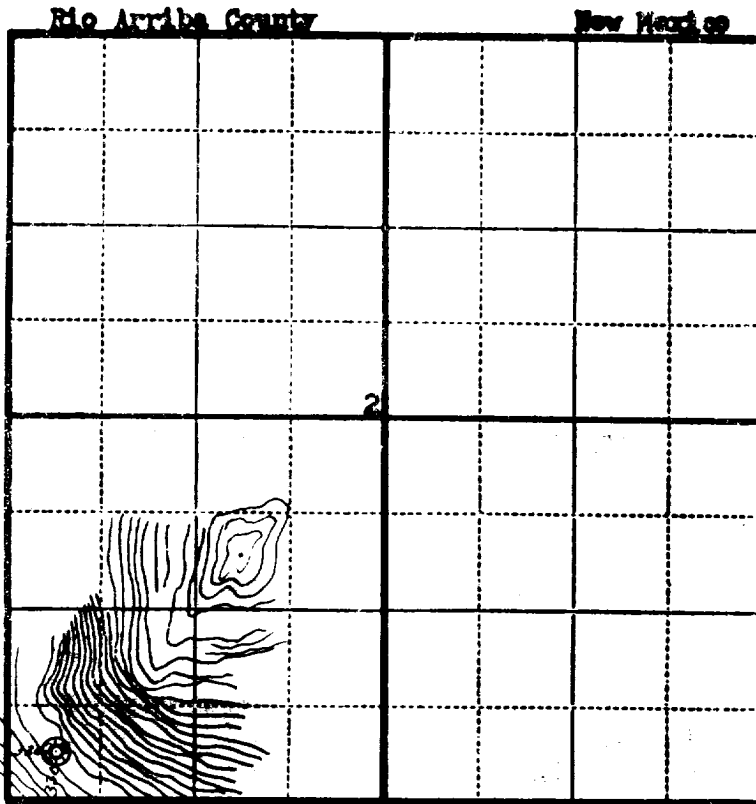
MANNING STATE N. 1  
 5015 C

Company Bay Petroleum Corporation

Lease \_\_\_\_\_ Well No. \_\_\_\_\_

Sec. 2 T. 29 N R. 7 W N.M.P.M.

Location 330' from the South line and 330' from the West line.



330' Location is located on rough NE from location a series of sandstone ledges is encountered and would be difficult to find a location site on

Scale—4 inches equals 1 mile.

This is to certify that the above plat was prepared from field notes of actual surveys made by me or under my supervision and that the same are true and correct to the best of my knowledge and belief.

*Charles J. Finklea*

Seal:

Registered Professional  
 Engineer and Land Surveyor.

Charles J. Finklea  
 N.Mex. Reg. No. 1302

Surveyed

October 1, 1952

