

UNITED STATES
DEPARTMENT OF THE INTERIOR
GEOLOGICAL SURVEY

APPLICATION FOR PERMIT TO DRILL, DEEPEN, OR PLUG BACK

1a. TYPE OF WORK

DRILL ☒ RE-ENTRYDEEPEN ☐PLUG BACK ☐

b. TYPE OF WELL

OIL
WELL ☐GAS
WELL ☒

OTHER

SINGLE
ZONE ☐MULTIPLE
ZONE ☐

2. NAME OF OPERATOR

Dugan Production Corp.

3. ADDRESS OF OPERATOR

Box 234, Farmington, New Mexico 87401

4. LOCATION OF WELL (Report location clearly and in accordance with any State requirements.)

At surface

990' FSL -- 1650' FWL

At proposed prod. zone

14. DISTANCE IN MILES AND DIRECTION FROM NEAREST TOWN OR POST OFFICE*

25 miles west Dulce, New Mexico

15. DISTANCE FROM PROPOSED*
LOCATION TO NEAREST
PROPERTY OR LEASE LINE, FT.
(Also to nearest drlg. unit line, if any)

990'

16. NO. OF ACRES IN LEASE

320

17. NO. OF ACRES ASSIGNED
TO THIS WELL

160

18. DISTANCE FROM PROPOSED LOCATION*
TO NEAREST WELL, DRILLING, COMPLETED,
OR APPLIED FOR, ON THIS LEASE, FT.

None

19. PROPOSED DEPTH

3450'

20. ROTARY OR CABLE TOOLS

Rotary

21. ELEVATIONS (Show whether DF, RT, GR, etc.)

6387' DF

22. APPROX. DATE WORK WILL START*

4-15-75

23.

PROPOSED CASING AND CEMENTING PROGRAM

SIZE OF HOLE	SIZE OF CASING	WEIGHT PER FOOT	SETTING DEPTH	QUANTITY OF CEMENT
15"	10-3/4"	21.63#	172'	195 sx
8-3/4"	7"	20# & 23#	5202'	425 sx

This well was originally known as the Phillips Petroleum Mesa Unit 29-5 #2-3 and was completed as a Mesaverde gas well. It was plugged in 1963 by El Paso Natural Gas Company. We propose to pull the dry hole marker, clean out plugs to top of 7" casing at 250', screw into the 7" casing, and tie back to surface. We will then clean out to a depth of 3450', selectively perforate, and SWF the Pictured Cliffs formation. If commercial production is indicated tubing will then be run and the well completed.

IN ABOVE SPACE DESCRIBE PROPOSED PROGRAM: If proposal is to deepen or plug back, give data on present productive zone and proposed new productive zone. If proposal is to drill or deepen directionally, give pertinent data on subsurface locations and measured and true vertical depths. Give blowout preventer program, if any.

24.

Original signed by T. A. Dugan
SIGNED Thomas A. DuganTITLE Petroleum EngineerDATE 3-21-75

(This space for Federal or State office use)

PERMIT NO. _____

APPROVAL DATE _____

APPROVED BY gq

TITLE _____

DATE _____

CONDITIONS OF APPROVAL, IF ANY:

*See Instructions On Reverse Side

**NEW MEXICO OIL CONSERVATION COMMISSION
WELL LOCATION AND ACREAGE DEDICATION PLAT**

Form C-102
Supersedes C-128
Effective 1-1-65

All distances must be from the outer boundaries of the Section.

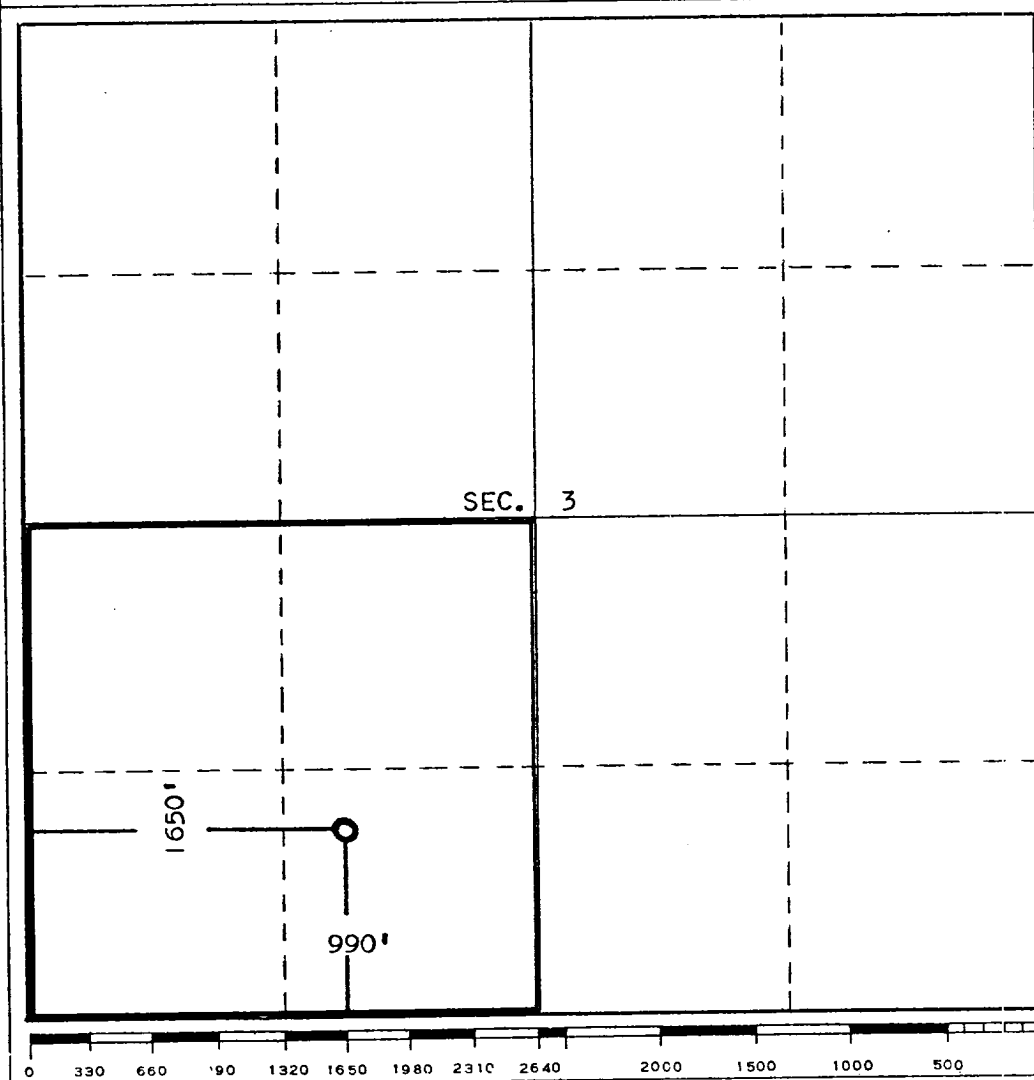
Operator Dugan Production Corp.			Lease Sherman		Well No. 1
Unit Letter N	Section 3	Township 29N	Range 5W	County Rio Arriba	
Actual Footage Location of Well: 990 feet from the South line and 1650 feet from the West line					
Ground Level Elev. 6387'	Producing Formation Pictured Cliffs		Pool Wildcat		Dedicated Acreage: 160 Acres

1. Outline the acreage dedicated to the subject well by colored pencil or hachure marks on the plat below.
2. If more than one lease is dedicated to the well, outline each and identify the ownership thereof (both as to working interest and royalty).
3. If more than one lease of different ownership is dedicated to the well, have the interests of all owners been consolidated by communitization, unitization, force-pooling, etc?

☐ Yes ☐ No If answer is "yes," type of consolidation _____

If answer is "no," list the owners and tract descriptions which have actually been consolidated. (Use reverse side of this form if necessary.) _____

No allowable will be assigned to the well until all interests have been consolidated (by communitization, unitization, forced-pooling, or otherwise) or until a non-standard unit, eliminating such interests, has been approved by the Commission.



CERTIFICATION

I hereby certify that the information contained herein is true and complete to the best of my knowledge and belief.

Original signed by T. A. Dugan

Name
Thomas A. Dugan
Position
Petroleum Engineer
Company
Dugan Production Corp.
Date
3-21-75

I hereby certify that the well location shown on this plat was plotted from field notes of actual surveys made by me or under my supervision, and that the same is true and correct to the best of my knowledge and belief.

3-21-75
Date Surveyed
Thomas A. Dugan
Registered Professional Engineer
XXXXXXXXXXXX
<i>Thomas A. Dugan</i>
Certificate No.
2373