

UNITED STATES
DEPARTMENT OF THE INTERIOR
GEOLOGICAL SURVEY

APPLICATION FOR PERMIT TO DRILL, DEEPEN, OR PLUG BACK

1a. TYPE OF WORK DRILL ☒ DEEPEN ☐ PLUG BACK ☐

b. TYPE OF WELL
OIL WELL ☐ GAS WELL ☒ OTHER ☐ SINGLE ZONE ☐ MULTIPLE ZONE ☐

2. NAME OF OPERATOR
Continental Oil Company

3. ADDRESS OF OPERATOR
152 N. Durbin, Casper, Wyoming 82601

4. LOCATION OF WELL (Report location clearly and in accordance with any State requirements.*)
At surface 1770' FNL, 944' FEL (SE NE)
At proposed prod. zone

14. DISTANCE IN MILES AND DIRECTION FROM NEAREST TOWN OR POST OFFICE*

10. DISTANCE FROM PROPOSED* LOCATION TO NEAREST PROPERTY OR LEASE LINE, FT. (Also to nearest drlg. unit line, if any)

16. NO. OF ACRES IN LEASE
640

17. NO. OF ACRES ASSIGNED TO THIS WELL
320

18. DISTANCE FROM PROPOSED LOCATION* TO NEAREST WELL, DRILLING, COMPLETED, OR APPLIED FOR, ON THIS LEASE, FT.

19. PROPOSED DEPTH
8550

20. ROTARY OR CABLE TOOLS
Rotary

21. ELEVATIONS (Show whether DF, RT, GR, etc.)
7050 GR

22. APPROX. DATE WORK WILL START*
July 1, 1973

5. LEASE DESIGNATION AND SERIAL NO.
NM - 18316

6. IF INDIAN, ALLOTTEE OR TRIBE NAME

7. UNIT AGREEMENT NAME

8. FARM OR LEASE NAME
Conoco 29-4

9. WELL NO.
2

10. FIELD AND POOL, OR WILDCAT
East San Juan-Basin Dakota

11. SEC., T., R., M., OR BLK. AND SURVEY OR AREA
Sec. 11-T29N-R4W

12. COUNTY OR PARISH
Rio Arriba

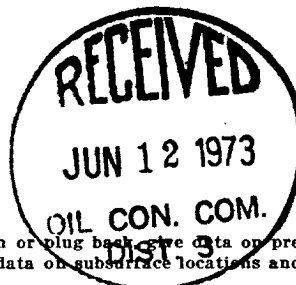
13. STATE
New Mexico

23. PROPOSED CASING AND CEMENTING PROGRAM

SIZE OF HOLE	SIZE OF CASING	WEIGHT PER FOOT	SETTING DEPTH	QUANTITY OF CEMENT
12 1/4"	8 5/8"	24#	200'	150 sacks class "A" cement
7 7/8"	5 1/2"	14#-15.5#-17#	8550'	300-200-110 sacks POZ "A" in three stages

It is proposed to drill the subject well to test for commercial gas production from the Dakota formation. No cores are planned, but DST tests may be made in the Gallup and Dakota zones after appropriate logs have been run.

The drilling rig will be equipped with a blow-out preventer, which will be tested daily. Also all equipment used in the drilling operations will be equipped with all safety devices prescribed by the U. S. Forest Service, and all operations will be conducted according to their rules and regulations.



IN ABOVE SPACE DESCRIBE PROPOSED PROGRAM: If proposal is to deepen or plug back, give data on present productive zone and proposed new productive zone. If proposal is to drill or deepen directionally, give pertinent data on subsurface locations and measured and true vertical depths. Give blowout preventer program, if any.

24. SIGNED J. A. Urban TITLE Administrative Supervisor DATE June 6, 1973
(This space for Federal or State office use)

PERMIT NO. _____ APPROVAL DATE _____
APPROVED BY JA TITLE _____ DATE _____
CONDITIONS OF APPROVAL, IF ANY:

UCCS(6) NMOCC - Aztec(2) U. S. Forest Service File(2)

NEW MEXICO OIL CONSERVATION COMMISSION
WELL LOCATION AND ACERAGE DEDICATION PLAT

All distances must be from the outer boundaries of the Section

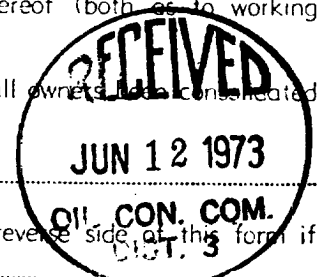
Operator CONTINENTAL OIL COMPANY			Lease SAN JUAN 29-4		Well No. 2
Unit Letter H	Section 11	Township 29 NORTH	Range 4 WEST	County RIO ARriba	
Actual Forage Location of Well:					
1770	feet from the	NORTH	line and	944	feet from the EAST line
Ground Level Elev 7050.0	Producing Formation Basin Dakota			Dedicated Acreage 320	Acres

1. Outline the acreage dedicated to the subject well by colored pencil or hatchure marks on the plat below.
2. If more than one lease is dedicated to the well, outline each and identify the ownership thereof (both as to working interest and royalty),
3. If more than one lease of different ownership is dedicated to the well, have the interests of all owners actually consolidated by communitization, unitization, force-pooling, etc?

() Yes () No If answer is "yes," type of consolidation

If answer is "no," list the owners and tract descriptions which have actually consolidated. (Use reverse side of this form if necessary.)

No allowable will be assigned to the well until all interests have been consolidated (by communitization, unitization, forced-pooling, or otherwise) or until a non standard unit, eliminating such interests, has been approved by the Commission.



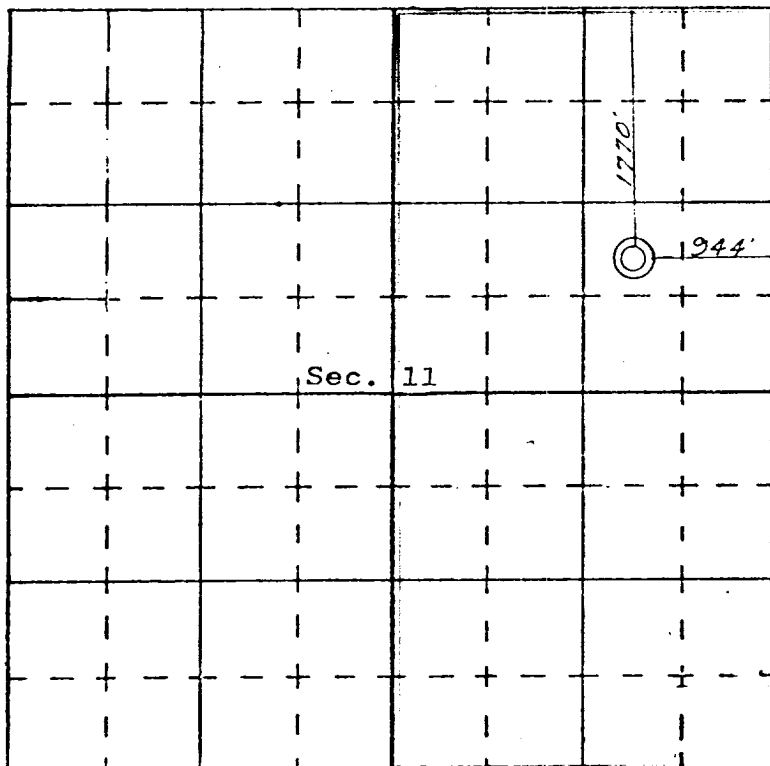
CERTIFICATION

I hereby certify that the information contained herein is true and complete to the best of my knowledge and belief.

J. A. Ubben
 Name **J. A. Ubben**
 Position **Administrative Supervisor**
 Company **CONTINENTAL OIL COMPANY**
 Date **June 6, 1973**

I hereby certify that the well location shown on this plat was plotted from field notes of actual surveys made by me or under my supervision, and that the same is true and correct to the best of my knowledge and belief.

23 May, 1973
 Date Surveyed
James P. Leese
 Registered Professional Engineer
 and/or Land Surveyor
JAMES P. LEESE
1463
 Certificate No.



SCALE—4 INCHES EQUALS 1 MILE

SAN JUAN ENGINEERING COMPANY, FARMINGTON, N. M.