

UNITED STATES  
DEPARTMENT OF THE INTERIOR  
GEOLOGICAL SURVEY

## APPLICATION FOR PERMIT TO DRILL, DEEPEN, OR PLUG BACK

30-039-20681

5. LEASE DESIGNATION AND SERIAL NO.

NM - 18327

6. IF INDIAN, ALLOTTEE OR TRIBE NAME

7. UNIT AGREEMENT NAME

8. FARM OR LEASE NAME

Conoco 29-4

9. WELL NO.

10. FIELD NO. POOL, OR WILDCAT

East San Juan - Mesaverde

11. SEC., T., R., M., OR BLK.  
AND SURVEY OR AREA

Sec. 28, T29N, R4W

12. COUNTY OR PARISH

Rio Arriba

13. STATE

New Mexico

1a. TYPE OF WORK

DRILL ☒DEEPEN ☐PLUG BACK ☐

b. TYPE OF WELL

OIL  
WELL ☐GAS  
WELL ☒

OTHER

SINGLE  
ZONE ☐MULTIPLE  
ZONE ☐

2. NAME OF OPERATOR

Continental Oil Company

3. ADDRESS OF OPERATOR

152 N. Durbin, Casper, Wyoming 82601

4. LOCATION OF WELL (Report location clearly and in accordance with any State requirements.\*)

At surface

1820' FSL, 970' FWL (NW SW)

At proposed prod. zone

14. DISTANCE IN MILES AND DIRECTION FROM NEAREST TOWN OR POST OFFICE\*

15. DISTANCE FROM PROPOSED\*

LOCATION TO NEAREST  
PROPERTY OR LEASE LINE, FT.  
(Also to nearest drlg. unit line, if any)

16. NO. OF ACRES IN LEASE

640

17. NO. OF ACRES ASSIGNED  
TO THIS WELL

320

18. DISTANCE FROM PROPOSED LOCATION\*  
TO NEAREST WELL, DRILLING, COMPLETED,  
OR APPLIED FOR, ON THIS LEASE, FT.

19. PROPOSED DEPTH

6730'

20. ROTARY OR CABLE TOOLS

Rotary

21. ELEVATIONS (Show whether DF, RT, GR, etc.)

7050' GR

7403 G.L.

22. APPROX. DATE WORK WILL START\*

August 15, 1973

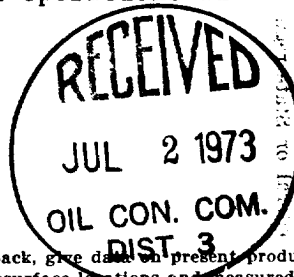
23.

## PROPOSED CASING AND CEMENTING PROGRAM

SIZE OF HOLE	SIZE OF CASING	WEIGHT PER FOOT	SETTING DEPTH	QUANTITY OF CEMENT
12 1/4"	8 5/8"	24#	200'	150 sacks class "A" cement
7 7/8"	4 1/2"	10.5#	6730'	260-130 sacks Poz "A" in two stages

It is proposed to drill the subject well to test for commercial gas production from the Mesaverde formation. No cores or DST tests are planned. All appropriate logs will be run.

The drilling rig will be equipped with a blow-out preventer, which will be tested daily. Also all equipment used in the drilling operations will be equipped with all safety devices prescribed by the U. S. Forest Service, and all operations will be conducted according to their rules and regulations.



IN ABOVE SPACE DESCRIBE PROPOSED PROGRAM: If proposal is to deepen or plug back, give data on present productive zone and proposed new productive zone. If proposal is to drill or deepen directionally, give pertinent data on subsurface locations and measured and true vertical depths. Give blowout preventer program, if any.

24.

SIGNED

TITLE Administrative Supervisor

DATE June 26, 1973

(This space for Federal or State office use)

PERMIT NO.

APPROVAL DATE

APPROVED BY

TITLE

DATE

CONDITIONS OF APPROVAL, IF ANY:

USGS(6) NMOCC - Aztac(2) U. S. Forest Service File(2)

# NEW MEXICO OIL CONSERVATION COMMISSION

## WELL LOCATION AND ACERAGE DEDICATION PLAT

All distances must be from the outer boundaries of the Section

Operator <b>CONTINENTAL OIL COMPANY</b>			Lease <b>NM-18327</b>		Conoco <b>29-4</b>		Well No <b>3</b>
Unit Letter <b>L</b>	Section <b>28</b>	Township <b>29 NORTH</b>	Range <b>4 WEST</b>	County <b>RIO ARriba</b>			
Actual Footage Location of Well: <div style="display: flex; justify-content: space-between;"> <span><b>1820</b> feet from the <b>SOUTH</b> line and</span> <span><b>970</b> feet from the <b>WEST</b> line</span> </div>							
Ground Level Elev. <b>7403.0</b>	Producing Formation		Pool <b>Blanco Mesaverde</b>		Dedicated Acreage <b>320</b> Acres		

1. Outline the acreage dedicated to the subject well by colored pencil or hatchure marks on the plat below.
2. If more than one lease is dedicated to the well, outline each and identify the ownership thereof (both as to working interest and royalty).
3. If more than one lease of different ownership is dedicated to the well, have the interests of all owners been consolidated by communitization, unitization, force-pooling, etc?

( ) Yes ( ) No If answer is "yes," type of consolidation \_\_\_\_\_

If answer is "no," list the owners and tract descriptions which have actually consolidated. (Use reverse side of this form if necessary) \_\_\_\_\_

No allowable will be assigned to the well until all interests have been consolidated (by communitization, unitization, forced-pooling, or otherwise) or until a non standard unit, eliminating such interests, has been approved by the Commission.

### CERTIFICATION

I hereby certify that the information contained herein is true and complete to the best of my knowledge and belief.

**RECEIVED**  
JUL 2 1973

OIL CON. COM.  
DIST. 3

Name J. A. Uhlen  
Position Administrative Supervisor

Company CONTINENTAL OIL COMPANY

Date June 26, 1973

I hereby certify that the well location shown on this plat was plotted from field notes of actual surveys made by me or under my supervision, and that the same is true and correct to the best of my knowledge and belief.

**12 June 1973**

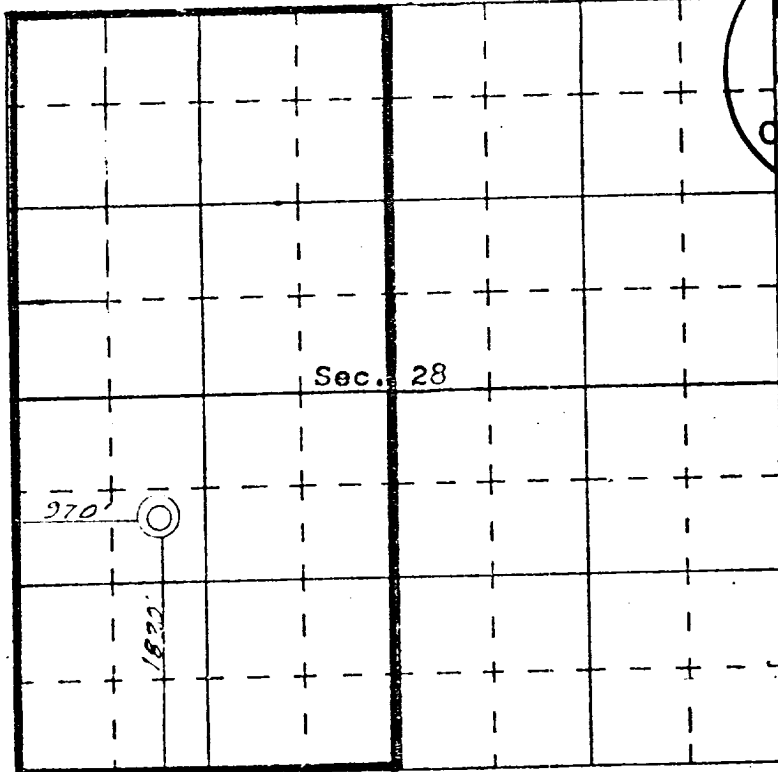
Date Surveyed 12 June 1973

Registered Professional Engineer  
and Land Surveyor  
James P. Leese

**JAMES P. LEESE**

**1463**

Certificate No. JAMES P. LEESE



SCALE—4 INCHES EQUALS 1 MILE

SAN JUAN ENGINEERING COMPANY, FARMINGTON, N. M.