

# NEW MEXICO OIL CONSERVATION COMMISSION

## WELL LOCATION AND ACERAGE DEDICATION PLAT

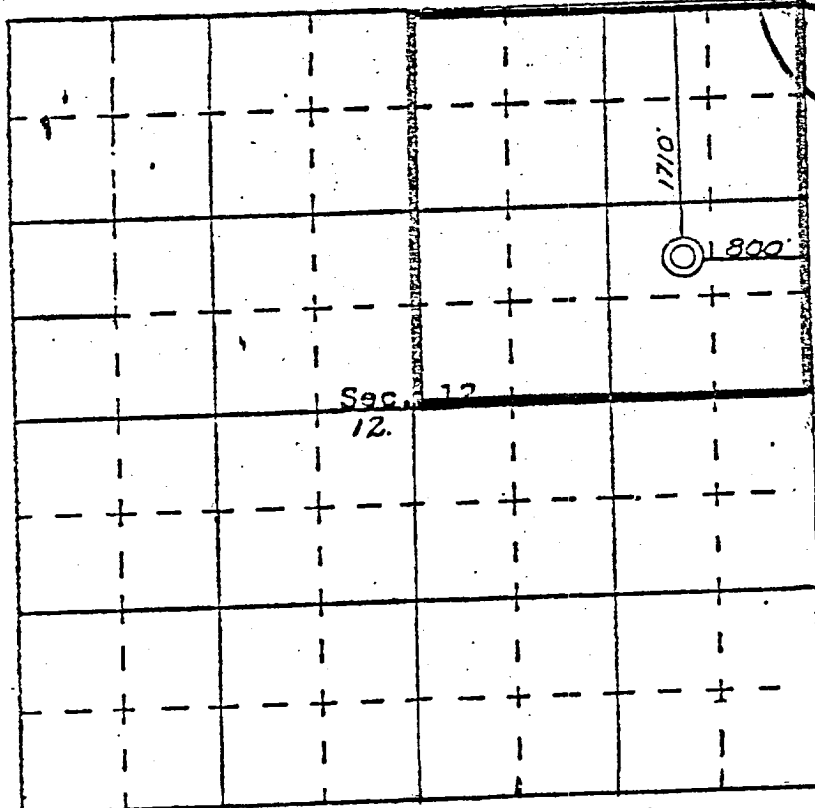
All distances must be from the outer boundaries of the Section

Operator <b>CONTINENTAL OIL COMPANY</b>			Lease <b>CONOCO 29-4</b>		Well No. <b>15</b>
Unit Letter <b>H</b>	Section <b>12</b>	Township <b>29 NORTH</b>	Range <b>4 WEST</b>	County <b>RIO ARriba</b>	
Actual Footage Location of Well:					
<b>1710</b> feet from the <b>NORTH</b> line and <b>800</b> feet from the <b>EAST</b> line					
Ground Level Elev. <b>7112.0</b>	Producing Formation <b>GALLUP</b>	Pool <b>CAMPO-GALLUP</b>	Dedicated Acreage: <b>160</b> Acres		

1. Outline the acreage dedicated to the subject well by colored pencil or hatchure marks on the plat below.
2. If more than one lease is dedicated to the well, outline each and identify the ownership thereof (both as to working interest and royalty).
3. If more than one lease of different ownership is dedicated to the well, have the interests of all owners been consolidated by communitization, unitization, force-pooling, etc?

( ) Yes ( ) No If answer is "yes," type of consolidation \_\_\_\_\_  
 If answer is "no," list the owners and tract descriptions which have actually consolidated. (Use reverse side of this Form if necessary.) \_\_\_\_\_

No allowable will be assigned to the well until all interests have been consolidated (by communitization, unitization, forced-pooling, or otherwise) or until a non standard unit, eliminating such interests, has been approved by the Commission.



### CERTIFICATION

I hereby certify that the information contained herein is true and complete to the best of my knowledge and belief.

Name J. A. Uhlen  
 Position Administrative Supervisor  
 Company Continental Oil Company  
 Date October 2, 1973

I hereby certify that the well location shown on this plat was plotted from field notes of actual surveys made by me or under my supervision, and that the same is true and correct to the best of my knowledge and belief.

Date September 1973  
 Signature James P. Leese  
 Title Professional Engineer and Land Surveyor  
 Name JAMES P. LEESE  
 Certificate No. 1461

SCALE 1 INCHES EQUALS 1 MILE

CARMINOTON, N. M.