

UNITED STATES
DEPARTMENT OF THE INTERIOR
GEOLOGICAL SURVEY

30-039-21039

APPLICATION FOR PERMIT TO DRILL, DEEPEN, OR PLUG BACK

1a. TYPE OF WORK

DRILL ☒DEEPEN ☐PLUG BACK ☐

5. LEASE DESIGNATION AND SERIAL NO.

NM 03040-A

6. IF INDIAN, ALLOTTEE OR TRIBE NAME

7. UNIT AGREEMENT NAME

San Juan 29-6 Unit

8. FARM OR LEASE NAME

San Juan 29-6 Unit

9. WELL NO.

106

10. FIELD AND POOL, OR WILDCAT

Basin Dakota

11. SEC., T., R., M., OR BLK.
AND SURVEY OR AREA

Sec 31, T29N, R6W, NMPM

12. COUNTY OR PARISH

Rio Arriba

13. STATE

New Mexico

b. TYPE OF WELL

OIL
WELL ☐GAS
WELL ☒

OTHER

SINGLE
ZONE ☒MULTIPLE
ZONE ☐

2. NAME OF OPERATOR

Northwest Pipeline Corporation

3. ADDRESS OF OPERATOR

P.O. Box 90 Farmington, N.M. 87401

4. LOCATION OF WELL (Report location clearly and in accordance with any State requirements.)*

At surface

800' FSL 7 990' FWL

At proposed prod. zone

14. DISTANCE IN MILES AND DIRECTION FROM NEAREST TOWN OR POST OFFICE*

12 miles east of Blanco, New Mexico

15. DISTANCE FROM PROPOSED*

LOCATION TO NEAREST

PROPERTY OR LEASE LINE, FT.

(Also to nearest drig. unit line, if any)

16. NO. OF ACRES IN LEASE

17. NO. OF ACRES ASSIGNED
TO THIS WELL

320

18. DISTANCE FROM PROPOSED LOCATION*

TO NEAREST WELL, DRILLING, COMPLETED,
OR APPLIED FOR, ON THIS LEASE, FT.

19. PROPOSED DEPTH

8100'

20. ROTARY OR CABLE TOOLS

rotary

21. ELEVATIONS (Show whether DF, RT, GR, etc.)

6822' GR

22. APPROX. DATE WORK WILL START*

November 1, 1974

23.

PROPOSED CASING AND CEMENTING PROGRAM

SIZE OF HOLE	SIZE OF CASING	WEIGHT PER FOOT	SETTING DEPTH	QUANTITY OF CEMENT
13-3/4	9-5/8	32.3	200	190 sx (225 cu.ft)
8-3/4	7	20.0	3900	165 sx (360 cu ft)
6-1/4	4-1/2	10.5 & 11.6	8100	325 sx (585 cu ft)

Selectively perforate and stimulate the Dakota formation.

The South half of section 31 is dedicated to this well.

IN ABOVE SPACE DESCRIBE PROPOSED PROGRAM: If proposal is to deepen or plug back, give data on present productive zone and proposed new productive zone. If proposal is to drill or deepen directionally, give pertinent data on subsurface locations and measured and true vertical depths. Give blowout preventer program, if any.

24.

SIGNED

O.B. Whitenburg

is

TITLE Production & Drilling Engineer

DATE October 24, 1974

(This space for Federal or State office use)

PERMIT NO.

APPROVAL DATE

APPROVED BY

TITLE

DATE

CONDITIONS OF APPROVAL, IF ANY:

*See Instructions On Reverse Side

**NEW MEXICO OIL CONSERVATION COMMISSION
WELL LOCATION AND ACREAGE DEDICATION PLAT**

Form C-102
Supersedes C-128
Effective 1-1-65

All distances must be from the outer boundaries of the Section.

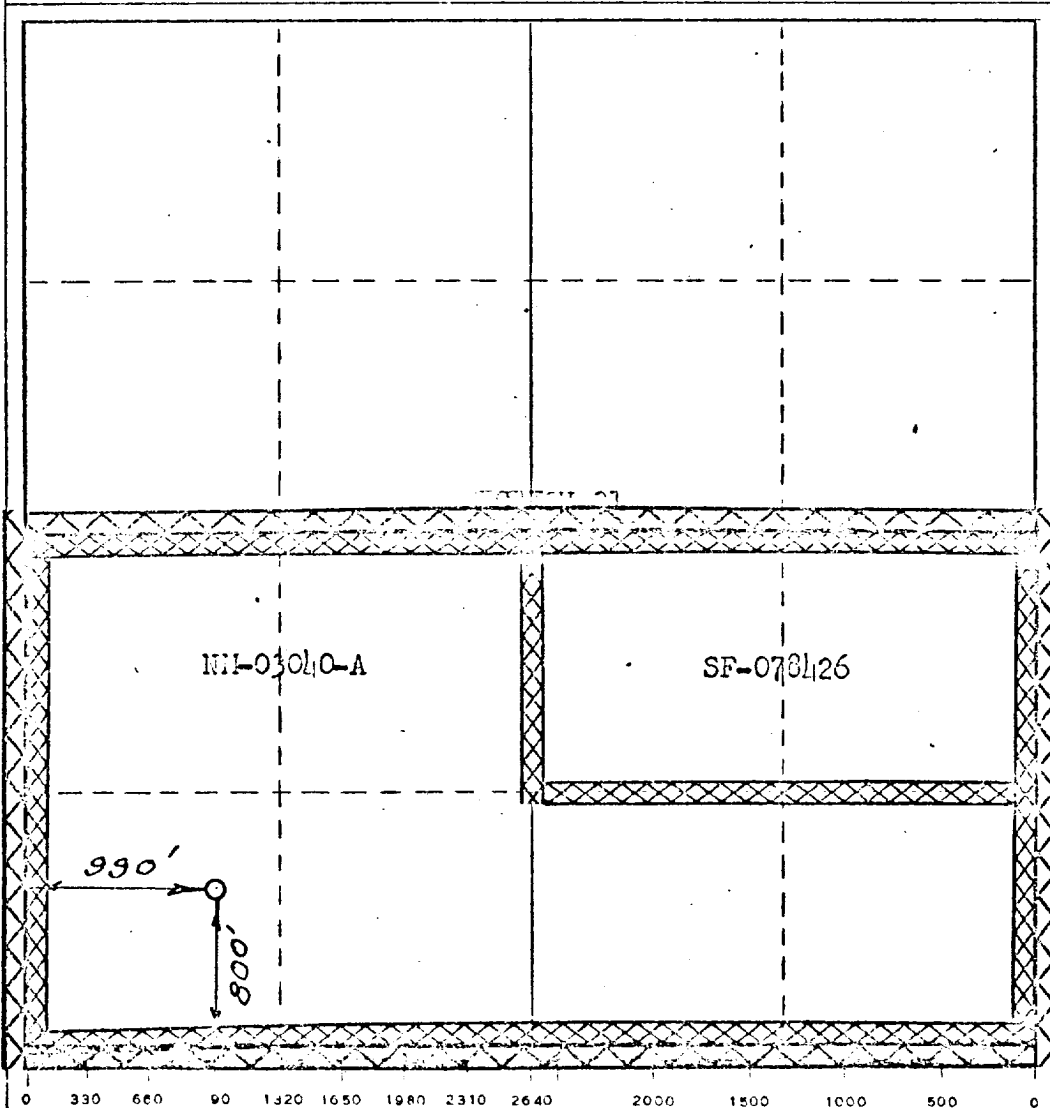
Operator <u>Northwest Pipeline Corp.</u> <u>EL PASO NATURAL GAS COMPANY</u>		Lease <u>SAN JUAN 29-6 UNIT (NH-03040-A)</u>		Well No. <u>106</u>
Unit Letter <u>M</u>	Section <u>31</u>	Township <u>29-N</u>	Range <u>6-W</u>	County <u>RIO ARriba</u>
Actual Footage Location of Well: <u>800</u> feet from the <u>SOUTH</u> line and <u>990</u> feet from the <u>WEST</u> line				
Ground Level Elev. <u>6822</u>	Producing Formation <u>DAKOTA</u>	Pool <u>BASIN DAKOTA</u>	Dedication Acreage: <u>320.00</u> Acres	

1. Outline the acreage dedicated to the subject well by colored pencil or hachure marks on the plat below.
2. If more than one lease is dedicated to the well, outline each and identify the ownership thereof (both as to working interest and royalty).
3. If more than one lease of different ownership is dedicated to the well, have the interests of all owners been consolidated by communitization, unitization, force-pooling, etc?

☐ Yes ☒ No If answer is "yes," type of consolidation _____

If answer is "no," list the owners and tract descriptions which have actually been consolidated. (Use reverse side of this form if necessary.) SW 1/4 SW/4 Section 31, T29N, R6W

No allowable will be assigned to the well until all interests have been consolidated (by communitization, unitization, forced-pooling, or otherwise) or until a non-standard unit, eliminating such interests, has been approved by the Commission.



CERTIFICATION

I hereby certify that the information contained herein is true and complete to the best of my knowledge and belief.

Name O.B. Whitenburg
 Position Production & Drilling Engineer
 Company Northwest Pipeline Corp.
 Date October 25, 1974

I hereby certify that the well location shown on this plat was plotted from field notes of actual surveys made by me or under my supervision, and that the same is true and correct to the best of my knowledge and belief.

Date Surveyed NOVEMBER 29, 1971
 Registered Professional Engineer and/or Land Surveyor
[Signature]
 Certificate No. 1760

Northwest Pipeline Corporation



PRODUCTION & DRILLING
P. O. BOX 90
FARMINGTON, NEW MEXICO 87401

October 24, 1974

United States Geological Survey
P.O. Box 1809
Durango, Colorado 81301

Re: Application for Permit to Drill
San Juan 29-6 Unit #106
SW/4 Sec 31, T29N, R6W

Gentlemen:

Information regarding existing roads, pipelines, flowlines, etc., relative to the above well location are included on the enclosed attachments.

Water for drilling and completion operations will be obtained from the San Juan 29-6 Water well #1 located in the NW 1/4 SW 1/4 Section 28, T29N, R6W.

Waste disposal will be burned in the burn pit, latrine or reserve pit. There will be no camp or airstrip associated with drilling this well.

Upon completion or abandonment of this well the location will be cleaned, leveled, and a dry hole marker placed if applicable.

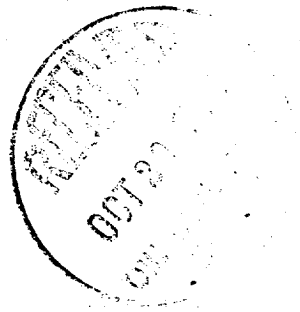
Northwest Pipeline Corporation

O.B. Whitenburg
O.B. Whitenburg

Drilling and Production Engineer

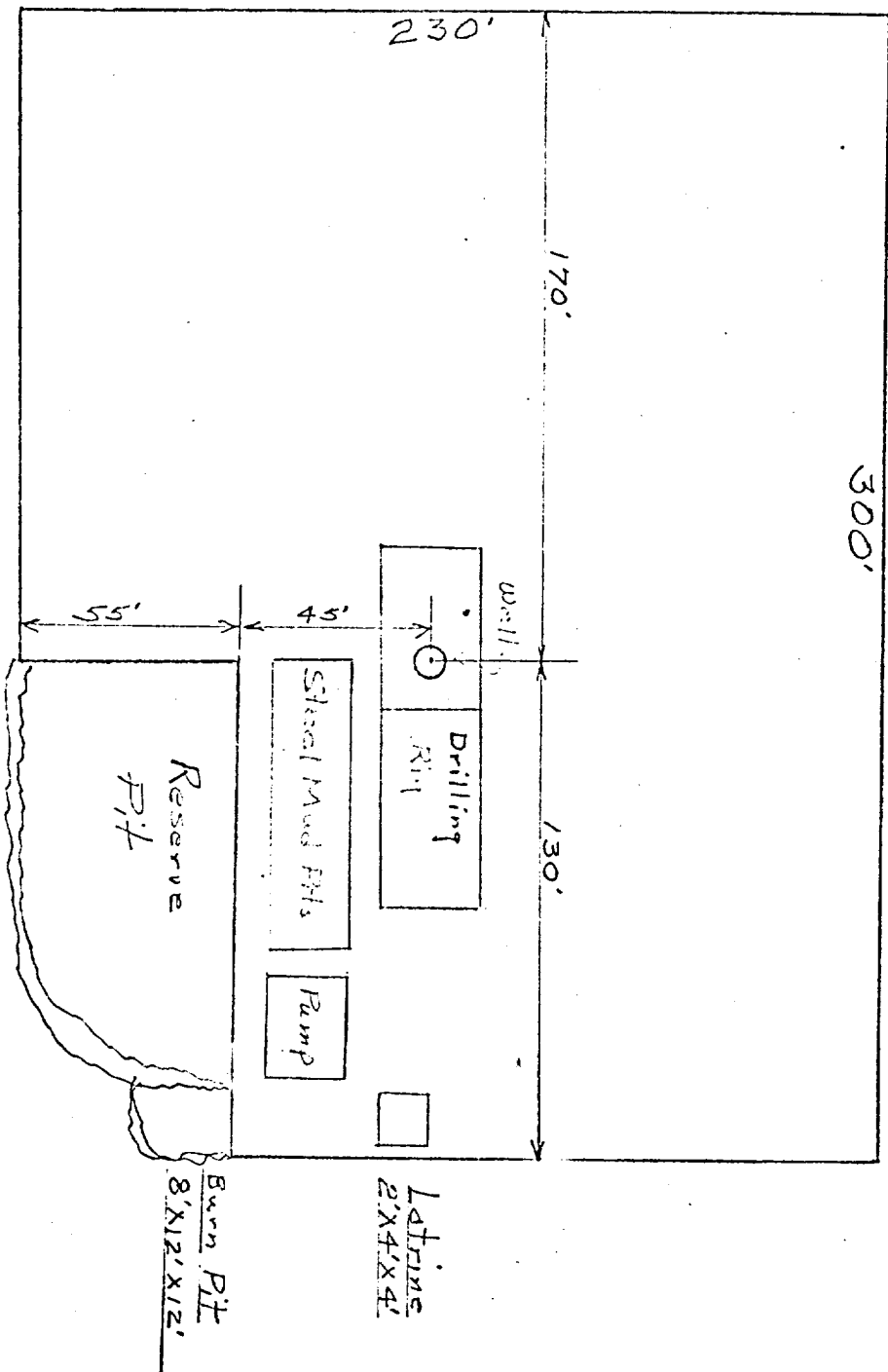
OBW/js

CC/ Well file



LOCATION AND EQUIPMENT LAYOUT

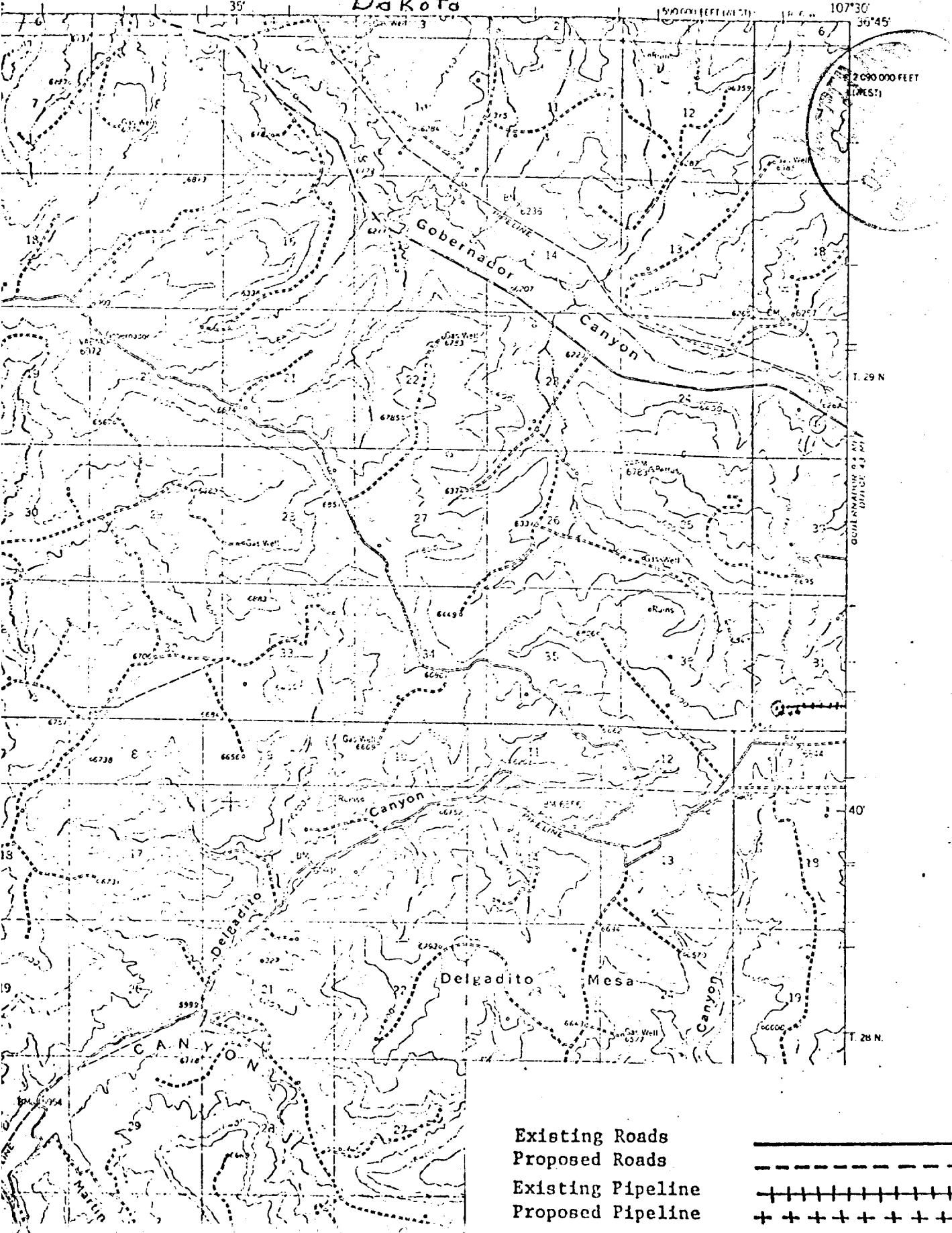
San Juan 29-6 Unit 106



San Juan 29-6 Unit #106
Dakota

GOULD PASS QUADRANGLE
NEW MEXICO
15 MINUTE SERIES (TOPOGRAPHIC)

GOMEZ RANCH
1:24,000



Existing Roads
Proposed Roads
Existing Pipeline
Proposed Pipeline

