

UNITED STATES
DEPARTMENT OF THE INTERIOR
GEOLOGICAL SURVEY

30-039-21085

5. LEASE DESIGNATION AND SERIAL NO.

NM 03471 - A

6. IF INDIAN, ALLOTTEE OR TRIBE NAME

7. UNIT AGREEMENT NAME

San Juan 29-6 Unit

8. FARM OR LEASE NAME

San Juan 29-6 Unit

9. WELL NO.

56 A

10. FIELD AND POOL, OR WILDCAT

Blanco Mesa Verde

11. SEC., T., R., M., OR BLK.

AND SURVEY OR AREA
Sec 33, T29N, R6W NMPM

12. COUNTY OR PARISH

13. STATE

Rio Arriba

New Mexico

1a. TYPE OF WORK

DRILL ☒DEEPEN ☐PLUG BACK ☐

b. TYPE OF WELL

OIL
WELL ☐GAS
WELL ☒

OTHER

SINGLE
ZONE ☒MULTIPLE
ZONE ☐

2. NAME OF OPERATOR

Northwest Pipeline Corporation

3. ADDRESS OF OPERATOR

P.O. Box 90 Farmington, New Mexico 87401

4. LOCATION OF WELL (Report location clearly and in accordance with any State requirements.)*

At surface

930' FWL & 1550' FWL

At proposed prod. zone

14. DISTANCE IN MILES AND DIRECTION FROM NEAREST TOWN OR POST OFFICE*

20 miles East of Blanco, New Mexico

15. DISTANCE FROM PROPOSED*

LOCATION TO NEAREST
PROPERTY OR LEASE LINE, FT.
(Also to nearest drlg. unit line, if any)

16. NO. OF ACRES IN LEASE

17. NO. OF ACRES ASSIGNED
TO THIS WELL

320

18. DISTANCE FROM PROPOSED LOCATION*
TO NEAREST WELL, DRILLING, COMPLETED,
OR APPLIED FOR, ON THIS LEASE, FT.

19. PROPOSED DEPTH

5660'

20. ROTARY OR CABLE TOOLS

rotary

21. ELEVATIONS (Show whether DF, RT, GR, etc.)

6356' GR

22. APPROX. DATE WORK WILL START*

September 1, 1975

23.

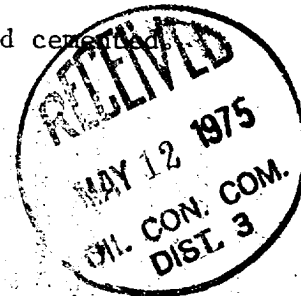
PROPOSED CASING AND CEMENTING PROGRAM

SIZE OF HOLE	SIZE OF CASING	WEIGHT PER FOOT	SETTING DEPTH	QUANTITY OF CEMENT
13-3/4"	9-5/8"	32.3#	200'	180 sx circ
8-3/4"	7"	20#	3570'	165 sx
6-1/4"	4-1/2" liner	10.5	5660	215 sx

Selectively perforate and stimulate the Mesa Verde Formation.

A BOP will be installed after the surface casing is set and cemented.
All subsequent work will be conducted through the BOP.

The W/2 of Section 33 is dedicated to this well.



IN ABOVE SPACE DESCRIBE PROPOSED PROGRAM: If proposal is to deepen or plug back, give data on present productive zone and proposed new productive zone. If proposal is to drill or deepen directionally, give pertinent data on subsurface locations and measured and true vertical depths. Give blowout preventer program, if any.

24.

SIGNED

O. B. Whitenburg

TITLE Sr. Drilling Engineer

DATE 5-7-75

(This space for Federal or State office use)

js

PERMIT NO.

APPROVAL DATE

APPROVED BY

Gm

TITLE

DATE

CONDITIONS OF APPROVAL, IF ANY:

**NEW MEXICO OIL CONSERVATION COMMISSION
WELL LOCATION AND ACREAGE DEDICATION PLAT**

Form C-102
Supersedes C-123
Effective 1-1-65

All distances must be from the outer boundaries of the Section.

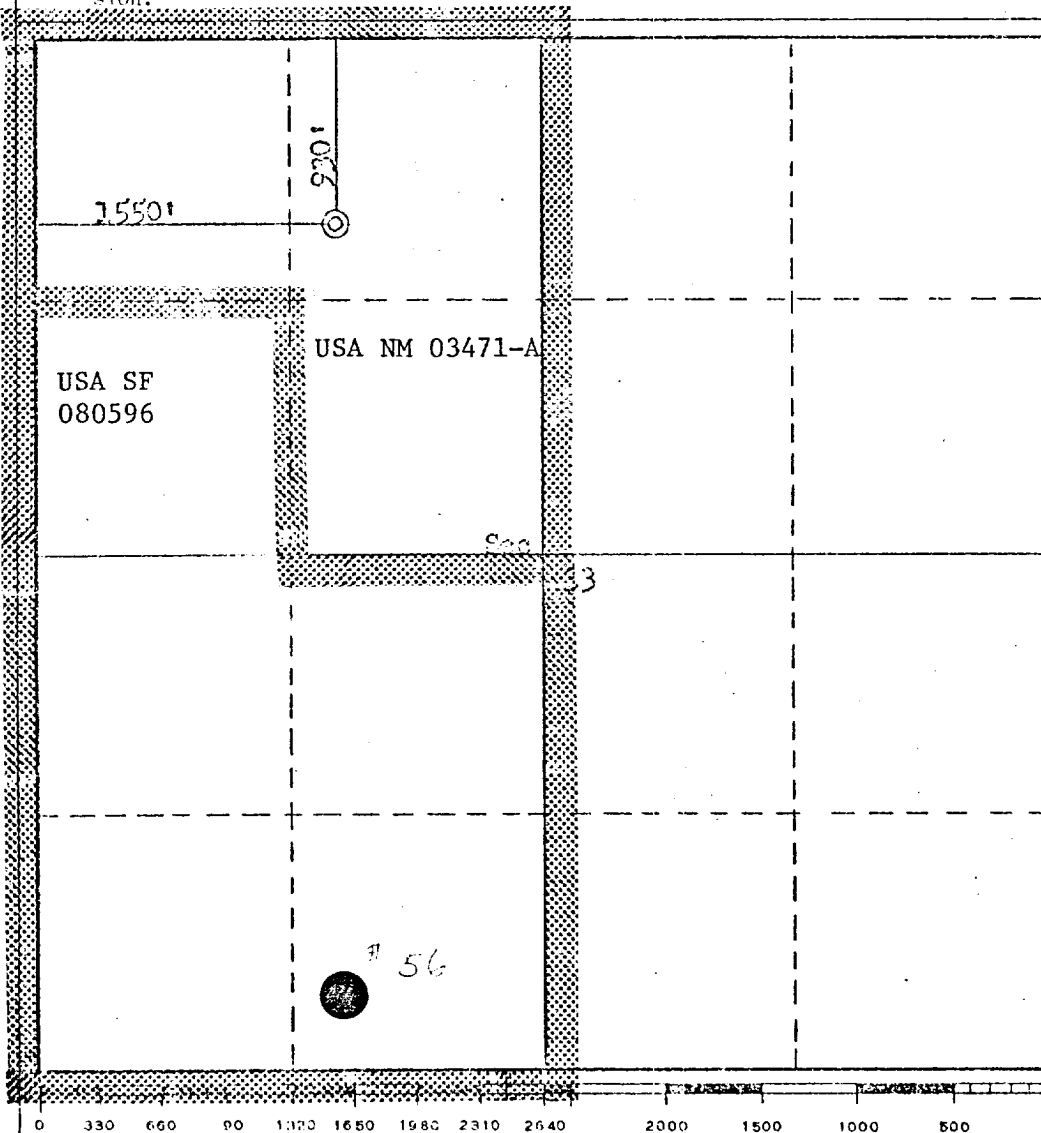
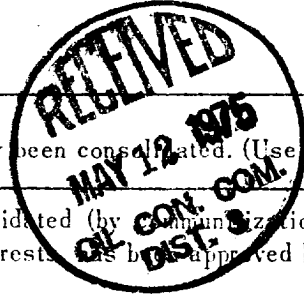
Operator Northwest Pipeline Corporation			Lease San Juan 29-6 Unit		Well No. 56A
Unit Letter C	Section 33	Township 29N	Range 6W	County Rio Arriba	
Actual Footage Location of Well: 930 feet from the North line and 1550 feet from the West line					
Ground Level Elev. 6356	Producing Formation Mesa Verde		Pool Blanco Mesa Verde		Dedicated Acreage 320 Acres

1. Outline the acreage dedicated to the subject well by colored pencil or hachure marks on the plat below.
2. If more than one lease is dedicated to the well, outline each and identify the ownership thereof (both as to working interest and royalty).
3. If more than one lease of different ownership is dedicated to the well, have the interests of all owners been consolidated by communitization, unitization, force-pooling, etc?

☐ Yes ☒ No If answer is "yes," type of consolidation _____

If answer is "no," list the owners and tract descriptions which have actually been consolidated. (Use reverse side of this form if necessary.) NE/4, NW/4 Sec 33, T29N, R6W

No allowable will be assigned to the well until all interests have been consolidated (by communitization, unitization, forced-pooling, or otherwise) or until a non-standard unit, eliminating such interest, is approved by the Commission.



CERTIFICATION

I hereby certify that the information contained herein is true and complete to the best of my knowledge and belief.

O.B. Whitenburg
Name
O.B. Whitenburg is
Position
Sr. Drilling Engineer
Company
Northwest Pipeline Corp.
Date
May 7, 1975

I hereby certify that the well location shown on this plat was plotted from field notes of actual surveys made by me or under my supervision, and that the same is true and correct to the best of my knowledge and belief.

Date Surveyed
April 18, 1975
Registered Professional Engineer and/or Land Surveyor
Fred B. Kerr Jr.
Fred B. Kerr Jr.
Certificate No.
3950

Northwest Pipeline Corporation



PRODUCTION & DRILLING
P. O. BOX 90
FARMINGTON, NEW MEXICO 87401

May 7, 1975

United States Geological Survey
P.O. Box 1809
Durango, Colorado 81301

Re: Application for "Permit to Drill"
San Juan 29-6 Unit #56A
NW/4 Sec 33, T29N, R6W
Rio Arriba County, New Mexico

Gentlemen:

Information regarding existing roads, pipelines, flowlines, etc., relative to the above well location are included on the enclosed attachments.

Water for drilling and completion operations will be obtained from the San Juan 29-6 Water Well #1 located in the NW/4 SW/4 Sec 28, T29N, R6W.

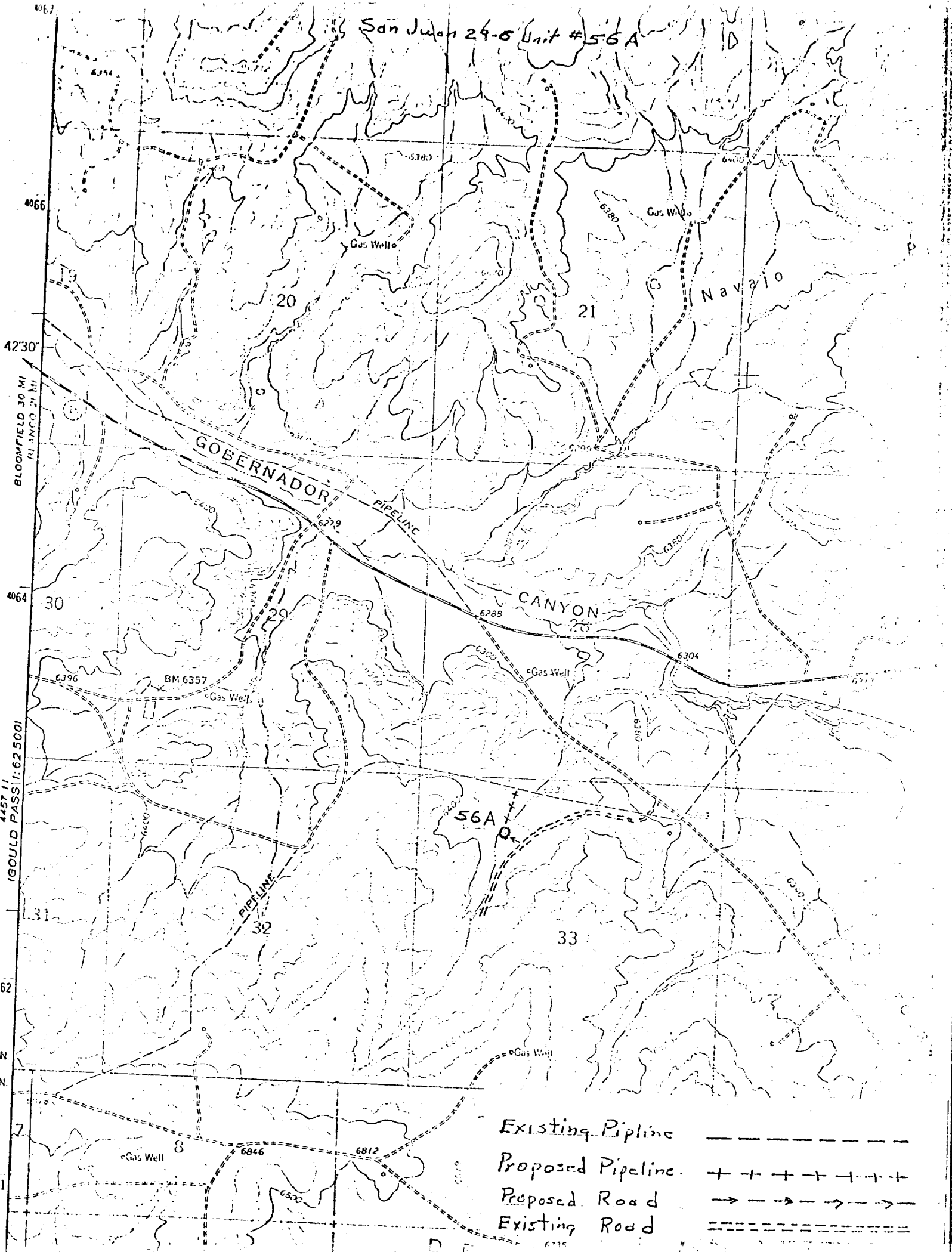
Waste disposal will be in the burn pit, latrine or reserve pit. There will be no camp or airstrip associated with drilling this well. Upon completion or abandonment of this well the location will be cleaned, leveled and a dry hole marker placed if applicable.

Sincerely,

O.B. Whitenburg
Northwest Pipeline Corporation
Senior Production & Drilling Engineer

OBW/js

San Juan 24-5 Unit #56A



Existing Pipeline - - - - -
Proposed Pipeline + + + + +
Proposed Road - - - - -
Existing Road - - - - -

LOCATION AND EQUIPMENT LAYOUT

San Juan 29-6 Unit #56A

